

Service Bulletin.

Only for Volvo Dealers Service Bulletin file.

TIMING GEARS

B16A, B16B

Engines

Oil grooves in camshaft gear guide flange

An increase in wear of the camshaft gear has been noticed lately. On examination it has been found that this can possibly be due to inadequate oil supply and we have therefore reintroduced oil grooves in the camshaft axial guide flange. Flanges with grooves have part number 403182 and without grooves, 403998.

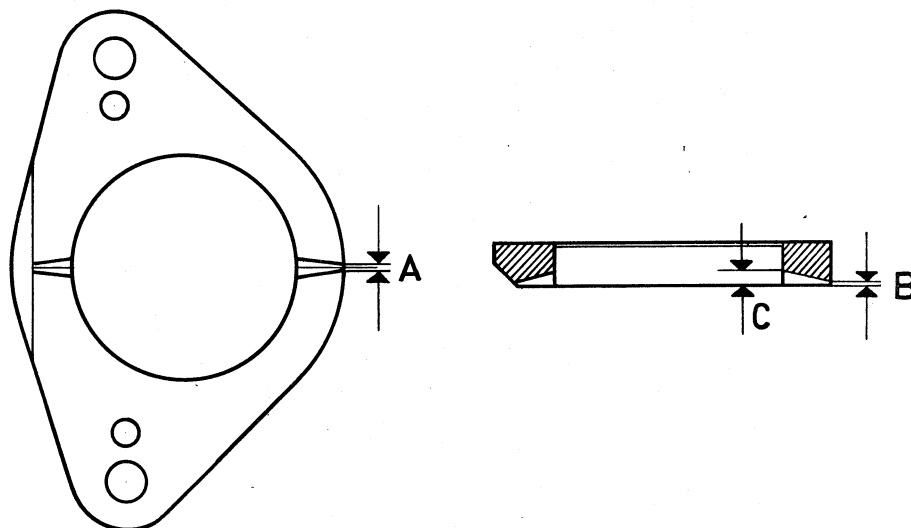
When replacing camshaft gears on engines not having oil grooves in the steering flange, the latter should be replaced by flanges with grooves but it is also possible to file out grooves in the old flange. Use a three-square file (60° angle).

When this has been done, oil pressure at idling speed will fall by about 1.4 p.s.i. (0.1 kg/cm^2) but this is of no practical significance. Note that the grooves must not be made deeper or wider than shown in the sketch as otherwise the oil flow through the grooves will be excessive.

Engines having guide flanges without oil grooves:

B16A (495382) Nos. 34800-35737, 36413-37069, 53674-79992.
(495383) Nos. 32781-33005, 56715-78781.

B16B (495385) Nos. 14766-31074 (495387) Nos. 17822-30411.



A = Width at outer edge, max. 0.04" (1 mm)

B = Depth at outer edge, 0.012 ± 0.004 " (0.3 ± 0.1 mm)

C = Depth at inner edge, 0.12" (3.0 mm)