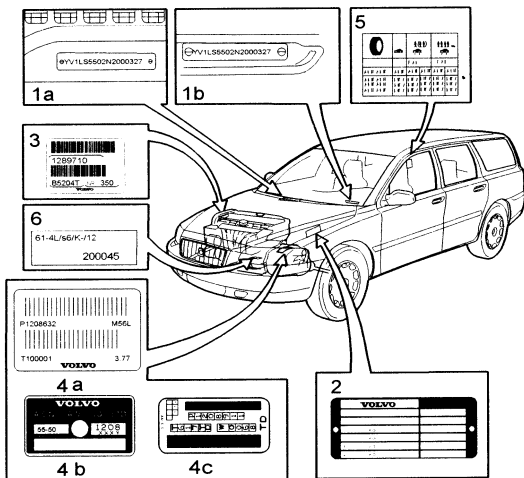


V70

Section 0 General

Plates

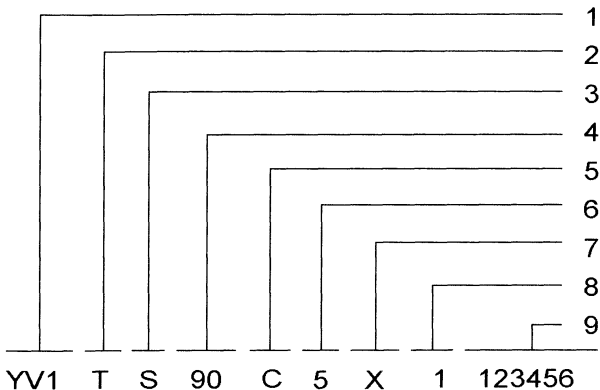


- VIN marking:** Type and model year designation and chassis number. Stamped in the engine compartment on the upper side of the firewall. VIN- plate, located on the upper side of the dashboard.
- Product plate:** Located in the engine compartment on the left wheel arch in front of the spring strut turret.
- Engine type designation, serial and part number:** Decal on the timing cover. Also stamped into the cylinder block, above the water pump housing, between the timing cover and the manifold.

Diesel engines: Stamped into the cylinder block, just in front of the diesel pump.

- Transmission type designation, part and serial number:**
 - Manual transmission: Decal on the front.
 - Automatic transmission AW: Plate on the top.
- Air pressure:** Decal on the inside of the fuel tank filler cover.
- Chassis number plate:** Below the left headlamp.

Type and model year designation and chassis number



1 Manufacturer's code

Control number (USA/CAN)

2 Vehicle type

7 Model year code

3 Variant

8 Factory code

4 Engine type

9 Chassis number

5 Emissions

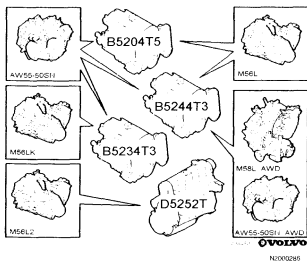
6 Transmission type

Position	Subject	Code	Notes
1 (3 characters)	Manufacturer's code	YV1	Volvo Car Corporation
2 (1 character)	Vehicle type	s	P26
3 (1 character)	Variant	W	5 door estate
4 (2 characters)	Engine type	49	B 5204 T5
		53	B 5234 T3
		58	B 5244 T3
		72	D 5252 T

Type and model year designation and chassis number

5 (1 character)	Emission code	0	H1. Engine number 72
		K	L4. Engine numbers 49, 53, 58
		D	L6. Engine number 53/USA
6 (1 character)	Transmission	2	M56
		3	M58L
		9	AW55-50
		7	AW55-50 AWD
7 (1 character)	Model year code	Y	2000
		1	2001
		2	2002
8 (1 character)	Factory code	1	21 Volvo Torsslanda (VTM)
		2	22 Volvo Europe Car (VCE)
9 (6 characters)	Chassis number		6 figure serial number

Combination Engine - Transmission



Engines:	Engine code:	Transmission:	Final drive:
B 5204 T5	49	M56L AW55-50	4.25:1
B 5234 T3	53	M56L2K AW55-50	4.00:1 2.76:1
B 5244 T3	58	M56L M58L2K AW55-50 AW55-50 AWD	4.00:1 4.25:1
D 5252 T	72	M56L2	3.77:1

Product plate

VOLVO		MADE IN SWEDEN
A		DD
B		EEEE
C ₁	kg	FFF - FF
C ₂	kg	GGGGG
C ₃	kg	HHHHHHHH
C ₄	kg	J

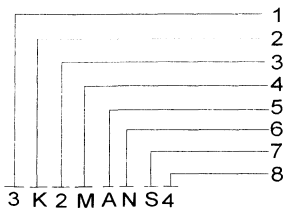
- A. Type approval number.
Whole Vehicle Type Approval Number (WVTA)
Chassis number clarification (USA/CAN).
Construction date (Australia).
B. Identification number
Type designation.
C₁. Maximum gross weight
C₂. Maximum total weight (car + trailer)
C₃. Maximum front axle weight

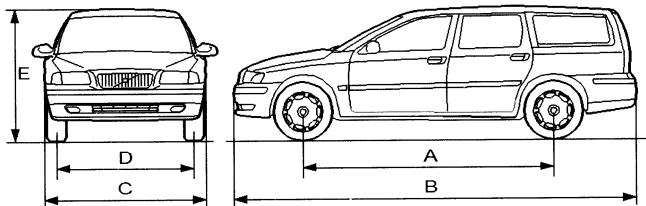
- C₄. Maximum rear axle weight
D. Market code (See Tables)
E. Interior code
F. Paint finish, code / supplier / paint type
(see Tables)
G. Service bulletin (Options)
H. Chassis code See next page
J. Additional information for the WVTA

Chassis code

Chassis codes are interpreted as follows:

- 1 Spring, front
Shock absorber, front
- 2 Spring, front
Shock absorber, front
- 3 Anti-roll bar, front
- 4 Shock absorber, rear
- 5 Spring, rear
- 6 Anti-roll bar, rear
- 7 Combination auxiliary spring, front
- 8 Combination auxiliary spring, front





Dimensions and weight:

Dimensions:		mm	Inches
A	Wheelbase	2755	108.5
B	Length	4710	185.4
C	Width	1804	71.02
D	Track, 15 inch rims:		
	Front	1563	61.5
	Rear	1560	61.4
	Track, 16 inch rims:		
	Front	1551	61.1
	Rear	1548	60.9
	Track, 17 inch rims:		
	Front	1551	61.1
	Rear	1548	60.9
E	Height, AWD	1508-1489	59.4-58.6

For weight information, see also the product plate on the front right wheel arch:	kg	lbs
Maximum gross weight	2150	4740
Maximum gross weight, AWD	2200	4850
Maximum roof load	100	220
Maximum trailer weight:		
Unbraked	500	1102
Braked: Not USA	1800	3968
Braked: USA	1500	3307

Fuel tank	litres	US gallons
Capacity information:		
Useable volume, petrol engines	70	18.5
Useable volume, petrol engines, turbocharged	80	21.1
Useable volume, AWD	72	19.0
Useable volume, diesel engines	70	18.5
Non-useable volume (residual volume)	2	0.5