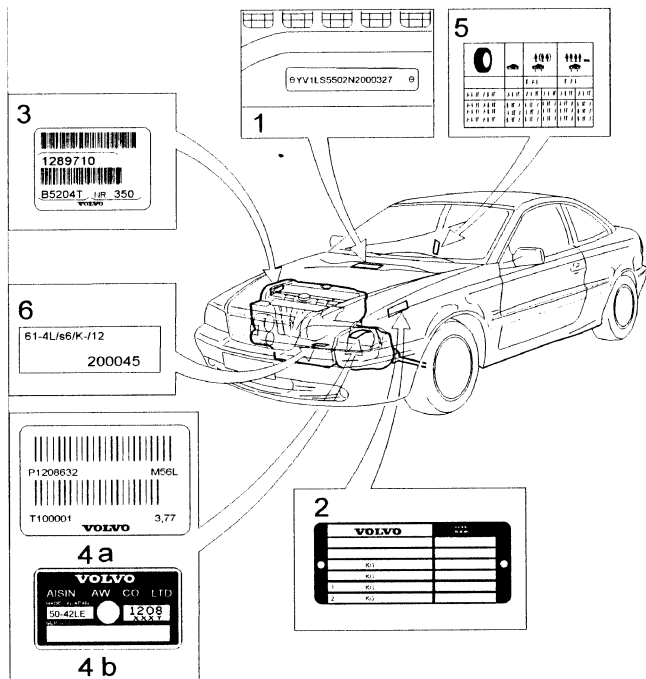


C70

Section 0 General

Plates



C70

Type and model year designation and chassis number

1 VIN marking: Type chassis number and model year details are stamped on the upper side of the firewall in the engine compartment.

USA, Canada, UK and Saudi Arabia: A stamped VIN plate is located to the left of the upper side of the dashboard

2 Product plate: Located in the engine compartment on the left wheel arch next to the battery

3 Engine type designation, serial and part numbers: Decal on the timing cover. Also stamped on the cylinder block, above the water pump housing,

between the timing cover and the manifold

4 Gearbox type designation, part and serial number:

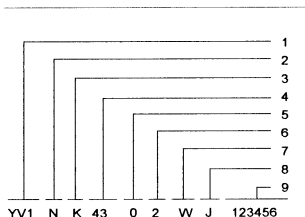
4a) Manual gearbox: Decal on the front of the gearbox.

4b) Automatic gearbox: Plate on upper side of gearbox

5 Air pressure: Decal on the rear edge of the right-hand door

6 Chassis no. plate: Below the left headlamp.

Type and model year designation and chassis number



AE300180

1 Manufacturer's code

2 Vehicle type

3 Variant

4 Engine type

5 Emissions

6 Gearbox type

Control number (USA/CAN)

7 Model year code

8 Factory code

9 Chassis number.

Type and model year designation and chassis number

Position	Subject	Code	Notes
1 (3 character)	Manufacturer's code	YV1	Volvo Car Corporation
2 (1 character)	Vehicle type	N	C70
3 (1 character)	Variant	K C	2-door coupe 2-door convertible
4 (2 character)	Engine type	43 48 53 55 56 56	B 5204 T3 B 5204 T4 B 5234 T3 B 5254 S B 5254 T B 5244 T
5 (1 character)	Emissions (see: Tables)	0 7	C1, C2 G8
6 (1 character)	Gearbox type	2 6 9	M56L, M56H AW50-42 AW50-50
7 (1 character)	Model year code	0 W X Y 1	for France always zero (0) 1998 1999 2000 2001
8 (1 character)	Factory code	J	Uddevalla (AUTONOVA)
9 (6 character)	Chassis number		6 digit serial number

Engine:	Gearbox:	Final drive:
B 5204 T3	AW50-42 M56L	2.56:1 4.25:1
B 5204 T4	AW50-42 AW55-50 M56L	2.76:1 2.65:1 4.25:1
B 5234 T3	AW50-42 AW55-50 M56H	2.56:1 2.44:1 4.00:1
B 5254 T	AW50-42 M56H	2.56:1 4.00:1

C70*Type and model year designation and chassis number*

Engine:	Gearbox:	Final drive:
B 5254 S	AW50-42	2.76:1
B 5244 S	AW55-50	2.48:1
B5244 T	M56H	4.00:1
	AW55-50	2.44:1
	M56H	4.00:1

Product plate

VOLVO		MADE IN SWEDEN
A		DD
B		EEEE
C₁	kg	FFF-FF
C₂	kg	GGGGG
C₃	kg	HHHHHHH
C₄	kg	J

A. Type approval number or Whole Vehicle Type Approval Number (WVTA). Chassis no. simplification (USA/CAN). Construction date (Australia)

B. Identification number/Type designation

C₁. Maximum total weight

C₂. Maximum train weight Car + trailer

C₃. Maximum front axle pressure

C₄. Maximum rear axle pressure

D. Market code See Tables

E. Interior code

F. Paint finish, code / supplier / paint type. See Tables

G. Service bulletin Options

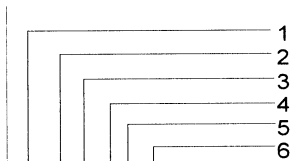
H. Chassis code

J. Additional Information for the WVTA.

Chassis code

Chassis codes are interpreted as follows:

- 1 Spring, front: 35 46 640
Shock absorber, front: 91 40 070
- 2 Anti-roll bar, front: 35 46 859
- 3 Shock absorber, rear: 68 00 327
- 4 Spring, rear: 35 46 893
- 5 Anti-roll bar, rear: 36 46 386
- 6 Combined auxiliary spring front / rear: 75 91 40 066 / 35 46 038



C70

Chassis code

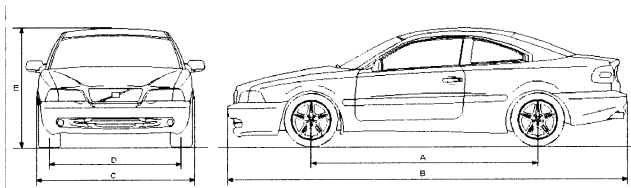
Chassis code Pos 1	Combined auxiliary spring, front / shock absorber, front	
	Spring, front	Shock absorber, front
See the corresponding section for S70, V70. Table: Section 0: Chassis code.		See the corresponding section for S70, V70. Table: Section 0: Chassis code.

Chassis code Pos 2	Anti-roll bar, front	Chassis code Pos 3	Shock absorber, rear
See the corresponding section for S70, V70. Table: Section 0: Chassis code.		See the corresponding section for S70, V70. Table: Section 0: Chassis code.	

Chassis code Pos 4	Spring, rear	Chassis code Pos 5	Anti-roll bar, rear
See the corresponding section for S70, V70. Table: Section 0: Chassis code.		See the corresponding section for S70, V70. Table: Section 0: Chassis code.	

Chassis code Pos 6	Combined auxiliary spring front / rear	
	Auxiliary spring, front	Auxiliary spring, rear
S	91 40 066	35 46 038
L	91 40 128	35 46 705
H	91 40 066	35 46 705

Chassis code Pos 7	Steering gear
4	TRW
5	SMI



Measurement as illustrated above:

A	Wheelbase	mm	2664
B	Length	mm	4716
C	Width	mm	1817
D	Track width:		
	Front	mm	1521
	Rear	mm	1518
E	Height, approx (dependent on the tyre type):		
	Coupe	mm	1414
	Convertible	mm	1429

Weight

Approx. weight for empty car with full fuel tank	kg	1450-1570
Maximum roof load	kg	100 (Coupe)
Maximum trailer weight:		
Unbraked	kg	500
Braked	kg	1600

Fuel tank volume:

Executable tank volume / remaining capacity	litres	70 / 2
Executable tank volume / remaining capacity	US Gallons	18.5/0.53