

VOLVO
for life

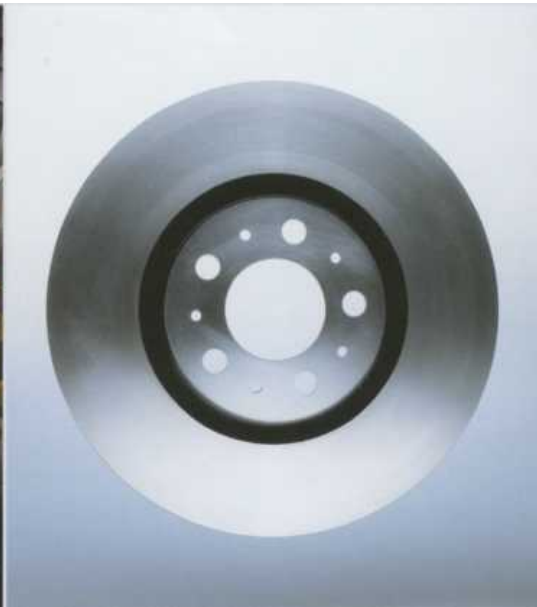


VOLVO
S80



PERFORMANCE

DRIVING A VOLVO S80 IS AN UNUSUALLY HARMONIOUS EXPERIENCE. THE BALANCE, THE STABILITY, THE RESPONSE - THE CAR REACTS OBEDIENTLY TO YOUR EVERY COMMAND WITHOUT TAKING YOU BY SURPRISE. BECAUSE THE VERY PROPERTIES THAT MAKE THE VOLVO S80 SO OUTSTANDING TO DRIVE ARE ALSO VITAL TO SAFETY - SO YOU CAN RELAX AND ENJOY DRIVING.



Multi-link rear suspension maintains practically constant wheel angles and track width. It provides you with both pleasant ride comfort and well-balanced, consistent road manners.

You can fully enjoy the response of an agile chassis and a smooth six-cylinder or five-cylinder engine ranging from 140 bhp to 272 bhp. When needed, a powerful anti-lock braking system featuring EBA* (Emergency Brake Assistance) is at your disposal.

*Included in DSTC (standard on 2.4T, 2.9 and T6)

Power is in your hands. In Automatic mode, the Geartronic transmission adapts its gearchanging pattern to suit your driving style. And if you want to drive more actively, just switch over to Manual mode.

(standard on 2.9 and T6 only)

A highly torsionally stiff body and one of the most advanced chassis in the automotive world contribute to the stable road behaviour. Front-wheel drive and independent wheel suspension have been combined with sophisticated multi-link rear suspension. The result is stable and predictable road-holding and, not least, first class ride comfort.

The STC (Stability and Traction Control)* anti-spin system ensures that the driven wheels get just the right amount of power so that they retain a firm grip on the road. DSTC (Dynamic Stability and Traction Control) detects and counteracts any tendency to skid by braking the wheels necessary to retain control'.

Standard on 2.4, Bi-Fuel and D5 only
t Standard on 2.4T, 2.9 and T6



ENGINE AND TRANSMISSION

VOLVO S80 T6 (272 BHP)

An in-line six-cylinder 2.9-litre petrol engine, remarkably smooth and with overwhelming power. The engine pumps out its full torque potential (380 Nm) from just 1800 rpm and then continues to pull like a turbine across the full rev range. It propels the Volvo S80 T6 from 0 to 62 mph in just 7.2 seconds. Dual turbochargers and variable inlet valve timing promote superb performance. Low internal friction and variable exhaust valve timing help keep the lid on fuel consumption and ensure that the engine meets the strict European 2005 emission requirements.

VOLVO S80 2.9 (196 BHP)

The in-line six-cylinder 196-bhp 2.9-litre petrol engine is characterised by its smooth running and responsive power at all times, giving you a well-balanced combination of performance and fuel economy. This engine has variable valve timing on the inlet side for more even torque at all engine speeds. It is also considerate towards the environment and meets the strict European 2005 emission requirements.

VOLVO S80 2.4T (200 BHP)

The in-line five-cylinder 2.4-litre turbocharged petrol engine yields maximum torque (285 Nm) from 1800 rpm - so you can move off smartly and seldom need to change down for overtaking. You can accelerate from 0 to 62 mph in 7.9 seconds with manual transmission. Low internal friction and variable valve timing on the exhaust side give low fuel consumption and cleaner emissions in all driving conditions.

VOLVO S80 2.4 (140 BHP)

VOLVO S80 2.4 (170 BHP)

The 2.4-litre five-cylinder petrol engine inspires a relaxed driving style. At the same time, you can enjoy swift, safe overtaking. It has low internal friction combined with electronic engine management and variable valve timing on the inlet side. This means both fine performance and low fuel consumption. With highly efficient combustion and emission control, this engine meets the strict European 2005 emission requirements.

VOLVO S80 D5 (163 BHP)

Volvo's direct-injected five-cylinder 2.4-litre aluminium turbodiesel engine harmonises with the dynamic properties of the Volvo S80. The very latest diesel engine technology featuring common rail direct injection and variable turbine geometry results in alert response, exceptionally smooth operation, remarkable pulling power and, not least, superior fuel economy. High torque (340 Nm) from 1750 rpm provides excellent performance whatever the driving conditions. The low weight of the engine contributes to the low fuel consumption and the well-balanced road behaviour.

VOLVO S80 BI-FUEL CNG/PETROL (140 BHP)

VOLVO S80 BI-FUEL LPG/PETROL (140 BHP)

The 2.4-litre five-cylinder Bi-Fuel engine benefits both the environment and your wallet - without compromising driving pleasure. It is available in two variants: one powered by CNG (natural gas or biogas) and one that runs on liquefied petroleum gas (LPG). When driving on gas, hazardous emissions are much lower than when running on conventional fuels. Both engines use petrol as the reserve fuel. The location of the fuel tanks under the luggage compartment floor allows you to utilise the entire luggage area without any loss of cargo capacity.

MANUAL GEARBOX

If you prefer a more involving driving style, you will enjoy the smooth and distinct five-speed all-synchromesh manual gearbox.

AUTOMATIC TRANSMISSION

The responsive adaptive automatic adjusts gearshifting patterns to suit the individual driver. A special Winter mode makes it easier to get moving - and keep moving - on slippery roads. (Five-speed adaptive automatic transmission is only available with the five-cylinder engines.)

GEARTRONIC TRANSMISSION

With Geartronic automatic transmission, you get two gearboxes in one: firstly, an adaptive four-speed automatic transmission for relaxed driving, and secondly, a manual gearbox if you want to drive more actively. In Automatic mode, the transmission registers your driving style and adapts the gearchanging pattern accordingly. A separate Winter mode makes it easier to get under way when conditions are slippery. In Manual mode, you change up by pushing the gear lever forwards and down by pulling the lever towards you. (Standard in the Volvo S80 T6 and 2.9.)

STC ANTI-SPIN SYSTEM

STC (Stability and Traction Control)* enhances driving stability on slippery roads. If one or both of the driven wheels starts to spin, torque is restricted instantaneously so that the wheel can regain its grip. STC also makes sure that you can get moving more easily if you have to start off on a slippery surface. It also increases stability when cornering and reduces understeer when accelerating out of a curve.

* (Standard on 2.4, Bi-Fuel and D5.)

DSTC ANTI-SKID SYSTEM

DSTC (Dynamic Stability and Traction Control)* gives you the benefits of the STC anti-spin system while automatically counteracting a skid as it starts, well before you even notice. If there is any tendency to slide, the brakes are instantly applied to one or more wheels as necessary to retain control. The system also includes EBA (Emergency Brake Assistance) which helps shorten the stopping distance in emergency braking.

* (Standard on 2.4T, 2.9 and T6. Optional on all other engines.)

VISCOUS COUPLING

Makes sure that the driven wheel with the best grip always gets most power, enabling you to make the most of engine resources. The result is greater stability and improved traction when cornering. Only available with the six-cylinder engines.

LOAD COMPENSATING SUSPENSION

For more stable roadholding, better comfort and unaffected ground clearance when driving with heavy loads or using the car for towing. The shock absorbers are automatically adjusted up to the level the car would have without the extra load. When the load is removed, the shock absorbers automatically return to their original position.



SAFETY

"CARS ARE DRIVEN BY PEOPLE, THE GUIDING PRINCIPLE BEHIND EVERYTHING WE MAKE AT VOLVO, THEREFORE, IS - AND MUST REMAIN - SAFETY."

ASSAR GABRIELSSON AND GUSTAF LARSON,
THE FOUNDERS OF VOLVO,

DUAL-STAGE AIRBAGS

The driver and passenger airbags register the collision force and adjust inflation accordingly - with full pressure for high crash forces, or reduced pressure if the crash force is lower. If the airbags are not needed, only the safety belt pre-tensioners will be deployed.

* The car can also be ordered without a passenger airbag.

SIPS SIDE-IMPACT PROTECTION

Distributes crash forces in a side impact across a large part of the body structure of the car so as to help minimise the strain on the occupants. IC inflatable curtains for all the occupants and the front seat side airbags offer head and chest protection.

IC INFLATABLE HEAD-PROTECTION CURTAINS

Offer protection irrespective of whether you are sitting in the front or rear. Inflates in a side-impact accident to protect the heads of all the occupants. The curtains remain inflated long enough to contribute to continued protection in complex collision sequences and help to keep the occupants within the car.

SAFETY CAGE

The sturdy safety cage surrounds all the occupants and is dimensioned to withstand extreme physical stress.

CRUMPLE ZONES

The front and rear crumple zones dissipate and distribute incoming collision forces so as to reduce the physical strain on the occupants.



ENERGY-ABSORBING INTERIOR

All the panels and door sides are padded with energy-absorbing materials to help reduce the risk of injury to the occupants.

PERSONAL SECURITY

An electronic immobilises and door locks that withstand most break-in attempts help protect against theft. Approach and Home Safe lighting make it easy to light up your path to and from the car. A remotely controlled anti-theft alarm with deadlocking system is standard.

WHIPS WHIPLASH PROTECTION

Volvo's own system for helping to reduce the strain on the spine and neck if the car is hit from behind at low speed. Built into the front seats and activated by a sufficiently severe impact.

SAFETY BELTS WITH PRE-TENSIONERS

All seats have head restraints and three-point safety belts with pre-tensioners. In a crash, the safety belt is pulled tight to help provide maximum protection. The front safety belts then slacken slightly so that the occupants are cushioned by the airbags in a controlled way.

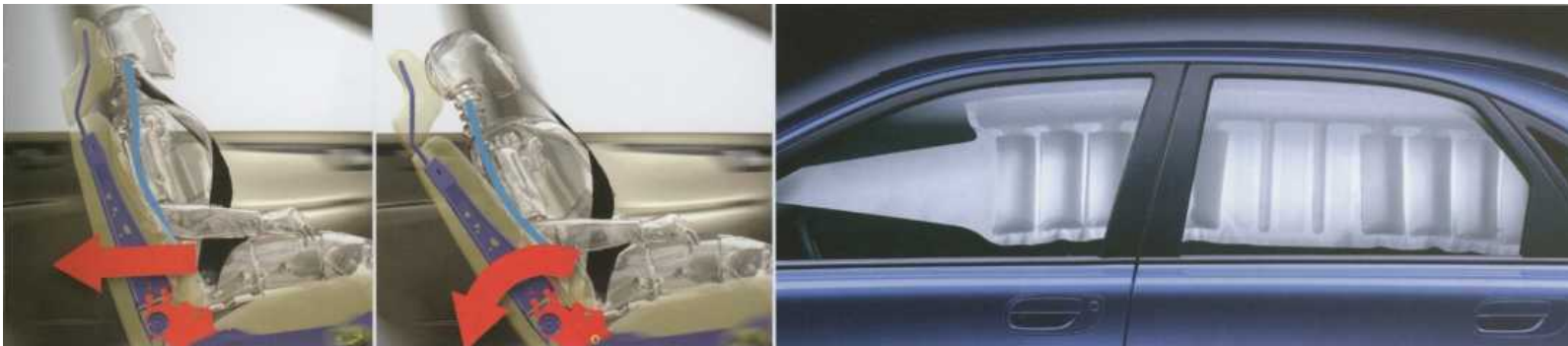
CHILD SAFETY

An integrated booster cushion in the rear centre armrest ensures that the safety belt is correctly positioned on the child (option). For younger children, there are Volvo's rearward-facing child safety seats with the ISOFIX attachment system for the outer rear seats and the front passenger seat if no airbag is fitted.

THE THRILL OF EXCITEMENT FOCUSES THE SENSES AND ENHANCES THE SENSATION OF BEING ALIVE. THE FEELING OF BEING SAFE ADDS TO BALANCE AND HARMONY - ALLOWING YOU TO ENJOY THE EXPERIENCE TO THE FULL.

In a Volvo S80, safety is built in from the very start. An advanced chassis and powerful brakes give you full control in all situations. Active stability systems boost the safety margins still further, for instance, if you are driving on slippery roads or are forced to take extreme evasive action.

And if an accident simply cannot be avoided, you and your fellow occupants are protected by the same world-leading safety systems that help save lives in other Volvo cars.



WHIPS (Whiplash Protection System) reduces the strain on the spine and neck in rear-end collisions. It is integrated in the front seats and is activated if a rear impact is sufficiently severe.

Volvo's unique SIPS side-impact protection system uses a large part of the body structure of the car to absorb the force of an impact. The IC (inflatable curtain) and side airbags provide maximum protection for the head and chest in a side impact.

REMOTE-CONTROLLED ALARM

Uses the same remote controller as the central locking system. The alarm is triggered if anybody attempts to open the doors, bonnet or boot lid. A movement sensor reacts to movement inside the car or if a window is broken. If you add a level sensor, the alarm is triggered if the car is jacked up.

OUTER REAR-VIEW MIRRORS WITH GROUND LIGHTING

Added security as you approach your car in the dark. The illumination also makes it easier to see puddles and pavement edges when getting in and out of the car.

ARMOUR PROTECTION

The Volvo S80 and S80 Executive are available with different levels of armour protection - special order only.



FOR YOUR SECURITY

- Laminated side windows
- Remote controlled alarm with movement sensor
- Inclination sensor
- Outer rear-view mirrors with ground lighting
- Armour protection
- Lockable wheel bolts
- Fire extinguisher
- First-aid kit



AUDIO AND ENTERTAINMENT

A GOOD AUDIO SYSTEM MAKES THE JOURNEY FEEL SHORTER. OUR MOST ADVANCED AUDIO SYSTEM WITH DOLBY SURROUND PRO LOGIC* GIVES YOU EXTREMELY AUTHENTIC SOUND REPRODUCTION. HIGH PERFORMANCE LOUDSPEAKERS AND A SEPARATE AMPLIFIER ENHANCE AUDIO QUALITY STILL FURTHER, WITH BROADER AND FULLER SOUND QUALITY - JUST LIKE HAVING YOUR FAVOURITE ORCHESTRA ALONG FOR THE RIDE,



HIGH PERFORMANCE LOUDSPEAKER SYSTEM

Specially designed for the acoustics in the Volvo S80. With up to 9 High Performance loudspeakers and a separate 4x50 W amplifier. These loudspeakers feature glass fibre cones, larger coils and more powerful magnets. This gives better transient reproduction, an extra-high power range and very low distortion - an even more natural sound, quite simply.

DOLBY SURROUND PRO LOGIC*

The radio HU-801 features Dolby Surround Pro Logic* with a built-in sound processor and a centre loudspeaker in the instrument panel. The result is clear, open and natural three-dimensional sound with a distinct presence. The audio experience is unique in the car world - you and your front seat passenger will enjoy the music as if you were sitting in a concert hall.

Dolby and Pro Logic are trademarks of Dolby Laboratories Licensing Corporation.

PERFORMANCE AUDIO SYSTEM

A great-sounding combination of economy and performance. With up to 8 loudspeakers including 2 coaxial loudspeakers in the hatshelf. Integrated radio with built-in CD player/cassette player or just a cassette player.

- HU-601 RDS radio with built-in 4x25 W amplifier, CD player/cassette player and up to 8 loudspeakers
- Two 8-inch coaxial loudspeakers in hatshelf (standard with HU-601 RDS)
- Can be supplemented with a separate 10-CD changer, and CD box in the glove compartment

HIGH PERFORMANCE AUDIO SYSTEM

High-class audio system to meet discerning natural sound reproduction. With 8 or 9 High Performance loudspeakers and a separate 4x50 W amplifier. Also available with Dolby Surround Pro Logic*. Integrated radio with built-in CD changer or CD player/cassette player.

- HU-801 RDS radio with built-in 4-CD changer, Dolby Surround Pro Logic, 9 High Performance loudspeakers and a separate 4x50 W amplifier plus 25 W for the centre loudspeaker
- HU-601 RDS radio with built-in CD player/cassette player, 8 High Performance loudspeakers and a separate 4x50 W amplifier
- Can be supplemented with a separate 10-CD changer and CD box in the glove compartment



REMOTE CONTROL FROM THE STEERING WHEEL

Makes it possible to adjust the volume, switch radio stations and play the previous or next track without taking your hands off the wheel. Also used for operating the integrated phone. With illuminated buttons.

RTI NAVIGATION SYSTEM WITH TV

The RTI navigation system can be supplemented with a TV for terrestrial channels. The 6.5" widescreen monitor gives high picture quality. The audio system is used for the sound. You and your passengers can watch TV when the car is at a standstill. To avoid distracting the driver, the TV picture is automatically switched off at speeds above 3 km/h. (Available in the PAL colour TV system, not in combination with rear seat TV in the Volvo S80 Executive.)



FOR DRIVING FREEDOM

IN ORDER TO FURTHER ENHANCE THE DRIVING EXPERIENCE, YOU CAN SPECIFY A VARIETY OF SPECIALLY DESIGNED OPTIONS. THERE IS EVERYTHING FROM VOLVO'S ADVANCED COMMUNICATION AND NAVIGATION EQUIPMENT TO FEATURES THAT MAKE YOUR TIME BEHIND THE WHEEL EVEN SAFER AND MORE COMFORTABLE.



RTI NAVIGATION SYSTEM

Helps you find the fastest route to your destination and to the nearest parking place, hotel, petrol station, restaurant, tourist site and so on. Audible instructions guide you when necessary. On the display screen, you can see where you are and how far you have left. You also receive advance warnings of traffic tailbacks and suggestions for alternative routes*. The system is controlled via menus and you do not need to take your hands off the wheel. All map-based information covering Western Europe is stored on one single DVD disc. RTI is also available with television.

LOCKABLE STORAGE BOX

If you need to leave your car temporarily, you can store your valuables in the lockable storage box. And once you lower the centre armrest, the box is invisible from outside the car.

ECC (ELECTRONIC CLIMATE CONTROL)

Maintains the set temperature inside the car, however much the temperature outside fluctuates or the sun shines in. Adjustable ventilation vents for the rear-seat passengers are included. And with the interior air quality system which helps prevent exhaust gases and odours from entering via the ventilation system, the air inside the cabin is cleaner than the air outside.

* Not currently operational in the UK

ELECTRICALLY-ADJUSTABLE FRONT SEATS

Make it particularly easy to adjust the seating position. The driver's seat is available with a memory function for three separate settings - highly practical when taking turns at the wheel.



CRUISE CONTROL

Allows you to drive in extra safety and comfort without having to keep your foot on the accelerator. Easy to operate via buttons set into the steering wheel.

RAIN SENSOR

Activates the windscreen wipers as soon as it starts to rain or if water splashes onto the windscreen. The degree of sensitivity can be adjusted via a ring on the wiper stalk.



PARK ASSIST, REAR

Makes it safer and easier to reverse. A buzzer inside the cabin makes an increasingly intense sound the closer you come to an object immediately behind the car.

AUTOMATIC ANTI-DAZZLE REAR-VIEW MIRROR

Prevents you from being dazzled by headlights from behind.

BI-XENON LAMPS

Provide you with even better low and high beams in all conditions without dazzling oncoming traffic. Low beam is adjusted automatically to provide the best possible light pattern when the car is heavily laden.

- Heat-reflecting windscreen
- Electrically-operated glass sunroof
- Cruise control
- Trip computer
- Automatic anti-dazzle rear-view mirror
- ECC
- Interior Air Quality System (AQS), standard with ECC
- Electrically foldable head restraints, rear
- Park Assist, rear
- Electrically retractable outer rear view mirrors with ground lighting
- Cupholder, front
- Coin holder
- Electrically-adjustable seat, driver or driver/passenger
- Memory function for electrically-adjustable driver's seat and outer rear-view mirrors
- Storage box, lockable
- Ashtray/Cigarette lighter
- Illuminated vanity mirrors
- Rain sensor
- Bi-Xenon headlamps
- Auxiliary lamps
- Snow chains
- Headlamp wipers/washers
- Heated seats, front
- Mudflaps, front and rear
- Integrated GSM phone
- Hands-free for GSM pocket phone
- RTI navigation system

FUEL ECONOMY	CYCLE*	mpg	l/100km
	URBAN	15.1-31.4	18.7-9.0
	EXTRA URBAN	28.0-55.4	10.1-5.1
	COMBINED	21.2-43.5	13.3-6.5
	CO₂ EMISSIONS	164-272	

VOLVO

Volvo Car UK Limited
www.volvocars.co.uk

