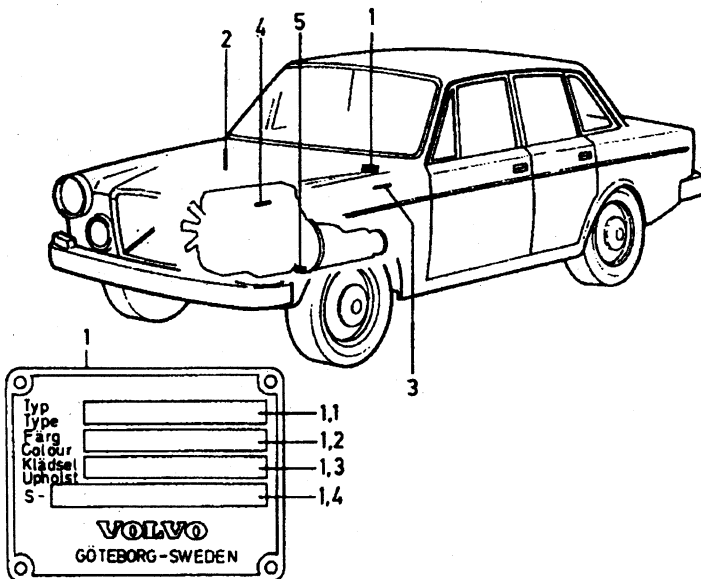


Plate Location

142,144,145

1967-74

1. Designation plate
 - 1.1 Type designation
 - 1.2 Color code
 - 1.3 Upholstery combination
 - 1.4 Special model
2. Type & chassis number
3. Body number
4. Engine designation
5. Gearbox



164

1969-75.

1. Designation plate ch-132566
 - 1.1 Type designation
 - 1.2 Color code
 - 1.3 Upholstery combination
 - 1.4 Special model
2. Type & chassis number
ch-132566

Designation plate ch 1325567-
(Chassis number, type number
color code, upholstery code,
special model)

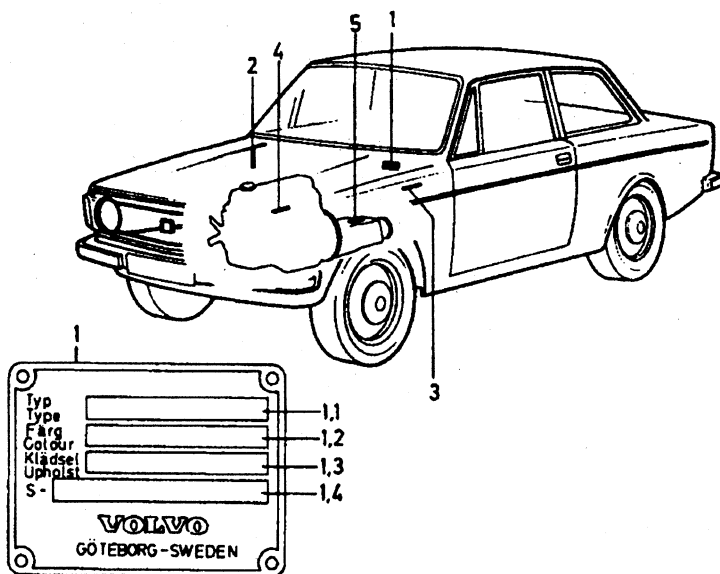
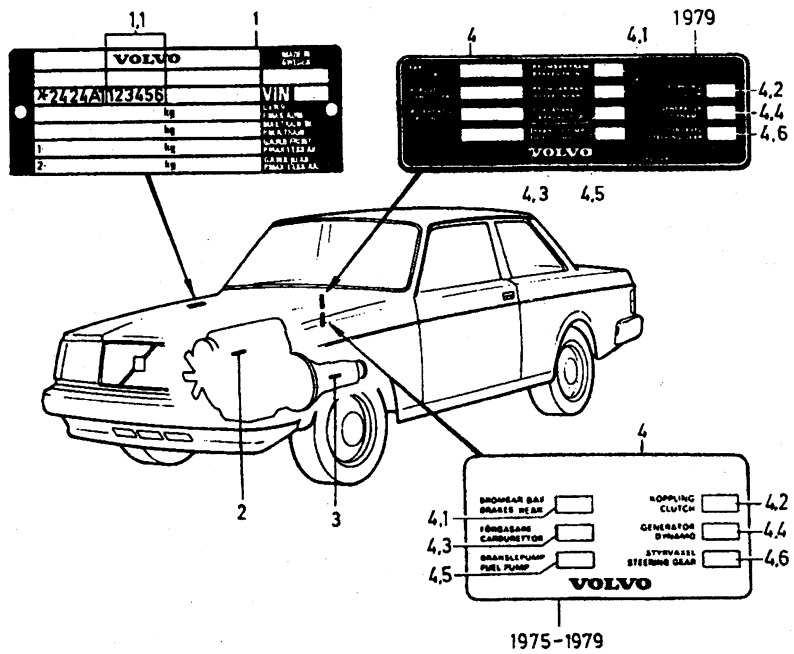


Plate Location

264,244,245,
262,264,265.

1975-79

- 1 Designation plate
- 1.1 Chassis number
- 2 Engine designation
- 3 Gearbox
- 4 Service label
- 4.1 Brakes
- 4.2 Clutch
- 4.3 Carburetor
- 4.4 Dynamo
- 4.5 Fuel pump



264,244,245,
262,264,265.

1980-93

- 1. Product sign
- 1.1 Chassis
- 1.2 Type symbol
- 1.3 Color code
- 1.4 Interior code
- 2. Motor symbol
- 3. Gearbox
- 4. Service label
- 4.1 Brakes
- 4.2 Clutch
- 4.3 Carburetor
- 4.4 Fuel pump
- 4.5 Alternator
- 4.6 Steering gear
- 4.7 Color code
- 4.8 Up code
- 4.9 Type number

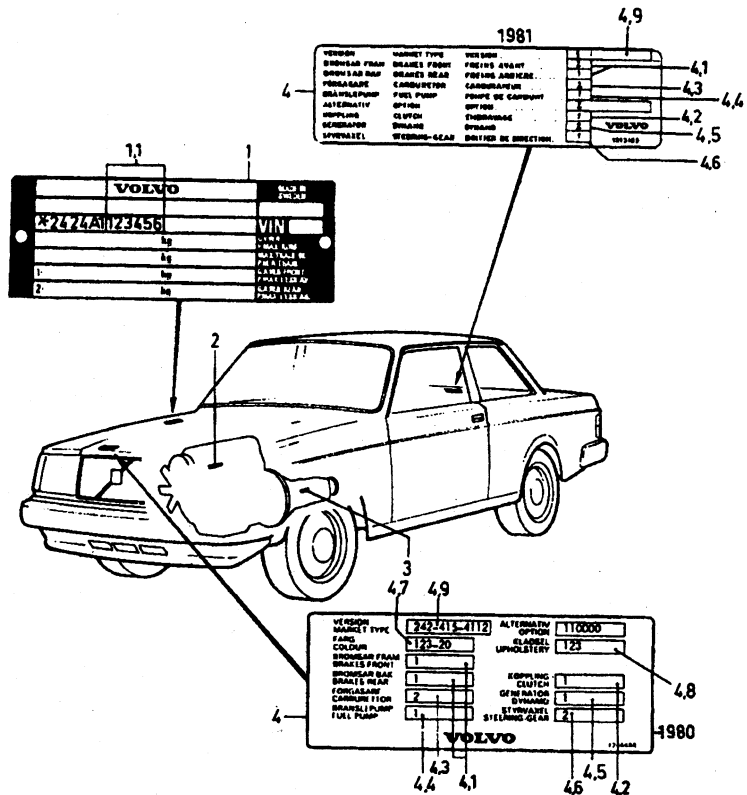


Plate Location

760

1983-90

1. Designation plate
 - 1.1 Chassis number
 - 1.2 Color code
 - 1.3 Covering code
2. Engine designation
3. Gearbox
4. Service label
 - 4.1 Type number
 - 4.2 Chassis type
 - 4.3 Marked 1=
 - Girling front, and rear.
 - Marked 2=
 - Girling front, and rear.
 - 4.4 Marked 1=Zenith-Stromberg.
 - Marked 2=SU
 - Marked 3=DVG
 - 4.5 Marked 3=Bosch
 - Marked 4=AC
 - 4.6 Marked 1= Borg &Beck
 - Marked 2= Fichtel&Sachs
 - 4.7 Marked 1= Bosch
 - Marked 2= SEV Marchal
 - 4.8 Marked 2= Cam gears
 - Marked 3=Zahnrad Fabrik ZF
 - Marked 4=TRW

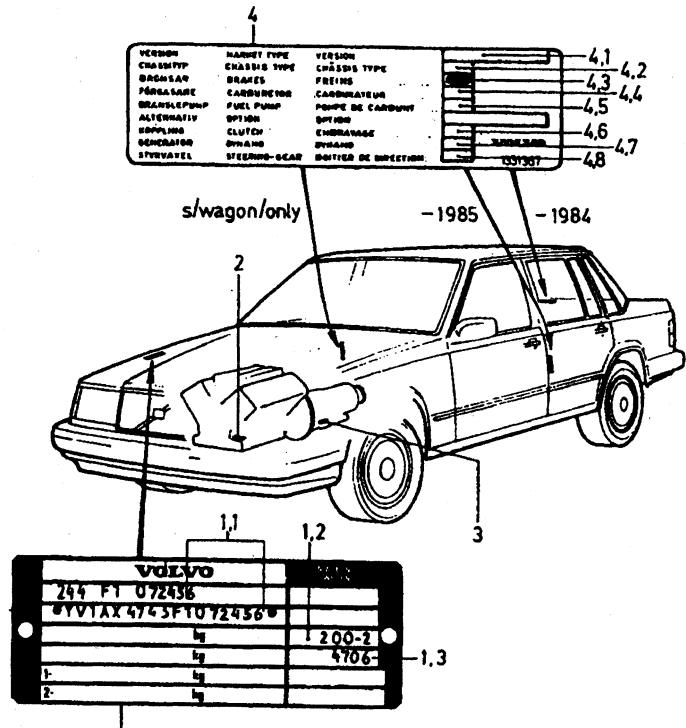


Plate Location

740

1985-92

1. Designation plate
 - 1.1 Chassis number
 - 1.2 Color code
 - 1.3 Covering code
2. Engine designation
3. Gearbox
4. Service label
 - 4.1 Type number
 - 4.2 Chassis type
 - 4.3 Marked 1= Girling front, and rear.
Marked 2= Girling front, and rear.
 - 4.4 Marked 1=Zenith-Stromberg.
Marked 2=SU
Marked 3=DVG
 - 4.5 Marked 3=Bosch
Marked 4=AC
 - 4.6 Marked 1= Borg &Beck
Marked 2= Fichtel&Sachs
 - 4.7 Marked 1= Bosch
Marked 2= SEV Marchal
 - 4.8 Marked 2= Cam gears
Marked 3=Zahnrad Fabrik ZF
Marked 4=TRW

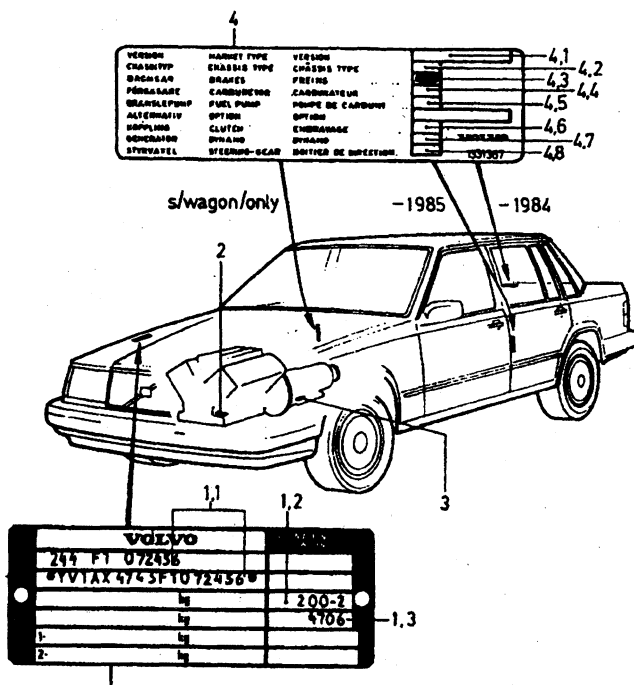


Plate Location

780,940,960 S90/V90

1986-91,1991-

1. Product plate,location
2. Vin plate,location
3. Vehicle type
4. Model year M=1991 R=1994
N=1992 S=1995
P=1993 T=1996
5. (Work code)
6. Chassis number
7. (Manufacture code)
8. Series J=940 K=960
9. Safety system -91, 92- Body type+safety system.
10. Engine type 69=B280F
83=B230FD (Pulsair+E.G.R)
86=B230FT (E.G.R)
87=B230FT (W/o E.G.R)
88=B230F
89=B234F
93=B6254S (E.G.R. TWC)
95=B63045 (TWC)
96=B6304S (E.G.R, TWC)
11. Body type -91 2=2-door 1992-Emission
4=4-door
5=5-door
12. (Check figure,calculated from other digits)
13. Year model code
14. Manufacturing plant
15. Serial number (chassis number)

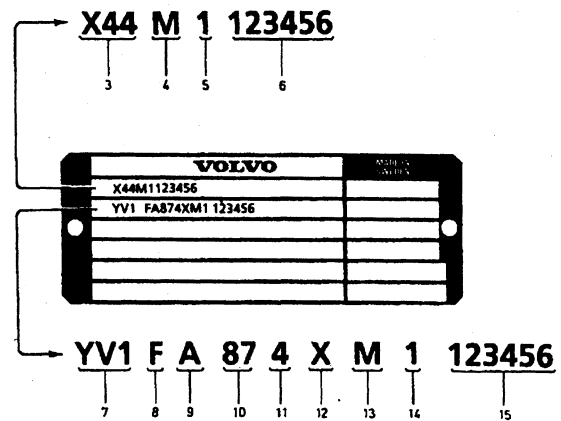
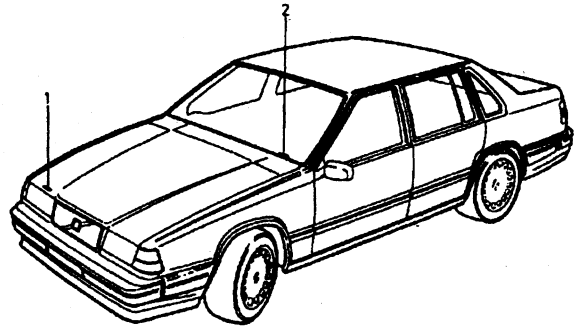
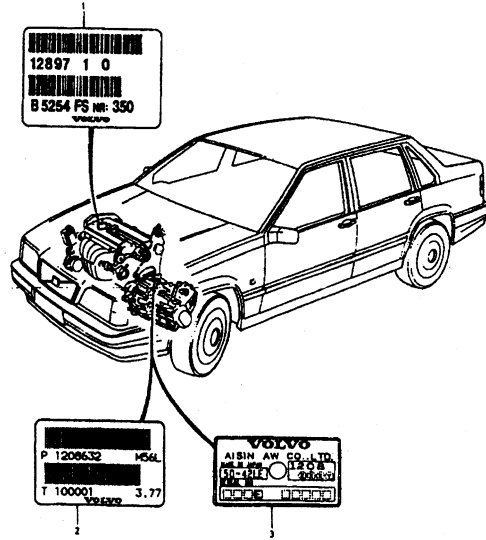


Plate Location

850

1993-

1. Designation plate engine
2. Manual gearbox
3. Automatic gearbox



Product plate

1. Product plate, location
2. Vin plate, type
3. Vehicle type
4. Model type P=1993 S=1995
 R=1994 T=1996
5. (Works code)
6. Chassis number
7. (Manufacturer code)
8. Series L=850
9. Doors S=4 DRS
 W=5 DRS
10. Engine type 51=B5252S
 55=B5254S
 57=B5234T
 58=B5234T5
11. Emission O=Code:9,32,EM A,EM C 1
 l=Code:25,36,EM D3
 2=Code:40,EM E,EM G5
 3=Code:42
 4=Code:EM GI
12. (Check figure, calculated from other digits)
13. Year model code
14. (Manufacturing plant)
15. Serial number (chassis number)
16. (Market code)
17. Interior fitting code
18. Paint code, suffix not stated in catalog
19. Special vehicle number
20. Spring strut
21. Stabilizer, front
22. Shock absorber, rear
23. Spring, rear
24. Stabilizer bar, rear
25. Bump rubber (front/rear)

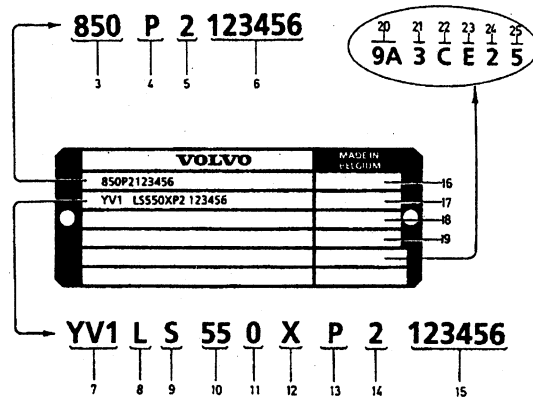
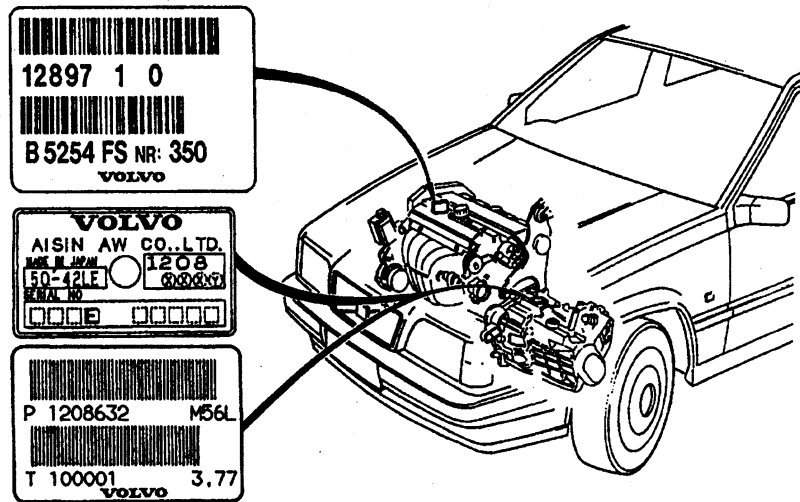


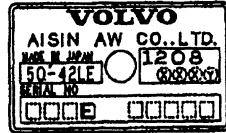
Plate Location

70S/V70/C70

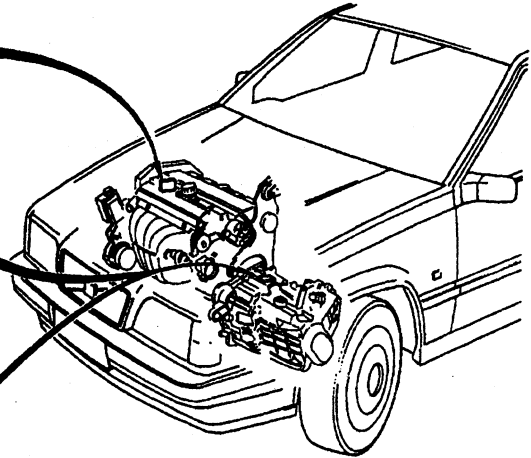
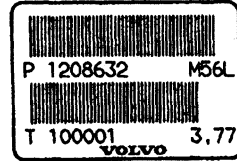
Engine type, number



Automatic gearbox



Manual gearbox



Product plate

1. Product plate, location
2. Vin plate, location
3. Vehicle type
L=S70/V70/V70XC
N=C70n
4. Doors
.S = 4DRS
.W = 5DRS
.K = 2DRS
.C = 2DRS (CAB.)
5. Engine type
6. Emission
7. Gearbox
.2=M56
.6 = AW42
8. Year model code
9. Plant code
10. Chassis number
11. Marked code
10 = Sverige
12. Interior fitting code
13. Paint code
14. Special vehicle number
15. Spring strut
16. Stabilizer bar, front
17. Shock absorber rear
18. Spring, rear
19. Stabilizer bar, rear

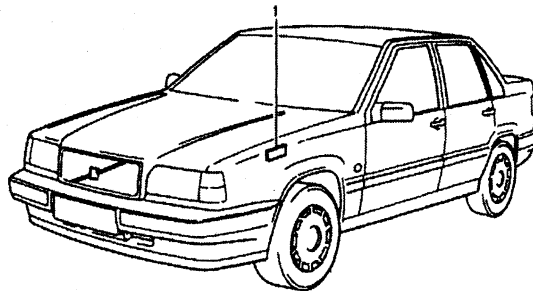
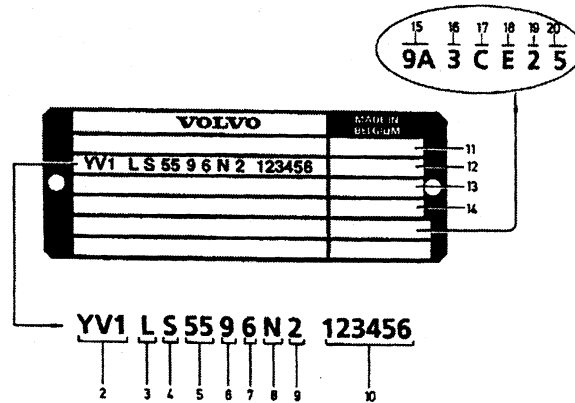


Plate Location

S80

Type,model year designation and chassis number.

2 Type designation,chassis number, permitted weights and codes for paint and upholstery and type approval number.

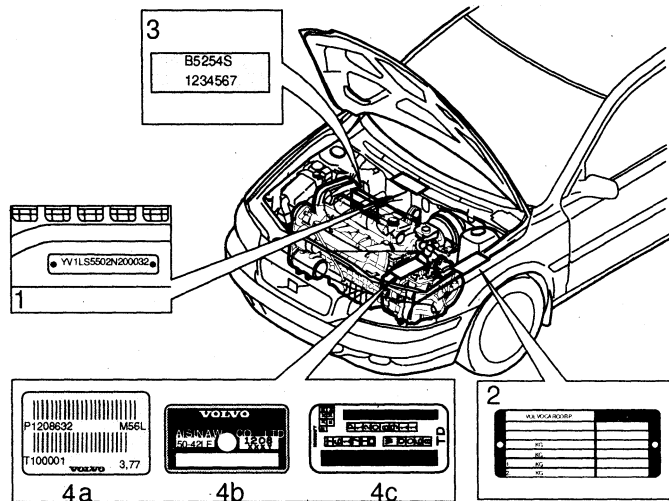
3 Transmission type designation, component and serial number.

4 Transmission type designation,component and serial number.

a: Manual transmission:on the front side.

b: Automatic transmission AW:on the upper side.

c: Automatic transmission GM:on the rear side.



Product plate

1 Product plate,location

2 Vin plate,location

3 Vehicle type

4 Model year X=1999

5 Factory code

6 Chassis number

7 Manufacturer code

8 Vehicle type T= P23

9 Doors S= 4 DRS

10 Engine type:

43 = B5204 T3

48 = B5204 T4

90 = B6284 T

97 = B6304 S3

11 Emission

C = KOD: EM M4

D = KOD: EM M5

12 Gearbox EXC(USA)(CDN)

2 = M56,M65 manual gearbox

5 = 4T65 EV,4T65EV-GT automatic gearbox

6 = AW42 automatic gearbox

Check figure (USA)(CDN)

13 Model year X=1999

14 Factory code

15 Chassis number

16 Marked code

17 Interior fitting code

18 Paint code

19 Special vehicle number

20 Spring support

21 Stabilizer front

