



# VOLVO V90







## Contents

Volvo V90.....	12
Exterior design.....	14
Interior design.....	16
Versatility.....	20
Sensus.....	22
IntelliSafe.....	28
Drive-E.....	36
Chassis.....	40
Ownership.....	42
<b>Your choice</b> .....	
Powertrains.....	44
Trim levels.....	46
V90 Momentum.....	48
V90 Inscription.....	54
V90 R-Design.....	62
V90 Cross Country.....	70
V90 Cross Country Volvo Ocean Race.....	84
Accessories.....	92
Lifestyle Collection.....	100













WHY WE INNOVATE



Because you have a wave to catch  
And a mountain to climb  
Because you promised the kids to go skiing tomorrow  
Because you need a break  
And sometimes a brake  
Because elks don't read road signs  
And neither do cows or kangaroos  
Because parallel parking should be a cakewalk  
Because you appreciate beauty and craftsmanship  
Because you love the feel of hand-stitched nappa  
Because you like your coffee hot and your water chilled  
Because you have blind spots  
Because it's been a long day  
And you deserve a massage from your car seat  
Because you don't have eyes in the back of your neck  
Because you want to be in control  
Because you expect to be entertained  
And informed  
And occasionally pampered  
Because you forgot where you parked  
Because you would rather share than own  
Because there are road works today  
Where there were none yesterday  
Because we want to impress you  
And that isn't easy  
Because you care about the future  
Because we live on a finite planet with finite resources  
Because you're human  
Because time is not money, but life

# WHEN WE INNOVATE, THE CAR IS NOT TOP OF MIND.

We admit it. You fascinate us. We think and talk about you all day. Everything about your life – its ups and downs, joys and disappointments, needs, demands, frustrations and hopes – captivates us.

So when we innovate, every detail – from service design right down to the teeniest screw – has to justify itself to you. Does it add anything? Is it useful?

All this time spent thinking about your life has allowed good things to happen. Perhaps you didn't know, but we have a vision that by 2020 nobody dies or is seriously injured in a new Volvo. Nice-sounding words? Not at all, it's realistic and achievable.

We know you live a rich, fulfilling life in almost every way. We say almost, because there's one commodity you seem to be short of. Time. So by 2025, we aim to pack every new Volvo with enough smart solutions to free up a whole week of quality time per year. 168 hours to do with as you please.

We also know you care about the future of the planet. That's why our Drive-E technologies allow you to drive sustainably – without compromising on performance. We know you want to stay connected to the world around you. Our Sensus solutions ensure you are. We know you always want to feel in control. Our IntelliSafe technologies not only help to save lives, but also give you more enjoyment behind the wheel.

And we know you're interested in self-driving cars. Each day we take pioneering steps in our quest to deliver a safe and relaxing autonomous driving experience. The same goes for fully electrified powertrains. And even smarter services.

We happily walk the extra mile to give you what you want.

***You are why we innovate.***



## **BEAUTY AND FUNCTION IN HARMONY**

*A sophisticated estate, built for the way you live.*

**We created the V90** for a world that demands versatility, without compromising elegance and sophistication. From the exterior's clean, taut lines to the spacious, light-filled cabin, this is an estate car that combines powerful good looks with everyday practicality.

In the V90, technology supports you without overwhelming you. From semi-autonomous driving technology that makes driving both safer and more enjoyable to the T8 Twin Engine plug-in hybrid powertrain, each of the advanced features has been engineered to improve every journey.

Underneath the crisply sculpted exterior lies a chassis that delivers the perfect combination of precise handling and welcome comfort.

Smart technology keeps you seamlessly connected with the car and the world around you. And with the very latest in safety innovations, you will travel safe in the knowledge that your V90 will help looking out for you, your passengers and other road users.

This is the Volvo estate reinvented, built to enhance every day.

**Inscription**

711 Bright Silver metallic |  
20" 8-Spoke Silver/Diamond Cut, 214



**Distinctly Volvo.** You'll recognise the V90 as a Volvo from any angle. The bold lines convey solidity and strength, the details are subtle and distinctive. It's the combination of these qualities that makes the V90 a truly modern Volvo.

The rake of the rear window adds dynamism and the tall LED taillights, with their slender vertical shape, are both contemporary and classically Volvo. An estate with style and presence and a car to be proud of.





**Inscription**

711 Bright Silver metallic |  
20" 8-Spoke Silver/Diamond Cut, 214





**Fine Nappa Leather Perforated**  
Blond in Blond/Charcoal interior WC00 |  
Linear Walnut inlay | Tailored dashboard  
(Not available in UK)



## **DESIGNED FOR CONTROL**

*Precision and accuracy at every touch.*

**From the moment** you settle into the sculpted driver's seat you're in control. You sit low in the V90, with the 9-inch centre display with touch screen angled towards you to create the feeling of a cockpit. You're surrounded by an environment where beautiful materials and advanced technology meet, creating a cabin that looks great and works perfectly.

The exceptional craftsmanship enhances the feeling of precision. Take the air vents, for example. With a metal-finish vertical strip and distinctive diamond-pattern surfaces for the control knobs they are beautiful to look at and a pleasure to use. In the V90 every component moves with the accuracy afforded by fine engineering. It is a car that gives you control over every part of your journey.



## LIGHT. SPACE. LUXURY.

**Travel first class** in every seat, every day. Because when you're in the V90 you're in your own private lounge, a place where comfort and luxury combine with technology and craftsmanship.

It starts with the front seats. Sculpted to complement the human form, they provide superb support and a huge range of adjustment, so everyone can find the ideal seating position. Optional ventilation and massage functions provide even greater comfort.

The shape of the backrests increases legroom for passengers in the rear. The rear seats are designed to cosset and support, while optional four-zone climate control, retractable rear sun blinds and individually controlled heated outer rear seats add to the sense of luxury.

A panoramic glass sunroof that floods the entire cabin with light is a design highlight. Tinted to prevent glare, this optional feature opens to create an even more airy feel, and can be closed remotely using the remote key fob.

At night the cabin glows with the warmth of its interior lighting, welcoming you into the car. The optional high-level illumination lighting package includes backlit door handles and illuminated tread plates,

as well as additional interior lighting that enhances the exclusive ambience.

Our CleanZone technology helps ensure a healthy interior environment and clean cabin air. It filters dust, pollen, particulates and odours while monitoring the air quality and closing the intakes if pollutant levels rise too high. It happens automatically – all you need to do is set the temperature you want and the V90 does the rest. With the four-zone climate control, rear seat passengers can choose their own settings using a dedicated touch screen. It also includes an air-conditioned glove compartment that keeps its contents cool.

The clever design and versatile interior layout make your life easier. The shape of the load compartment means it's easy to fit in awkwardly shaped objects, and a single touch on each of the rear seats allows you to fold them for a longer, completely flat load space. For the power operated tailgate there's an optional hands-free function, so you don't have to put down what you're carrying to open it. In the V90, technology and convenience go hand in hand.



In the driver's seat you're in charge. Control functions such as navigation and entertainment from the steering wheel buttons, while the optional 12-inch driver display keeps you informed.



Every element of the cabin is crafted to make form and function one. The door handles can be backlit, making them easier to find in the dark.



Beautiful, natural materials such as Linear Walnut complement the car's advanced technology, creating a uniquely contemporary look.

## READY FOR EVERY OCCASION.

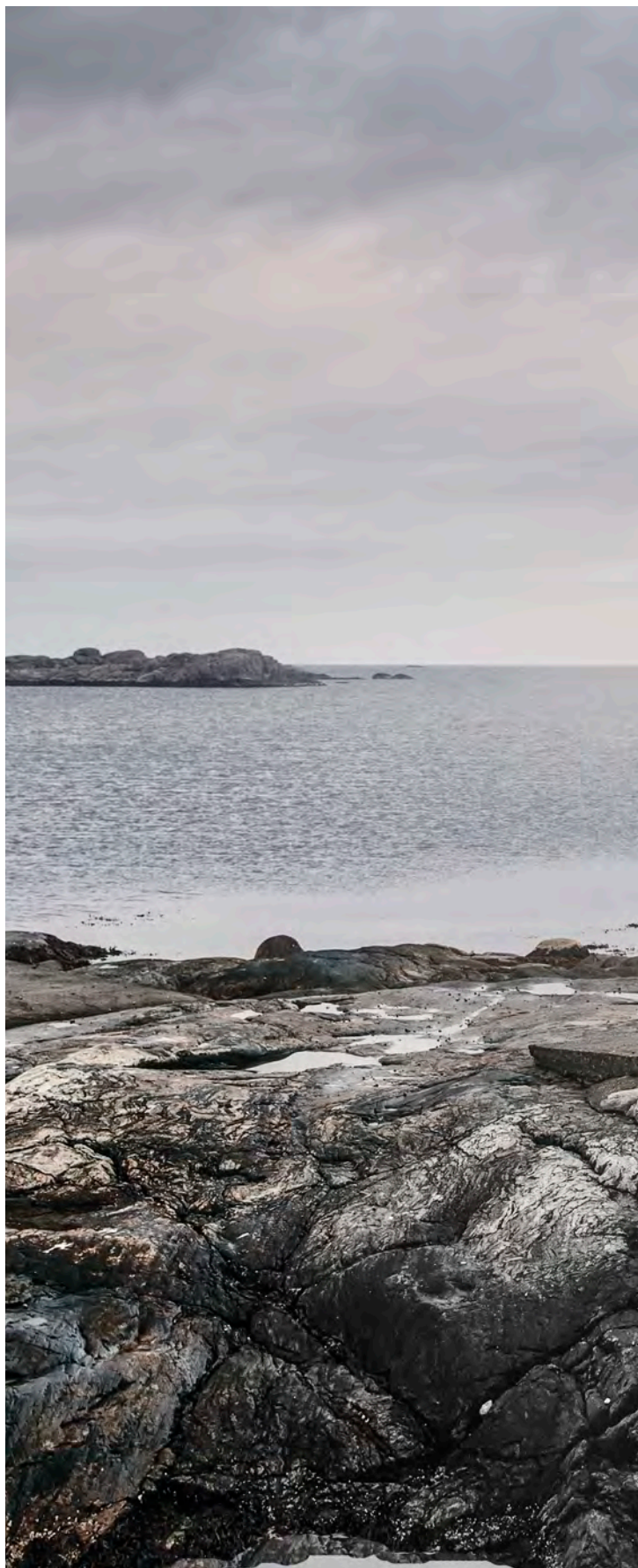
*A car that fits your life – all of it.*

**Smart versatility makes** every day easier and allows you to make more out of every moment.

The shape of the load compartment makes the V90 easy to load, with the rear seats folding at the touch of a button to create a longer, completely flat load space. You can do this from inside the load compartment so you don't have to open the rear doors to fold the seats. The through-loading hatch means you can carry long items such as skis without folding the seats.

The power-operated tailgate has a hands-free function, so if your hands are full you don't have to put down what you're carrying to open it. Just move your foot under the rear bumper to automatically open and close the tailgate.

To make your V90 even more useful, add extra equipment from our range of load compartment accessories. From dividers that split the compartment in two so you can carry two pets (or a pet and luggage) to a steel grille that provides a sturdy barrier between load and passenger compartment, there's an accessory for every occasion.





## STAY CONNECTED AND IN COMMAND.

**We create technology** to serve you and make life easier. Everything that's complicated or doesn't add to your experience is removed.

You control your Volvo intuitively and easily. And seamlessly connected with the car and the world around you, you're in command of every aspect of your journey.

Instead of a multitude of physical buttons, you find a large, 9-inch centre display with touch screen. It's as easy and straightforward to operate as your smartphone, with bold, clear graphics so you can keep your attention on the road. The touch screen blends seamlessly with the car's clean interior design, and is easily operated. You can even operate it wearing gloves.

Essential driving information is clearly presented in our 12.3-inch driver display. It adapts to your needs, preferences and surrounding light, so information is always shown on your terms.

For even better control, our head-up display projects vital driver information at a comfortable view distance. It looks like the graphics hover in front of the car, which allows you to stay informed without taking your eyes off the road.

Your Volvo also listens to you. Keep both hands on the steering wheel and speak naturally: our voice control will carry out your command to operate climate control, navigation, entertainment and your smartphone.

In a Volvo, you and your car act as one.







#### Sensus Navigation

Let Sensus Navigation guide you, inform you and help you find the best route. Road directions are clearly shown in the driver display, centre display and head-up display. Touch screen controls allow you as well as your passenger to operate the system conveniently and safely. Or talk naturally to your Volvo, and let our voice control carry out your commands while you having full attention to traffic. With the Volvo On Call app, you can also send the destination to your car before you go. And helping to save time, our in-car navigation apps can help you find and pay for parking, share your location with friends or simply find the best coffee in town. If you drive our T8 Twin Engine plug-in hybrid, the navigation system can also help you optimise the use of pure electric power all the way to your destination. Free life-time map updates ensure your navigation system is always up to date.

## FEEL THE MUSIC.

**Inside the cabin** of your Volvo you can enjoy an audio system designed to put you closer to the music you love, wherever you're seated.

All our audio systems are tailored to the acoustics of your Volvo. Our audio philosophy is very simple: it's all about the soul of music, not the number of speakers or watts. And together with the audio specialists at Bowers & Wilkins and Harman Kardon®, we have created some of the best-sounding audio systems in the class.

Our new audio system, Harman Kardon® Premium Sound, delivers a beautifully balanced, powerful sound. This immersive experience is enabled by 14 hi-fi speakers including an air-ventilated subwoofer that produces a bass sound you'll feel in your body.

If you're truly passionate about music, the Bowers & Wilkins audio system will take the experience to an even higher level. The 19 separate high-end speakers – including a tweeter-on-top centre speaker that minimises acoustic reflection from the windscreen and our unique air-ventilated subwoofer – will surround you with a powerful, pristine sound that feels more spacious and true to life than ever.

It's all about music and making it possible for you to experience it just as it was intended when it was created.



**Harman Kardon® Premium Sound** is developed together with the hi-fi specialists at Harman Kardon®. Powered by a 600W digital amplifier, the 14 speakers are tailored to the acoustics inside your Volvo and deliver a powerful, high fidelity surround sound experience. A unique sound processing software – Dirac® Unison Tuning – optimises the response of each individual speaker as well as the speakers all together to ensure they perform in perfect harmony. So wherever, you're seated, you and your passengers can enjoy a seamless first-class listening experience in all conditions and – not least – an extremely unified and tight bass sound.



**Our Bowers & Wilkins audio system** integrates seamlessly with the cabin architecture of your Volvo to deliver the most realistic immersive sound possible. Innovative audio processing technology with three room modes allows you to recreate the acoustics of a specific room inside your Volvo, bringing you even closer to the music. And to enable extremely low and undistorted bass tones, the air-ventilated subwoofer uses innovative technology that allows it to pulse large amounts of air, actually turning the cabin into one big woofer.



**Smartphone integration.** Use your smartphone in a smarter way. Via Apple CarPlay™ or Android Auto™, you simply integrate the familiar functions and interface of your smartphone\* with the car's centre display. You can enjoy music, make calls and send messages easily via the car's touch screen, steering wheel buttons or voice control.

\*Supports iPhone® (5 or later) or Android smartphones (5.0 Lollipop or later).

**Intuitively connected.** You operate the audio system and hands-free phone easily using the touch screen controls, steering wheel buttons or voice control. Bluetooth® connection also allows convenient streaming of music via your phone. Within easy reach on the car's touch screen, there's also a Spotify® in-car app that makes finding new music quick and easy without you having to connect your phone. Using Volvo On Call, you can also create a wifi hotspot in your car with a stable internet connection for you and your passengers' mobile devices.

# VOLVO ON CALL. YOUR PERSONAL ASSISTANT.

The **Volvo On Call app** connects your car with the rest of your world, helping make life less complicated. It's there when you need it, so your car becomes more than just a means of travel – it's your personal assistant.

You can use it to make your car ready for the drive to the office, or the drive home, by remotely cooling or heating the cabin. It can help you find a parking space, then take you straight to it. You can sync your Volvo On Call app with your calendar, so if you've got appointments it will tell your car where they are and how to get there. And it keeps you safe, automatically contacting emergency services if you're involved in an accident and telling them where you are.



## YOUR DAY MADE EASIER WITH VOLVO ON CALL

*From saving you time in the morning to helping you relax on the way home, Volvo On Call can be an indispensable part of your daily routine.*



### THE PERFECT START

*When you get into the car in the morning it's warm and defrosted, thanks to the Volvo On Call app's ability to run the heater. En route, you press the On Call button in the car and ask the operator to send your destination to the car's navigation system, so you don't have to manually enter it.*



### FIND YOUR CAR

*You've forgotten where you parked, so you use the car locator map to find the street and then use the flash lights function to pinpoint the car.*



### WHERE NEXT?

*A calendar card shows your next meeting. You push a button in the app, sending the address to the car's navigation system.*

07.30 11.00 12.00



13.00

**DELIVERIES TO YOUR CAR**

The shoes you ordered yesterday using In-car Delivery are delivered to the boot of your Volvo (expected late 2018).

14.45

You get a notification that your order has been delivered to the boot of your car.

**REMOTE CONTROL COMFORT**

You set the parking heater to warm the car interior so it's ready for when you leave the office.

17.15



17.45

**WIFI ON THE GO**

You head for home. Using the wifi hotspot you can stream music via your phone to the car's audio system.

**READY FOR A NEW DAY**

A notification reminds you that you've got a meeting in the morning. You send the location to the Sensus Navigation system and set the parking heater timer to come on before you leave.

22.20



## **PILOT ASSIST. DESIGNED TO MAKE DRIVING SAFER AND EASIER.**

**Our latest advances** in semi-autonomous driving technologies allow you to enjoy smooth, intuitive driving from standstill up to motorway speeds.

To make driving in demanding traffic less stressful, we created Pilot Assist and Adaptive Cruise Control. This means your Volvo automatically helps you maintain a safe distance from the car in front of you by adapting your speed while helping to keep you centred in the lane by automatically making small steering adjustments. It's intelligent too: using map data from the car's navigation system, the car identifies hills ahead and adapts the speed to help optimise your comfort and safety.

This technology also makes driving in stop-and-go traffic more effortless. Maintaining the set distance, your car follows the car ahead of you and brakes automatically to full stop when needed. And if the car in front just makes a short stop, your car starts following it as it takes off again.

This is driving made safe and easy, with the aim to optimise your control, comfort and convenience.

**Please note:** The driver is always responsible for how the car is controlled, the functions described here are only supportive.



## CITY SAFETY TECHNOLOGY. YOUR PRO-ACTIVE PARTNER ON THE ROAD.

With advanced pro-active safety technology we add extra power to your senses and enhance the confident feeling of being in control.

At the heart of our safety technologies is City Safety. By helping you to keep a lookout and brake or steer away if necessary, it makes driving more enjoyable while helping to prevent accidents.

City Safety can identify other vehicles, pedestrians, cyclists and large animals ahead of you, even at night. It warns you if needed and can brake automatically to help you avoid a collision or reduce the impact. And our advanced Oncoming Mitigation by Braking technology – a Volvo safety world first – can detect if there's another vehicle driving towards you and brakes automatically to help mitigate the impact.

Your Volvo can also support if you're forced into a rapid evasive action at speeds between 31 and 62 mph. As you begin to steer away, City Safety can help you do it as effectively and safely as possible by braking the inner wheels individually and reinforcing your steering input.

City Safety is simply your perfect co-pilot: pro-active when it's needed, and staying discreet in the background the rest of the time.



### Oncoming Mitigation by Braking

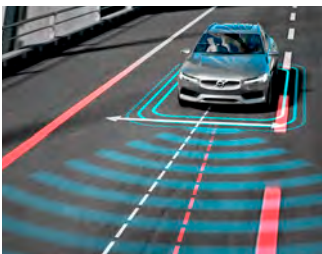
A Volvo Cars safety world first, this innovation can detect vehicles heading towards you on the wrong side of the road. If a collision can't be avoided, it will brake your car automatically to help reduce the effect of a collision.



### Oncoming Lane Mitigation

Using automatic steering assistance, this system helps you avoid collisions with oncoming vehicles. If you drift across the lane markings in the way of an oncoming vehicle, your car steers back.





#### Lane Keeping Aid

If you're about to cross a lane marking unintentionally, the Lane Keeping Aid will gently steer your car back into its lane. If this is not enough or you keep steering across the lane markings, you'll be alerted with vibrations in the steering wheel.



#### Run-off road Mitigation

Stay safely on the road with this Volvo Cars safety innovation. If Run-off road Mitigation detects you're about to leave the road unintentionally, it uses steering input and, if necessary, brake support to guide you back on track.



#### BLIS™ with Steer Assist

BLIS™ alerts you when a vehicle enters your blind spot or approaches fast from behind. If you nonetheless drift into the path of another vehicle, BLIS™ can gently steer you back into your lane.



#### Active Bending Headlights with Adaptive Shadow Technology

To give you the best view, our LED headlights allow you to drive with high beam on all the time, without dazzling others. It detects road users ahead of you and automatically shades the part of the high beam that would dazzle them.

## PERFECT PARKING, EVERY TIME.

In a Volvo, you can enjoy smooth parking.

Our navigation system gives you access to an in-car app that helps you find the nearest free parking space and even pay for it. When parking, you're supported by front and rear park assist functions that alert you if there are obstacles in your way. And by adding our 360° camera, you get a detailed bird's eye view of the area surrounding your Volvo – a great help when you reverse or manoeuvre in confined areas with impaired visibility.

If you want, our Park Assist Pilot can park the car for you. It measures the parking space, and if the space is at least 1.2 times the length of your car it can park by taking over the steering. Park Assist Pilot handles both parallel and perpendicular parking, and can also assist when leaving a tight parallel parking space.

And to make it easier when you reverse out of a parking space, Cross Traffic Alert helps you keep a lookout on approaching vehicles in your blind sectors.



### 360° camera

The 360° camera uses images from discreetly mounted cameras to create a bird's eye view of your car and its closest surroundings. In the centre display, you can see obstacles all around you, which makes it easier to park and manoeuvre in tight spaces.







## PROTECTING WHAT'S MOST IMPORTANT.

**Protecting you and** your passengers has always been at the heart of every car we make, and the advanced safety features in your Volvo are the result of decades of passionate innovation.

In a Volvo, it's the interaction between all the safety features that determines how efficiently the car will protect you and your passengers in a collision. Everything, from the design of the seats to the surrounding safety cage and the safety belts and airbags, works together to help minimise the strain on all occupants and maximise protection.

The front seats not only provide world-class comfort. They are also designed to protect you in the event of an impact. Our unique whiplash injury protection helps protect your back and neck if your car is hit from

behind. And in a Run-off road scenario, the energy-absorbing front seat structure will help protect your spine in a hard landing, should the car become airborne.

Your Volvo can even sense and prepare for impact. The optional prepared front safety belts tighten automatically if the car detects that a collision is likely, to ensure you're in the safest position should one occur.

It's this range of safety technologies and attention to detail that makes your Volvo a safe place to be.



### Crash-absorbing front seats

The sculpted front seats in your Volvo are more than just beautiful to look at. Their unique structure helps to absorb vertical impacts, helping to protect your spine if the car lands heavily after leaving the road. It's another example of how we make every part of a Volvo work harder for your safety.

### Volvo safety cage

The passenger compartment uses a high percentage of ultra high-strength boron steel to create a protective cage around everyone inside the car, while front and rear deformation zones help dissipate the crash energy. The safety belts and airbags work together to cushion you and your passengers in a controlled fashion.



### Child safety

At Volvo Cars we've spent decades continually researching and improving child safety. Our unique approach includes creating and carrying out tests based on real-life traffic situations, as well as testing our child seats alongside our cars. With our latest range of child seats, we offer unparalleled protection.

## ENJOYING MORE, USING LESS.

**With the perfect** balance between performance and efficiency, every Volvo powertrain gives you a great drive with low fuel consumption and reduced emissions.

The combination of lightweight, low-friction engine design and advanced boosting technology allows you to enjoy outstanding performance and a smooth, agile driving experience. Smaller engines lose less energy through friction so they can make every drop of fuel work harder to minimise emissions. We've used low-friction components to make them run smoother and more efficiently. Reduced size and weight also frees up interior space and contributes to the car's dynamic handling.

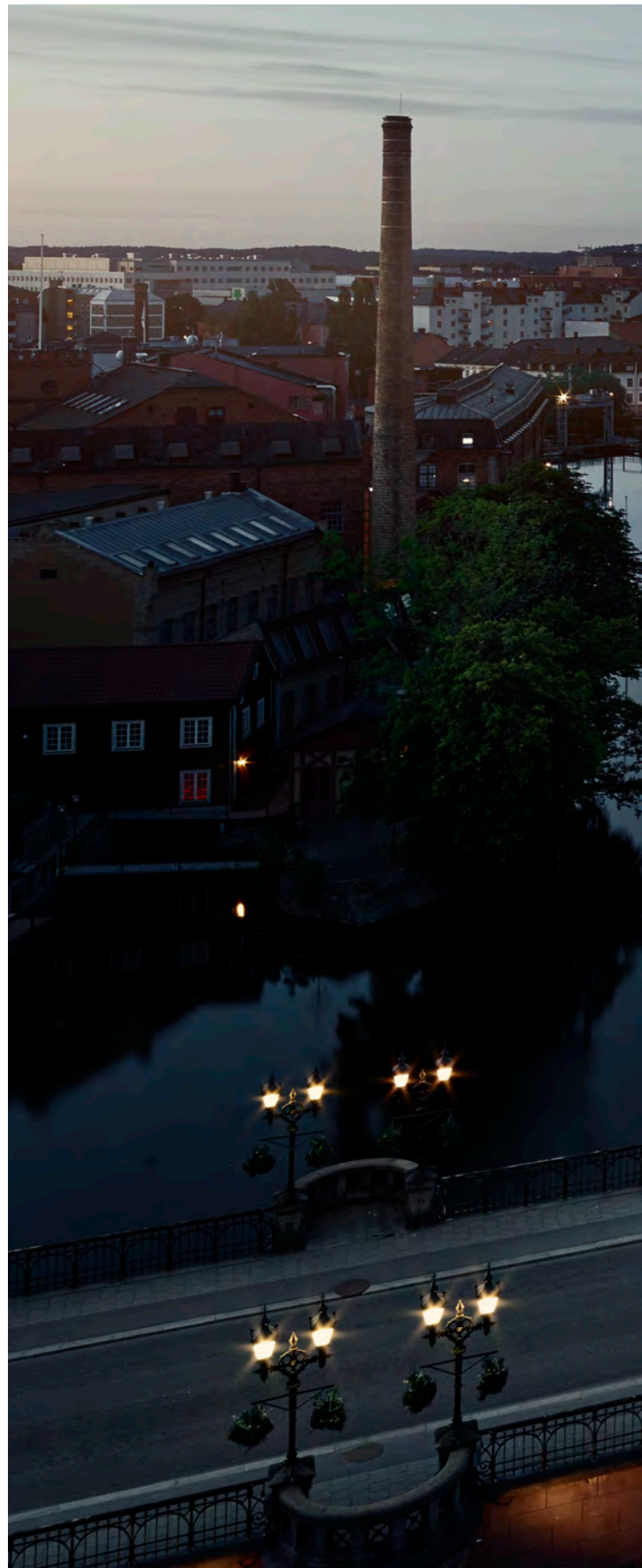
This innovative approach also makes driving fun. Choosing the 235hp D5 diesel powertrain, you can enjoy PowerPulse. At lower speeds and from standstill, it activates the turbocharger as soon as you press the accelerator to give an instant boost of acceleration. And if you go for our 310hp T6 petrol powertrain, a combined supercharger and turbo give you instant power at all revs. It's Volvo technologies like this that allow you to experience the power of a much larger engine from a compact four-cylinder, so you get the perfect mix of power and efficiency.

All our powertrains are quiet and smooth to give you a relaxing journey. In our diesel engines, for example, the i-ART injection technology precisely meters exactly the right amount of fuel for each cylinder to make the engine run more smoothly while using less fuel. And to help minimise health-impairing emissions, the latest generation emission control with Selective Catalytic Reduction reduces emissions of nitrogen oxides (NO<sub>x</sub>) by up to 90%.

The precise eight-speed automatic gearbox makes the most of each engine's potential. Designed to minimise power loss and maximise performance, the gearbox will always select the right gear for whatever is coming next, or you can choose to change gear yourself in manual mode. To help you drive more efficiently, select Eco mode and the V90 recalibrates the drivetrain for the lowest possible fuel consumption and emissions. The coast function disconnects the engine from the automatic transmission when you release the accelerator at speeds above 40mph so it isn't being used to slow the car.

The powertrain can also adapt to the mood you're in. Select Comfort, Eco, Dynamic or Individual mode with our drive mode control, and the powertrain, steering and optional active chassis adapt instantly to your preferences.

Whichever powertrain you choose for your Volvo, you will enjoy the benefits of responsive power and uncompromised efficiency – simply a great drive.





## POWER WITHOUT COMPROMISE.

With advanced powertrain technologies, such as electrification, we aim to provide you with an unrivalled driving experience. The high-performance T8 Twin Engine AWD with plug-in hybrid technology allows you to enjoy an involving drive as well as cutting CO<sub>2</sub> emissions.

The combination of a high-performance four-cylinder petrol engine and a powerful electric motor offers the power and performance of a much larger engine, but use much less fuel. The 303hp petrol engine drives the front wheels and the 87hp electric motor powers the rear, giving instantaneous acceleration and on-demand all-wheel drive.

With just the electric motor powering the car, you benefit from silent, emissions-free driving and an electric-only range ideally suited to daily commuting.

Four different drive modes offer precise control over the car's powertrain. Hybrid mode uses petrol and electric power for the best balance of power and efficiency while Pure uses the electric motor only for zero-emission driving. Power combines the full output of the petrol engine and the electric motor for the best performance,

while AWD switches to full-time all-wheel drive. Blend your favourite elements of each mode and create a mode that's tailored to your needs by selecting Individual.

Controlling this technology is intuitive and straightforward. A beautiful machined-alloy roller switch allows you to flick easily between modes. And if you've chosen our Active Four-C Chassis your car automatically selects the best settings to complement the drive mode, allowing you to enjoy the drive while your Volvo does the work.

Charging the battery is quick and easy. Drive the car and the battery charges itself, thanks to regenerative braking. If you need to top it up, plug it into the mains supply. Adding to your convenience, the Volvo On Call app shows battery and charge status. It also allows you to remotely schedule battery charging using a timer function.

The T8 Twin Engine AWD gives you the best of both worlds. Power without compromise.



Made from Orrefors® crystal glass, the gear selector in the T8 blends traditional Swedish materials with advanced design and technology.



The battery's location helps give your Volvo a low centre of gravity, so it is stable, sure-footed and comfortable while not affecting the car's load space.



Plug your T8 Twin Engine into our specially-designed wall box at home and charge it conveniently and safely. Fully charged, the battery will provide enough electric-only power to cover the average daily commute of many people.



**T8 Twin Engine AWD | Inscription**  
707 Crystal White pearl | 20" 10-Spoke  
Silver/Diamond Cut alloy wheels, 1030



## DRIVEN TO PERFECTION.

**We designed the V90** from the ground up for precision and comfort. That's why the sophisticated suspension gives you the best of both worlds. Accuracy and precision when you want it, backed up by comfort and technology to make every drive enjoyable.

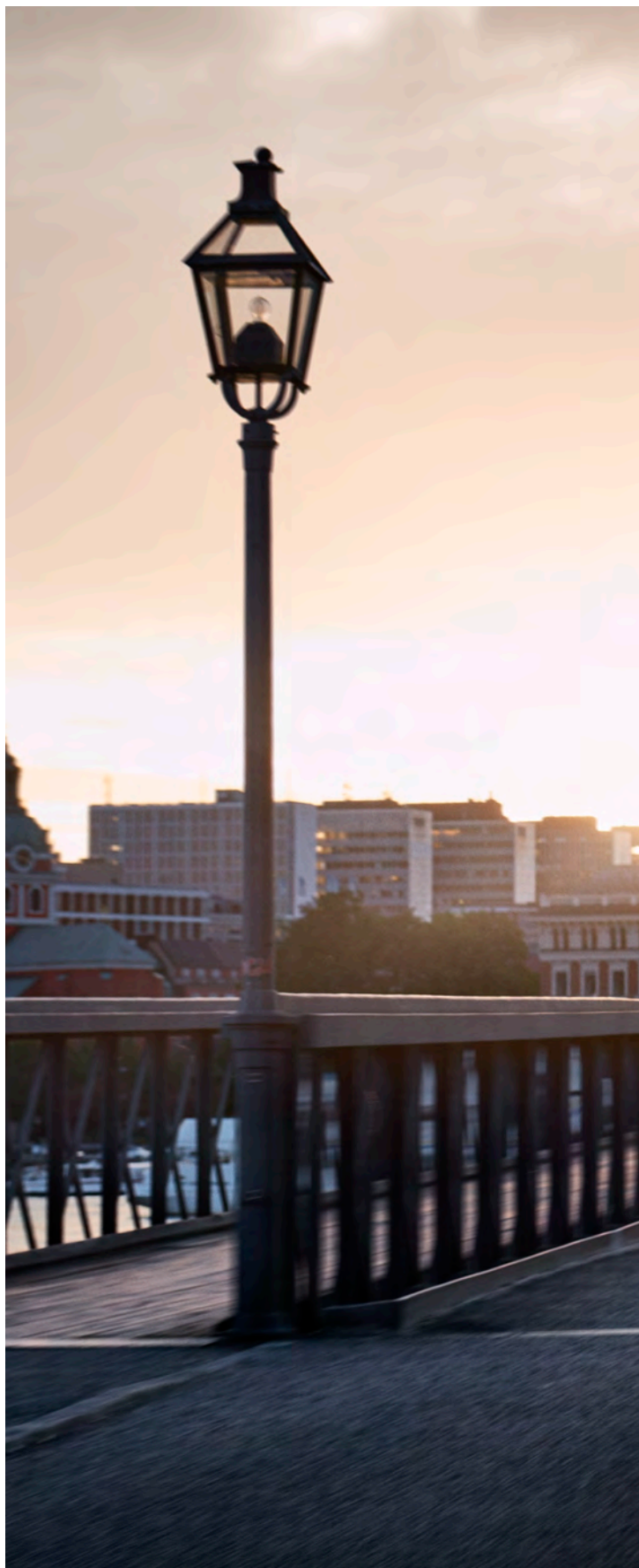
Double wishbone front suspension works in harmony with integral link rear suspension to give you precise control over the car. With our Active Four-C Chassis with rear air suspension, your V90 will compensate for loads while adapting the chassis to the road and driving conditions for an even better ride. Advanced driver aids such as stability control and understeer control logic keep the V90 stable, improving the way it handles corners. All-wheel drive models provide even greater reassurance on demanding roads.

You can choose between four drive modes that allow you to tailor the car's behaviour to your mood and find the perfect setting for the road you're on. Altering the engine, gearbox, accelerator and steering response changes the way the car behaves and, with the optional active chassis with rear air suspension, how it rides and handles. Gearshift paddles increase your control further.

And when you come to a stop, the V90 helps you to get going again. Hill Start Assist makes pulling away on an incline effortless by holding the car on the brake until you press the accelerator. Auto Hold keeps the brakes on after you've released the pedal, so you can let the car do all the work in stationary traffic.



Discover superior comfort and handling with our optional active chassis with rear air suspension. It soaks up poor road surfaces and keeps the ride height constant so the car responds how you want it to. Active chassis technology allows you to customise the way the V90 rides and handles.





## SIGN UP TO THE FUTURE.

**Welcome to the future.** Where a simple, convenient subscription will revolutionise your car experience. We call it Care By Volvo, a new way to experience Volvo cars, and part of our vision to give you back more time to do the things you love.

For one fixed monthly cost, with no down payment, you can have access to your own Volvo model. And we take care of everything else: insurance, tax, maintenance and servicing. It is convenient, transparent and hassle-free. And as the service is flexible, once you've subscribed, you can borrow other Volvo models for short periods of time\* – if you need a larger car, for instance.

Making use of our exclusive concierge services, which will vary depending on your location, will allow you to make better use of your time. And because you get to drive the latest Volvo models, you benefit from our progressive technologies and innovations.

Better still, because you don't own the car in the traditional sense, you don't take any of the responsibility. Your future proof yourself against unexpected costs.

This is the future of motoring. This is the luxury of simplicity. Available from Volvo Cars today.

\*Dependent on location





VOLVO V90

**Inscription**  
711 Bright Silver metallic |  
20" 8-Spoke Silver/Diamond Cut, 214



## YOUR JOURNEY BEGINS HERE.

We created the V90 with one single purpose: to provide you with a car that perfectly fits you and your lifestyle. A car that meets your expectations of a dynamic drive with refined comfort and sophisticated design – built with care for people and the world we share. A car that's intuitive to use and makes life less complicated, and is a pleasure to live with every day.

At the heart of your V90 is a dynamic, efficient powertrain. Whichever you choose, you will enjoy our latest Drive-E technology that gives you instant response and a smooth ride. Fuel consumption

and CO<sub>2</sub> emissions are kept low, and comply with exhaust emission legislation.

Our Drive-E powertrain range includes advanced diesel and petrol engines mated to our smooth eight-speed automatic gearbox available with responsive AWD all-wheel drive technology or front-wheel drive. And for the ultimate combination of performance and efficiency in your V90, there's the option of our T8 Twin Engine AWD powertrain with plug-in hybrid technology.

Make your choice, and enjoy the journey wherever it takes you.

### T8 Twin Engine AWD

Our T8 Twin Engine plug-in hybrid powertrain delivers an exhilarating drive with uncompromised efficiency. Combining a high-performance petrol engine and an electric motor, this 303hp+87hp/400Nm+240Nm powertrain allows outstanding highway performance and zero emission commuting – with all-wheel drive capability when needed.

### T5

The 250hp/350Nm T5 petrol powertrain is as responsive on the highway as in the city. This superb all-rounder delivers generous power just where you need it, ensuring excellent driveability in combination with our smooth 8-speed Geartronic™ automatic gearbox.

### T4

With the T4 190hp/300Nm petrol powertrain you can enjoy a smooth, responsive and highly efficient driving experience. Optimised turbocharging with full torque from low to medium revs and our smooth 8-speed automatic gearbox put you in control of your drive.

### D5 AWD

Our most powerful 235hp/480Nm diesel powertrain D5 AWD allows you to experience performance and refinement without compromises. Twin-turbo engine technology, our 8-speed automatic and all-wheel drive add to instant control.

### D4

Our sophisticated 190hp/400Nm D4 diesel powertrain allows you to enjoy more while using less. Available with our dynamic all-wheel drive and 8-speed automatic, the D4 is designed to give you the most efficient and confident driving experience.

VOLVO V90

**Inscription**  
711 Bright Silver metallic |  
20" 8-Spoke Silver/Diamond Cut, 214







**Volvo V90 Momentum**

Heighten the premium look and ambience of your Volvo estate.



**Volvo V90 Inscription**

The highly sophisticated expression of Swedish luxury.



**Volvo V90 R-Design**

The thrill of a spirited drive, characterised by style, responsiveness and control.



**Volvo V90 Cross Country**

The rugged yet sophisticated V90 Cross Country, built to enhance your every adventure.



**Volvo V90 Cross Country Volvo Ocean Race**

Inspired by one of the world's toughest yacht race, combining comfort and smart utility for a unique experience.

## CREATE THE VOLVO V90 OF YOUR CHOICE.

Our approach in everything we do is to always put people first. This also includes allowing you the freedom to create a Volvo that perfectly matches your style and personality.

To ensure you get your V90 exactly as you want it, we have created a wide range of options, trim levels and personal expressions. Even if your V90 is generously equipped already in the standard Momentum trim level, maybe you want to indulge your senses in the finest

Swedish luxury with Inscription. Or if you're in for a more sporty style inside and out – take a look at R-Design. And for true all-road capability that takes you and your adventures further, there's the rugged yet sophisticated V90 Cross Country or – for a new kind of smart luxury – the V90 Cross Country Volvo Ocean Race. Whatever you prefer, you can rest assured there's a Volvo V90 for you. Read on, and see what your V90 will look like.

## V90 MOMENTUM. THE RIGHT EQUIPMENT FOR YOUR DRIVE.

Choosing a Volvo V90 is easy. And now all you need to do is select the trim level that's right for you. Already our standard trim level Momentum will provide you with a high level of technology that will meet high demands on style, comfort and safety. For example, you can enjoy the control provided by our 12-inch driver display and Sensus Connect with enhanced connectivity – such as the intuitive operation of our 9-inch centre display with touch screen and voice control – and the clear sound reproduction of our High Performance audio system. Our electronically-controlled dual-zone climate system ensures you and your passengers can enjoy a comfortable cabin climate in all temperatures – the driver and front seat passenger can adjust the temperature to suit individual preferences. And of course: you get our world-leading IntelliSafe

technologies including the award-winning City Safety collision avoidance technology, Lane Keeping Aid, Road Sign Information, Run-off road Mitigation, Oncoming Lane Mitigation and our semi-autonomous driving technologies such as Adaptive Cruise Control and Pilot Assist as standard.

Our signature headlights with LED illumination together with larger 17-inch or 18-inch wheels will add to the exclusiveness and road presence of your V90. On the inside, aluminium tread plates welcome you every time you enter the cabin of your Volvo.

The stylish Leather upholstery and Iron Ore aluminium decor inlays further complement the interior ambience lumbar support for the front seats including vertical adjustment makes it easy to optimise the support to your needs.

### MOMENTUM

Includes:

#### Exterior:

17" or 18" alloy wheels (depending of your choice of powertrain) | Aluminium roof rails | LED headlights with automatic lever adjuster | Visible end pipes in chrome | Front grille high gloss black with chrome frame | Park assist, front and rear | Retractable rear-view mirrors | Bright decor side windows

#### Interior:

Automatically dimmed inner and outer rear-view mirrors | 2-way power adjustable lumbar support, front seats | Net pocket on tunnel | Comfort seats with Leather upholstery | Iron Ore Aluminium decor inlays | Aluminium tread plates, front and rear | Manual load cover | Textile floor mats | CleanZone

#### Sensus:

12.3" driver display | 9" centre display | High Performance audio system | Sensus Connect | Remote control buttons in steering wheel | Volvo On Call

#### IntelliSafe:

City Safety | IntelliSafe Assist (including Adaptive Cruise Control and Pilot Assist) | Lane Keeping Aid | Lane Departure Warning | Driver Alert Control | Road Sign Information | Speed limiter | Run-off road Mitigation | Oncoming Lane Mitigation

### MOMENTUM PRO

Includes Momentum equipment level plus the following:

Heated Washer Nozzles | Headlight Cleaning System | Heated Steering Wheel | Head-up Display | Active Bending LED Headlights | Front Foglights | Power Driver Seat | Front Seat Cushion Extensions | 18" Alloy Wheels

**1.** V90 Momentum with 18-inch wheels. **2.** Signature LED illumination, the high gloss black grille, bright deco exterior details contribute to a both powerful and elegant appearance. **3.** Park Assist supports you when reversing and the chrome dual tailpipes give your V90 a more dynamic look. **4.** The standard 12.3-inch driver display allows you to choose between different visual appearances. To provide optimum visibility, the display's brightness automatically adapts to exterior light conditions. **5.** The integrated bright aluminium roof rails add an extra touch of exclusivity to your V90 Momentum. **6.** Sensus Connect includes the large 9-inch centre display with touch screen, voice control, USB input, internet maps and our 330W High Performance audio system with 10 excellent speakers and Bluetooth® audio streaming. **7.** The smartly positioned coat hangers right behind the front seats make it easy to hang a garment without obscuring vision through the rear windows.



1-2



3



4



5



6



7



**18"** 5-Double Spoke,  
Silver, 149



**18"** 10-Spoke,  
Turbine Silver Bright, 154  
(Standard T4)

Providing a wide range of exterior colours and wheels, the Volvo V90 allows you to create a Volvo that's really you. Going for Momentum, elegant 17-inch seven-spoke wheels in Silver finish come standard, with the option of larger 18-inch wheels, depending on the engine.

The exterior colour you choose has a dramatic impact on the personality of your V90. Available in different variations, each colour imbues your Volvo with a sense of luxury and presence.



**17"** 7-Spoke, Silver, 152,  
(Standard D4)



**614**  
Ice White



**707**  
Crystal White pearl



**711**  
Bright Silver metallic



**477**  
Electric Silver metallic



**721**  
Mussel Blue metallic



**723**  
Denim Blue metallic



**467**  
Magic Blue metallic



**714**  
Osmium Grey metallic



**492**  
Savile Grey metallic



**724**  
Pine Grey metallic



**717**  
Onyx Black metallic



**019**  
Black Stone



**722**  
Maple Brown metallic



**719**  
Luminous Sand metallic

The interior of the V90 is created with you in the centre of attention. Every detail, every line, every shape is testimony to our designers' pursuit to create a space in which you feel relaxed and in complete control. The Momentum trim level includes Leather upholstery available in several different interior colour combinations to suit

your personal preferences. The interior ambience is further enhanced by Iron Ore aluminium decor inlays and aluminium tread plates. Or for an exclusive look inspired by contemporary Scandinavian furniture – opt for our genuine wood decor inlays.



**UPHOLSTERIES Leather Comfort seat (Standard)** 1. Charcoal in Charcoal interior, RA00 2. Maroon Brown in Charcoal interior, RA30 3. Amber in Charcoal interior, RA20 4. Blond in Blond/Charcoal interior and Charcoal base carpets and mats, UA00 **Fine Nappa Leather, Comfort seat (Optional)** 5. Charcoal in Charcoal interior, RB00 6. Maroon Brown in Charcoal interior, RB30 7. Amber in Charcoal interior, RB20 8. Blond in Blond/Charcoal interior and Charcoal base carpets and mats, UB00

**INLAYS** 9. Iron Ore Aluminium (Standard Momentum) 10. Dark Flame Birch (Optional)



1



2



3



4



5



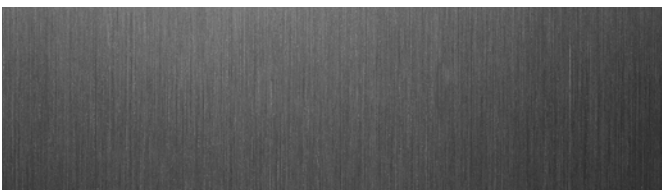
6



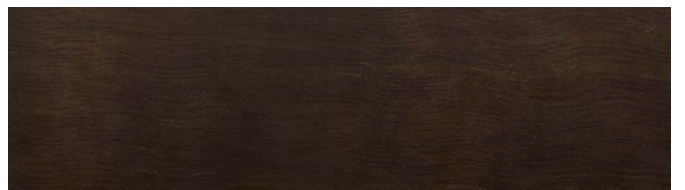
7



8



9



10

## Inscription

### A HIGHER GRADE OF LUXURY.

We created the exclusive V90 Inscription to meet your highest expectations on Swedish luxury. It's a highly personal expression that evokes a strong sense of elegant refinement. Each detail is carefully selected to give you and your passengers a sophisticated and invigorating experience. Distinguished exterior design cues enhance the luxurious look and feel of the V90, while the

meticulously crafted interior gives you ample room for a relaxed driving experience. The V90 Inscription epitomises our proud heritage of human-centric design. And when it comes to intelligent luxury imbued with distinctive style and fresh thinking, the V90 Inscription is in a class of its own – just like you.

## V90 INSCRIPTION

Includes V90 Momentum trim level plus the following:

### Exterior:

18" Alloy wheels | Bright deco exterior with embossed Inscription side moulding | Dual integrated tailpipes | Foglights in front spoiler

### Interior:

Comfort seats with Fine Nappa Leather upholstery | Inscription mats, front and rear | Illuminated metal tread plates | Interior high level illumination | Leather key remote | Linear Walnut decor inlays | Power driver seat with memory function for seat and side mirrors | Power passenger seat | Keyless Drive | Tailored Instrument Panel | Integrated Sun Curtains | Front Seat Cushion Extensions

## INSCRIPTION PRO

Includes Inscription equipment level plus the following:

Heated Washer Nozzles | Headlight Cleaning System | Heated Steering Wheel | Head-up Display | Active Bending LED Headlights | Perforated and Ventilated Nappa Upholstery | Front Seat Massage | Power Side Support | 20" Alloy Wheels (n/a T8 Twin Engine)



**Inscription**

711 Bright Silver metallic |  
20" 8-Spoke Silver/Diamond Cut, 214





1



2

The highly sophisticated V90 Inscription expresses the essence of contemporary luxury. Instantly recognisable thanks to its distinctive chrome-finish grille and lower door bright deco moulding, this expression sets the V90 apart thanks to a number of well-judged exterior design cues that correspond with the car's timeless Scandinavian design. Just like beautifully crafted pieces of jewellery design, the ten-spoke Silver/Diamond Cut wheels harmonise perfectly with the metal finish of the bright deco body inlays and the integrated roof rails. Together with the elegant dual integrated tailpipes, the wheels also contribute to the car's confident stance. Our signature LED illumination contributes to both a strong visual identity and excellent vision in the dark. And for an even better and uninterrupted light pattern, you can opt for our advanced Full-LED Active Bending Light technology.

Every time you open the door, the Inscription tread plates provide an illuminated welcome. The luxurious theme continues with authentic, finely crafted materials that create a lounge-like atmosphere of sumptuous well-being. You and your passengers can lean back in sculpted power-operated Comfort seats with Fine Nappa Leather upholstery. Decor inlays in exclusive Linear Walnut,

Inscription textile mats and our most advanced ambience interior illumination add to the rewarding Inscription experience. And for you as driver, the large 12-inch driver display and convenient drive mode settings in the console between the front seats add to your feeling of being in command. And to enhance your driving experience, our optional Active chassis with rear air suspension optimises comfort and handling – select between three different chassis settings with the drive mode control.

For an even higher level of comfort you can complement the front seats with ventilation and massage functions. The optional four-zone climate control allows both the driver and the front seat passenger as well as the outer rear seat passengers to set their individual cabin temperature. Adding a panoramic glass roof, everyone inside your V90 will enjoy a superb experience of air and light – the front section can be opened at a push of button and during sunny days a power operated sunshade in perforated textile will reduce the heat and glare while maintaining the airy feel inside the cabin. And turning your V90 into a concert hall, our optional high-end audio system Bowers & Wilkins brings exceptional clarity and realism to your music, wherever you're seated.

1. Small details make Inscription, such as the high gloss chrome frames around the door handles. 2. Inscription front grille in elegant chrome finish and the signature headlights with LED illumination. 3. The power-operated Comfort seats with Fine Nappa Leather upholstery and the exclusive Linear Walnut genuine wood decor inlays add to the sensory experience of contemporary luxury. 4. The lower door bright deco moulding with Inscription logotype. 5. The intuitive 12-inch driver display with four graphic modes and the 9-inch centre display with touch screen puts you in the centre of action. 6. Dual integrated tailpipes and bright deco trim add to an elegant and powerful impression. 7. Drive mode scroll wheel in diamond patterned metal finish and the Linear Walnut decor inlay. 8. The exclusive Inscription leather-clad remote key fob is in the same colour as the Fine Nappa Leather upholstery in your V90 Inscription – an excellent example of thoughtful Scandinavian craftsmanship and clean design.



3



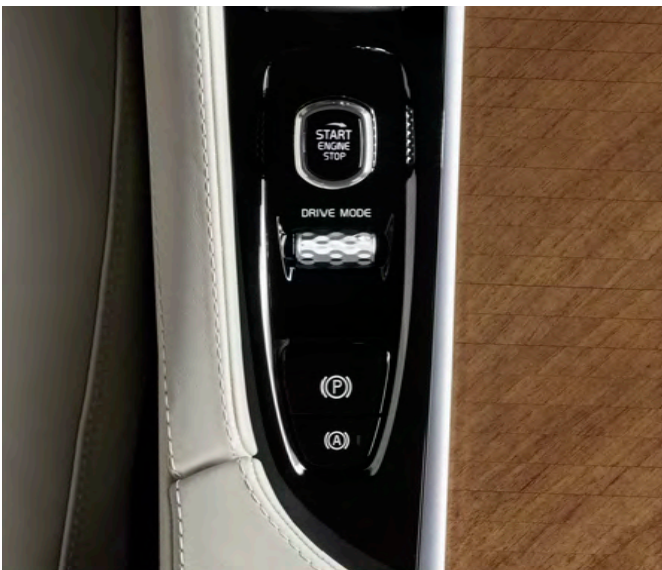
4



5



6



7



8



**21"** 10-Open Spoke Turbine  
Tinted Silver Diamond Cut  
(Optional)



**20"** 10-Spoke,  
Silver Diamond Cut, 1030  
(T8 Twin Engine)



**20"** 8-Spoke,  
Silver/Diamond Cut, 214  
(Optional)

The V90 Inscription exterior with its subtle jewellery touches is a timeless expression of classical Scandinavian design. The exterior colour palette allows you to create the V90 Inscription that best reflects your style and preferences. Available in distinctive diamond

cut design, the 18-, 19-, 20- or 21-inch wheels connect visually with the exterior design cues to create a harmonic impression of contemporary elegance.



**19"** 5-Triple Spoke,  
Matt Tech Black Diamond Cut, 498  
(Optional)



**18"** 10-Spoke,  
Silver/Diamond Cut  
(Standard)



**614**  
Ice White



**707**  
Crystal White pearl



**711**  
Bright Silver metallic



**477**  
Electric Silver metallic



**721**  
Mussel Blue metallic



**723**  
Denim Blue metallic



**467**  
Magic Blue metallic



**714**  
Osmium Grey metallic



**492**  
Savile Grey metallic



**724**  
Pine Grey metallic



**717**  
Onyx Black metallic



**019**  
Black Stone



**722**  
Maple Brown metallic



**719**  
Luminous Sand metallic

Comfort seat



1



4



7

Inside the V90 Inscription, you are surrounded by thoughtful luxury. There are genuine materials and fine craftsmanship wherever you look – a sensory experience further enhanced by the ergonomically designed Comfort seats in Fine Nappa leather with front seat cushion extensions. Adding to your wellbeing, the Comfort seats are available with ventilation and a massage function. Linear Walnut decor inlays in genuine wood and the Tailored dashboard add to the exclusive look and feel. And to make it easy to give the interior your own signature, you have an extensive range of interior colour, upholstery and decor inlay combinations to choose from.

**UPHOLSTERIES Fine Nappa Leather, Comfort seat (Standard)** 1. Charcoal in Charcoal interior, RB00 2. Maroon Brown in Charcoal interior, RB30 3. Amber in Charcoal interior, RB20 4. Blond in Blond/Charcoal interior and Charcoal base carpets and mats, UB00 **Fine Nappa Leather Perforated, Comfort seat ventilated (Optional)** 5. Charcoal in Charcoal interior, RC00 6. Maroon Brown in Charcoal interior, RC30 7. Amber in Charcoal interior, RC20 8. Blond in Blond/Charcoal interior and Charcoal base carpets and mats, UC00



2



3



5



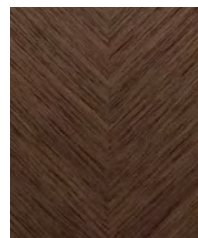
6



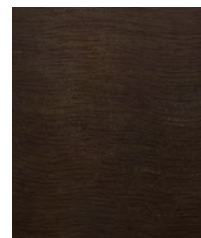
8



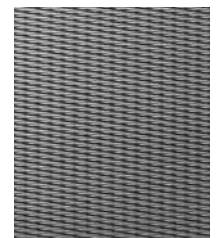
9



10



11



12

**REMOTE KEY FOBS** 9. Charcoal Leather, Blond Leather, Amber Leather, Maroon Brown Leather, White Leather (Accessory), Dark Flame Birch (Accessory) and Linear Walnut (Accessory)  
**INLAYS** 10. Linear Walnut (Standard) 11. Dark Flame Birch (Optional) 12. Metal Mesh Aluminium (Optional)

## RDESIGN

### INSPIRED BY THE ART OF DRIVING.

If you love to drive, the V90 R-Design is for you. With a unique personality, R-Design captures the thrill of a spirited driving experience characterised by style, responsiveness and control. A wealth of distinguished design details raises the dynamic soul of your Volvo and gives it a sportier, more distinct road presence. It's an expression that catches the eye from every angle and hints at the promise of an amazing drive, every time. And you can rest assured that the V90 R-Design will deliver. Surrounded by

meticulously crafted and expressive interior design details, you can feel it right from the moment you take your position in the sculpted R-Design driver seat. Everything – from the R-Design steering wheel with gearshift paddles to the Charcoal headliner – is there to inspire and support your driving. And for an even more energetic, road-hugging drive, the V90 R-Design benefits from an advanced sport chassis.

### V90 R-DESIGN

Includes V90 Momentum trim level plus the following:

**Exterior:**

18" 5-spoke Matt Black Diamond Cut alloy wheel | Door mirror caps in matt silver finish | Dual integrated end pipes | Lower front, unique sporty design | Grille with unique mesh in glossy black and frame in silk metal finish | LED foglights in front spoiler | Lower outer grilles, unique design and glossy black | Side window trim in silk metal finish | Body-coloured rear lower insert | Sport chassis

**Interior:**

Charcoal interior and upholstery with light contrast stitching | Contour seats with R-Design logotype | Fine Nappa Leather/Nubuck textile upholstery | Charcoal headlining | Interior high level illumination | Metal Mesh Aluminium decor panels | Manual cushion extension, driver and passenger seat | Front and rear illuminated tread plates with R-Design logo type in the front ones | Gearshifter knob in perforated Fine Nappa Leather and light contrast stitching | Gaiter with light contrast stitching | Remote control clad in Perforated Fine Nappa Leather | Textile mats with light contrast stitching | Sport pedals in aluminium with rubber inserts | Sport steering wheel with light contrast stitching and R-Design symbol

### R-DESIGN PRO

Includes R-Design equipment level plus the following:

Heated Washer Nozzles | Headlight Cleaning System | Heated Steering Wheel | Head-up Display | Active Bending LED Headlights | Front Foglights | Power Driver Seat | Tinted Windows | 20" Alloy Wheels (n/a T8 Twin Engine)



**R-Design**

720 Bursting Blue metallic | 21" 5-Double Spoke  
Matt Black/Diamond Cut alloy wheels





1



2

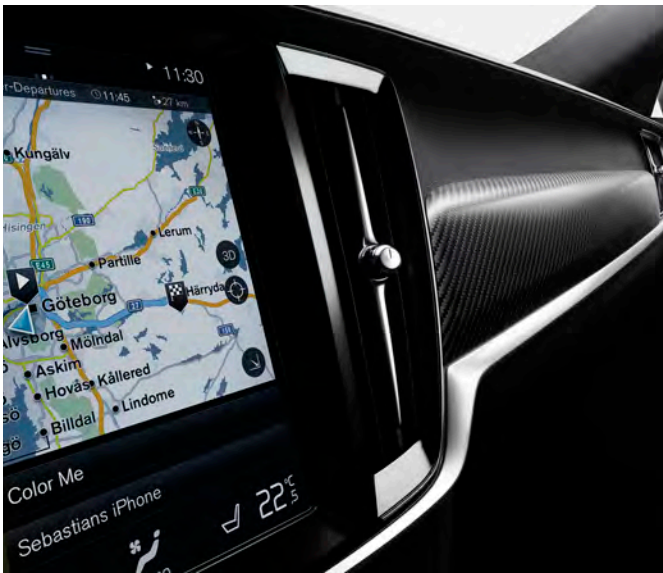
R-Design is Volvo in smart designer sports gear – it's all about a performance-inspired look and feel, both inside and out. It's a truly eye-catching expression with sporty exterior design cues, such as its own distinctive grille in high gloss black with Silk Metal frame, front spoiler, stylish Silk Metal window trim, Bright Silver matt finish door mirror caps, prominent dual end pipes and striking R-Design aluminium wheels. Our signature headlights with LED illumination provide excellent vision and a distinctive attitude on the road. And for an even better uninterrupted vision in the dark, there's the option of the Full-LED Active Bending Lights.

On the inside, the illuminated R-Design tread plates in Silk Metal finish greet you onboard. The refined sporty theme continues with Metal Mesh decor inlays, Charcoal headlining, our exclusive Tailored dashboard and semi-powered R-Design Contour seats with a unique Nubuck Textile/Fine Nappa Leather or optional Fine Nappa Leather upholstery. Together, these features give the cabin a technical, cockpit-like feel. R-Design logotypes in the head rests, distinctive stitching in the seats and the gear shifter and the steering wheel in perforated leather all reinforce the sporty yet elegant

ambience. The adjustable front seat cushion extensions further enhance your thigh support for improved comfort during long drives. And when it's dark, our most advanced interior illumination enhances the exclusive ambience inside your V90 R-Design. Further adding to your sense of being in control, the R-Design also provides you with our largest 12-inch driver display and steering-wheel mounted gearshift paddles that enhance your control by allowing quicker manual shifts. Conveniently positioned in the tunnel console between the front seats, there's also a drive mode control that allows you to shift between four driving characteristics – Comfort mode, Dynamic mode, Eco mode and Individual mode.

Behind the R-Design steering wheel in Perforated Fine Nappa Leather, you can enjoy the dynamic response and feedback from quicker steering and a finely tuned sport chassis. Lower and firmer, this chassis features adjusted anti-roll bars and stiffer springs for a more responsive handling and less roll when cornering. The monotube design rear dampers respond more quickly for improved body control in all conditions, resulting in a sporty road-hugging drive without you having to compromise ride comfort.

1. The R-Design steering wheel in Perforated Fine Nappa Leather with gearshift paddles and the 12-inch driver display with four graphic modes. 2. The 21-inch Matt Black/Diamond Cut aluminium wheels for the ultimate R-Design experience (optional). 3. The Carbon Fibre decor inlays add to the dynamic, hi-tech ambience inside your V90 R-Design (optional). 4. R-Design door mirror caps in contrasting silver look. 5. The R-Design interior featuring the R-Design steering wheel, gear shifter and gaiter in Perforated Fine Nappa Leather with contrasting stitching, Contour seats with exclusive Fine Nappa Leather upholstery (optional), Carbon Fibre decor inlays (optional) and Tailored dashboard and upper door panels with light Amber stitching (optional). 6. Dual integrated end pipes for a distinctive road presence. 7. The glossy black R-Design grill with frame in Silk Metal finish and unique glossy black lower outer grilles add to the dynamic character of your V90 R-Design.



3



4



5



6



7



**21"** 5-Spoke Fan  
Silver Bright  
(Optional)



**21"** 5-Double Spoke  
Matt Black Diamond Cut, 147  
(Optional)



**20"** 5-Double Spoke  
Matt Black Diamond Cut, 246  
(Optional)

The exterior leaves no doubt about the intention of your V90 R-Design. The exterior colours are carefully selected to match the car's dynamic character, each with its unique expression – especially Passion Red and Bursting Blue metallic, exclusively created for R-Design. Passion Red is the iconic sporty colour, while Bursting Blue metallic adds a

techy, sporty look that perfectly highlights the body inserts in high-gloss black and silk metal finish. The powerful 18-inch, 19-inch, 20-inch or 21-inch R-Design alloy wheels in expressive design enhances the car's dynamic yet sophisticated look, putting your Volvo in a class of its own.



**19"** 5-Spoke  
Matt Black Diamond Cut, 158  
(Optional)



**18"** 5-Spoke  
Matt Black/Diamond Cut  
(Standard)



**614**  
Ice White



**707**  
Crystal White pearl



**711**  
Bright Silver metallic



**477**  
Electric Silver metallic



**720**  
Bursting Blue metallic



**714**  
Osmium Grey metallic



**492**  
Savile Grey metallic



**717**  
Onyx Black metallic



**612**  
Passion Red

Inside your V90 R-Design, you can enjoy a dynamic and driver-focused interior made of high-class materials. The sculpted R-Design Contour seats with adjustable seat cushion extensions will provide relaxed support through any twists that the road has in store, while the exclusive Nubuck Textile/Fine Nappa leather or Fine Nappa

Leather upholstery with contrasting stitching provides a sporty yet sophisticated feel. A sensation further enhanced the Tailored dashboard and the decor inlays in Metal Mesh or Carbon Fibre that perfectly complement the Charcoal interior.



Contour seat

---

**UPHOLSTERIES** Sports fabric/**Fine Nappa Leather, Contour seat** 1. Charcoal in Charcoal interior, RB0R **Fine Nappa Leather, Contour seat** 2. Charcoal in Charcoal interior, RC0R  
**REMOTE CONTROL SHELL** 3. Available in Charcoal Perforated Leather  
**INLAYS** 4. Metal Mesh Aluminium (Standard) 5. Carbon Fibre (Optional)



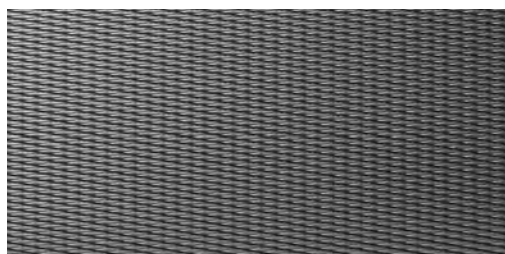
1



2



3



4



5





## VOLVO V90 CROSS COUNTRY. YOUR SOPHISTICATED ADVENTURE AWAITS.

A capable all-road car, the V90 Cross Country is built to enhance your every adventure. Clean, taut lines and rugged Cross Country details create a powerful look that conveys a strong sense of capability – with all the practicality and versatility of the Volvo estate built in.

The V90 Cross Country is packed with innovative technology for sophisticated travelling on all roads. All-wheel drive, increased ground clearance and an advanced chassis help you cope with rough roads, challenging weather and tough conditions.

No matter what's going on outside, the V90 Cross Country is a sanctuary inside. The spacious, light-filled cabin is made from the finest materials and constructed with the care and attention provided by Swedish craftsmanship.

Designed to make every journey an adventure, the V90 Cross Country is a place where you can relax in comfort, where technology enhances your drive and opens up a world of destinations.

To ensure you get your V90 Cross Country exactly as you want it, you have two equipment levels to choose from: the well-equipped Cross Country and the luxurious Cross Country Pro – created to meet your highest expectations on Scandinavian refinement. And if you want to take your adventure to the next level, there's the unique V90 Cross Country Volvo Ocean Race, inspired by the world's toughest yacht race.

**Visible strength.** Combining the elegance of our new design language with Cross Country ruggedness has created a car that's sophisticated, tough and practical.

Its large wheels and increased ground clearance give you confidence on any road. The front and rear skid plates blend

seamlessly into the bumper for an elegant and rugged look, and the cladding helps to protect the bodywork. Bold lines, the raked rear window and the tall LED tail lights, with their slender vertical shape, are both contemporary and classically Volvo.



**Cross Country**

714 Osmium Grey metallic | 20" 10-Spoke  
Black/Diamond Cut alloy wheels, 226



## ALL-ROAD CAPABILITY OPENS UP YOUR WORLD.

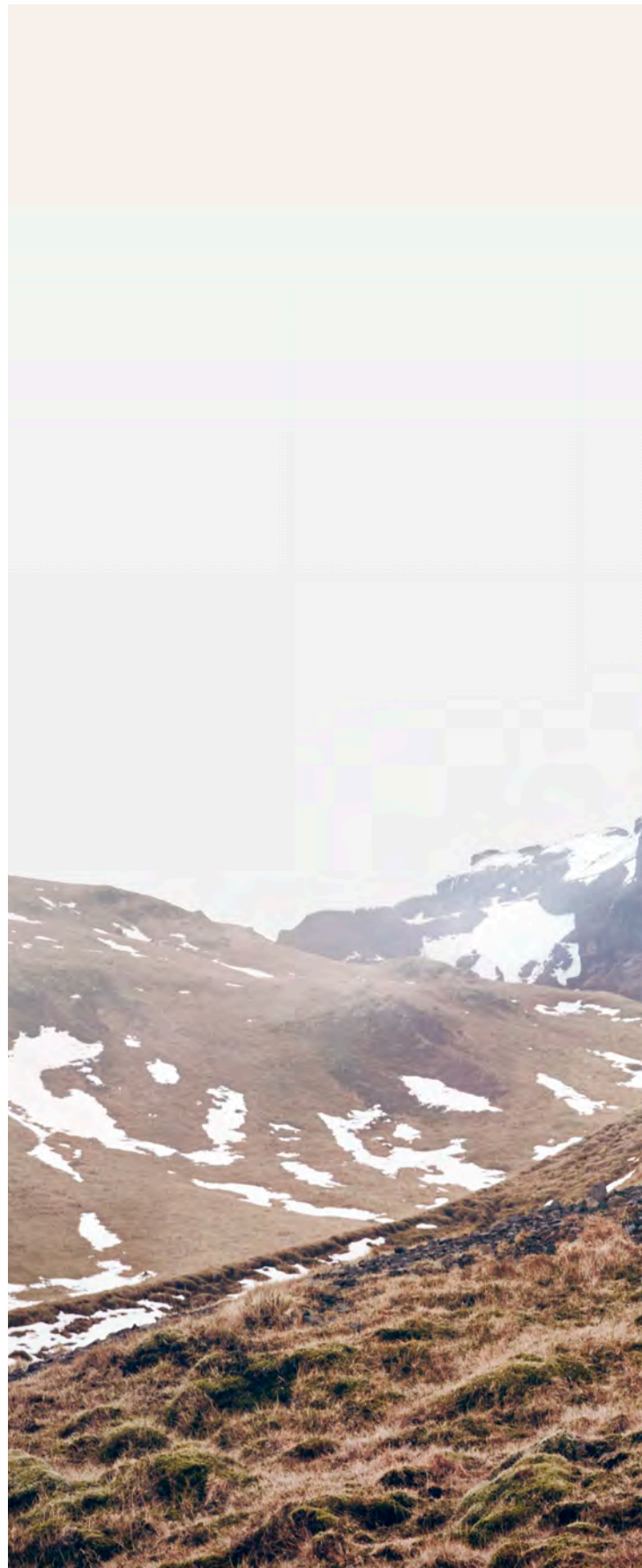
The **V90 Cross Country** is a true all-road vehicle, with the technology to take you further. So the limits of your adventure don't have to be defined by the limits of your car.

Our sophisticated fifth-generation all-wheel-drive system keeps the V90 Cross Country moving when roads get rough or conditions deteriorate. It automatically sends the right amount of power to the wheels that need it the most, so when the road runs out you can keep going. With its increased ground clearance and large wheels, this car has the capability to take you wherever you want to go. Descending steep hills is made straightforward with Hill Descent Control, which carefully applies the brakes to keep the car from moving too quickly or sliding.

You can tailor the way the V90 Cross Country behaves off road by selecting Off-road mode from the Drive Mode menu. It makes the car easier to drive on difficult surfaces such as wet grass, mud and loose gravel by changing the way the engine delivers its power and recalibrating the car's drivetrain so you have more control at slower speeds. On uneven ground, the Active Four-C chassis with rear air suspension comes into its own, taking bumps and ruts in its stride. When the road becomes a challenge and the weather becomes unpredictable, the V90 Cross Country gets you where you want to go. In comfort.



Discover superior comfort and handling with optional rear air suspension. It soaks up poor road surfaces and keeps the ride height constant so the car responds how you want it to. Active chassis technology allows you to customise the way the V90 Cross Country rides and handles.





## VOLVO V90 CROSS COUNTRY. THE RIGHT EQUIPMENT FOR YOUR DRIVE.

Choosing a Volvo V90 Cross Country is easy. And now all you need to do is select the equipment level that's right for you and your adventures. Already our standard equipment level Cross Country will provide you with a high level of technology that will meet high demands on style, comfort and safety. For example, you can enjoy the control provided by our 12-inch driver display and Sensus Connect with enhanced connectivity – such as the intuitive operation of our 9-inch centre display with touch screen and voice control – and the clear sound reproduction of our High Performance audio system including Bluetooth® music streaming. Volvo On Call connects with your car with your smartphone and gives you access to a wide range of smart services. Our electronically-controlled two-zone climate system ensures you and your passengers can enjoy a comfortable cabin climate in all temperatures – the driver and front seat passenger can adjust the temperature to suit individual preferences. And of course: you get our world-leading IntelliSafe technologies including the award-winning City Safety collision avoidance technology,

Lane Keeping Aid, Road Sign Information, Run-off road Mitigation, Oncoming Lane Mitigation and IntelliSafe Assist with semi-autonomous driving technologies such as Adaptive Cruise Control and Pilot Assist as standard.

Our signature design LED headlights contribute to both a strong visual identity and excellent vision in the dark without dazzling others. And together with the high gloss black deco exterior design elements, the bright finish integrated roof rails and the optional larger 19- or 20-inch wheels, they will add to the exclusiveness and road presence of your V90 Cross Country.

On the inside, metal tread plates welcome you every time you enter the cabin of your Volvo. The stylish Leather upholstery with unique Cross Country stitching and genuine Black Walnut decor inlays further complement the interior ambience.

And when it's dark, the interior illumination enhances the luxurious feeling inside your V90 Cross Country.

### V90 CROSS COUNTRY

Includes:

#### Exterior:

18" alloy wheels | Cross Country mesh grill | Charcoal lower grill | Cross Country lower outer front grilles | Charcoal wheel arch extensions | Charcoal sills and bumpers lower section | Charcoal sill mouldings | Charcoal lower side moulding | Colour-coordinated door mirrors | Bright integrated roof rails | Cross Country rear bumper | Dual integrated tail pipes | Hill Start Assist | Hill Descent Control | High gloss black decor, side windows | LED headlights with automatic lever adjuster | Power retractable door mirrors

#### Interior:

Comfort seats with Leather upholstery | 2-way power adjustable lumbar support | Leather-clad steering wheel | Leather-clad gear lever knob | Black Walnut decor inlays | Two-zone Electronic Climate Control | CleanZone | Keyless start | Net pocket on tunnel | Cargo opening scuff plate in stainless steel | Metal door tread plates, front and rear | Textile floor mats

#### Sensus:

12.3" driver display | 9" centre display | High Performance audio system | Sensus Connect | Remote control buttons in steering wheel

#### IntelliSafe:

City Safety | Adaptive Cruise Control | Pilot Assist | Lane Keeping Aid | Driver Alert Control | Road Sign Information | Speed limiter | Run-off road Mitigation | Oncoming Lane Mitigation

**1-2.** Signature design LED illumination headlights, high gloss black exterior details and bright aluminium roof rails contribute to the both powerful and elegant appearance of the V90 Cross Country Plus. **3.** The 12.3 DIM-inch driver display for Cross Country allows you to choose between different visual appearances. To provide optimum visibility, the display's brightness automatically adapts to exterior light conditions. **4.** The integrated bright aluminium roof rails add an extra touch of exclusivity to your V90 Cross Country. **5.** Sensus Connect includes the large 9-inch centre display with touch screen, voice control, USB inputs, internet maps and our 330W High Performance audio system with 10 excellent speakers and Bluetooth® audio streaming. **6.** Unique decor inlays in genuine Black Walnut add to the exclusive ambience inside your V90 Cross Country.



1



2



3



4



5



6

## VOLVO V90 CROSS COUNTRY PRO. A HIGHER GRADE OF REFINEMENT.

The V90 Cross Country Pro means refined luxury, featuring all the technology, comfort and versatility you need for sophisticated adventures. The distinct 19-inch six-double spoke Tech Matt Black Diamond Cut wheels harmonise perfectly with the high gloss black exterior details and the integrated bright roof rails. Together with the elegant dual integrated end pipes, the wheels also contribute to the car's confident stance.

Every time you open the door, the metal tread plates provide an illuminated welcome. The luxurious theme continues with authentic, finely crafted materials that create a lounge-like atmosphere of sumptuous well-being. You and your passengers can lean back in sculpted power-operated Comfort seats with Leather upholstery. Unique Black Walnut genuine wooden decor inlays, textile floor mats and our most advanced ambience interior illumination add to the rewarding Cross Country Pro experience.

For you as driver, the large intuitive 12-inch driver display with four graphic modes and convenient drive mode and steering settings in the console between the front seats add to your feeling of being

in command. And to enhance your driving experience, our optional Active Four-C Chassis with rear air suspension optimises comfort and handling – select between four different chassis settings with the drive mode control.

For an even higher level of comfort you can complement the front seats with ventilation and massage functions. The optional four-zone climate control allows both the driver and the front seat passenger as well as the outer rear seat passengers to set their individual cabin temperature. And adding a panoramic roof, everyone inside your V90 Cross Country Pro will enjoy a superb experience of air and light – the front section can be opened at a push of button and during sunny days a power operated sunshade in perforated textile will reduce the heat and glare while maintaining the airy feel inside the cabin. And turning your V90 Cross Country into a concert hall, our optional high-end audio system Bowers & Wilkins brings exceptional clarity and realism to your music, wherever you're seated.

### CROSS COUNTRY PRO

Includes Cross Country equipment level plus the following:

#### Exterior:

19" alloy wheels | Foglights in front spoiler | Active Bending LED Headlights | Headlight Cleaning System

#### Interior:

Power driver seat with memory function for seat and side mirrors | Illuminated metal tread plates | Interior high level illumination | Heated steering wheel | Head-up Display

**1.** V90 Cross Country Pro with optional 20-inch Black Diamond Cut alloy wheels. **2.** The power-operated Comfort seats with Leather upholstery together with unique Black Walnut genuine wood decor inlays add to the sensory experience of contemporary luxury. **3.** The intuitive 12-inch driver display with four graphic modes and the 9-inch centre display with touch screen put you in the centre of action. **4.** Select your preferred drive mode and steering characteristics with the scroll wheel in diamond patterned metal finish. **5.** Our optional Bowers & Wilkins audio system with 19 high-end speakers is created to deliver the most realistic immersive sound possible. **6.** The optional leather-clad remote control is in the same colour as the Leather upholstery in your V90 Cross Country Pro – an excellent example of thoughtful Scandinavian craftsmanship and clean design.





1



2/3



4



5



6



**21"** 7-Spoke  
Matt Tech Black Diamond Cut



**20"** 10-Spoke  
Black/Diamond Cut, 226



**20"** 5-Double Spoke  
Matt Black Diamond Cut, W007  
(Optional Pro)

The rugged yet elegant V90 Cross Country exterior is a timeless expression of classical Scandinavian design. The exterior colour palette allows you to create the V90 Cross Country that best reflects your style and preferences. The lower body parts and wheel arch extensions in contrasting Charcoal add to the rugged character, while some body colours are also available fully colour-coordinated

for enhanced elegance. And to top the experience, you have a range of large, specially-designed alloy wheels to choose from – exclusively for your V90 Cross Country and Cross Country Pro. Available in distinctive diamond cut design, the 19-, 20- and 21-inch wheels connect visually with the exterior design cues to create a harmonic impression of contemporary elegance.



**19"** 5-Double Spoke  
Black Diamond Cut, 224



**19"** 6-Double Spoke  
Matt Tech Black/Diamond Cut, 151



**18"** 5-double spoke  
Silver, 148  
(Standard)



**614**  
Ice White



**707**  
Crystal White metallic  
(also available with fully colour coordinated  
sills and bumpers)



**711**  
Bright Silver metallic



**477**  
Electric Silver metallic  
(also available with fully colour coordinated  
sills and bumpers)



**721**  
Mussel Blue metallic



**723**  
Denim Blue metallic



**467**  
Magic Blue metallic



**714**  
Osmium Grey metallic  
(also available with fully colour coordinated  
sills and bumpers)



**492**  
Savile Grey metallic



**724**  
Pine Grey metallic



**717**  
Onyx Black metallic  
(also available with fully colour coordinated  
sills and bumpers)



**019**  
Black Stone



**722**  
Maple Brown metallic  
(also available with fully colour coordinated  
sills and bumpers)



**719**  
Luminous Sand metallic  
(also available with fully colour coordinated  
sills and bumpers)

Inside the V90 Cross Country you can relax on the way to your adventure in a meticulously crafted interior with a superior finish and detailing wherever you look. For a sumptuous look and feel, the Cross Country comfort seats feature Leather upholstery with unique Cross Country stitching available in several different interior colour combinations to suit your personal preferences. The interior

ambience is further enhanced by decor inlays in unique Black Walnut and metal tread plates front and rear. Choosing Cross Country Pro, the sensory experience is further enhanced by the exclusive upholstery in Fine Nappa Leather or optional Perforated Fine Nappa Leather with ventilation.



Comfort seat

**UPHOLSTERIES** **Leather with CC-stitching, Comfort seat** 1. Charcoal in Charcoal interior, RA02 2. Amber in Charcoal interior, RA22 3. Blond in Blond/Charcoal interior and Charcoal base carpets and mats, UA02 **Leather Fine Nappa, Comfort seat** 4. Charcoal in Charcoal interior, RB00 5. Maroon Brown in Charcoal interior, RB30 6. Amber in Charcoal interior, RB20 7. Blond in Blond/Charcoal interior and Charcoal base carpets and mats, UB00 **Leather Fine Nappa Perforated, Comfort seat ventilated\*** 8. Charcoal in Charcoal interior, RC00 9. Maroon Brown in Charcoal interior, RC30 10. Amber in Charcoal interior, RC20 11. Blond in Blond/Charcoal interior and Charcoal base carpets and mats, UC00

**INLAYS** 12. Black Walnut (Standard) 13. Metal Mesh Aluminium



1



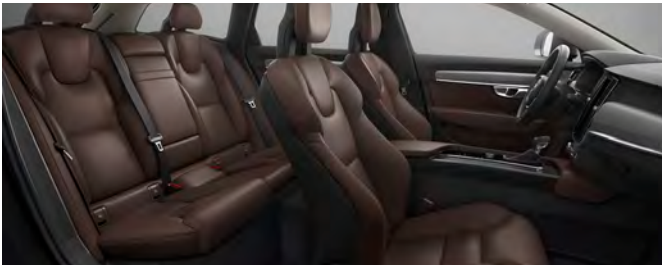
2



3



4



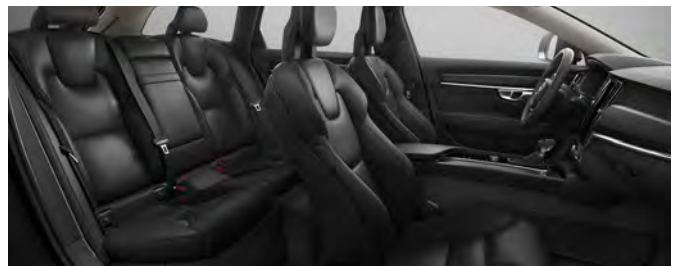
5



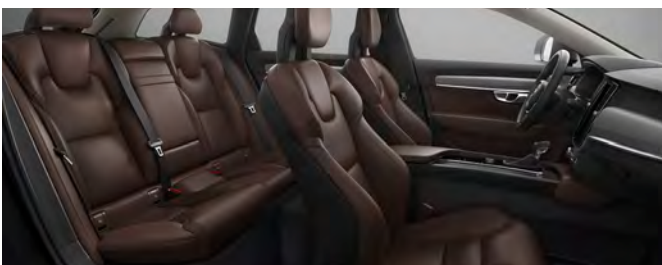
6



7



8



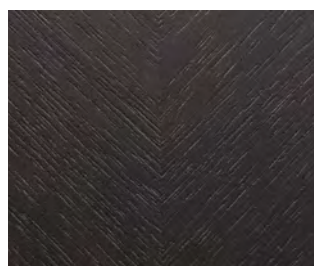
9



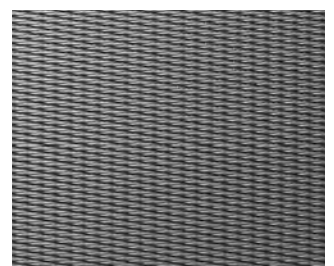
10



11



12



13

## V90 CROSS COUNTRY VOLVO OCEAN RACE. TAKE YOUR ADVENTURE TO THE NEXT LEVEL.

From one of the world's toughest yacht race comes the inspiration for a car that is the perfect companion to your adventure. The Volvo V90 Cross Country Volvo Ocean Race combines smart utility and comfort to create a unique kind of luxury – the freedom to explore.

With a combination of colour and trim you won't find anywhere else and practical extras such as load nets, a water-resistant storage bag and a washable load compartment floor, this is a car with the capability to match its looks.

### V90 CROSS COUNTRY VOLVO OCEAN RACE

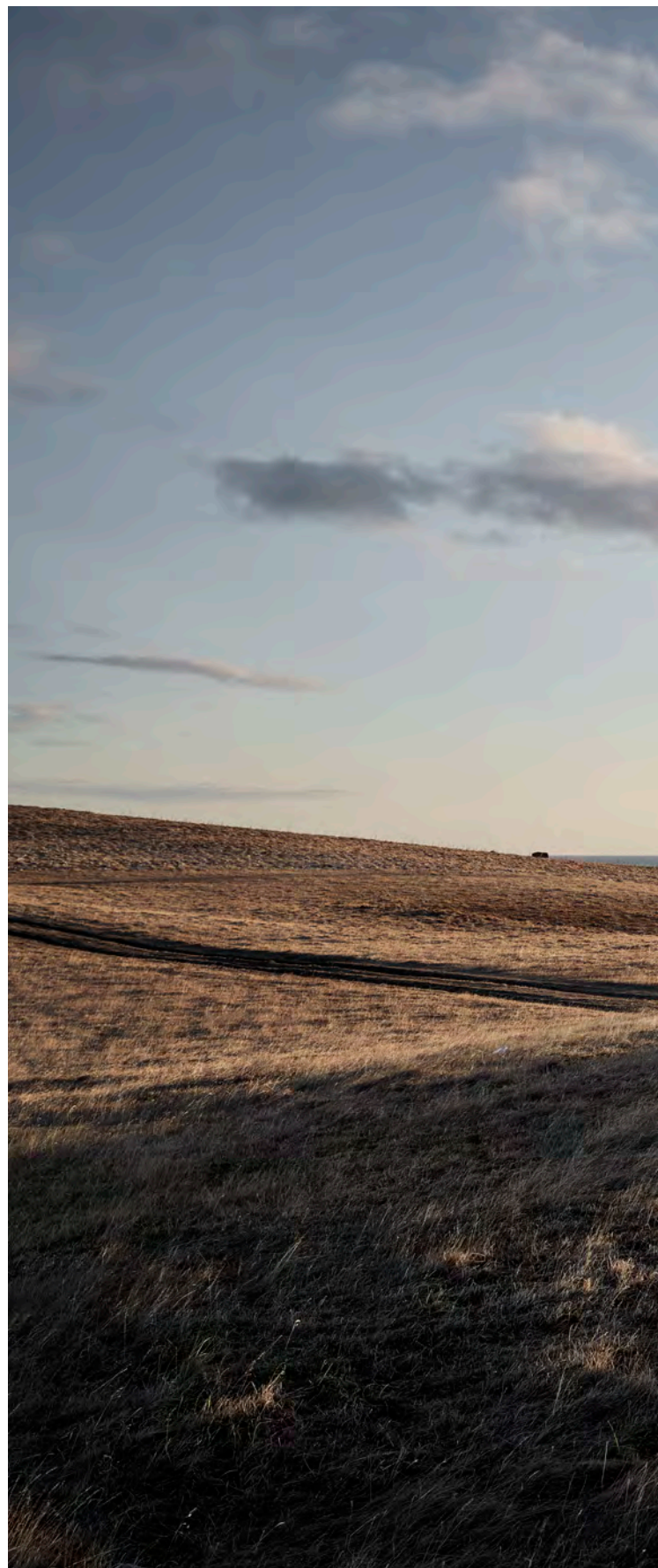
Includes V90 Cross Country Pro trim level plus the following:

**Exterior:**

20" unique alloy wheels | Crystal White (exclusive colour) | Unique colour on exterior parts (front and rear bumper, side moulding) | Unique colour on grille | Unique emblem | Roof carrier, colour coordinated | Rear air suspension

**Interior:**

Unique upholstery in combination of leather and textile with orange details | Orange safety belts | Door panels with orange stitching | Front seat hardback in Leather | Unique, reversible seat covers (water-resistant), front seats | Unique gear lever stitching | Leather side tunnel | Carbon fibre deco | Illuminated metal door tread plates with Volvo Ocean Race text, front | Unique textile inlay mats, front and rear | Unique translucent mats, front and rear | Double USB, second row | Power outlet 230v, second row | Unique luggage floor in composite material | Unique luggage floor material with designed rails | Unique floor net, luggage compartment | Net on the side in luggage compartment | Translucent floor mat in luggage compartment (water protection) | Unique dirt protection | Extra LED on tailgate in luggage compartment | Double USB in luggage compartment | 12 V in luggage compartment | Torch light | Wet & Dry storage bag | Smartphone integration



**T6 AWD | V90 Cross Country Volvo Ocean Race**

707 Crystal White pearl |  
20" Volvo Ocean Race alloy wheels





1

Finished in a colour scheme that's exclusive to this model, the V90 Cross Country Volvo Ocean Race combines an exclusive high-gloss Crystal White paint colour with Kaolin Grey trim and high-contrast Flare Orange highlights. So it's instantly recognisable, wherever your adventure takes you.

Fine details such as the stainless steel side scuff plates with the Cross Country logo, integrated tailpipes and a discreet Volvo Ocean Race emblem on the tailgate add up to create a distinctive impression. The five-spoke 20-inch wheels have been designed specifically for this car, and have a diamond-cut finish on the faces.

---

**1-2.** The unique front grille in Kaolin Grey and skid plate in Silver finish with contrasting Flare Orange moulding. **3.** The discreet Volvo Ocean Race badge is fitted on the tailgate. **4-5.** At the rear, the lower bumper in Kaolin Grey with stainless steel tailpipes integrated in the rear skid plate with Flare Orange moulding confidently manifests the exclusive Volvo Ocean Race character. **6.** Specially designed for the V90 Cross Country Volvo Ocean Race, the large 5-spoke 20-inch alloy wheels in Silver finish add to the car's bold, adventurous character. **7.** The sill mouldings are in Kaolin Grey with Cross Country side scuff plates in stainless steel. **8.** The Flare Orange detailing adds to the subtle yet distinctive Volvo Ocean Race touch. **9.** The aerodynamic load carriers in Kaolin Grey and our specially-designed Volvo Ocean Race roof box in glossy Crystal White perfectly complement the car's design and versatile character.





2



3



4



5



6



7



8



9



1

To the understated luxury and considered practicality of the V90 Cross Country, we've added a set of unique features that set the interior of the V90 Cross Country Volvo Ocean Race apart.

Open the door and you're greeted by Volvo Ocean Race tread plates on the sills. The cabin features carbon fibre trim on the doors and dashboard, with Flare Orange piping on the unique upholstery and Flare Orange safety belts. Leather cladding on the seat backs and tunnel console adds to the mix of authentic, crafted materials.

With its practical features, the V90 Cross Country Volvo Ocean Race is ready to become an indispensable part of your adventures. A water-resistant storage bag keeps wet gear contained or dry



2

clothes dry. The load compartment floor is made from durable, waterproof material. There's a water-resistant, translucent load compartment mat, with an extension that covers the backs of the rear seats when they're folded. Two storage nets (with Flare Orange piping) keep your equipment from sliding around. And if you need more storage there's a roof box (in Crystal White, to match the bodywork) available as an accessory.

We've included a powerful LED torch, made from unbreakable aerospace-grade aluminium, so when it gets dark, you can keep going. And a foldout mat covers the bumper so you can sit on it without getting your clothes dirty.

**1.** The flexible load compartment mat in thermoplastic rubber protects the load compartment floor and folded rear seat backrests from dirt and moist. Perfectly fitting the Volvo Ocean Race style, it's semi-transparent in a light grey colour. **2.** Inspired by exclusive yachts, the unique load compartment floor in durable material with metal stripes provides an elegant and adventurous look. And with the bumper dirt protection mat, you easily turn the tailgate opening into a comfortable seating area. **3.** The specially-designed Charcoal elastic storage net with Flare Orange details helps keep loose items secured using tough carabiners attached to the load compartment floor's folding eyelets. **4.** A powerful, extremely durable LED torchlight in black aerospace aluminium is conveniently fitted to the rear right side of the load compartment. Three different power modes – High, Low and Flash – make it easy to adapt the light output to your needs. **5.** The leather-clad map pockets are Flare Orange on the inside and add to the exclusive look and feel. The Volvo Ocean Race textile above the pockets provides a fresh design tweak. **6.** Leather gear shifter gaiter with contrasting seams and decor panels in genuine carbon fibre create a high-tech look, while the finely crafted leather-clad tunnel console sides add to the exclusive interior ambience. **7.** The Flare Orange leather piping in the door side armrests subtly matches the other interior design details. For an enhanced sense of exclusivity, the tailored upper door panels and dashboard feature contrasting Blond seams. **8.** The Flare Orange interior design details, such as the safety belts, add a contemporary look that contributes to the unique experience inside the V90 Cross Country Volvo Ocean Race. **9.** The aluminium instep plates with engraved Volvo Ocean Race logotype lit up every time you open the front door to give you an illuminated welcome. Specially-designed Charcoal textile mats with Flare Orange piping perfectly complement the Volvo Ocean Race style. **10.** For your rear seat passengers, the two standard-fitted USB ports facilitate charging of mobile devices while the 115/230V power outlet makes it possible to use more power consuming devices such as a laptop.



3



4



5



6



7



8



9



10

The sculpted, supportive Contour seats in the V90 Cross Country Volvo Ocean Race are finished in an upholstery designed specifically for this car. A mix of rich, supple leather and smart, practical textile, it's available in Blond or Charcoal. Also included are water-resistant,

reversible seat covers to protect the upholstery and a set of translucent waterproof mats (as well as the textile mats) to keep the carpet clean and dry.



Contour seat

---

**UPHOLSTERIES** Fine Nappa Leather/Graphite Open Grid Textile 1. Charcoal (Flare Orange piping) in Charcoal interior with charcoal headlining and Flare Orange seat belt, RB0Z  
2. Blond (Flare Orange piping and blond deco seams) in Blond/Charcoal interior with blond headlining and Flare Orange seat belt, UB0Z

**MATS** 3. Textile or translucent

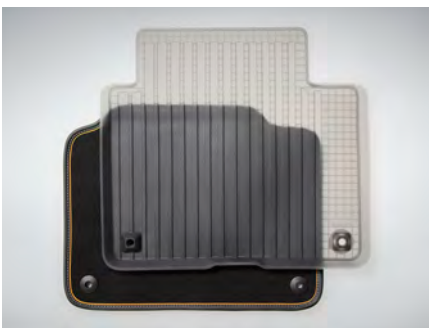
**SEAT COVERS** 4. Front seat covers, reversible **INLAY** 5. Carbon fibre



1



2



3



4



5

ACCESSORIES.  
YOUR V90, THE WAY YOU WANT IT.



714 Osmium Grey metallic | Exterior styling package with chrome inserts |  
21" 10-Open Spoke Turbine Tinted Silver/Diamond Cut alloy wheels



**Inscription**  
711 Bright Silver metallic | Exterior styling kit with body-coloured inserts |  
21" 5-Spoke Fan Silver Bright alloy wheels

Make the V90 your own with Volvo styling accessories; the perfect addition to your new car. Choose the exterior styling package with chrome inserts for an even more elegant look. Or enhance the dynamic character of your V90 with our exterior styling package

with body-coloured inserts. And especially for your V90 R-Design, we've created an exterior styling kit with glossy black inserts that adds to the car's exclusive appearance. You can also select individual components as separate accessories.



**Exterior styling package with chrome inserts.** The front spoiler lip adds definition to the front end, while the chrome insert highlights the car's width. The sill mouldings emphasise the car's sporty, low-slung profile. At the rear, a body-coloured rear diffuser and integrated dual split end pipes give the car a powerful presence. The optional 21-inch 10-Open Spoke Turbine wheels add to the car's elegance and a more powerful visual statement.



**Exterior styling package with body-coloured inserts.** A front spoiler and sculpted side sill mouldings with body-coloured inserts accentuate the car's low stance, while the integrated dual split end pipes and a body-coloured rear diffuser create an even more purposeful appearance. The optional 21-inch 5-Spoke Fan wheels give the V90 even more presence, whether it's moving or standing still.



**R-Design**

720 Bursting Blue metallic | Exterior styling package with glossy black inserts |  
21" 5-Double Spoke Matt Black/Diamond Cut alloy wheels



**T6 AWD | Cross Country Pro**

714 Osmium Grey metallic | Exterior body styling with side scuff plates, dual split tail pipes |  
Bumper cover | 21" 7-Open Spoke Matt Tech Black Diamond Cut alloy wheels





**R-Design exterior styling package with glossy black inserts.** Designed to perfectly complement your V90 R-Design, this exterior styling package with high-gloss black inserts allows you to create an exclusive, individual look. The front spoiler combines with the sill mouldings to emphasise the car's low-slung profile, while the split end pipes create an even more powerful appearance. This exterior styling kit is also available with body-coloured inserts. The optional 21-inch 5-Double-Spoke alloy wheels in Matt Black/Diamond Cut add to a superior road presence.



**Exterior styling accessories.** The side scuff plates in brushed stainless steel and dual split tail pipes perfectly complement the adventurous appearance of your V90 Cross Country. Adding attitude beyond the ordinary, the powerful, large 21-inch Matt Tech Black alloy wheels in expressive 7-Open Spoke Diamond Cut design further enhance the car's rugged looks.

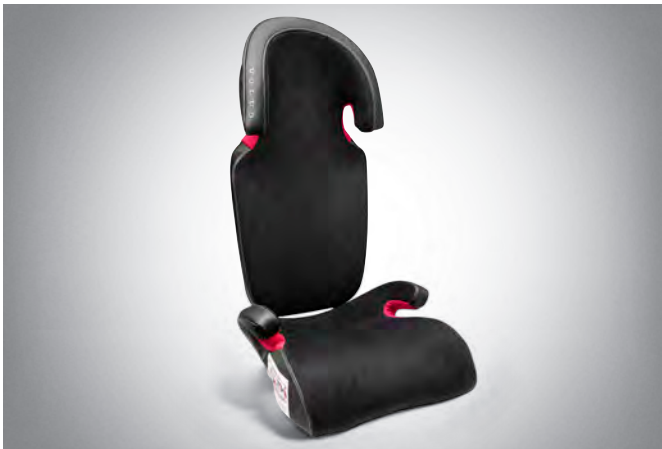
## DESIGNED FOR YOUR LIFE.

Create a V90 that's perfect for your life, with Volvo accessories that are designed around you and your car.

Our Media Server allows passengers to enjoy large amounts of stored entertaining content via their mobile devices, especially comfortable combined with our sleek iPad® holder.

The sleek iPad® holder complements the car's interior. It allows rear-seat passengers to watch, read or play and has two USB ports for charging devices. Discreet, slim sunshades protect from heat and glare, neatly retracting when not needed.

The remote control can be personalised to match, or contrast, your car's interior trim, with different exterior casings in genuine wood or leather. Our child seats combine comfort with state of the art safety and are designed to fit perfectly into your Volvo. Made from Wooltextile, which is 80% wool, they're durable and tough but also soft and breathable, so your children stay comfortable and safe. Our exclusive booster cushion in genuine Leather and soft Nubuck Textile with adjustable backrest allows a child to travel in comfort safely restrained by the car's safety belt. We apply the same stringent standards to our child seats as we do to building our cars, so you know your children are well protected.



1



2



3



4



5



6



7



8

5. Media Server and iPad® holder\*, rear seat. 6. Plastic floor mats. 7. Illuminated tailgate scuff plate (Inscription only). 8. Personalised remote key fob, Linear Walnut.

\* Available later 2018. Excludes iPad®.

## BUILT TO WORK.

Make your life easier with accessories that extend the built-in versatility of the V90 and protect the car's interior. Made from tough, high-quality materials they're built to withstand the punishment inflicted by Sweden's winter.

Take advantage of our range of roof-mounted accessories by adding our low-profile load carriers. Easy to fit onto the car's roof rails, they instantly allow you to fit our load carrier accessories, from the ski rack to the canoe holder. Our lightweight roof box fits straight onto the load carriers, adding 350 litres to the car's carrying capacity. Ideally suited to carrying skis (and capable of carrying up to six pairs) its Quick-grip mountings make it possible to fit with one hand. Neat touches such as LED lighting in the lid, to help you load in the dark.

The bumper cover protects the paintwork from damage caused by loading objects into the boot. Made from stainless steel with a high gloss finish, the cover looks great and works well. An

illuminated tailgate scuff plate covers the load sill, while a steel grille provides a sturdy barrier between boot and passenger compartment. The load compartment divider splits the boot in two so you can carry two pets. Add a dog gate to create a secure compartment and a load liner to protect the boot floor. And helping you to maintain the attractive appearance of the load compartment even if you occasionally transport dirty cargo, we have created a range of versatile tailor-made load compartment mats.

The electrically folding tow bar gives you the ability to tow and folds discreetly away when not in use. A press of a button inside the load compartment, and the tow bar folds out – all you have to do is lock it into position with one click. If the tow bar is not locked in position or if any of the lights on the trailer cease to function, you'll be alerted in the car's driver display.

Your Volvo Cars dealer can also offer a wide range of winter wheels for safe driving during the wet and cold season.



1



2



3



4



5



6



7

3. Roof box designed by Volvo Cars. 4. Load carriers. 5. Bumper cover. 6. Front mud flaps. 7. Semi-electrical towbar.

VOLVO **v90**

## WELCOME TO VOLVO CAR LIFESTYLE COLLECTION.

Our Lifestyle Collection includes a wide range of lifestyle accessories – from Swedish crystal and crafted leather bags, to clothing, watches and more selected items. To view the complete collection, please visit [collection.volvocars.com](https://collection.volvocars.com)



## SERVICE BY VOLVO. A SIMPLER WAY.

When you buy a Volvo, you buy the simplest way to have a car. No matter what your car may need, your authorised Volvo workshop will take care of it for you and make sure that your Volvo stays in tip-top shape.

We have our own approach to service that's personal, efficient, and which takes care of you as well as it takes care of your

car. We call it Service by Volvo and it will provide everything you need in the simplest way possible.

Your Volvo Cars dealer offers a whole range of simplifying services all designed around you, ensuring you a carefree ownership experience. Still, this is just the beginning. Soon, you will also get a Personal Service

Technician, your car will be ready within the hour and you can relax in our lounge instead of driving back and forth. It's because everything we do is about finding new ways to make life simpler for people, with our cars as well as our service.

### BUYING & OWNING

- Warranties
- Financing
- Leasing
- Insurance
- Service Contract
- My Volvo website

### VOLVO SERVICE PROMISE

- Volvo Genuine Service
- Software Updates
- Roadside Assistance
- Personal Service Contact
- Car Wash and Vac<sup>1</sup>
- Price Promise
- Health Check
- Alternative Transport

### IF SOMETHING HAPPENS

- Volvo Assistance
- Volvo Glass Services
- Volvo Dent Repair
- Car Climate Services
- Tyre Services
- Volvo Accident Assistance

### HAVE YOU GOT YOUR VOLVO ID?

A Volvo ID allows you to access a whole world of connectivity with your Volvo. With your Volvo ID, you can:

- Access your My Volvo account on [volvocars.co.uk](http://volvocars.co.uk) for car information
- Access internet services and apps in your car, including connected service booking
- When applicable, sign in to the Volvo On Call app and connect with your car from everywhere

### CONNECTED SERVICE BOOKING

If your Volvo has Sensus Connect, it will remind you when it needs servicing and offer to contact your Volvo dealer for you. Booking proposals sent from your preferred dealer can easily be managed directly in the car. When the time comes to drive to your workshop, your Volvo will remind you and even guide you there. And since your Volvo tells us what it needs, we can make sure it always receives the service it requires when it gets there.

**V O L V O**

**Official fuel consumption for the Volvo V90 and V90 Cross Country in MPG (l/100km) ranges from:**

Urban 28.2 (10.0)–50.4 (5.6), Extra Urban 42.2 (6.7)–64.2 (4.4),  
Combined 35.8 (7.9)– 134.5 (2.1). CO<sub>2</sub> Emissions range from 183–47g/km.  
MPG figures are obtained from laboratory testing intended for comparisons  
between vehicles and may not reflect real driving results.