

VOLVO  
**V50 PRICING**

**VOLVO**  
for life



# THE VOLVO V50

The Volvo V50 Sportswagon has been designed with a zest for life and an eye for detail. The V-shaped bonnet, full-length pronounced shoulders and distinctive rear styling ensure instant recognition as a Volvo, and the innovative lines indicated by the outside continue inside.

The radical design of the floating centre stack conjures images of contemporary high-end technology. A world first, controls for the sophisticated audio system and electronic climate control are co-located in the style of a high-tech remote-control unit to create a feeling of unassuming simplicity.

|                                 |     |
|---------------------------------|-----|
| CHOOSE YOUR VOLVO               | 2-3 |
| STANDARD AND OPTIONAL EQUIPMENT | 4-5 |
| ACCESSORIES & UPHOLSTERY        | 6-7 |
| TECHNICAL SPECIFICATION         | 8-9 |
| CHOOSE YOUR COLOUR              | 10  |
| CARE BY VOLVO                   | 11  |

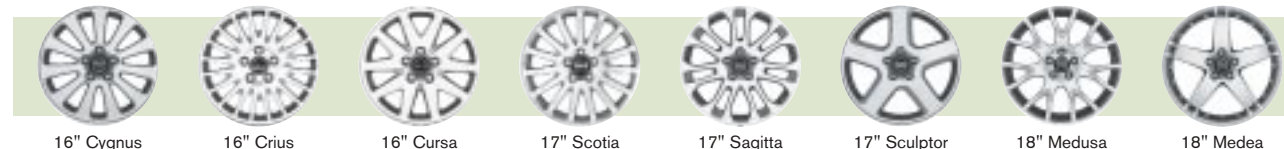
| V50 S                 | The comprehensive specification includes ECC (Electronic Climate Control), 16" Cygnus alloy wheels, DSTC (Dynamic Stability and Traction Control), power windows, cruise control, leather steering wheel, a 6-speaker radio/CD system and roof rails. |                        | Basic £    | VAT £      | Rec Retail Price £ | On the Road Price £ | On the Road Price € <sup>(i)</sup> Euros |
|-----------------------|---|------------------------|------------|------------|--------------------|---------------------|--|
| V50 S                 |   | <b>PETROL</b>          |            |            |                    |                     |  |
|                       |   | 1.8 S                  | £14,625.53 | £2,559.47  | £17,185.00         | £17,853.00          | €25,904.70                               |
|                       |   | 2.4i S                 | £16,731.91 | £2,928.09  | £19,660.00         | £20,343.00          | €29,517.69                               |
|                       |   | <b>DIESEL</b>          |            |            |                    |                     |  |
|                       |   | 2.0D S Euro III        | £15,710.64 | £2,749.36  | £18,460.00         | £19,113.00          | €27,732.96                               |
|                       |   | 2.0D S Euro IV         | £15,965.96 | £2,794.04  | £18,760.00         | £19,413.00          | €28,168.26                               |
| V50 SPORT             | The striking exterior lines are enhanced with 18" Medusa alloy wheels and full bodykit whilst the unique interior design is complemented with the addition of new Dala upholstery.  |                        | Basic £    | VAT £      | Rec Retail Price £ | On the Road Price £ | On the Road Price € <sup>(i)</sup> Euros |
| V50 SPORT             |   | <b>PETROL</b>          |            |            |                    |                     |  |
|                       |   | 1.8 Sport              | £16,029.79 | £2,805.21  | £18,835.00         | £19,503.00          | €28,298.85                               |
|                       |   | 2.4i Sport             | £18,136.17 | £3,173.83  | £21,310.00         | £21,993.00          | €31,911.84                               |
|                       |   | T5 Sport               | £20,582.98 | £3,602.02  | £24,185.00         | £24,868.00          | €36,083.47                               |
|                       |   | <b>DIESEL</b>          |            |            |                    |                     |  |
|                       |   | 2.0D Sport Euro III    | £17,114.89 | £2,995.11  | £20,110.00         | £20,763.00          | €30,127.11                               |
| 2.0D Sport Euro IV    | £17,370.21  | £3,039.79              | £20,410.00 | £21,063.00 | €30,562.41         |                     |  |
| V50 SE                | The SE model brings added luxury to the V50 Sportswagon. Leather upholstery, 17" Sculptor alloy wheels, information centre, a choice of interior inlays and power driver's seat are just some of the standard SE features.                            |                        | Basic £    | VAT £      | Rec Retail Price £ | On the Road Price £ | On the Road Price € <sup>(i)</sup> Euros |
| V50 SE                |   | <b>PETROL</b>          |            |            |                    |                     |  |
|                       |   | 1.8 SE                 | £16,540.43 | £2,894.57  | £19,435.00         | £20,103.00          | €29,169.45                               |
|                       |   | 2.4i SE                | £18,646.81 | £3,263.19  | £21,910.00         | £22,593.00          | €32,782.44                               |
|                       |   | T5 SE                  | £21,093.62 | £3,691.38  | £24,785.00         | £25,468.00          | €36,954.07                               |
|                       |   | T5 AWD SE              | £21,944.68 | £3,840.32  | £25,785.00         | £26,468.00          | €38,405.07                               |
|                       |   | <b>DIESEL</b>          |            |            |                    |                     |  |
|                       |   | 2.0D SE Euro III       | £17,625.53 | £3,084.47  | £20,710.00         | £21,363.00          | €30,997.71                               |
|                       |   | 2.0D SE Euro IV        | £17,880.85 | £3,129.15  | £21,010.00         | £21,663.00          | €31,433.01                               |
| V50 SE SPORT          | The SE Sport model is the ultimate choice within the range, combining the extensive interior luxury features of the SE with the dramatic exterior bodykit and 18" alloy wheels from the Sport model.  |                        | Basic £    | VAT £      | Rec Retail Price £ | On the Road Price £ | On the Road Price € <sup>(i)</sup> Euros |
| V50 SE SPORT          |   | <b>PETROL</b>          |            |            |                    |                     |  |
|                       |   | 1.8 SE Sport           | £17,561.70 | £3,073.30  | £20,635.00         | £21,303.00          | €30,910.65                               |
|                       |   | 2.4i SE Sport          | £19,668.09 | £3,441.91  | £23,110.00         | £23,793.00          | €34,523.64                               |
|                       |   | T5 SE Sport            | £22,114.89 | £3,870.11  | £25,985.00         | £26,668.00          | €38,695.27                               |
|                       |   | <b>DIESEL</b>          |            |            |                    |                     |  |
|                       |   | 2.0D SE Sport Euro III | £18,646.81 | £3,263.19  | £21,910.00         | £22,563.00          | €32,738.91                               |
| 2.0D SE Sport Euro IV | £18,902.13  | £3,307.87              | £22,210.00 | £22,863.00 | €33,174.21         |                     |  |



(i) Euro prices shown are calculated using an exchange rate of 1.451 Euros to the £, the exchange rate published in the Financial Times as at 1st March 2005. Euro prices will be subject to the prevailing exchange rate at the time of purchase. These figures are for information purposes only.

| SAFETY & SECURITY   | S | SPORT | SE | SE SPORT |
|---|---|-------|----|----------|
| Dual Stage Driver and Passenger Airbags   | • | •     | •  | •        |
| SIPS (Side Impact Protection System)  | • | •     | •  | •        |
| SIPS Airbags  | • | •     | •  | •        |
| IC (Inflatable Curtain)   | • | •     | •  | •        |
| WHIPS (Whiplash Protection System) (Front Seats)  | • | •     | •  | •        |
| ABS (Anti-lock Brakes) with EBD (Electronic Brake Distribution) and Electronic Brake Assistance | • | •     | •  | •        |
| DSTC (Dynamic Stability and Traction Control)   | • | •     | •  | •        |
| 5 Three Point Seat Belts  | • | •     | •  | •        |
| Seat Belt Pre-tensioners (Front and Outer Rear)   | • | •     | •  | •        |
| Head Restraints – All 5 Seats   | • | •     | •  | •        |
| Anti-theft Alarm including Immobiliser  | • | •     | •  | •        |
| Key Integrated Remote Control Central Locking including Fuel Flap with Deadlocking System       | • | •     | •  | •        |
| Tinted Windows  | • | •     | •  | •        |
| Load Cover and Load Protection Net  | • | •     | •  | •        |
| Visible VIN Plate   | • | •     | •  | •        |
| Day Running Lights  | • | •     | •  | •        |
| Headlamp Levelling System   | • | •     | •  | •        |
| High Level LED Brake Light  | • | •     | •  | •        |
| Side Marker Illumination  | • | •     | •  | •        |
| Home Safe and Approach Lighting   | • | •     | •  | •        |
| INTERIOR  | S | SPORT | SE | SE SPORT |
| ECC (Electronic Climate Control) with AQS (Air Quality System) and Pollen Filter                | • | •     | •  | •        |
| Exterior Temperature Gauge  | • | •     | •  | •        |
| Information Centre  | • | •     | •  | •        |
| Cruise Control  | • | •     | •  | •        |
| Front and Rear Power Windows  | • | •     | •  | •        |
| Power Adjustable and Heated Door Mirrors  | • | •     | •  | •        |
| Illuminated Driver and Passenger Vanity Mirrors   | • | •     | •  | •        |
| Front and Rear Reading Lamps  | • | •     | •  | •        |
| Autodimming Rear View Mirror  | • | •     | •  | •        |
| Rear Centre Armrest with Twin Cupholders and Storage  | • | •     | •  | •        |
| Front Cupholders  | • | •     | •  | •        |
| Grocery Bag Holder  | • | •     | •  | •        |
| Rear 12v Socket   | • | •     | •  | •        |
| Power Driver's Seat (with Seat Memory)  | • | •     | •  | •        |
| Forward Folding Front Passenger Seat  | • | •     | •  | •        |
| Height Adjustable Passenger Seat with Lumbar Support  | • | •     | •  | •        |
| Asymmetric Split-folding Rear Seat (60%/40%)  | • | •     | •  | •        |
| Front Centre Armrest  | • | •     | •  | •        |
| Leather Steering Wheel  | • | •     | •  | •        |
| Leather Gear Knob   | • | •     | •  | •        |
| Steering Wheel Remote Audio Controls  | • | •     | •  | •        |
| Height and Reach Adjustable Steering Column   | • | •     | •  | •        |
| Bauxite Trim  | • | •     | •  | •        |
| Aluminium Trim  | • | •     | •  | •        |
| Wood Effect Trim  | • | •     | •  | •        |
| Bodal Textile Upholstery  | • | •     | •  | •        |
| Dala T-Tec Upholstery   | • | •     | •  | •        |
| Leather Upholstery  | • | •     | •  | •        |
| Performance Sound Audio System – CD/Radio, 4 x 20W Amplifier and 6 Speakers                     | • | •     | •  | •        |
| High Performance Sound Audio System – 6 x CD/Radio, 4 x 40W Amplifier and 8 Speakers            | • | •     | •  | •        |
| EXTERIOR  | S | SPORT | SE | SE SPORT |
| 16" Cygnus Alloy Wheels – 205/55 R16 91W Tyres  | • | •     | •  | •        |
| 17" Sculptor Alloy Wheels – 205/50 R17 89W Tyres  | • | •     | •  | •        |
| 18" Medusa Alloy Wheels – 215/45 R18 93W Tyres  | • | •     | •  | •        |
| Locking Wheel Nuts  | • | •     | •  | •        |
| Tempa Spare Wheel (not AWD)   | • | •     | •  | •        |
| Tyre Sealant Kit (AWD only)   | • | •     | •  | •        |
| Front Fog Lights  | • | •     | •  | •        |
| Speed Dependent Interval Wiper Function   | • | •     | •  | •        |
| Rain Sensor – Automatic Windscreen Wiper Activation   | • | •     | •  | •        |
| Roof Rails  | • | •     | •  | •        |
| Comfort Chassis (Sport – 1.8 only)  | • | •     | •  | •        |
| Dynamic Chassis (SE – T5/T5 AWD only)   | • | •     | •  | •        |
| Rally Bar (Front Strut Stiffener)   | • | •     | •  | •        |
| Full Body Kit (Front and Rear Spoilers and Side Skirts)   | • | •     | •  | •        |
| Grey Sill Cover with Stainless Steel Step Covers  | • | •     | •  | •        |
| Grey Side Mouldings   | • | •     | •  | •        |
| Full Body Coloured Side Mouldings   | • | •     | •  | •        |

| SAFETY & SECURITY   | Basic £   | VAT £   | Rec Retail Price £ | Rec Retail Price € <sup>(i)</sup> | S   | SPORT    | SE       | SE SPORT |
|---|-----------|---------|--------------------|-----------------------------------|-----|----------|----------|----------|
| Passenger Airbag Cut Off Switch   | £21.28    | £3.72   | £25.00             | €36.28                            | o   | o        | o        | o        |
| Laminated Side Windows  | £255.32   | £44.68  | £300.00            | €435.30                           | o   | o        | o        | o        |
| Inclination Sensor  | £106.38   | £18.62  | £125.00            | €181.38                           | o   | o        | o        | o        |
| ISOFIX Attachment (Rear Seats)  | £23.83    | £4.17   | £28.00             | €40.63                            | o   | o        | o        | o        |
| INTERIOR  | Basic £   | VAT £   | Rec Retail Price £ | Rec Retail Price € <sup>(i)</sup> | S   | SPORT    | SE       | SE SPORT |
| Geartronic Transmission (2.4i and T5 only)  | £1,063.83 | £186.17 | £1,250.00          | €1,813.75                         | o   | o        | o        | o        |
| Keyless Drive   | £425.53   | £74.47  | £500.00            | €725.50                           | o   | o        | o        | o        |
| Power Glass Tilt & Slide Sunroof  | £595.74   | £104.26 | £700.00            | €1,015.70                         | o   | o        | o        | o        |
| Autodimming Rear View Mirror  | £170.21   | £29.79  | £200.00            | €290.20                           | o   | o        | •        | •        |
| Power Folding Door Mirrors with Ground Lights   | £170.21   | £29.79  | £200.00            | €290.20                           | o   | o        | o        | o        |
| Front and Rear Ashtray with Cigarette Lighter   | –         | –       | –                  | –                                 | nco | nco      | nco      | nco      |
| Power Driver's Seat (with Seat Memory)  | £468.09   | £81.91  | £550.00            | €798.05                           | o   | o        | •        | •        |
| Power Driver and Passenger Seats (with Driver's Seat Memory)  | £936.17   | £163.83 | £1,100.00          | €1,596.10                         | o   | o        | u (£550) | u (£550) |
| Aluminium Trim  | –         | –       | –                  | –                                 | n/a | •        | nco      | nco      |
| Wood Effect Trim  | –         | –       | –                  | –                                 | n/a | n/a      | •        | •        |
| Leather-faced Upholstery  | £1,021.28 | £178.72 | £1,200.00          | €1,741.20                         | o   | u (£600) | •        | •        |
| High Performance Sound Audio System – 6 x CD Radio, 4 x 40W Amplifier and 8 Speakers  | £212.77   | £37.23  | £250.00            | €362.75                           | o   | o        | •        | •        |
| Premium Sound Audio System – with Dolby Pro Logic II Surround Sound <sup>(ii)</sup> , 4 x 70W Amplifier, 6 x CD, 12 Speakers and Steering Wheel Remote Audio Controls | £425.53   | £74.47  | £500.00            | €725.50                           | o   | o        | u (£250) | u (£250) |
| 1 x CD/1 x MD (to replace 6 x CD) <sup>(iii)</sup>  | –         | –       | –                  | –                                 | nco | nco      | nco      | nco      |
| RTI Navigation System with RDS-TMC and Europe DVD Maps <sup>(iv)</sup>  | £1,872.34 | £372.66 | £2,200.00          | €3,192.20                         | o   | o        | o        | o        |
| Dual Band Integrated GSM Telephone <sup>(v)</sup>   | £425.53   | £74.47  | £500.00            | €725.50                           | o   | o        | o        | o        |
| EXTERIOR  | Basic £   | VAT £   | Rec Retail Price £ | Rec Retail Price € <sup>(i)</sup> | S   | SPORT    | SE       | SE SPORT |
| Black Paint (Solid)   | £212.77   | £37.23  | £250.00            | €362.75                           | o   | o        | o        | o        |
| Metallic/Pearlescent Paint  | £425.53   | £74.47  | £500.00            | €725.50                           | o   | o        | o        | o        |
| Inscription™ Coarse Flake Metallic Paint  | £638.30   | £111.70 | £750.00            | €1,088.25                         | o   | n/a      | o        | n/a      |
| 16" Crius Alloy Wheels – 205/55 R16 91 V/W Tyres  | –         | –       | –                  | –                                 | nco | n/a      | nco      | n/a      |
| 16" Cursa Alloy Wheels – 205/55 R16 91 V/W Tyres  | –         | –       | –                  | –                                 | nco | n/a      | nco      | n/a      |
| 17" Sagitta Alloy Wheels – 205/50 R17 89W Tyres   | £255.32   | £44.68  | £300.00            | €435.30                           | o   | nco      | nco      | nco      |
| 17" Sculptor Alloy Wheels – 205/50 R17 89W Tyres  | £255.32   | £44.68  | £300.00            | €435.30                           | o   | n/a      | •        | n/a      |
| 17" Scotia Alloy Wheels – 205/50 R17 89W Tyres  | £425.53   | £74.47  | £500.00            | €725.50                           | o   | n/a      | u (£300) | n/a      |
| 18" Medea Alloy Wheels – 215/45 R18 93W Tyres   | £425.53   | £74.47  | £500.00            | €725.50                           | n/a | o        | n/a      | o        |
| Front Fog Lights  | £153.19   | £26.81  | £180.00            | €261.18                           | o   | •        | •        | •        |
| Tempa Spare Wheel (AWD only) <sup>(vi)</sup>  | –         | –       | –                  | –                                 | n/a | n/a      | nco      | n/a      |
| Delete Roof Rails   | –         | –       | –                  | –                                 | nco | nco      | nco      | nco      |
| Rear Park Assist  | £289.36   | £50.64  | £340.00            | €493.34                           | o   | o        | o        | o        |
| Load Compensating Suspension <sup>(vi)</sup>  | £425.53   | £74.47  | £500.00            | €725.50                           | o   | n/a      | o        | n/a      |



| WINTER PACK   | Basic £   | VAT £   | Rec Retail Price £ | Rec Retail Price € <sup>(i)</sup> | S | SPORT | SE | SE SPORT |
|---|-----------|---------|--------------------|-----------------------------------|---|-------|----|----------|
| Heated Front Seats, Headlamp Cleaning System and Luxury Floor Mats  | £297.87   | £52.13  | £350.00            | €507.85                           | o | o     | o  | o        |
| BI-XENON PACK   | Basic £   | VAT £   | Rec Retail Price £ | Rec Retail Price € <sup>(i)</sup> | S | SPORT | SE | SE SPORT |
| Bi-Xenon Headlamps, Headlamp Cleaning System, Heated Front Seats and Luxury Floor Mats                                      | £723.40   | £126.60 | £850.00            | €1,233.35                         | o | o     | o  | o        |
| FAMILY PACK   | Basic £   | VAT £   | Rec Retail Price £ | Rec Retail Price € <sup>(i)</sup> | S | SPORT | SE | SE SPORT |
| Integrated Booster Cushions x 2, Power Child Locks  | £212.77   | £37.23  | £250.00            | €362.75                           | o | o     | o  | o        |
| CONVENIENCE PACK  | Basic £   | VAT £   | Rec Retail Price £ | Rec Retail Price € <sup>(i)</sup> | S | SPORT | SE | SE SPORT |
| Information Centre, Autodimming Rear View Mirror, and Rain Sensor   | £382.98   | £67.02  | £450.00            | €652.95                           | o | o     | •  | •        |
| COMMUNICATIONS PACK   | Basic £   | VAT £   | Rec Retail Price £ | Rec Retail Price € <sup>(i)</sup> | S | SPORT | SE | SE SPORT |
| Volvo On Call <sup>(vii)</sup> , Dual Band Integrated GSM Telephone, RTI Navigation System with RDS-TMC and Europe DVD Maps | £2,127.66 | £372.34 | £2,500.00          | €3,627.50                         | o | o     | o  | o        |

• = standard, o = option, n/a = not available, nco = no cost option, u (£) = upgrade.  
 (i) Euro prices shown are calculated using an exchange rate of 1.451 Euros to the £ as published in the Financial Times on 1st March 2005. Euro prices will be subject to the prevailing exchange rate at time of purchase. These figures are for information purposes only.  
 (ii) Dolby and Pro Logic Surround Sound™ are trademarks of Dolby Laboratories Licensing Corporation.  
 (iii) Must be ordered in conjunction with High Performance or Premium Sound Audio Systems.  
 (iv) Volvo On Call includes Safety and Security packages.  
 (v) Grocery Bag Holder is removed when Tempa Spare Wheel is ordered.  
 (vi) Load Compensating Suspension is not available with AWD.

| ACCESSORIES   | Basic £ | VAT £  | Rec Retail Price £    | Rec Retail Price € <sup>(i)</sup> |
|---|---------|--------|-----------------------|-----------------------------------|
| <b>EXTERIOR ACCESSORIES (PRICES EXCLUDE FITTING UNLESS SHOWN OTHERWISE)</b> |         |        |                       |                                   |
| Aluminium Bike Rack (down tube clamp)                                       | £63.83  | £11.17 | £75.00                | €108.83                           |
| Bike Rack (servo lift)  | £81.70  | £14.30 | £96.00                | €139.30                           |
| Load Carrier (wing profile)   | £89.36  | £15.64 | £105.00               | €152.36                           |
| Load Carrier (different models available) ...from <sup>(iv)</sup>           | £84.26  | £14.74 | £99.00                | €143.65                           |
| Mud Flaps (front)   | £22.13  | £3.87  | £26.00                | €37.73                            |
| Mud Flaps (rear)  | £22.13  | £3.87  | £26.00                | €37.73                            |
| Roofbox – Sport Time 200 (440 litre volume)                                 | £267.23 | £46.77 | £314.00               | €455.61                           |
| Roofbox – Sport Time 500 (310 litre volume)                                 | £189.79 | £33.21 | £223.00               | €323.57                           |
| Roofbox – Space 650 (365 litre volume)                                      | £232.34 | £40.66 | £273.00               | €396.12                           |
| Roofbox – Space 650 (365 litre volume)                                      | £301.28 | £52.72 | £354.00               | €513.65                           |
| Roofbox – Weekender (370 litre volume)                                      | £215.32 | £37.68 | £253.00               | €367.10                           |
| Load Basket   | £83.40  | £14.60 | £98.00                | €142.20                           |
| Canoe/Kayak Carrier   | £34.04  | £5.96  | £40.00                | €58.04                            |
| Ski/Snowboard Carrier with Sliding Rail                                     | £60.43  | £10.57 | £71.00                | €103.02                           |
| Snow Chain – standard version (variety available) ...from <sup>(iv)</sup>   | £138.72 | £24.28 | £163.00               | €236.51                           |
| Towbar – Fixed type with 7 Pin Electrics <sup>(ii)</sup>                    | £349.79 | £61.21 | £411.00               | €596.36                           |
| Towbar – Fixed type with 13 Pin Electrics <sup>(ii)</sup>                   | £387.23 | £67.77 | £455.00               | €660.21                           |
| Towbar – Detachable type with 7 Pin Electrics <sup>(ii)</sup>               | £440.85 | £77.15 | £518.00               | €751.62                           |
| Towbar – Detachable type with 13 Pin Electrics <sup>(ii)</sup>              | £478.30 | £83.70 | £562.00               | €815.46                           |
| Front Park Assist <sup>(iii)</sup>  | £255.32 | £44.68 | £300.00               | €435.30                           |
| Rear Spoiler  | £284.26 | £49.74 | £334.00               | €484.63                           |
| Bumper Protector (dirt cover)   | £57.02  | £9.98  | £67.00                | €97.22                            |
| <b>INTERIOR ACCESSORIES (PRICES EXCLUDE FITTING UNLESS SHOWN OTHERWISE)</b> |         |        |                       |                                   |
| Boot Mat – moulded plastic  | £87.66  | £15.34 | £103.00               | €149.45                           |
| Boot Mat – textile/rubber reversible  | £88.51  | £15.49 | £104.00               | €150.90                           |
| Cargo Area Divider  | £72.34  | £12.66 | £85.00                | €123.34                           |
| Cooler/Hot Box (excludes power cable)                                       | £68.94  | £12.06 | £81.00                | €117.53                           |
| Hamburger Table   | £17.87  | £3.13  | £21.00                | €30.47                            |
| Hands-free Phone System ...from <sup>(iv)</sup>                             | £510.64 | £89.36 | £600.00               | €870.60                           |
| First Aid Kit   | £17.87  | £3.13  | £21.00                | €30.47                            |
| Load Liner – form moulded plastic   | £95.32  | £16.68 | £112.00               | €162.51                           |
| Load Securing Straps (cargo area)   | £17.87  | £3.13  | £21.00                | €30.47                            |
| Net Pocket (cargo area)   | £51.06  | £8.94  | £60.00                | €87.06                            |
| Padded Neck Cushion   | £22.98  | £4.02  | £27.00                | €39.18                            |
| Turn by Turn Sat Nav inc RDS-TMC (mono)                                     |         |        | available end of 2005 |                                   |
| Rubber Floor Mats (set of four)   | £64.68  | £11.32 | £76.00                | €110.28                           |
| Steel Safety Grille (behind second row of seats)                            | £121.70 | £21.30 | £143.00               | €207.49                           |
| Sunblind – rear door windows (pair)   | £51.06  | £8.94  | £60.00                | €87.06                            |
| Sunblind – rear compartment (3 pieces)                                      | £69.79  | £12.21 | £82.00                | €118.98                           |
| Table (rear centre armrest)   | £17.87  | £3.13  | £21.00                | €30.47                            |
| Warning Triangle  | £20.43  | £3.57  | £24.00                | €34.82                            |
| <b>CHILD</b>  |         |        |                       |                                   |
| Child Seat (ISOFIX)   |         |        | available Q3 2005     |                                   |
| Child Seat (non-ISOFIX)   | £146.38 | £25.62 | £172.00               | €249.57                           |
| Baby Insert   | £28.09  | £4.91  | £33.00                | €47.88                            |
| Child Booster Cushion   | £30.64  | £5.36  | £36.00                | €52.24                            |
| Child Booster Backrest (to go with above)                                   | £30.64  | £5.36  | £36.00                | €52.24                            |
| Padded Upholstery – for booster seat and headrest                           | £26.38  | £4.62  | £31.00                | €44.98                            |

(i) Euro prices shown are calculated using an exchange rate of 1.451 Euros to the £ as published in the Financial Times as at 1st March 2005. Euro prices will be subject to the prevailing exchange rate at the time of purchase. These figures are for information purposes only.

(ii) Indicates total fitted price post registration. At participating dealers only.

(iii) Must be ordered in conjunction with Rear Park Assist (factory fit option).

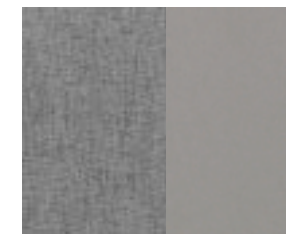
(iv) Prices for this accessory start at this level.

For further information and a complete list of all Volvo Accessories, just take a look at the new Accessory website at [www.volvocars.co.uk/accessories](http://www.volvocars.co.uk/accessories).

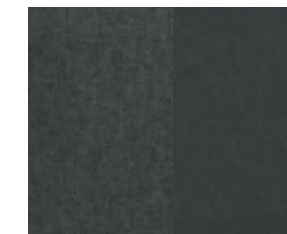
| UPHOLSTERY    | Upholstery Code | Upholstery Colour | Dashboard Top & Upper Door Panel | Lower Door Panel, Lower Dashboard, Carpet & Tunnel Console | Door Insert Colour | Headliner Colour |
|---------------|-----------------|-------------------|----------------------------------|--|--------------------|------------------|
| Bodal Textile | 5421            | Quartz Beige      | Umbr Brown                       | Quartz Beige   | Quartz Beige       | Quartz Beige     |
|               | 5477            | Off Black         | Off Black                        | Off Black  | Off Black          | Quartz Beige     |
| Dala T-Tec    | 5322            | Umbr Brown        | Umbr Brown                       | Quartz Beige   | Quartz Beige       | Quartz Beige     |
|               | 5377            | Off Black         | Off Black                        | Off Black  | Off Black          | Quartz Beige     |
| Leather-faced | 5900            | Lava Grey         | Lava Grey                        | Quartz Beige   | Lava Grey          | Quartz Beige     |
|               | 5921            | Quartz Beige      | Umbr Brown                       | Quartz Beige   | Quartz Beige       | Quartz Beige     |
|               | 5924            | Calcite Cream     | Umbr Brown                       | Quartz Beige   | Calcite Cream      | Quartz Beige     |
|               | 5977            | Off Black         | Off Black                        | Off Black  | Off Black          | Quartz Beige     |

## UPHOLSTERY

### BODAL



Quartz Beige (5421)

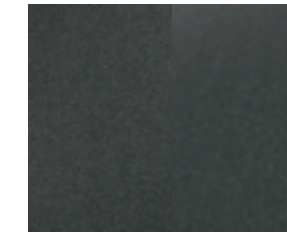


Off Black (5477)

### DALA



Umbr Brown (5322)



Off Black (5377)

### LEATHER



Quartz Beige (5921)



Lava Grey (5900)



Off Black (5977)



Calcite Cream (5924)

## INTERIOR INLAYS



Bauxite



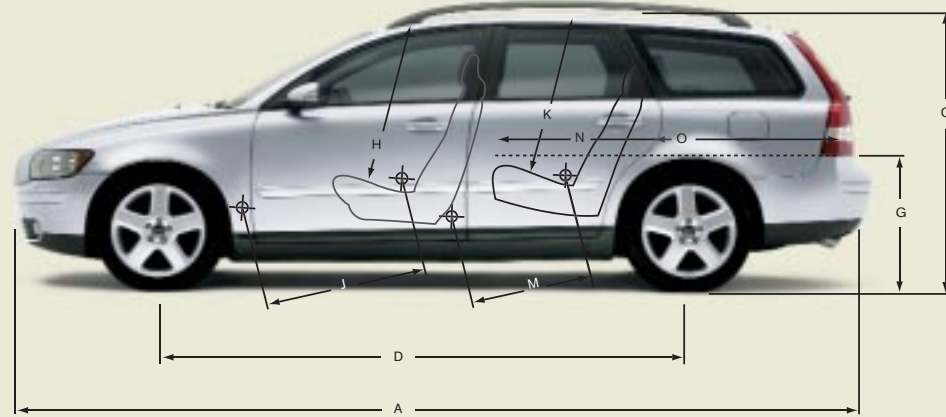
Aluminium



Wood effect

NB It is not possible to reproduce exact original shades in printed matter.

| ENGINE                      | 1.8                       | 2.4i                      | T5                                     | T5 AWD                                 | 2.0D Euro III/IV                 |
|-----------------------------|---------------------------|---------------------------|--|--|----------------------------------|
| Configuration               | Transverse – 16 valve     | Transverse – 20 valve     | Transverse – 20 valve                  | Transverse – 20 valve                  | Transverse – 16 valve            |
| Cylinders                   | 4                         | 5                         | 5                                      | 5                                      | 4                                |
| Engine capacity, cc         | 1798                      | 2435                      | 2521                                   | 2521                                   | 1997                             |
| Bore x stroke, mm           | 83 x 83.1                 | 83 x 90                   | 83 x 93                                | 83 x 93                                | 85 x 88                          |
| Max. output ECE, bhp/kw/rpm | 125/92/6000               | 170/125/6000              | 220/162/5000                           | 220/162/5000                           | 136/100/4000                     |
| Max. torque ECE, Nm/rpm     | 165/4000                  | 230/4400                  | 320/1500 – 4800                        | 320/1500 – 4800                        | 320/2000                         |
| Octane rating               | 95 RON Unleaded (min. 91) | 95 RON Unleaded (min. 91) | 98 RON <sup>®</sup> Unleaded (min. 91) | 98 RON <sup>®</sup> Unleaded (min. 91) | N/A Diesel                       |
| Fuel system                 | Multipoint fuel injection | Multipoint fuel injection | Multipoint fuel injection              | Multipoint fuel injection              | Multipoint direct fuel injection |
| Compression ratio           | 10.8:1                    | 10.3:1                    | 9.0:1                                  | 9.0:1                                  | 18.5:1                           |



| INSURANCE GROUPS         | 1.8 | 2.4i | T5   | T5 AWD | 2.0D Euro III/IV |
|--------------------------|-----|------|------|--------|------------------|
| Volvo V50 <sup>(v)</sup> | 9 E | 13 E | 15 E | 15 E   | 10 E             |

E = Exceeds security requirements for model concerned and group rating has been reduced.

| WEIGHTS  | 1.8  | 2.4i | T5   | T5 AWD | 2.0D Euro III/IV |
|--|------|------|------|--------|------------------|
| Min. kerb weight, kg (actual kerb weight dependent on spec.) | 1299 | 1387 | 1414 | 1480   | 1390             |
| Max. possible towing weight braked, kg                       | 1300 | 1500 | 1500 | 1500   | 1500             |
| Max. towing weight unbraked approx, kg <sup>(iv)</sup>       | 650  | 700  | 700  | 700    | 700              |
| Max. total weight, kg  | 1890 | 1960 | 1940 | 2020   | 1960             |
| Max. roof load, kg   | 75   | 75   | 75   | 75     | 75               |
| Max. payload, kg (dependent on spec.)                        | 591  | 573  | 526  | 540    | 570              |

| EXTERIOR (mm)                       |               | INTERIOR (mm)                              |      |
|-------------------------------------|---------------|--|------|
| A Overall length                    | 4514          | H Front seat max. headroom <sup>(vi)</sup> | 988  |
| B Overall width (exc. wing mirrors) | 1770          | I Front seats width                        | 1402 |
| C Unladen height (exc. roof rails)  | 1452          | J Front seat max. legroom                  | 1057 |
| D Wheelbase length                  | 2640          | K Rear seat max. headroom <sup>(vi)</sup>  | 968  |
| E Front track width                 | 1535          | L Rear seats width                         | 1374 |
| F Rear track width                  | 1531          | M Rear seat max. legroom                   | 873  |
| G Ground to boot base height        | 628 (AWD 663) | N Load length luggage 2 seat mode          | 1766 |
|                                     |               | O Load length luggage 5 seat mode          | 989  |



| PERFORMANCE                | 1.8  | 2.4i |      | T5   |      | T5 AWD |      | 2.0D         |             |
|----------------------------|------|------|------|------|------|--------|------|--------------|-------------|
|                            | Man  | Man  | Auto | Man  | Auto | Man    | Auto | Euro III Man | Euro IV Man |
| Top speed, mph             | 124  | 138  | 134  | 149  | 146  | 143    | 140  | 130          | 130         |
| Acceleration 0-62 mph, sec | 11.0 | 8.3  | 9.0  | 6.9  | 7.3  | 7.2    | 7.6  | 9.6          | 9.6         |
| Drag co-efficient          | 0.32 | 0.32 |      | 0.32 |      | 0.32   |      | 0.32         |             |

| TRANSMISSION              |         |
|---------------------------|---------|
| Manual 2.0D/T5/T5 AWD     | 6 speed |
| Manual 1.8/2.4i           | 5 speed |
| Geartronic 2.4i/T5/T5 AWD | 5 speed |

| TURNING CIRCLE        | 16"         | 17"         | 18"         |
|-----------------------|-------------|-------------|-------------|
| Rack & pinion, m (ft) | 10.6 (34.9) | 10.8 (35.4) | 11.3 (37.1) |

| FUEL CONSUMPTION <sup>(i)</sup>           | 1.8        | 2.4i        |             | T5          |             | T5 AWD      |             | 2.0D         |             |
|---|------------|-------------|-------------|-------------|-------------|-------------|-------------|--------------|-------------|
|   | Man        | Man         | Auto        | Man         | Auto        | Man         | Auto        | Euro III Man | Euro IV Man |
| Urban mpg (l/100km) <sup>(ii)</sup>       | 28.8 (9.8) | 22.6 (12.5) | 21.2 (13.3) | 22.6 (12.5) | 20.3 (13.9) | 20.9 (13.5) | 19.0 (14.9) | 37.2 (7.6)   | 37.2 (7.6)  |
| Extra Urban mpg (l/100km) <sup>(ii)</sup> | 48.7 (5.8) | 41.5 (6.8)  | 41.5 (6.8)  | 42.8 (6.6)  | 39.8 (7.1)  | 38.2 (7.4)  | 37.7 (7.5)  | 61.4 (4.6)   | 58.9 (4.8)  |
| Combined mpg (l/100km) <sup>(ii)</sup>    | 38.7 (7.3) | 32.8 (8.8)  | 30.7 (9.2)  | 32.1 (8.8)  | 29.4 (9.6)  | 29.1 (9.7)  | 27.7 (10.2) | 49.6 (5.7)   | 48.7 (5.8)  |
| CO <sub>2</sub> g/km                      | 174        | 204         | 220         | 209         | 229         | 232         | 243         | 153          | 154         |
| VED (Vehicle Excise Duty) Band            | E          | F           | F           | F           | F           | F           | F           | D            | D           |
| Fuel tank volume, litres (gallons)        | 55 (12.1)  | 62 (13.6)   |             | 62 (13.6)   |             | 58 (12.8)   |             | 55 (12.1)    |             |

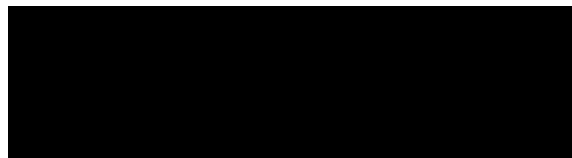
| BRAKES                  | 1.8                     | 2.0D/2.4i               | T5/T5 AWD                 |
|-------------------------|-------------------------|-------------------------|---------------------------|
| Disc diameter mm, front | 15" – 278<br>Ventilated | 16" – 300<br>Ventilated | 16.5" – 320<br>Ventilated |
| Disc diameter mm, rear  | 280                     | 280                     | 280                       |

| LUGGAGE COMPARTMENT                               |                               |
|---|-------------------------------|
| Volume, litres (cu. ft)                           | 417 (14.7) (AWD 362 (12.8))   |
| Volume, rear seats down, litres (cu. ft)          | 717 (25.3) (AWD 708 (25.0))   |
| Volume, rear seats down, to roof, litres (cu. ft) | 1307 (46.2) (AWD 1257 (44.4)) |

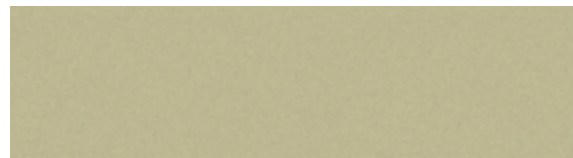
- (i) The Urban fuel consumption figure is based on typical city driving, including starting the car from cold. The Extra Urban figure is based on typical motorway driving and cruising. The Combined figure averages the consumption across both cycles.
- (ii) These results do not express or imply any guarantee of the fuel consumption of a particular car as there are inevitable differences between individual cars of the same model. Additionally driving style, traffic conditions, as well as the age and mileage and standard of maintenance will affect a car's fuel consumption.
- (iii) Figure quoted without sunroof.
- (iv) Unbraked towing weight must not exceed 50% of kerb weight up to a maximum of 700 kg.
- (v) Sport and SE Sport Insurance Groups tbc.

**Notes**

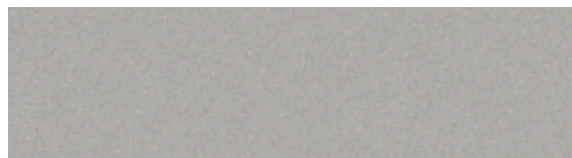
The weight of a vehicle will influence the level of CO<sub>2</sub> emitted. As a result, vehicles with higher levels of specification and factory fit options may emit higher levels of CO<sub>2</sub>. Once a vehicle has been built it will be given its own specific CO<sub>2</sub> emission on which the Vehicle Excise Duty will be charged. A weighbridge must be used to determine specific weights. Data valid for manual transmission unless specified. All measurements in mm. NB Some of the information in this price list may not be correct due to product changes which may have occurred since it was printed. Some of the equipment described or shown may now be available only at extra cost. Before ordering, please ask your Volvo dealer for the latest information. The manufacturer reserves the right to make changes at any time, without notice, to prices, colour, materials, specifications and models. Volvo Car UK Limited, Globe Park, Marlow, Buckinghamshire, SL7 1YQ



019 Black Stone



464 Safari Green pearl\*



426 Silver metallic



465 Cedar Green pearl\*



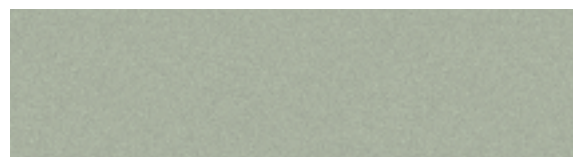
452 Black Sapphire metallic



466 Barents Blue pearl\*



454 Ruby Red pearl\*



471 Willow Green pearl\*



455 Titanium Grey pearl



476 Brilliant Blue pearl\*



459 Dawn Blue pearl\*



477 Inscription™ Electric Silver Coarse Flake metallic\*



462 Flint Grey metallic\*



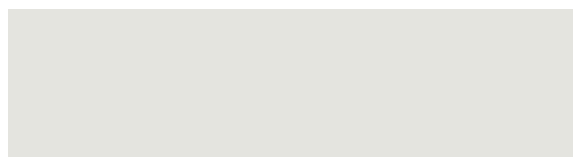
612 Passion Red



463 Blackcurrant pearl\*



613 Deep Blue\*



614 Ice White\*

NB It is not possible to reproduce exact original shades in printed matter. Please ask your dealer to show you samples.  
\* Not available with Sport and SE Sport.

**CARE  
BY VOLVO**

**THE END IS JUST THE BEGINNING**

It's a simple idea; one point of contact for all your car ownership needs – whether it's about finding the right finance deal or who to contact in an emergency. To get the most out of owning your Volvo, trust Care by Volvo.

**STARTING OFF ON THE RIGHT FOOT**

You might be surprised how easy and flexible financing can be. Our range of finance, service and insurance options allows you to budget around one key factor – your lifestyle.

**MAKING LIFE EASIER**

Owning a Volvo should be a safe and enjoyable experience. To ensure it stays that way, we're committed to providing you with the best in support for as long as you own one.

**LOOKING AHEAD**

You'll probably never find out just how good some of these services are. But should the unexpected happen, we'd like to think that you'd be even happier you chose a Volvo.

**FINANCE/LEASE**

As part of Volvo, Volvo Car Finance has developed a series of funding plans that will provide you with maximum choice and flexibility when acquiring a Volvo.

**SERVICE PROGRAMME**

Your Volvo dealer has the unique know-how to tailor a service programme according to Volvo's strict recommendations and guarantees you years of safety and driving pleasure.

**ROADSIDE ASSISTANCE**

Every new car comes with one year's free RAC cover. You'll enjoy full breakdown and recovery assistance, anywhere in Europe, 24 hours a day. You can even extend cover for up to two more years at preferential rates.

**INSURANCE**

Volvo Owners Insurance is designed for Volvo drivers and because we know Volvos inside out, we can offer exactly the right tools and expertise, fitting only genuine Volvo parts by trained Volvo technicians. Because Volvo drivers have an excellent reputation, we can also offer extensive cover at a reasonable price.

**VOLVO ON CALL**

Subscribe to Volvo On Call and you'll never be completely on your own. It's a GPS-based communication system providing 24-hour access to both emergency and roadside assistance wherever you are. See the Volvo On Call brochure for more information.

**WARRANTY**

Every new Volvo comes with comprehensive protection. Our warranty covers the first three years or 60,000 miles, whichever comes first. There's a three year unlimited warranty on the paintwork, and either eight or twelve years against rust perforation. If a component fails due to a defect or material fault, your dealer will swiftly rectify the problem, free of charge.

For tax free sales, including Military, Diplomat and all other Export enquiries, contact Volvo Car UK Tourist & Diplomat Sales or Volvo Car UK British Military Sales on **01707 262 388** or e-mail to [vcukics@volvocars.com](mailto:vcukics@volvocars.com) or [bms@volvocars.com](mailto:bms@volvocars.com)

**WHAT NEXT?** If you'd like to find out more about the range of products and services that make up Care by Volvo, the story continues at [www.volvocars.co.uk](http://www.volvocars.co.uk) Alternatively you can contact your nearest Volvo dealer or request relevant brochures.

(i) Volvo Owners Insurance is underwritten by Royal & Sun Alliance Insurance plc No. 93792. Registered in England and Wales at St Mark's Court, Chart Way, Horsham, West Sussex RH12 1XL. Authorised and regulated by the Financial Services Authority. For your protection telephone calls will be recorded and may be monitored.

NB Some of the information in this brochure may not be correct due to product changes which may have occurred since it was printed. Before ordering, please ask your Volvo dealer for the latest information. The manufacturer reserves the right to make changes at any time, without notice, to prices, colour, materials, specifications and models.



**VOLVO**

Volvo Car UK Limited  
[www.volvocars.co.uk](http://www.volvocars.co.uk)