



VOLVO
XC70 PRICING

VOLVO
for life



THE VOLVO XC70

Do you prefer on-road performance or off-road ability? Thankfully, with the XC70, Volvo has removed the need for this question. The XC70 is perfectly at home on any terrain – and with the help of this price list you can feel perfectly at home in your very own cross country vehicle.

D5

The D5 2.4 litre, turbocharged, in-line, 5 cylinder, common rail diesel engine delivers very low fuel consumption and CO₂ emissions with excellent performance – producing 163 bhp and 340 Nm torque. This extremely advanced diesel engine is made entirely of aluminium giving it a similar weight to a petrol engine. This advanced design combined with second generation electronic common rail fuel injection and the variable blade turbocharger makes it one of the quietest and most advanced diesel engines available on the market.

XC70 SE

The comprehensive standard specification includes electronic climate control, 16" Erinus alloy wheels, 6 x CD radio with Dolby Pro Logic II Surround Sound⁽ⁱⁱ⁾, leather-faced upholstery and steering wheel, electric driver's seat plus all the safety features you would expect from Volvo.

	Basic £	VAT £	Rec Retail Price £	On The Road Price £	On The Road Price € ⁽ⁱ⁾ Euros
PETROL					
2.5T AWD SE	£24,497.87	£4,287.13	£28,785.00	£29,463.00	€44,076.65
DIESEL					
D5 AWD SE	£23,191.49	£4,058.51	£27,250.00	£27,933.00	€41,787.77

XC70 SE LUX

The SE Lux model offers 16" Xenia alloy wheels, electric driver and passenger seats, Bi-Xenon headlamps, headlamp cleaning system, walnut wood trim and heated front seats.

	Basic £	VAT £	Rec Retail Price £	On The Road Price £	On The Road Price € ⁽ⁱ⁾ Euros
PETROL					
2.5T AWD SE Lux	£25,817.02	£4,517.98	£30,335.00	£31,013.00	€46,395.45
DIESEL					
D5 AWD SE Lux	£24,510.64	£4,289.36	£28,800.00	£29,483.00	€44,106.57



YOUR VOLVO	2-3
STANDARD EQUIPMENT	4
OPTIONS	5
UPHOLSTERY	6-7
TECHNICAL SPECIFICATION	8-9
CHOOSE YOUR COLOUR	10
CARE BY VOLVO	11

(i) Euro prices shown are calculated using an exchange rate of 1.496 Euros to the £, as published in the Financial Times on 31st March 2004. Euro prices will be subject to the prevailing exchange rate at the time of purchase. These figures are for information purposes only.

(ii) Dolby and Pro Logic II Surround Sound™ are trademarks of Dolby Laboratories Licensing Corporation.

	SE	SE LUX
SAFETY & SECURITY		
Dual Stage Driver and Passenger Airbags	•	•
SIPS (Side Impact Protection System)	•	•
SIPS Airbags	•	•
IC (Inflatable Curtain)	•	•
WHIPS (Whiplash Protection System) (Front Seats)	•	•
ABS (Anti-lock Brakes) with EBD (Electronic Brake Distribution)	•	•
DSTC (Dynamic Stability and Traction Control) with Electronic Brake Assistance	•	•
5 Three Point Seat Belts	•	•
Seat Belt Pre-tensioners (Front and Rear)	•	•
Head Restraints – All 5 Seats	•	•
ISOFIX Child Seat Preparation	•	•
Anti-theft Alarm including Immobiliser and Panic Function	•	•
Key Integrated Remote Control Central Locking including Fuel Flap with Deadlocking System	•	•
Mass Movement Sensor	•	•
Water Repellent Door Mirror Glass	•	•
Tinted Windows	•	•
Load Cover (Cargo Area) with Load Protection Net (Steel) ⁽ⁱⁱ⁾	•	•
Visible VIN Plate	•	•
Day Running Lights	•	•
Headlamp Levelling System	•	•
High Level LED Brake Light	•	•
Front and Rear Side Marker Illumination	•	•
Home Safe and Approach Lighting	•	•
INTERIOR		
ECC (Electronic Climate Control) with AQS (Air Quality System) and Pollen Filter	•	•
B Pillar Ventilation	•	•
Exterior Temperature Gauge	•	•
Information Centre	•	•
Cruise Control	•	•
Geartronic Transmission (D5 only)	•	•
Front and Rear Electric Windows	•	•
Electrically Adjustable and Heated Door Mirrors	•	•
Electric Folding Door Mirrors with Ground Lights	•	•
Illuminated Driver and Passenger Vanity Mirrors	•	•
Front and Rear Reading Lamps	•	•
Autodimming Rear View Mirror	•	•
Cupholder in Dashboard ⁽ⁱⁱⁱ⁾ , Two Cupholders in Tunnel Console ^(iv)	•	•
Grocery Bag Holder (Luggage Area) ^(v)	•	•
12v Socket (Luggage Area)	•	•
Rear Waste Bag/Bottle Holder	•	•
Electric Driver's Seat (with Memory) and Door Mirror Memory	•	•
Electric Driver and Passenger Seats (with Driver's Memory) and Door Mirror Memory	•	•
Height Adjustable Driver and Passenger Seats	•	•
Forward Folding Front Passenger Seat	•	•
Two Position Rear Seat Backrest (for Flexible Load Carrying)	•	•
Heated Front Seats	•	•
Front Centre Armrest with Grab Handle	•	•
Leather Steering Wheel (Colour Co-ordinated), Gear Knob and Handbrake Lever	•	•
Steering Wheel Remote Audio Controls	•	•
Height and Reach Adjustable Steering Column	•	•
Illuminated Ignition Lock	•	•
Mesh Aluminium Trim	•	•
Walnut Wood Trim	•	•
Leather-faced Upholstery	•	•
Textile Floor Mats	•	•
High Performance Sound Audio System HU-850 RDS 6 x CD Radio with Dolby Pro Logic II Surround Sound ^(vi) with 4 x 50W Amplifier and 9 Speakers	•	•
Premium Sound Audio System HU-850 RDS 6 x CD Radio with Dolby Pro Logic II Surround Sound ^(vi) with 4 x 75W Amplifier and 11 Speakers	•	•
Electronic Accessory Preparation	•	•
EXTERIOR		
16" Erinus Alloy Wheels – 215/65 R16 98H Tyres	•	•
16" Xenia Alloy Wheels – 215/65 R16 98H Tyres	•	•
Locking Wheels Nuts	•	•
Tempa Spare Wheel	•	•
Front Fog Lights	•	•
Bi-Xenon Headlamps with Headlamp Cleaners	•	•
Rear Wash/Wipe with Interval Function	•	•
Rain Sensor – Automatic Windscreen Wiper Activation	•	•
Roof Rails	•	•
Comfort Chassis	•	•
Haldex AWD System	•	•
Load Compensating Suspension	•	•
Towbar preparation	•	•
Skid Plate Protection (Front and Rear)	•	•
Stone Grey or Brown Bumpers with Wheel Arch Extensions	•	•
Mudflaps (Rear)	•	•

	Basic £	VAT £	Rec Retail Price £	Rec Retail Price € ⁽ⁱ⁾	SE	SE LUX
SAFETY & SECURITY						
Passenger Airbag Cut-Off Switch	£21.28	£3.72	£25.00	€37.40	o	o
Water Repellent Laminated Side Windows	£331.91	£58.09	£390.00	€583.44	o	o
Dark Tinted Rear Windows (Rear Windows and Rear Screen – includes Laminated Side Luggage Area Windows)	£212.77	£37.23	£250.00	€374.00	o	o
Load Protection Net (One Piece)	–	–	–	–	nco	nco
Inclination Sensor	£106.38	£18.62	£125.00	€187.00	o	o
ISOFIX Attachment (Rear Seats)	£23.83	£4.17	£28.00	€41.89	o	o
Power Child Locks (Rear Doors)	£63.83	£11.17	£75.00	€112.20	o	o
Integrated Booster Cushions x 2	£221.28	£38.72	£260.00	€388.96	o	o
INTERIOR						
Geartronic Transmission	£1,063.83	£186.17	£1,250.00	€1,870.00	o	o
Speed Dependent Steering System	£191.49	£33.51	£225.00	€336.60	o	o
Electric Glass Tilt and Slide Sunroof	£723.40	£126.60	£850.00	€1,271.60	o	o
Front and Rear Ashtray, Cupholder and Front Cigarette Lighter ^(iv)	–	–	–	–	nco	nco
Rear Cupholders (Armrest) ^(vii)	£29.79	£5.21	£35.00	€52.36	o	o
Foldable Table and Dual Cupholders – Rear ^(viii)	£63.83	£11.17	£75.00	€112.20	o	o
Versatile Split Folding Rear Seat (40%/20%/40%) ^(viii)	£127.66	£22.34	£150.00	€224.40	o	o
First Aid Kit	£21.28	£3.72	£25.00	€37.40	o	o
Electric Driver and Passenger Seats (with Driver's Memory) and Door Mirror Memory	£510.64	£89.36	£600.00	€897.60	o	•
Rear Facing Seats in Cargo Area ^(ix,vi,ix,xi)	£425.53	£74.47	£500.00	€748.00	o	o
Heated Front Seats	£191.49	£33.51	£225.00	€336.60	o	•
3-Spoke Wood/Leather Steering Wheel	£204.26	£35.74	£240.00	€359.04	o	o
Walnut Wood Trim	£212.77	£37.23	£250.00	€374.00	o	•
Black Mesh Trim	–	–	–	–	nco	nco
Premium Sound Audio System HU-850 RDS 6 x CD Radio with Dolby Pro Logic II Surround Sound ^(vi) , 4 x 75W Amplifier and 11 Speakers	£212.77	£37.23	£250.00	€374.00	o	•
Sub Woofer Under Load Floor Area ^(vi)	£153.19	£26.81	£180.00	€269.28	o	o
Preparation for Accessory 10 x CD Changer and Digital Jukebox	£29.79	£5.21	£35.00	€52.36	o	o
RTI Navigation System, Remote Control with Europe DVD Map, without TV	£1,872.34	£327.66	£2,200.00	€3,291.20	o	o
RTI Navigation System, Remote Control with Europe DVD Map and TV	£2,297.87	£402.13	£2,700.00	€4,039.20	o	o
Dual Band Integrated GSM Telephone ⁽ⁱⁱⁱ⁾	£595.74	£104.26	£700.00	€1,047.20	o	o
EXTERIOR						
Black Paint (Solid)	£212.77	£37.23	£250.00	€374.00	o	o
Metallic/Pearlescent Paint	£468.09	£81.91	£550.00	€822.80	o	o
16" Erinus Alloy Wheels – 215/65 R16 98H Tyres	–	–	–	–	•	nco
16" Xenia Alloy Wheels – 215/65 R16 98H Tyres	–	–	–	–	nco	•
Headlamp Cleaning System	£191.49	£33.51	£225.00	€336.60	o	•
Bi-Xenon Headlamps with Cleaning System	£595.74	£104.26	£700.00	€1,047.20	o	•
Rear Park Assist	£289.36	£50.64	£340.00	€508.64	o	o
Rear Spoiler	£212.77	£37.23	£250.00	€374.00	o	o
Cross Bars for Roof Rails	£97.87	£17.13	£115.00	€172.04	o	o
Active Four-C Chassis (Continuously Controlled Chassis Concept)	£936.17	£163.83	£1,100.00	€1,645.00	o	o
Engine Badge Deletion	–	–	–	–	nco	nco



16" Erinus



16" Xenia

	Basic £	VAT £	Rec Retail Price £	Rec Retail Price € ⁽ⁱ⁾	SE	SE LUX
WINTER PACK						
Heated Front Seats and Headlamp Cleaning System	£246.81	£43.19	£290.00	€433.84	o	•
BI-XENON PACK						
Bi-Xenon Headlamps, Headlamp Cleaning System and Heated Front Seats	£646.81	£113.19	£760.00	€1,136.96	o	o
FAMILY PACK						
Foldable Table and Dual Cupholders (Rear), Power Child Locks (Rear Doors) and Integrated Booster Cushions x 2	£255.32	£44.68	£300.00	€448.80	o	o
COMMUNICATIONS PACK 1						
Volvo On Call ⁽ⁱⁱⁱ⁾ , Dual Band Integrated GSM Telephone ⁽ⁱⁱⁱ⁾ , RTI Navigation System, Remote Control with Europe DVD Map	£2,255.32	£394.68	£2,650.00	€3,964.40	o	o
COMMUNICATIONS PACK 2						
Volvo On Call ⁽ⁱⁱⁱ⁾ , Dual Band Integrated GSM Telephone ⁽ⁱⁱⁱ⁾ , RTI Navigation System, Remote Control with Europe DVD Map and TV	£2,595.74	£454.26	£3,050.00	€4,562.80	o	o

• = Standard o = Optional n/a = not available nco = no cost option i.e. a customer can upgrade to that option without paying any extra money u (£) = upgrade

- (i) Euro prices shown are calculated using an exchange rate of 1.496 Euros to the £ as published in the Financial Times on 31st March 2004. Euro prices will be subject to the prevailing exchange rate at the time of purchase. These figures are for information purposes only.
- (ii) Load Cover and Load Protection Net (steel) not supplied when the Rear Facing Seats in Cargo Area are ordered.
- (iii) Cupholder in Dashboard is removed when Dual Band Integrated GSM Telephone is ordered.
- (iv) Two Cupholders in Tunnel Console are removed when Front and Rear Ashtray, Cupholder in Tunnel Console and Front Cigarette Lighter are ordered.
- (v) Dolby and Pro Logic II Surround Sound™ are trademarks of Dolby Laboratories Licensing Corporation.
- (vi) Cannot be ordered in conjunction with Rear Facing Seats in Cargo Area.
- (vii) Volvo On Call includes: start up fee, 1 year's free subscription, 1x SOS Emergency call, 1x Breakdown Call and 25 minutes free.
- (viii) Foldable Table and Dual Cupholders – Rear and Versatile Split Folding Rear Seat (40%/20%/40%) cannot be combined.
- (ix) Rear Cupholders (Armrest) can only be ordered with a 60%/40% split rear seat.
- (x) Grocery Bag Holder is removed when Rear Facing Seats in Cargo Area are ordered.
- (xi) Rear Facing Seats in Cargo Area cannot be ordered as a factory fit option with D5 AWD Geartronic. Available as an Accessory only.

ACCESSORIES	Basic £	VAT £	Rec Retail Price £	Rec Retail Price € ⁽ⁱ⁾
EXTERIOR ACCESSORIES (PRICES EXCLUDE FITTING UNLESS SHOWN OTHERWISE)				
Bike Rack (down tube clamp)	£51.06	£8.94	£60.00	€89.76
Bike Rack (servo lift)	£80.85	£14.15	£95.00	€142.12
Front Park Assist	£289.36	£50.64	£340.00	€508.64
Mud Flaps (rear)	£21.28	£3.72	£25.00	€37.40
Rear Spoiler ⁽ⁱⁱ⁾ (fitted price only available on a limited number of colours)	£254.47	£44.53	£299.00	€447.31
Roof Protection Ribs ⁽ⁱⁱⁱ⁾	£83.40	£14.60	£98.00	€146.61
Roofbox – Sport Time 50 (310 litre volume)	£187.23	£23.77	£220.00	€329.12
Roofbox – Weekender (370 litre volume)	£212.77	£37.23	£250.00	€374.00
Roofbox – Dynamic 65 (405 litre volume)	£229.79	£40.21	£270.00	€403.92
Roofbox – Sport Time 20 (405 litre volume)	£263.83	£46.17	£310.00	€463.76
Roofbox – Experience (450 litre volume)	£272.34	£47.66	£320.00	€478.72
Roofbox – Dynamic 85 (510 litre volume)	£297.87	£52.13	£350.00	€523.60
Side Scuff Plate		Available late 2004		
Ski/Snowboard Carrier with Slide Rail	£59.58	£10.42	£70.00	€104.72
Skidplate (rear)	£40.85	£7.15	£48.00	€71.81
Snow Chain – standard version (variety available)	£119.15	£20.85	£140.00	€209.44
Towbar – Fixed Type with 7 Pin Electrics ^(iv)	£227.52	£39.82	£267.34	€399.95
Towbar – Fixed Type with 13 Pin Electrics ^(iv)	£281.93	£49.34	£331.27	€495.58
Towbar – Detachable Type with 7 Pin Electrics ^(iv)	£291.35	£50.99	£342.34	€512.15
Towbar – Detachable Type with 13 Pin Electrics ^(iv)	£345.76	£60.51	£406.27	€607.78
Towbar – Flange Type with 7 Pin Electrics ^(iv)	£244.54	£42.79	£287.33	€429.85
Towbar – Flange Type with 13 Pin Electrics ^(iv)	£295.54	£51.72	£347.26	€519.51
INTERIOR ACCESSORIES				
Cooler/Hot Box (excludes price for power cable)	£68.09	£11.92	£80.00	€119.68
Fire Extinguisher (excludes installation kit)	£21.28	£3.72	£25.00	€37.40
Hands-free Phone System ⁽ⁱⁱ⁾		Available late 2004		
Hands-free Phone System (inc Audio Mute Function) ⁽ⁱⁱ⁾		Available late 2004		
Integrated Coolbox ⁽ⁱⁱⁱ⁾	£178.73	£31.28	£210.00	€314.16
Integrated Storage Bag ⁽ⁱⁱⁱ⁾	£59.58	£10.43	£70.00	€104.72
Load Liner – full cargo area	£55.32	£9.68	£65.00	€97.24
Load Securing Net (cargo area)	£59.58	£10.43	£70.00	€104.72
Net Pocket (cargo area)	£25.53	£4.47	£30.00	€44.88
Padded Neck Cushion	£17.02	£2.98	£20.00	€29.92
PC Table for Laptop Computers	£59.58	£10.43	£70.00	€104.72
Rear Facing Seats in Cargo Area ^(iii,v)	£553.19	£96.81	£650.00	€972.40
RSE (Rear Seat Entertainment) (2 x 6" Screens in Headrest)	£2,127.66	£372.34	£2,500.00	€3,740.00
Rubber Floor Mats (set of four)	£63.83	£11.17	£75.00	€112.20
Steel Safety Grille (for behind second row seats)	£119.15	£20.85	£140.00	€209.44
Table and Seat Cushions	£110.64	£19.36	£130.00	€194.48
Table (rear centre armrest)	£17.02	£2.98	£20.00	€29.92
CHILD ACCESSORIES				
Child Booster Cushion	£29.79	£5.21	£35.00	€52.36
Child Booster Backrest (to go with above)	£29.79	£5.21	£35.00	€52.36
CROSS COUNTRY PACK^(iv)				
Roof Protection Ribs, Rear Skid Plate, Integrated Cool Box, Rear Spoiler and Rear Mudflaps	£557.45	£97.55	£655.00	€979.88

(i) Euro prices shown are calculated using an exchange rate of 1.496 Euros to the £, as published in the Financial Times on 31st March 2004.

Euro prices will be subject to the prevailing exchange rate at the time of purchase. These figures are for information purposes only.

(ii) Indicates total fitted price post registration. At participating dealers only. To find out who is a participating dealer contact the Volvo Helpline Number on 0800 400 430.

(iii) Must have 40%/20%/40% split rear seats.

(iv) Grocery Bag Holder, Load Cover and Load Protection Net (Steel) are removed when this item is ordered. Cannot be ordered in conjunction with Subwoofer.

(v) Denotes the colour of the door panels above the Inlay Trim.

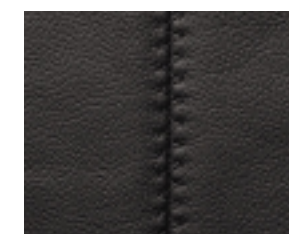
For further information and a complete list of all Volvo Accessories, just take a look at the new Accessory website at www.volvocars.co.uk/accessories

UPHOLSTERY	Code	Upholstery Colour	Dashboard Top/ Door Panel Colour ^(v)	Door Insert Colour	Headliner Colour
Leather-faced	B951	Light Sand	Beige	Light Sand	Light Sand
	B970	Off Black	Off Black	Off Black	Granite
	B980	Oak	Oak	Oak	Arena
	B984	Brown	Oak	Brown	Arena

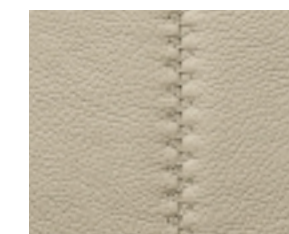
UPHOLSTERY



Leather-faced Oak (B980)



Leather-faced Off Black (B970)

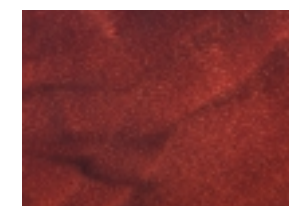


Leather-faced Light Sand (B951)



Leather-faced Brown (B984)

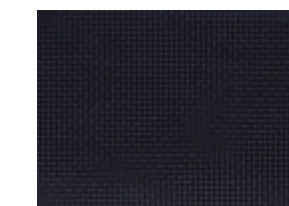
INTERIOR INLAYS



Walnut Wood



Mesh Aluminium



Black Mesh



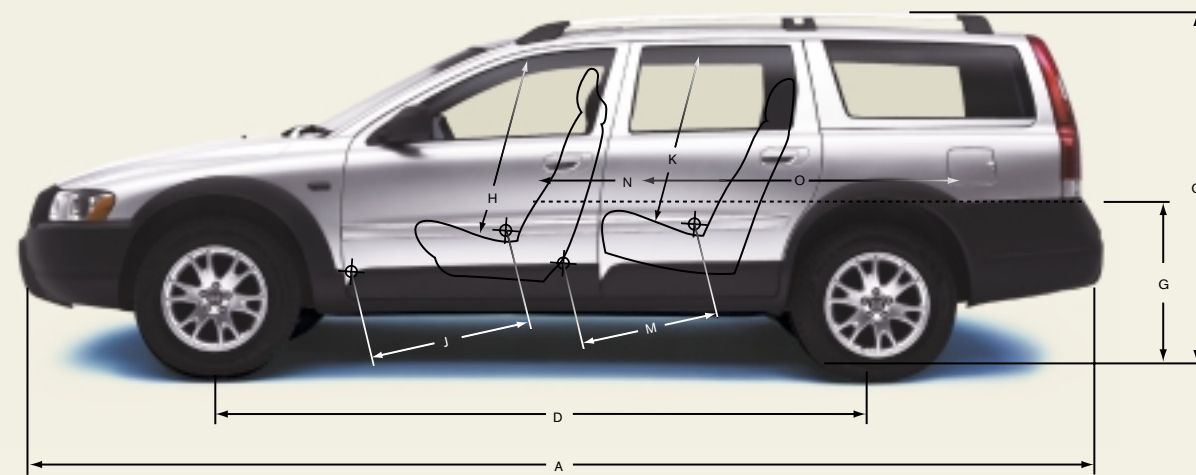
ENGINE	2.5T	D5
Configuration	Transverse – 20 valve	Transverse – 20 valve
Cylinders	5	5
Engine capacity, cc	2521	2401
Bore x stroke, mm	83 x 93	81 x 93
Max. output ECE, bhp/kw/rpm	210/154/5000	163/120/4000
Max. torque ECE, Nm/rpm	320/1500-4500	340/1750-3000
Octane rating	95-98 ⁽ⁱⁱⁱ⁾ RON unleaded	Turbo Diesel
Fuel system	Multipoint fuel injection	Multipoint fuel injection
Compression ratio	9.0:1	18.0:1

PERFORMANCE	2.5T Manual	2.5T Geartronic	D5 Manual	D5 Geartronic
Top speed, mph	130	130	124	121
Acceleration 0-62mph, sec	8.1	8.5	10.5	11.5

WEIGHTS	2.5T	D5
Min. kerb weight, kg (actual kerb weight dependent on spec.)	1679	1748
Max. possible towing weight braked, kg	1800	1800
Max. towing weight unbraked approx, kg ^(iv)	750	750
Max. total weight, kg	2220	2220
Max. roof load, kg	100	100
Max. payload, kg	541	472

TRANSMISSION	All models
Manual	5 (D5 6-speed)
Geartronic	5

POWER STEERING SYSTEM	All models
(rack & pinion) Turning circle, m (ft) 205 – (16") section tyres	11.9 (39'0")



EXTERIOR (mm)	INTERIOR (mm)		
A Overall length	4733	H Front seat max. headroom ^(v)	997
B Overall width (exc. wing mirrors)	1860	I Front seats width	1427
C Unladen height	1562	J Front seat max. legroom	1082
D Wheelbase length	2763	K Rear seat max. headroom ^(v)	988
E Front track width	1611	L Rear seats width	1419
F Rear track width	1548	M Rear seat max. legroom	894
G Ground to boot base height	647	N Load length luggage 2 seat mode ^(vi)	1848
		O Load length luggage 5 seat mode ^(vi)	1077



FUEL CONSUMPTION ⁽ⁱ⁾	2.5T Manual	2.5T Geartronic	D5 Manual	D5 Geartronic
(Government Approved) Mpg (l/100 km) ⁽ⁱⁱ⁾				
Urban	20.0 (14.1)	18.1 (15.6)	28.5 (9.9)	25.2 (11.2)
Extra Urban	35.8 (7.9)	33.2 (8.5)	46.3 (6.1)	42.2 (6.7)
Combined	27.7 (10.2)	25.4 (11.1)	37.7 (7.5)	33.6 (8.4)
CO ₂ g/km	244	266	199	223
VED (Vehicle Excise Duty) Band	D	D	D	D

BRAKES	All models
Disc diameter mm, front	16" – 305
Disc diameter mm, rear	16" – 288

LUGGAGE COMPARTMENT TO GLASS LINE	To Glass Line	To Roof
Volume, litres (cu. ft)	485 (17.1)	
Volume, rear seats down, litres (cu. ft)	745 (26.3)	1641 (58.0)

GROUND CLEARANCE	All models
Vehicle ground clearance (mm)	209
with 2 persons (mm)	193

PERFORMANCE	All models
Drag co-efficient	0.34

FUEL TANK	All models
Volume, litres (gallons)	68 (15.0)

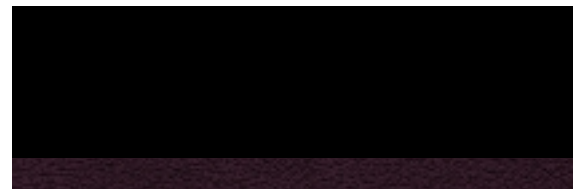
- (i) These results do not express or imply any guarantee of the fuel consumption of a particular car as there are inevitable differences between individual cars of the same model. Additionally driving style, traffic conditions, as well as the age and mileage and standard of maintenance will affect a car's fuel consumption.
- (ii) The Urban fuel consumption figure is based on typical city driving, including starting the car from cold. The Extra Urban figure is based on typical motorway driving and cruising. The Combined figure averages the consumption across both cycles.
- (iii) For best performance and lowest fuel consumption 98 RON is recommended. 95 RON can be used for normal driving.
- (iv) Unbraked towing weight must not exceed 50% of kerb weight up to a maximum of 750 kg.
- (v) Figure quoted without sunroof.
- (vi) Measurement taken at height of floor covering.

Notes
The weight of the vehicle will influence the level of CO₂ emitted. As a result, vehicles with higher levels of specification and factory fit options may emit higher levels of CO₂. Once a vehicle has been built it will be given its own specific CO₂ emission on which the Vehicle Excise Duty will be charged.
A weighbridge must be used to determine specific weights.
Data valid for manual transmission unless specified.
All measurements in mm.

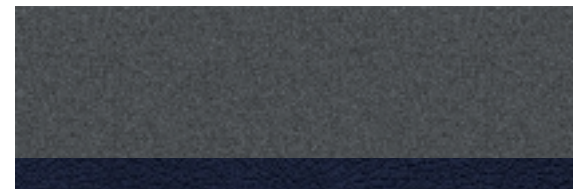
NB Some of the information in this price list may not be correct due to product changes which may have occurred since it was printed. Some of the equipment described or shown may now be available at extra cost. Before ordering, please ask your Volvo dealer for the latest information. The manufacturer reserves the right to make changes at any time, without notice, to price, colour, materials, specifications and models.
Volvo Car UK Limited, Globe Park, Marlow, Buckinghamshire, SL7 1YQ

INSURANCE GROUPS	2.5T	D5
Volvo XC70	15 E	13 E

E = Exceeds security requirements for model concerned and group rating has been reduced.



019 Black Stone



455 Titanium Grey pearl



426 Silver metallic



456 Crystal Green pearl



446 Ash Gold pearl



465 Cedar Green pearl



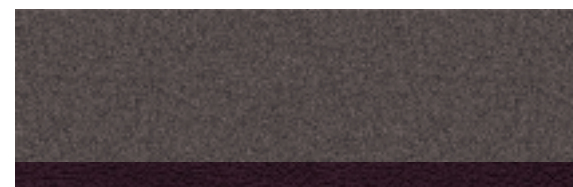
449 Mistral Green metallic



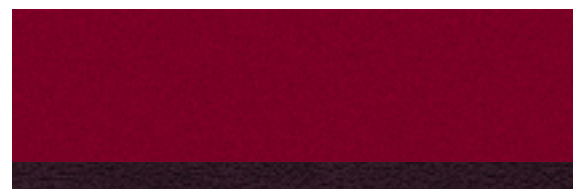
466 Barents Blue pearl



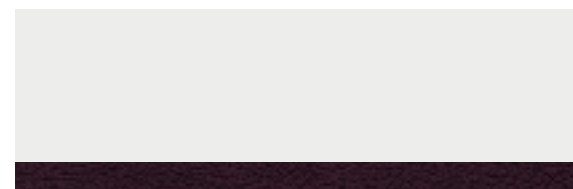
452 Black Sapphire metallic



468 Lava Sand pearl



454 Ruby Red pearl



614 Ice White

The bumpers and wheel arch extensions are in stone grey or brown, depending on your choice of exterior colour – please see your dealer for details.



NB It is not possible to reproduce exact original shades in printed matter. Please ask your Volvo dealer to show you samples.

CARE
BY VOLVO

IT'S SIMPLICITY ITSELF. ONE POINT OF CONTACT FOR ALL YOUR CAR OWNERSHIP NEEDS. WHETHER IT'S ABOUT FINDING THE RIGHT FINANCE DEAL OR WHO TO CONTACT IN AN EMERGENCY. TRUST CARE BY VOLVO TO ENJOY A VERY SPECIAL CAR OWNERSHIP.

STARTING OFF ON THE RIGHT FOOT
You'll be surprised how easy and flexible financing can be. Our range of finance, service and insurance options allow you to budget around one key factor – your lifestyle.

MAKING LIFE EASIER
Owning a Volvo is all about discovering the safest, most exciting, driving experience. To ensure it always stays that way, we're committed to providing you with the best in aftersales support.

LOOKING AHEAD
You'll probably never find out just how good some of our services are, but should the unexpected happen you'll discover yet more reasons why buying a Volvo was the right choice.

FINANCE/LEASE

As part of Volvo, Volvo Car Finance has developed a series of finance plans that will provide you with maximum choice and flexibility when acquiring a Volvo.

SERVICE PROGRAMME

Your Volvo dealer has the unique know-how to tailor a service programme according to Volvo's strict recommendations and guarantees you years of safety and driving pleasure.

ROADSIDE ASSISTANCE

Every new car comes with one year's free RAC cover. You'll enjoy full breakdown and recovery assistance, anywhere in Europe, 24 hours a day. You can even extend cover for up to two more years at preferential rates.

INSURANCE

Statistics show Volvo drivers have fewer accidents. That means Volvo Owners Insurance can offer competitive premiums with tailored protection and exclusive benefits. Operated in partnership with The Royal & SunAlliance, one telephone call even deals with all arrangements for any claim. Call direct on 0800 238 239 to obtain a free no obligation quote⁽ⁱ⁾.

WARRANTY

Every new Volvo comes with comprehensive protection. Our warranty covers the first three years or 60,000 miles, whichever comes first. There's a three year unlimited warranty on the paintwork, and a full eight years against rust perforation. If a component fails due to a defect or material fault, your dealer will swiftly rectify the problem, free of charge.

All 'On The Road' prices quoted in this price list include Volvo standard national delivery charge, inclusive of number plates, at £480 and the VED (Vehicle Excise Duty) car tax effective from 1st March 2000. The 'On The Road' price also includes a £38 vehicle first registration fee (as set by the government), effective since 1st April 1998 (excludes Channel Islands and Isle of Man). Retail prices quoted do not include these additions.

For tax free sales, including Military, Diplomat and all other Export enquiries, contact Volvo Car UK Ltd (Military, Diplomat and International Customer Sales) on 01707 262388, e-mail to vcuktds@volvocars.com or bms@volvocars.com

WHAT NEXT? If you'd like to find out more about the range of products and services that make up Care by Volvo, the story continues at www.volvocars.co.uk

Alternatively you can contact your nearest Volvo dealer or request relevant brochures.

(i) Volvo Owners Insurance is underwritten by Royal & Sun Alliance Insurance plc No. 93792. Registered in England and Wales at St Mark's Court, Chart Way, Horsham, West Sussex RH12 1XL. Member of the General Insurance Standards Council. For your protection telephone calls will be recorded and may be monitored.

VOLVO

Volvo Car UK Limited
www.volvocars.co.uk