

The comprehensive standard specification includes electronic climate control, 16" Mimas alloy wheels (16" Sirius – 2.4T/2.5T AWD), CD player and 8 speakers, STC (DSTC 2.4T/2.5T AWD), cruise control plus all the safety features you would expect from Volvo.

	Basic £	VAT £	Rec Retail Price £	On The Road Price £	On The Road Price w* Euros
<b>PETROL</b>					
2.4 (140 bhp) S	£18,382.98	£3,217.02	£21,600.00	£22,260.00	€33,924.24
2.4 (170 bhp) S	£19,574.47	£3,425.53	£23,000.00	£23,660.00	€36,057.84
2.4 T S	£21,446.81	£3,753.19	£25,200.00	£25,860.00	€39,410.64
2.5 T AWD S	£22,412.77	£3,922.23	£26,335.00	£26,995.00	€41,140.38
<b>DIESEL</b>					
D5 S	£19,885.11	£3,479.89	£23,365.00	£24,020.00	€36,606.48
D5 AWD S (Geartronic)	£21,914.89	£3,835.11	£25,750.00	£26,410.00	€40,248.84
<b>BI-FUEL</b>					
2.4 Bi-Fuel (LPG <sup>^</sup> ) S <sup>†</sup>	£20,255.32	£3,544.68	£23,800.00	£23,331.60	€35,557.36
2.4 Bi-Fuel (CNG <sup>#</sup> ) S <sup>†</sup>	£20,936.17	£3,663.83	£24,600.00	£23,703.09	€36,123.51

The SE model offers electric driver's seat, Leather-faced upholstery, 17" Amalthea alloy wheels, 4 x CD player with Dolby Pro Logic Surround Sound™~ and 9 speakers.

	Basic £	VAT £	Rec Retail Price £	On The Road Price £	On The Road Price w* Euros
<b>PETROL</b>					
2.4 (140 bhp) SE	£20,170.21	£3,529.79	£23,700.00	£24,360.00	€37,124.64
2.4 (170 bhp) SE	£21,361.70	£3,738.30	£25,100.00	£25,760.00	€39,258.24
2.4 T SE	£22,978.72	£4,021.28	£27,000.00	£27,660.00	€42,153.84
2.5 T AWD SE	£23,944.68	£4,190.32	£28,135.00	£28,795.00	€43,883.58
T5 SE	£24,808.51	£4,341.49	£29,150.00	£29,810.00	€45,430.44
<b>DIESEL</b>					
D5 SE	£21,672.34	£3,792.66	£25,465.00	£26,120.00	€39,806.88
D5 AWD SE (Geartronic)	£23,702.13	£4,147.87	£27,850.00	£28,510.00	€43,449.24
<b>BI-FUEL</b>					
2.4 Bi-Fuel (LPG <sup>^</sup> ) SE <sup>†</sup>	£21,851.06	£3,823.94	£25,675.00	£25,206.60	€38,414.86
2.4 Bi-Fuel (CNG <sup>#</sup> ) SE <sup>†</sup>	£22,531.91	£3,943.09	£26,475.00	£25,578.09	€38,981.01

\* Euro prices shown are for information only and are calculated using an exchange rate of 1.524 Euros to the £, as published in the Financial Times on 1st July 2002.

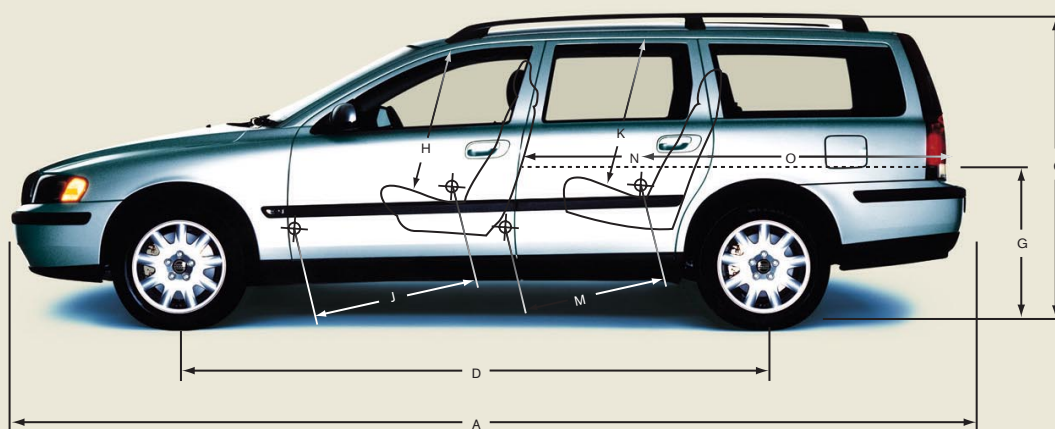
<sup>^</sup> Liquefield Petroleum Gas.

<sup>#</sup> Compressed Natural Gas.

<sup>†</sup> The 'On The Road' price includes a subsidy of £1,123.40 on LPG and £1,531.91 on CNG, taking fully into account any PowerShift grants available. Conditions apply - please see dealer for details.

~Dolby and Pro Logic Surround Sound™ are trademarks of Dolby Laboratories Licensing Corporation.

ENGINE	2.4 (140 bhp)	2.4 (170 bhp)	2.5T AWD	2.4T	D5	T5	V70 2.4 Bi-Fuel	(LPG <sup>^</sup> ) V70 2.4 Bi-Fuel (CNG#)
Configuration	Transverse – 20 valve	Transverse – 20 valve	Transverse – 20 valve	Transverse – 20 valve	Transverse – 20 valve	Transverse – 20 valve	Transverse – 20 valve	Transverse – 20 valve
Cylinders	5	5	5	5	5	5	5	5
Engine capacity, cc	2435	2435	2521	2435	2401	2319	2435	2435
Bore x Stroke, mm	83 x 90	83 x 90	83 x 93	83 x 90	81 x 93	81 x 90	83 x 90	83 x 90
Max. output ECE, bhp/kw/rpm	140/103/4500	170/125/6000	210/154/5000	200/147/6000	163/120/4000	250/184/5200	140/103/5100 LPG 140/103/4500 Petrol	140/103/5800 CNG 140/103/4500 Petrol
Max. torque ECE, Nm/rpm	220/3300	225/4500	320/1500-4500	285/1800-5000	340/1750-3000	330/2400-5200	214/4500	192/4500
Octane rating	95-97 RON unleaded	95-97 RON unleaded	95-97 RON unleaded	95-97 RON unleaded	Turbo Diesel	95-97 RON unleaded	95-97 RON unleaded	95-97 RON unleaded
Fuel system	Multipoint fuel injection	Multipoint fuel injection	Multipoint fuel injection	Multipoint direct fuel injection	Multipoint fuel injection	Multipoint direct fuel injection	Multipoint fuel injection	Multipoint fuel injection
Compression ratio	10.3:1	10.3:1	9.0:1	9.0:1	18.0:1	8.5:1	10.3:1	10.3:1



PERFORMANCE	2.4 (140 bhp)		2.4 (170 bhp)		2.5T AWD		2.4T		D5		D5 AWD		T5		V70 2.4 Bi-Fuel (LPG <sup>^</sup> )	V70 2.4 Bi-Fuel (LPG <sup>^</sup> )	V70 2.4 Bi-Fuel (CNG#)	V70 2.4 Bi-Fuel (CNG#)
	Man	Auto	Man	Auto	Man	G/t#	Man	G/t#	Man	Auto	G/t#	Man	G/t#	Man	Auto	Man	Auto	
Top speed, mph	127	124	137	134	140	137	140	137	130	130	124	155	150	127	124	127	124	124
														LPG	LPG	CNG	CNG	CNG
														127	124	127	124	124
														Petrol	Petrol	Petrol	Petrol	Petrol
Acceleration 0-62 mph, sec	10.5	11.4	9.0	9.9	7.6	8.0	7.9	8.3	9.8	10.2	11.3	7.1	7.5	10.6	11.5	11.0	11.9	11.9
														LPG	LPG	CNG	CNG	CNG
														10.5	11.4	10.5	11.4	11.4
														Petrol	Petrol	Petrol	Petrol	Petrol

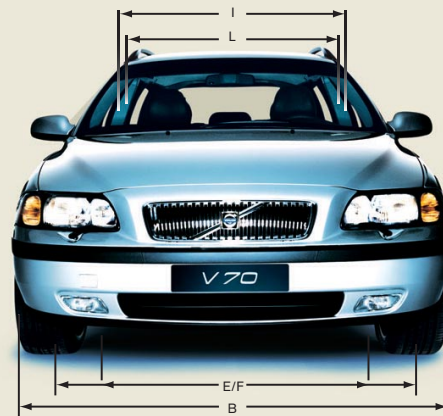
PERFORMANCE	2.4 (140 bhp)		2.4 (170 bhp)		2.5T AWD		2.4T		D5		D5 AWD		T5		V70 2.4 Bi-Fuel (LPG <sup>^</sup> )	V70 2.4 Bi-Fuel (LPG <sup>^</sup> )	V70 2.4 Bi-Fuel (CNG#)	V70 2.4 Bi-Fuel (CNG#)
	Man	Auto	Man	Auto	Man	G/t#	Man	G/t#	Man	Auto	G/t#	Man	G/t#	Man	Auto	Man	Auto	
(Government Approved) Mpg (l/100km)* (m <sup>3</sup> /100km) LPG																		
Urban	22.4 (12.6)	20.6 (13.7)	22.1 (12.8)	20.3 (13.9)	20.2 (14.0)	19.2 (14.7)	22.4 (12.6)	18.7 (15.1)	31.4 (9.0)	25.2 (11.2)	25.0 (11.3)	22.4 (12.6)	18.5 (15.3)	23.0 (12.3) P	19.5 (14.5) P	22.4 (12.6) P	19.9 (14.2) P	19.9 (14.2) P
														17.2 (16.4) LPG	14.8 (19.0) LPG	21.2 (13.3) CNG	19.0 (14.9) CNG	19.0 (14.9) CNG
Extra Urban	40.4 (7.0)	37.7 (7.5)	38.7 (7.3)	37.2 (7.6)	35.8 (7.9)	33.2 (8.5)	38.2 (7.4)	35.3 (8.0)	52.3 (5.4)	44.1 (6.4)	40.9 (6.9)	37.7 (7.5)	34.4 (8.2)	38.7 (7.3) P	36.7 (7.7) P	40.4 (7.0) P	35.8 (7.9) P	35.8 (7.9) P
														29.1 (9.7) LPG	26.9 (10.5) LPG	37.7 (7.5) CNG	36.2 (7.8) CNG	36.2 (7.8) CNG
Combined	31.0 (9.1)	28.8 (9.8)	30.4 (9.3)	28.5 (9.9)	27.7 (10.2)	26.2 (10.8)	30.4 (9.3)	26.6 (10.6)	42.2 (6.7)	34.9 (8.1)	33.2 (8.5)	30.1 (9.4)	26.2 (10.8)	31.0 (9.1) P	27.7 (10.2) P	31.0 (9.1) P	27.7 (10.2) P	27.7 (10.2) P
														23.2 (12.2) LPG	20.8 (13.6) LPG	29.4 (9.6) CNG	27.2 (10.4) CNG	27.2 (10.4) CNG
CO <sup>2</sup> g/km	217	235	221	237	244	258	222	252	177	215	226	225	258	219 – P 197 – LPG	244 – P 221 – LPG	219 – P 171 – CNG	244 – P 186 – CNG	244 – P 186 – CNG
VED (Vehicle Excise Duty) Band	E	E	E	E	E	E	E	E	D	E	E	E	E	E	E	E	D	E

<sup>^</sup> For best performance and lowest fuel consumption 98 RON is recommended. 95 RON can be used for normal driving. # G/t = Geartronic

INSURANCE GROUPS	2.4 (140 bhp)	2.4 (170 bhp)	2.5T AWD	2.4T	D5	D5 AWD	T5	V70 2.4 Bi-Fuel (LPG <sup>^</sup> )	V70 2.4 Bi-Fuel (CNG <sup>#</sup> )
Volvo V70	13	13	TBC	14	13	TBC	16	13	13

WEIGHTS	2.4 (140 bhp)	2.4 (170 bhp)	2.5T AWD	2.4T	D5	D5 AWD	T5	V70 2.4 Bi-Fuel (LPG <sup>^</sup> )	V70 2.4 Bi-Fuel (CNG <sup>#</sup> )
Min. kerb weight, kg (actual kerb weight dependent on spec.)	1485	1485	1611	1485	1578	1669	1485	1550	1569
Max. possible towing weight braked, kg	1800	1800	1800	1800	1800	1800	1800	1800	1800
Max. towing weight unbraked approx, kg**	750	750	750	750	750	750	750	750	750
Max. total weight, kg	2150	2150	2200	2150	2150	2200	2150	2150	2150
Max. roof load, kg	100	100	100	100	100	100	100	100	100
Max. payload, kg (dependent on spec.)	665	665	589	665	572	531	665	600	581

EXTERIOR (mm)		INTERIOR (mm)	
A Overall length	4710	H Front seat max. headroom >	997
B Overall width (exc. wing mirrors)	1804	I Front seats width	1427
C Unladen height	1465 (AWD 1490)	J Front seat max. legroom	1082
D Wheelbase length	2755	K Rear seat max. headroom >	988
E Front track width	1551	L Rear seats width	1419
F Rear track width	1548	M Rear seat max. legroom	894
G Ground to boot base height 606 (AWD 638)		N Load length luggage 2 seat mode ~	1848
		O Load length luggage 5 seat mode ~	1085



TRANSMISSION	All models
Manual	5
Automatic <sup>Δ</sup>	5

BRAKES	All models
Full load stopping distance 62-0 mph, m (ft)	42 (138)

FUEL TANK	Non Bi-Fuel models	V70 2.4 Bi-Fuel (LPG <sup>^</sup> )	V70 2.4 Bi-Fuel (CNG <sup>#</sup> )
Volume, litres (gallons)	70 (15.4)	50 (11.0) LPG 29 (6.4) Petrol	23 Nm <sup>3</sup> (Slow Fill) CNG 29 (6.4) Petrol

POWER STEERING SYSTEM	All models
(rack & pinion) Turning circle, m (ft) 195-225 section tyres	10.9 - 11.9 (35' 8" - 39' 0")

LUGGAGE COMPARTMENT	V70	V70 Bi-Fuel
Volume, litres (cu. ft)	485 (17.1)	
Volume, rear seats down, litres (cu. ft)	745 (26.3)	1641 (58.0)

PERFORMANCE	All models
Drag co-efficient	0.30

<sup>^</sup> Liquefied Petroleum Gas.

<sup>#</sup> Compressed Natural Gas.

\* The Urban fuel consumption figure is based on typical city driving, including starting the car from cold. The Extra Urban figure is based on typical motorway driving and cruising. The Combined figure averages the consumption across both cycles.

† These results do not express or imply any guarantee of the fuel consumption of a particular car as there are inevitable differences between individual cars of the same model. Additionally driving style, traffic conditions, as well as the age and mileage and standard of maintenance will affect a car's fuel consumption.

<sup>Δ</sup> 2.5 T AWD, D5 AWD, 2.4T & T5 – geartronic transmission is 5 speed.

> Figure quoted without sunroof

~ Measurement taken at height of floor covering.

**Notes**

All weights for any specific vehicle will vary according to standard and optional equipment fitted.

A weighbridge must be used to determine specific weights.

Data valid for manual transmission unless specified.

\*\* Unbraked towing weight must not exceed 50% of kerb weight up to a maximum of 750 kg.

All measurements in mm.

NB Some of the information in this price list may not be correct due to product changes which may have occurred since it was printed. Some of the equipment described or shown may now be available at extra cost. Before ordering, please ask your Volvo dealer for the latest information. The manufacturer reserves the right to make changes at any time, without notice, to price, colour, materials, specifications and models.

Volvo Car UK Limited, Globe Park, Marlow, Buckinghamshire, SL7 1YQ

	S	SE
<b>SAFETY &amp; SECURITY</b>		
Front Fog Lights		●
Dual Stage Driver and Passenger Airbags	●	●
SIPS (Side Impact Protection System)	●	●
SIPS Airbags	●	●
IC (Inflatable Curtain)	●	●
WHIPS (Whiplash Protection System) (Front Seats)	●	●
ABS (Anti-lock Brakes) with EBD (Electronic Brake Distribution)	●	●
STC (Stability and Traction Control)	●	●
DSTC (Dynamic Stability and Traction Control) (2.4T, 2.5T AWD & T5 only)	●	●
TRACS (Traction Control) (2.5 T AWD only)	●	●
5 Three Point Seat Belts	●	●
Seat Belt Pre-tensioners (Front and Rear)	●	●
Head Restraints – All 5 Seats	●	●
ISOFIX Child Seat Preparation	●	●
Anti-theft Alarm including Immobiliser with LED (Key Transponder)	●	●
Remote Control Central Locking Including Fuel Flap with Deadlocking System	●	●
Mass Movement Sensor	●	●
Tinted Windows	●	●
Day Running Lights	●	●
Headlamp Levelling System	●	●
High Level LED Brake Light	●	●
Front Side Marker Bumper Illumination/Rear Lamp Side Marker Reflectors	●	●
Home Safe and Approach Lighting	●	●
Rear Wash/Wipe with Interval Function	●	●
Load Cover (Cargo Area)	●	●
Load Protection Net (60%/40%)	●	●
Grocery Bag Holder (Luggage Area)>	●	●
Steering Wheel Remote	●	●
<b>INTERIOR</b>		
ECC (Electronic Climate Control) with AQS (Air Quality System)	●	●
B Pillar Ventilation	●	●
Pollen Filter	●	●
Exterior Temperature Gauge	●	●
Information Centre (2.4T, 2.5T AWD, Bi-Fuel^ & T5 only)	●	●
Geartronic Transmission (D5 AWD only)	●	●
Cruise Control	●	●
Berghamn Plush Upholstery	●	●
Select Leather-faced Upholstery (not T5)		●
Select Leather-faced Sports Upholstery (T5)		●
Leather Steering Wheel, Gear Knob and Handbrake Lever	●	●
Illuminated Ignition Lock	●	●
Electric Front and Rear Windows	●	●
Electrically Adjustable and Heated Door Mirrors	●	●
Electric Driver's Seat (with Memory) and Door Mirror Memory		●
Asymmetric Split Folding Rear Seat (60%/40%)	●	●
Forward Folding Front Passenger Seat	●	●
Height Adjustable Driver and Passenger Seats	●	●
Two Position Rear Seat Backrest (for Flexible Load Carrying)	●	●
Front Centre Armrest	●	●
Height and Reach Adjustable Steering Column	●	●
HU-603 RDS Single Slot CD Radio Cassette with 8 Speakers	●	●
HU-803 RDS 4 CD Radio with Dolby Pro Logic Surround Sound™~ with 4 x 50W Amplifier and 9 Speakers		●
Walnut Wood Effect Trim	●	●
12v Socket (Luggage Area)	●	●
Cupholder in Dashboard†	●	●
Two Cupholders in Tunnel Console**	●	●
Front and Rear Reading Lamps	●	●
Penholder and Credit Card Holder in Glove Compartment	●	●
Illuminated Passenger Vanity Mirror	●	●
<b>EXTERIOR</b>		
16" Mimas Alloy Wheels – 205/55 R16 91W Tyres (2.4 (140/170 bhp), Bi-Fuel & D5 only)	●	●
16" Sirius Alloy Wheels – 215/55 R16 91W Tyres (2.4T & 2.5T AWD only)	●	●
17" Amalthea Alloy Wheels – 225/45 R17 90W Tyres		●
Tempa Spare Wheel (not Bi-Fuel*)	●	●
Locking Wheel Nuts	●	●
Comfort Chassis	●	●
Dynamic Chassis (T5 only)		●
Dynamic Chassis (2.5 T AWD only)	●	●
Load Compensating Suspension (Bi-Fuel only)	●	●
Colour Co-ordinated Bumpers and Door Mirrors	●	●
Grey Sill Cover with Stainless Steel Step Covers	●	●
Grey/Chrome Side Moulding	●	●
Rear Bumper Protective Strip	●	●
Tinted Windows	●	●
Towbar Preparation	●	●

● = standard

^ Limited functionality on Bi-Fuel; electronic petrol fuel gauge only.

> Grocery Bag Holder is removed when Rear Facing Seats in Cargo Area are ordered.

† Cupholder in Dashboard is removed when Dual Band Integrated GSM Telephone is ordered.

\*\* Two Cupholders in Tunnel Console are removed when Front and Rear Ashtray, Cupholder in Tunnel Console and Front Cigarette Lighter are ordered.

# Tyre Weld supplied in lieu of Tempa spare wheel.

~ Dolby and Pro Logic Surround Sound™ are trademarks of Dolby Laboratories Licensing Corporation.

	Basic £	VAT £	Rec Retail Price £	Rec Retail Price €*	S	SE
<b>SAFETY &amp; SECURITY</b>						
Delete Passenger Airbag	-	-	-	-	nco	nco
Integrated Booster Cushions x 2	£221.28	£38.72	£260.00	€396.24	o	o
DSTC (Dynamic Stability and Traction Control) with Emergency Brake Assistance (Includes Information Centre)	£527.66	£92.34	£620.00	€944.88	o	u(£300)
Laminated Side Windows	£255.32	£44.68	£300.00	€457.20	o	o
Power Child Locks – Rear Doors	£63.83	£11.17	£75.00	€114.30	o	o
Inclination Sensor	£106.38	£18.62	£125.00	€190.50	o	o
Headlamp Wash/Wipe	£127.66	£22.34	£150.00	€228.60	o	o
Front Fog Lights	£153.19	£26.81	£180.00	€274.32	o	●
Load Compensating Suspension	£425.53	£74.47	£500.00	€762.00	o	o
Autodimming Rear View Mirror	£170.21	£29.79	£200.00	€304.80	o	●
First Aid Kit	£17.02	£2.98	£20.00	€30.48	o	o
<b>INTERIOR</b>						
Automatic Transmission (not 2.4T, 2.5T AWD, T5 or D5 AWD)	£936.17	£163.83	£1,100.00	€1,676.40	o	o
Geartronic Transmission (2.4T, 2.5T AWD & T5 only) (std. D5 AWD)	£1,063.83	£186.17	£1,250.00	€1,905.00	o	o
Electric Driver's Seat (with Memory) and Door Mirror Memory	£510.64	£89.36	£600.00	€914.40	o	●
Electric Driver and Passenger Seats (with Driver's Memory) and Door Mirror Memory	£1,021.28	£178.72	£1,200.00	€1,828.80	o	u(£600)
Rear Facing Seats in Cargo Area <sup>@†&gt;</sup> (not Bi-Fuel)	£425.53	£74.47	£500.00	€762.00	o	o
Heated Front Seats	£127.66	£22.34	£150.00	€228.60	o	o
Electric Folding Door Mirrors with Ground Lights	£170.21	£29.79	£200.00	€304.80	o	o
Electric Glass Tilt and Slide Sunroof	£595.74	£104.26	£700.00	€1,066.80	o	o
Front and Rear Ashtray, Cupholder in Tunnel Console and Front Cigarette Lighter	-	-	-	-	nco	nco
Anholt Leather/Textile Upholstery	£331.91	£58.09	£390.00	€594.36	o	n/a
Select Leather-faced Upholstery	£800.00	£140.00	£940.00	€1,432.56	o	●
Select Leather-faced Sports Upholstery (std. T5)	£1,055.32	£184.68	£1,240.00	€1,889.76	o	u(£300)
3-Spoke Wood/Leather Steering Wheel	£204.26	£35.74	£240.00	€365.76	o	o
Black Mesh Trim	-	-	-	-	nco	nco
Mesh Aluminium Trim	-	-	-	-	nco	nco
Information Centre <sup>^</sup>	£272.34	£47.66	£320.00	€487.68	o	●
Illuminated Driver's Vanity Mirror	£17.02	£2.98	£20.00	€30.48	o	●
HU-803 RDS 4 CD Radio, Dolby Surround Sound™™, 4 x 50W Amplifier and 9 Speakers	£212.77	£37.23	£250.00	€381.00	o	●
HU-803 RDS Audio Max 4 CD Radio, Dolby Surround Sound™™, 4 x 75W Amplifier and 11 Speakers	£425.53	£74.47	£500.00	€762.00	o	u(£250)
4 x 50W Amplifier for HU-603	£127.66	£22.34	£150.00	€228.60	o	●
Sub Woofer Under Load Area Floor <sup>@</sup> (not Bi-Fuel)	£127.66	£22.34	£150.00	€228.60	o	o
RTI Navigation System, Remote Control with Europe DVD Map, without TV	£2,127.66	£372.34	£2,500.00	€3,810.00	o	o
RTI Navigation System, Remote Control with Europe DVD Map and TV	£2,382.98	£417.02	£2,800.00	€4,267.20	o	o
Nokia/Ericsson Mobile Phone Kit (see your dealer for details)	-	-	-	-	o	o
Dual Band Integrated GSM Telephone <sup>&lt;</sup>	£765.96	£134.04	£900.00	€1,371.60	o	o
Rear Cupholders – Armrest	£29.79	£5.21	£35.00	€53.34	o	o
Foldable Table and Dual Cupholders – Rear	£63.83	£11.17	£75.00	€114.30	o	o
Rear Waste Bin	£17.02	£2.98	£20.00	€30.48	o	●
Luxury Floor Mats	£85.11	£14.89	£100.00	€152.40	o	o
<b>EXTERIOR</b>						
Bi-Xenon (Gas Discharge) Headlamps with Wash/Wipe	£553.19	£96.81	£650.00	€990.60	o	o
16" Orbit Alloy Wheels – 205/55 R16 91W Tyres	-	-	-	-	nco	n/a
16" Ursa Alloy Wheels – 215/55 R16 91W Tyres	£42.55	£7.45	£50.00	€76.20	o	n/a
16" Sirius Alloy Wheels – 215/55 R16 91W Tyres (std. 2.4T & 2.5T AWD)	£42.55	£7.45	£50.00	€76.20	o	n/a
17" Amalthea Alloy Wheels – 225/45 R17 90W Tyres	£255.32	£44.68	£300.00	€457.20	o	●
17" Thor Alloy Wheels – 225/45 R17 90W Tyres	£255.32	£44.68	£300.00	€457.20	o	nco
Alloy Spare Wheel (to Match Fitted Wheels) (not with 17") (not Bi-Fuel)	£140.43	£24.57	£165.00	€251.46	o	o
Large Steel Spare Wheel (not with 17") (not Bi-Fuel)	£85.11	£14.89	£100.00	€152.40	o	o
Rain Sensor - Automatic Windscreen Wiper Activation	£123.40	£21.60	£145.00	€220.98	o	o
Park Assist, rear <sup>#</sup>	£316.03	£55.31	£371.34	€565.92	o	o
Towbar – Flange type with 7 Pin Electrics <sup>#</sup>	£260.45	£45.58	£306.03	€466.39	o	o
Towbar – Flange type with 13 Pin Electrics <sup>#</sup>	£311.45	£54.50	£365.95	€557.71	o	o
Towbar – Detachable type with 7 Pin Electrics <sup>#</sup>	£311.52	£54.52	£366.04	€557.84	o	o
Towbar – Detachable type with 13 Pin Electrics <sup>#</sup>	£365.92	£64.04	£429.96	€655.26	o	o
Rear Spoiler <sup>#</sup>	£254.47	£44.53	£299.00	€455.68	o	o
Lowered Dynamic Chassis with Load Compensating Suspension (not AWD & Bi-Fuel)	£595.74	£104.26	£700.00	€1,066.80	o	o
Black Paint (Solid)	£212.77	£37.23	£250.00	€381.00	o	o
Metallic/Pearlescent Paint	£425.53	£74.47	£500.00	€762.00	o	o
Engine Badge Deletion (not 2.4 (140 bhp))	-	-	-	-	nco	nco
Roof Rails	-	-	-	-	nco	nco
<b>WINTER PACK</b>						
Heated Front Seats, Headlamp Wash/Wipe, Luxury Floor Mats and Rain Sensor	£319.15	£55.85	£375.00	€571.50	o	o
<b>PREMIUM PACK</b>						
Electric Driver and Passenger Seats (with Driver's Memory) and Door Mirror Memory, Electric Folding Door Mirrors with Ground Lights	£936.17	£163.83	£1,100.00	€1,676.40	o	n/a
<b>Upgrade for SE Variant</b>	£595.74	£104.26	£700.00	€1,066.80	n/a	o
<b>FAMILY PACK</b>						
Foldable Table and Dual Cupholders – Rear, Power Child Locks and Integrated Booster Cushions x 2	£255.32	£44.68	£300.00	€457.20	o	o
<b>COMMUNICATIONS PACK</b>						
HU-803 RDS Audio Max 4 CD Radio with Dolby Pro Logic Surround Sound™™, 4 x 75W Amplifier and 11 Speakers, Integrated GSM Telephone, RTI Navigation System, Remote Control with Europe DVD Map and TV	£2,808.51	£491.49	£3,300.00	€5,029.20	o	n/a
<b>Upgrade for SE Variant</b>	£2,553.19	£446.81	£3,000.00	€4,572.00	n/a	o
<b>SPORTS PACK (not 2.4 (140/170 bhp) or Bi-Fuel)</b>						
18" Nebula (BBS) Alloy Wheels, Lowered Chassis and Load Compensating Suspension	£1,361.70	£238.30	£1,600.00	€2,438.40	o	n/a
<b>Upgrade for SE Variant (not 2.4 (140/170) bhp or Bi-Fuel)</b>	£1,191.49	£208.51	£1,400.00	€2,133.60	n/a	o

\* Euro prices shown are for information only and are calculated using an exchange rate of 1.524 Euros to the £, as published in the Financial Times on 1st July 2002.

● = standard o = optional n/a = not available nco = no cost option i.e. a customer can upgrade to that option without paying any extra money.

u = upgrade i.e. a customer can upgrade to that option but will pay the difference in price, upgrade price shown in (£).

# Indicates total fitted price. At participating dealers only.

^ Two Cupholders in Tunnel Console are removed when Front and Rear Ashtray, Cupholder in Tunnel Console and Front Cigarette Lighter are ordered.

@ Rear Facing Seats in Cargo Area and Sub Woofer cannot be combined.

+ This item deletes the standard Grocery Bag Holder – Luggage Area.

< Cupholder in Dashboard is removed when Dual Band Integrated GSM Telephone is ordered.

† Rear Facing Seats in Cargo Area cannot be combined with Alloy Spare Wheel or Large Steel Spare Wheel.

™ – Dolby and Pro Logic Surround Sound™ are trademarks of Dolby Laboratories Licensing Corporation.

> Rear Facing Seat in cargo area is a factory fitted option except for D5 AWD Geartronic which is dealer fit at a price of £650. At participating dealers only.

VOLVO V40 ACCESSORIES DESCRIPTION	Basic £	VAT £	Rec Retail Price £	Rec Retail Price €*
<b>ACCESSORIES</b>				
Bag Holder	£8.51	£1.49	£10.00	€15.24
Comfort Pillow	£17.02	£2.98	£20.00	€30.48
Roof Load Carrier Bars (cars without roof rails)	£69.79	£12.21	£82.00	€124.97
Roof Load Carrier Bars Oval Profile	£83.40	£14.60	£98.00	€149.35
Roofbox – "Weekender" (370 litre volume)	£229.79	£40.21	£270.00	€411.48
Roofbox – "Dynamic 65" (405 litre volume)	£272.34	£47.66	£320.00	€487.68
Roofbox – "Dynamic 85" (510 litre volume)	£314.89	£55.11	£370.00	€563.88
Sunblinds (rear pass.doors)	£80.85	£14.15	£95.00	€144.78
Sunblind (luggage compartment)	£80.85	£14.15	£95.00	€144.78
First Aid Kit	£17.02	£2.98	£20.00	€30.48
Safety Net (steel)	£132.77	£23.23	£156.00	€237.74
Rubber Floor Mats (set of 4)	£42.55	£7.45	£50.00	€76.20
PC Table	£136.17	£23.83	£160.00	€243.84
Subwoofer	£272.34	£47.66	£320.00	€487.68
Dog Gate	£44.26	£7.74	£52.00	€79.25
Dog Gate Mounting Kit	£10.21	£1.79	£12.00	€18.29
Boot Mat (rubber)	£80.85	£14.15	£95.00	€144.78
Mudflaps (rear)	£25.53	£4.47	£30.00	€45.72
Mudflaps (front)	£21.28	£3.72	£25.00	€38.10
<b>CHILD ACCESSORIES</b>				
Child Booster Cushion	£36.60	£6.40	£43.00	€65.53
Child Booster Backrest	£47.66	£8.34	£56.00	€85.34

\* Indicates where prices shown are total fitted price. At participating dealers only.

UPHOLSTERY	Code	Upholstery/Door Colour	Dashboard Top Door Panel Colour	Door Insert Colour	Headliner Colour
Berghamn Plush	A451	Light Sand	Beige	Light Sand	Light Sand
	A470	Off Black	Off Black	Off Black	Granite
	A480	Oak	Oak	Oak	Arena
Anholt Leather/Textile	A351	Light Sand	Beige	Light Sand	Light Sand
	A370	Off Black	Off Black	Off Black	Granite
	A372	Sisal	Off Black	Sisal	Arena
	A373	Indigo	Off Black	Indigo	Granite
	A381	Arena	Oak	Arena	Arena
Select Leather-faced	A951	Light Sand	Beige	Light Sand	Light Sand
	A970	Off Black	Off Black	Off Black	Granite
	A972	Sisal	Off Black	Sisal	Arena
	A980	Oak	Oak	Oak	Arena
	A981	Arena	Oak	Arena	Arena
Select Leather-faced Sports	AA51	Light Sand	Beige	Light Sand	Light Sand
	AA70	Off Black	Off Black	Off Black	Granite
	AA72	Sisal	Off Black	Sisal	Arena
	AA80	Oak	Oak	Oak	Arena
	AA81	Arena	Oak	Arena	Arena

\* Euro prices shown are for information only and are calculated using an exchange rate of 1.524 Euros to the £, as published in the Financial Times on 1st July 2002.



16" Mimas



16" Orbit



16" Sirius



16" Ursa



17" Amalthea



17" Thor



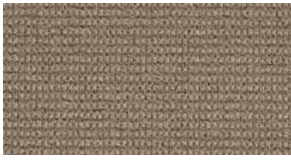
18" Nebula

# UPHOLSTERY

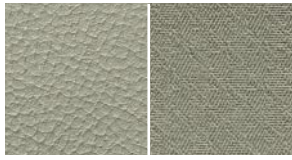
ACCESSORIES & UPHOLSTERY

CHOOSE YOUR PERFECT DRIVING ENVIRONMENT FOR YOUR VOLVO.

## BEIGE/LIGHT SAND



Berghamn plush  
Light Sand (A451)



Anholt Leather/textile  
Light Sand (A351)



Select Leather  
Light Sand (A951)

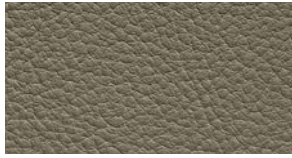


Select Leather Sport  
Light Sand (AA51)

## OAK



Berghamn plush  
Oak (A480)

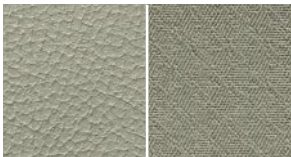


Select Leather  
Oak (A980)



Select Leather Sport  
Oak (AA80)

## OAK/ARENA



Anholt Leather/textile  
Arena (A381)



Select Leather  
Arena (A981)

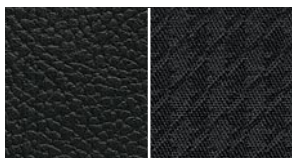


Select Leather Sport  
Arena (AA81)

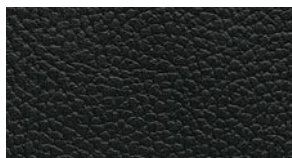
## OFF BLACK



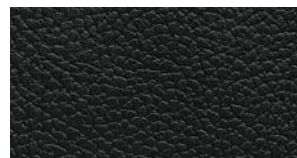
Berghamn Plush  
Off Black (A470)



Anholt Leather/textile  
Off Black (A370)

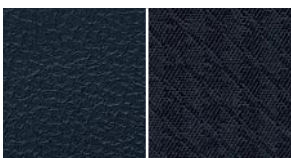


Select Leather  
Off Black (A970)

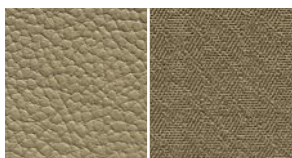


Select Leather Sport  
Off Black (AA70)

## OFF BLACK/INDIGO/SISAL



Anholt Leather/textile  
Indigo (A373)



Anholt Leather/textile  
Sisal (A372)

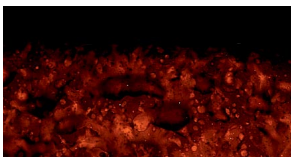


Select Leather  
Sisal (A972)

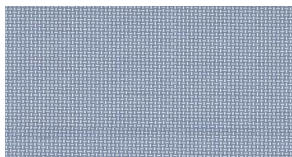


Select Leather Sport  
Sisal (AA72)

# INTERIOR INLAYS



Walnut Wood effect



Mesh Aluminium



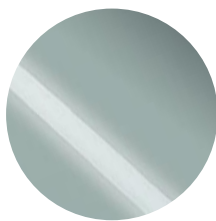
Black Mesh

CHOOSE YOUR COLOUR

WITH A WIDE RANGE OF EXTERIOR COLOURS YOUR VOLVO V70 CAN REFLECT YOUR PERSONAL TASTE.



**019**  
Black Stone



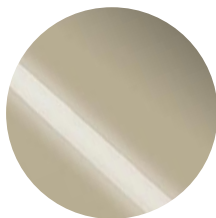
**444**  
Polarctic pearl



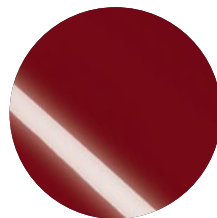
**452**  
Black Sapphire metallic



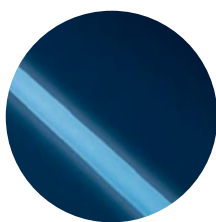
**189**  
Polar White



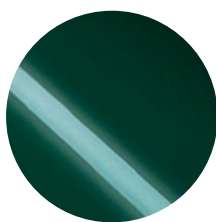
**446**  
Ash Gold pearl



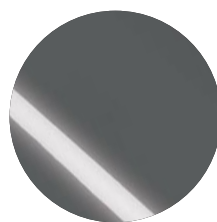
**454**  
Ruby Red pearl



**417**  
Nautic Blue pearl



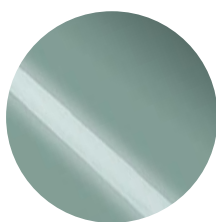
**447**  
Scarab Green pearl



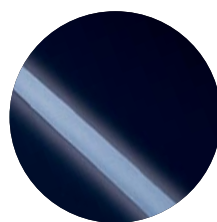
**455**  
Titanium Grey pearl



**426**  
Silver metallic



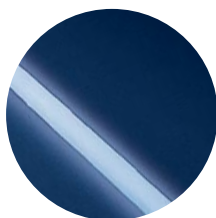
**449**  
Mistral Green metallic



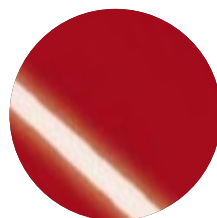
**604**  
Midnight Blue



**443**  
Moondust metallic



**450**  
Cosmos Blue metallic



**612**  
Passion Red