

V40 S

The comprehensive standard specification includes air-conditioning, remote central locking, 15" alloy wheels, electric windows, leather steering wheel, 7-speaker CD player, roof rails and a cargo safety net.

	Basic £	VAT £	Rec Retail Price £	On The Road Price £	On The Road Price w* Euros
PETROL					
V40 1.6 S	£12,625.53	£2,209.47	£14,835.00	£15,480.00	€25,216.92
V40 1.8 S	£13,476.60	£2,358.40	£15,835.00	£16,495.00	€26,870.36
V40 2.0 S	£14,080.85	£2,464.15	£16,545.00	£17,205.00	€28,026.95
V40 2.0T S	£15,017.02	£2,627.98	£17,645.00	£18,305.00	€29,818.85
DIESEL					
V40 1.9D (102 bhp) S	£14,251.06	£2,493.94	£16,745.00	£17,360.00	€28,279.44
V40 1.9D (115 bhp) S	£14,710.64	£2,574.36	£17,285.00	£17,900.00	€29,159.10
BI-FUEL					
V40 Bi-Fuel 1.8 (LPG*) S	£15,008.51	£2,626.49	£17,635.00	£17,350.85 ^Δ	€28,264.53

V40 SPORT

The Sport model includes front and rear spoilers, 16" Gallactica alloy wheels and twin headlamps with black surround – plus Visby woven/leather upholstery, piano black inlays and gearknob and a comprehensive information centre.

	Basic £	VAT £	Rec Retail Price £	On The Road Price £	On The Road Price w* Euros
PETROL					
V40 1.8 Sport	£14,114.89	£2,470.11	£16,585.00	£17,245.00	€28,092.11
V40 1.8i (122 bhp) Sport	£14,685.11	£2,569.89	£17,255.00	£17,880.00	€29,126.52
V40 2.0 Sport	£14,719.15	£2,575.85	£17,295.00	£17,955.00	€29,248.70
V40 2.0T Sport	£15,655.32	£2,739.68	£18,395.00	£19,055.00	€31,040.60
V40 T4 Sport	£16,540.43	£2,894.57	£19,435.00	£20,095.00	€32,734.76
DIESEL					
V40 1.9D (115 bhp) Sport	£15,348.94	£2,686.06	£18,035.00	£18,650.00	€30,380.85

Liquefied Petroleum Gas

* Euro prices shown are calculated using an exchange rate of 1.629 Euros to the £, as published in the Financial Times on 5th April 2002. Euro prices will be subject to the prevailing exchange rate at the time of purchase. These figures are for information purposes only.

Δ The 'On The Road' price includes a PowerShift grant of £919.15. Conditions apply – please see dealer for details.

POWER UP
WHETHER YOU DESIRE PULSE-RACING PERFORMANCE OR OUTSTANDING FUEL ECONOMY, YOUR WISH IS OUR COMMAND.

V40 SE

The SE model brings added luxury to the V40 – with leather upholstery, electronic climate control, comprehensive information centre, upgraded speaker system, cruise control, red wood effect inlays, chromium door handles and stylish 16" Telesto alloy wheels.

	Basic £	VAT £	Rec Retail Price £	On The Road Price £	On The Road Price w* Euros
PETROL					
V40 1.6 SE	£13,902.13	£2,432.87	£16,335.00	£16,980.00	€27,660.42
V40 1.8 SE	£14,753.19	£2,581.81	£17,335.00	£17,995.00	€29,313.86
V40 1.8i (122 bhp) SE	£15,323.40	£2,681.60	£18,005.00	£18,630.00	€30,348.27
V40 2.0 SE	£15,357.45	£2,687.55	£18,045.00	£18,705.00	€30,470.45
V40 2.0T SE	£16,293.62	£2,851.38	£19,145.00	£19,805.00	€32,262.35
DIESEL					
V40 1.9D (102 bhp) SE	£15,527.66	£2,717.34	£18,245.00	£18,860.00	€30,722.94
V40 1.9D (115 bhp) SE	£15,987.23	£2,797.77	£18,785.00	£19,400.00	€31,602.60
BI-FUEL					
V40 Bi-Fuel 1.8 (LPG#) SE	£16,136.17	£2,823.83	£18,960.00	£18,675.85 ^Δ	€30,422.96

V40 SPORT LUX

Combining the luxury features of the SE with the sporty exterior cues of the Sport, the Sport Lux is available with a wide range of engines including the powerful 200 bhp T4 engine.

	Basic £	VAT £	Rec Retail Price £	On The Road Price £	On The Road Price w* Euros
PETROL					
V40 1.8 Sport Lux	£15,178.72	£2,656.28	£17,835.00	£18,495.00	€30,128.36
V40 1.8i (122 bhp) Sport Lux	£15,748.94	£2,756.06	£18,505.00	£19,130.00	€31,162.77
V40 2.0 Sport Lux	£15,782.98	£2,762.02	£18,545.00	£19,205.00	€31,284.95
V40 2.0T Sport Lux	£16,719.15	£2,925.85	£19,645.00	£20,305.00	€33,076.85
V40 T4 Sport Lux	£17,604.26	£3,080.74	£20,685.00	£21,345.00	€34,771.01
DIESEL					
V40 1.9D (115 bhp) Sport Lux	£16,412.77	£2,872.23	£19,285.00	£19,900.00	€32,417.10

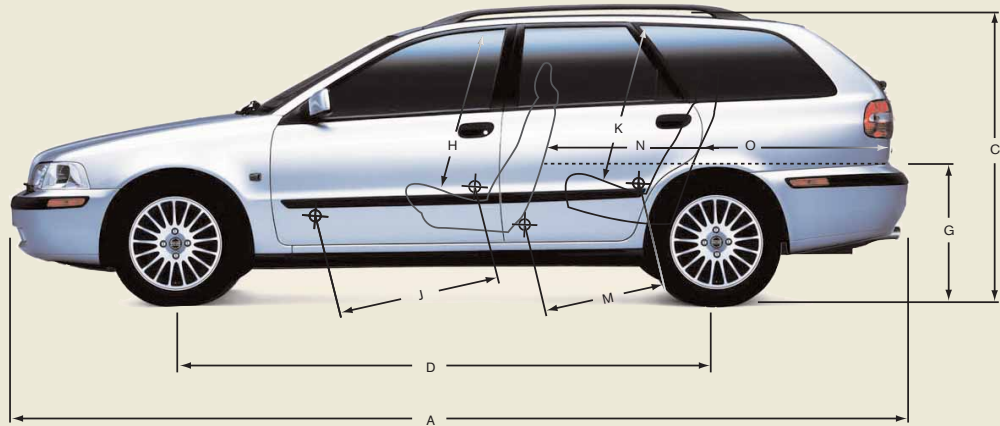
Liquefied Petroleum Gas

* Euro prices shown are calculated using an exchange rate of 1.629 Euros to the £, as published in the Financial Times on 5th April 2002. Euro prices will be subject to the prevailing exchange rate at the time of purchase. These figures are for information purposes only.

Δ The 'On The Road' price includes a PowerShift grant of £919.15. Conditions apply – please see dealer for details.

POWER UP
WHETHER YOU DESIRE PULSE-RACING PERFORMANCE OR OUTSTANDING FUEL ECONOMY, YOUR WISH IS OUR COMMAND.

ENGINE	1.6	1.8 (122 bhp)	1.8 Bi-Fuel LPG#/Petrol	1.8i (122 bhp)	2.0	1.9D (102/115 bhp)	2.0T	T4
Configuration	Transverse – 16 valve	Transverse – 16 valve	Transverse – 16 valve	Transverse – 16 valve	Transverse – 16 valve	Transverse – 8 valve	Transverse – 16 valve	Transverse – 16 valve
Cylinders	4	4	4	4	4	4	4	4
Engine capacity, cc	1587	1783	1783	1834	1948	1870	1948	1948
Bore x Stroke, mm	81 x 77	83 x 82.4	83 x 82.4	81 x 89	83 x 90	80 x 93	83 x 90	83 x 90
Max. output ECE, bhp/kw/rpm	109/80/5800	122/90/5800	120/88/5800 (LPG) 122/90/5800 (Petrol)	122/90/5500	136/100/5800	102/75/4000 (102 bhp) 115/85/4000 (115 bhp)	163/120/5250	200/147/5500
Max. torque ECE, Nm/rpm	145/4000	170/4000	167/4000 (LPG) 170/4000 (Petrol)	174/3750	190/4000	215/1750-3250 (102 bhp) 265/1750-2500 (115 bhp)	240/1800-4500	300/2500-4000
Octane rating	95 RON unleaded (min. 91)	95 RON unleaded (min. 91)	95 RON unleaded (min. 91) (Petrol)	95 RON unleaded (min. 95)	95 RON unleaded (min. 91)	N/A Diesel	95 RON unleaded (min. 91)	98 RON unleaded (min. 91)
Fuel system	Multipoint fuel injection	Multipoint fuel injection	Multipoint fuel injection	Multipoint direct fuel injection	Multipoint fuel injection	Multipoint direct fuel injection	Multipoint fuel injection	Multipoint fuel injection
Compression ratio	10.0:1	10.3:1	10.3:1	11.6:1	10.5:1	19.0:1	9.0:1	8.5:1



PERFORMANCE	1.6 Man	1.8 Man	1.8 Auto	1.8 Bi-Fuel LPG#/Petrol Man	1.8i Man	2.0 Man	2.0 Auto	1.9D Man	2.0T Man	2.0T Auto	T4 Man	T4 Auto
Top speed, mph	118	124	121	124 (LPG) 124 (Petrol)	124	127	124	115 (102 bhp) 121 (115 bhp)	137	134	146	143
Acceleration 0-62 mph, sec	12.0	10.5	11.5	11.0 (LPG) 10.5 (Petrol)	10.5	9.7	10.7	12.0 (102 bhp) 10.5 (115 bhp)	8.5	9.0	7.3	8.0

FUEL CONSUMPTION†	1.6 Man	1.8 Man	1.8 Auto	1.8 Bi-Fuel LPG#/Petrol Man	1.8i Man	2.0 Man	2.0 Auto	1.9D Man	2.0T Man	2.0T Auto	T4 Man	T4 Auto	
(Government Approved) Mpg (l/100km)* (m ³ /100km) LPG													
Urban	26.6 (10.6)	25.7 (11.0)	22.6 (12.5)	19.8 (14.3)	25.0 (11.3)	31.0 (9.1)	24.6 (11.5)	22.1 (12.8)	38.2 (7.4)	25.9 (10.9)	20.6 (13.7)	22.2 (12.7)	19.8 (14.3)
Extra Urban	47.1 (6.0)	47.1 (6.0)	43.5 (6.5)	34.4 (8.2)	45.6 (6.2)	49.6 (5.7)	46.3 (6.1)	42.8 (6.6)	65.7 (4.3)	46.3 (6.1)	44.1 (6.4)	42.2 (6.7)	41.5 (6.8)
Combined	36.7 (7.7)	36.2 (7.8)	32.5 (8.7)	27.2 (10.4)	34.9 (8.1)	40.9 (6.9)	34.9 (8.1)	31.7 (8.9)	52.3 (5.4)	35.8 (7.9)	31.0 (9.1)	31.7 (8.9)	29.7 (9.5)
CO ₂ g/km	184	187	208	168	193	164	194	213	142	189	217	212	227
VED (Vehicle Excise Duty) Band	D	E	E	D	E	C	E	E	B	E	E	E	E

INSURANCE GROUPS	1.6	1.8	1.8 Bi-Fuel	1.8i	2.0	1.9D	2.0T	T4
Volvo V40	8	10	10	10	12	11	14	16

WEIGHTS	V40 1.6/1.8 (122bhp) 1.8i (122 bhp)	V40 Bi-Fuel	V40 1.9D 102/115 bhp/ 2.0/2.0T/T4
Min. kerb weight, kg (actual kerb weight dependent on spec.)	1280	1341	1280
Max. possible towing weight braked, kg	1200	1200	1400
Max. towing weight unbraked approx, kg**	500	500	500
Max. total weight, kg	1800	1800	1800
Max. roof load, kg	100	100	100
Max. payload, kg (dependent on spec.)	520	459	520

EXTERIOR (mm)		INTERIOR (mm)	
A Overall length	4516	H Front seat max. headroom	982
B Overall width	1716	I Front seats width	1371
C Unladen height	1425	J Front seat max. legroom	1052
D Wheelbase length	2562	K Rear seat max. headroom	972
E Front track width	1472	L Rear seats width	1374
F Rear track width	1474	M Rear seat max. legroom	831
G Ground to boot base height	518	N Load length luggage 2 seat mode	1751
		O Load length luggage 5 seat mode	1018



TRANSMISSION	All models
Manual	5
Automatic	5

POWER STEERING SYSTEM	All models
(rack & pinion) Turning circle, m (ft) 195–225 section tyres	10.6 (34.8)

BRAKES	All models
Full load stopping distance 62-0 mph, m (ft)	42 (138)
Full load stopping distance 62-0 mph, secs	3.2
Disc diameter mm, front	256 Ventilated
Disc diameter mm, rear	260

LUGGAGE COMPARTMENT	V40	V40 Bi-Fuel
Volume, litres (cu. ft)	413 (14.6) (DIN)	357 (12.6) (DIN)
Volume, rear seats down, litres (cu. ft)	751 (26.5) (DIN)	695 (24.5) (DIN)
Volume, rear seats down, litres (cu. ft) to roof	1421 (50.2) (DIN)	1365 (48.2) (DIN)
DIN = Official measurement determined by loading 1 litre boxes into luggage compartment.		

PERFORMANCE	All models
Drag co-efficient	0.31

FUEL TANK	V40 Petrol	V40 Bi-Fuel (LPG#)
Volume, litres (gallons)	60 (13.2)	40 (8.8) LPG 60 (13.2) Petrol

Liquefied Petroleum Gas.

* The Urban fuel consumption figure is based on typical city driving, including starting the car from cold. The Extra Urban figure is based on typical motorway driving and cruising. The Combined figure averages the consumption across both cycles.

† These results do not express or imply any guarantee of the fuel consumption of a particular car as there are inevitable differences between individual cars of the same model. Additionally driving style, traffic conditions, as well as the age and mileage and standard of maintenance will affect a car's fuel consumption.

Notes

All weights for any specific vehicle will vary according to standard and optional equipment fitted.

A weighbridge must be used to determine specific weights.

Data valid for manual transmission unless specified.

** Unbraked towing weight must not exceed 50% of kerb weight up to a maximum of 750 kg.

All measurements in mm.

NB Some of the information in this price list may not be correct due to product changes which may have occurred since it was printed. Some of the equipment described or shown may now be available only at extra cost. Before ordering, please ask your Volvo dealer for the latest information. The manufacturer reserves the right to make changes at any time, without notice, to prices, colour, materials, specifications and models.

Volvo Car UK Limited, Globe Park, Marlow, Buckinghamshire, SL7 1YQ

	S	SPORT	SE	SPORT LUX
SAFETY & SECURITY				
Dual Stage Driver and Passenger Airbags with Load Limiters on Seat Belts	•	•	•	•
SIPS (Side Impact Protection System)	•	•	•	•
SIPS Airbags	•	•	•	•
IC (Inflatable Curtain)	•	•	•	•
WHIPS (Whiplash Protection System)	•	•	•	•
Passenger Cage and Crumple Zones	•	•	•	•
ABS (Anti-lock Brakes) with EBD (Electronic Brake Distribution)	•	•	•	•
DSA (Dynamic Stability Assistance) (2.0T/T4 only)	•	•	•	•
5 Three Point Seat Belts with Automatic Front Seat Belt Height Adjustment	•	•	•	•
Front Seat Belt Pre-tensioners	•	•	•	•
Head Restraints – All Five Seats	•	•	•	•
ISOFIX Child Seat Preparation (Outer Rear Seats)	•	•	•	•
Manual Rear Child Locks	•	•	•	•
Headlamp Levelling System	•	•	•	•
Day Running Lights	•	•	•	•
High Level LED Brake Light	•	•	•	•
Side Marker Bumper Illumination	•	•	•	•
Courtesy Light Delay	•	•	•	•
Home Safe Lighting	•	•	•	•
Anti-theft Alarm including Immobiliser with LED (Key Transponder)	•	•	•	•
Remote Control Central Locking including Fuel Flap with Deadlocking System	•	•	•	•
Ultrasonic Sensors for Anti-theft Alarm	•	•	•	•
Tinted Windows	•	•	•	•
Load Cover	•	•	•	•
Visible VIN Plate	•	•	•	•
INTERIOR				
Air Conditioning with Pollen Filter	•	•		
ECC (Electronic Climate Control) with Multifilter			•	•
Exterior Temperature Gauge (Bi-Fuel only)	•		•	
Information Centre (Not Bi-Fuel)		•	•	•
Cruise Control			•	•
Leather Steering Wheel and Leather Handbrake Lever	•	•	•	•
Leather Gear Lever Knob (not 1.6/Bi-Fuel)	•	•	•	•
Front and Rear Electric Windows	•	•	•	•
Electrically Adjustable and Heated Door Mirrors	•	•	•	•
HU-605 RDS CD Radio Cassette with 7 Speakers and 4x25W Amplifier – includes pre-wiring for 10 CD Autochanger	•	•	•	•
Upgraded Speaker System			•	•
Bornholm Plush Upholstery	•			
Visby Woven/Leather Upholstery		•		
Leather-faced Upholstery			•	•
Piano Black Inlays and Gear Knob		•		T4
Red Wood Effect Inlays and Gear Knob			•	•
Height Adjustable Driver's Seat and Steering Column	•	•	•	•
Ergonomically-designed Front Seats with Adjustable Lumbar Support	•	•	•	•
Forward Folding Front Passenger Seat	•	•	•	•
Front Centre Armrest with Sliding Cover over Tunnel Console	•	•	•	•
Rear Centre Armrest with Twin Cupholders			•	•
Asymmetric Split-folding Rear Seat (30%/70%)	•	•	•	•
Twin Storage Pockets on Front Seat Backs	•	•	•	•
Load Restraint Belt in Load Area	•	•	•	•
Cargo Safety Net	•	•	•	•
Passenger Vanity Mirror	•	•		
Illuminated Driver and Passenger Vanity Mirrors			•	•
Front and Rear Reading Lamps	•	•	•	•
Coinholder and 12v Socket*	•	•	•	•
EXTERIOR				
Double Headlamps	•		•	
Double Headlamps with Black Surround		•		•
Gas Discharge Headlamps with Black Surround and Headlamp Wash/Wipe		T4		T4
Front Fog Lights	•	•	•	•
Colour Co-ordinated Bumpers and Door Mirrors	•	•	•	•
Protective Side Mouldings	•	•	•	•
Bodycolour Protective Side Mouldings and Bumper Inlays			•	•
Chrome Grille Surround and Boot Release Button	•	•	•	•
Chromium Door Handles and Boot Strip			•	•
Front and Rear Colour Co-ordinated Spoilers		•		•
Roof Mounted Aerial	•	•	•	•
Roof Rails	nco	nco	nco	nco
15" Solaris Alloy Wheels – 195/60 VR15 Tyres	•			
16" Gallactica Alloy Wheels – 205/50 ZR16 Tyres		•		
16" Telesto Alloy Wheels – 205/50 ZR16 Tyres			•	•
125/90 Temporary Spare Wheel (Bi-Fuel supplied with Tyre Weld in lieu of spare wheel)	•	•	•	•
Locking Wheel Nuts	•	•	•	•
Speed Dependent Interval Wiper Function	•	•	•	•
Intermittent Rear Wash/Wipe	•	•	•	•
Comfort Chassis	•		•	•
Dynamic Chassis		T4		T4

SAFETY & SECURITY	Basic £	VAT £	Rec Retail Price £	Rec Retail Price €*	S	SPORT	SE	SPORT LUX
DSA (Dynamic Stability Assistance) (1.6/1.8/2.0 only, std. 2.0T/T4)	£306.38	£53.62	£360.00	€586.44	o	o	o	o
First Aid Kit	£21.28	£3.72	£25.00	€40.73	o	o	o	o
Warning Triangle	£17.02	£2.98	£20.00	€32.58	o	o	o	o
Delete Passenger Airbag	-	-	-	-	nco	nco	nco	nco
INTERIOR	Basic £	VAT £	Rec Retail Price £	Rec Retail Price €*	S	SPORT	SE	SPORT LUX
ECC (Electronic Climate Control)	£638.30	£111.70	£750.00	€1,221.75	o	o	•	•
Cruise Control	£255.32	£44.68	£300.00	€488.70	o	o	•	•
Information Centre (not Bi-Fuel)	£272.34	£47.66	£320.00	€521.28	o	•	•	•
Nokia/Ericsson Mobile Phone Kits (see your dealer for details)#	£368.72	£64.53	£433.25	€705.76	o	o	o	o
Automatic Transmission (Not 1.6, 1.8i, Bi-Fuel or 1.9D)	£936.17	£163.83	£1,100.00	€1,791.90	o	o	o	o
Electric Glass Tilt & Slide Sunroof	£595.74	£104.26	£700.00	€1,140.30	o	o	o	o
Front and Rear Ashtray and Front Cigarette Lighter [∞]	-	-	-	-	nco	nco	nco	nco
Front Centre Armrest with Two Cupholders in Tunnel Console	-	-	-	-	nco	nco	nco	nco
Visby Woven/Leather Upholstery	£331.91	£58.09	£390.00	€635.31	o	•	nco	nco
Leather-faced Upholstery	£800.00	£140.00	£940.00	€1,531.26	o	u (£550)	•	•
Electric Driver's Seat (No Memory)	£425.53	£74.47	£500.00	€814.50	n/a	o	o	o
Electric Driver and Passenger Seats (No Memory)	£851.06	£148.94	£1,000.00	€1,629.00	n/a	o	o	o
Height Adjustable Passenger Seat	£42.55	£7.45	£50.00	€81.45	o	o	o	o
Piano Black Inlays and Gear Knob (std. T4)	-	-	-	-	n/a	•	n/a	nco
Red Wood Effect Inlays and Gear Knob	-	-	-	-	n/a	n/a	•	•
Cyborg Inlays and Gear Knob	-	-	-	-	n/a	nco	nco	nco
HU-1205 Navigation System with CD Radio and UK Disc Map	£1,021.28	£178.72	£1,200.00	€1,954.80	o	o	o	o
EXTERIOR	Basic £	VAT £	Rec Retail Price £	Rec Retail Price €*	S	SPORT	SE	SPORT LUX
Metallic Paint	£425.53	£74.47	£500.00	€814.50	o	o	o	o
Reversing Sensor#	£305.81	£53.52	£359.33	€585.35	o	o	o	o
Load Compensating Suspension	£425.53	£74.47	£500.00	€814.50	o	o	o	o
Lowered Sports Chassis and Load Compensating Suspension	£595.74	£104.26	£700.00	€1,140.30	n/a	o	n/a	o
Tow Bar – New Flange type with 7 Pin Electrics#	£243.64	£42.64	£286.28	€466.35	o	o	o	o
Tow Bar – New Flange type with 13 Pin Electrics#	£280.81	£49.14	£329.95	€537.49	o	o	o	o
Tow Bar – Detachable type with 7 Pin Electrics#	£279.39	£48.89	£328.28	€534.77	o	o	o	o
Tow Bar – Detachable type with 13 Pin Electrics#	£336.98	£58.97	£395.95	€645.00	o	o	o	o
Gas Discharge Headlamps and Headlamp Wash/Wipe (std. T4)	£553.19	£96.81	£650.00	€1,058.85	o	o	o	o
Front and Rear Mudflaps	£51.06	£8.94	£60.00	€97.74	o	o	o	o
Engine Badge Deletion	-	-	-	-	nco	nco	nco	nco
15" Solaris Alloys – 195/60 VR15 Tyres	-	-	-	-	•	n/a	n/a	n/a
15" Vogon Alloys – 195/60 VR15 Tyres	-	-	-	-	nco	n/a	nco	n/a
15" Stellar Alloys – 195/60 VR15 Tyres	-	-	-	-	nco	n/a	nco	n/a
16" Gallactica Alloys – 205/50 ZR16 Tyres	£110.64	£19.36	£130.00	€211.77	n/a	•	n/a	n/a
16" Telesto Alloys – 205/50 ZR16 Tyres	£110.64	£19.36	£130.00	€211.77	o	nco	•	•
16" Crater Alloys – 205/50 ZR16 Tyres	£170.21	£29.79	£200.00	€325.80	o	u (£70)	u (£70)	u (£70)



15" Solaris



15" Vagon



15" Stellar



16" Gallactica



16" Telesto



16" Crater

FAMILY PACK	Basic £	VAT £	Rec Retail Price £	Rec Retail Price €*	S	SPORT	SE	SPORT LUX
Power Child Locks, Integrated					o	o	o	o
Booster Cushions (x2) and Lateral Headrest Supports (x2) (not Bi-Fuel)	£255.32	£44.68	£300.00	€488.70	o	o	o	o
Integrated Booster Cushions (x2) and Lateral Headrest Supports (x2) (Bi-Fuel only)	£212.77	£37.23	£250.00	€407.25	o	n/a	o	n/a
WINTER PACK	Basic £	VAT £	Rec Retail Price £	Rec Retail Price €*	S	SPORT	SE	SPORT LUX
Headlamp Wash/Wipe, Heated Front Seats and Luxury Floor Mats (not T4)	£238.30	£41.70	£280.00	€456.12	o	o	o	o
Heated Front Seats and Luxury Floor Mats (T4 only)	£170.21	£29.79	£200.00	€325.80	n/a	o	n/a	o

• = standard, o = option, n/a = not available, nco = no cost option, u (£) = upgrade.

[∞] Coinholder and 12v Socket are removed when Front Ashtray and Front Cigarette Lighter are ordered.

Indicates total fitted price. At participating dealers only.

* The Euro prices shown in this price list are calculated using an exchange rate of 1.629 Euros to the £, the exchange rate published in the Financial Times as at 5th April 2002. Euro prices will be subject to the prevailing exchange rate at the time of purchase. These figures are for information purposes only.

VOLVO V40 ACCESSORIES DESCRIPTION	Basic £	VAT £	Rec Retail Price £	Rec Retail Price €*
CHILD SEAT INC. ACCESSORIES				
Child Seat	£148.09	£25.91	£174.00	€283.45
Support Legs	£14.47	£2.53	£17.00	€27.69
Sleep Pillow	£8.51	£1.49	£10.00	€16.29
Baby Insert	£28.94	£5.06	£34.00	€55.39
Child Table	£37.45	£6.55	£44.00	€71.68
Child Booster Cushion	£36.60	£6.40	£43.00	€70.05
Child Booster Backrest	£47.66	£8.34	£56.00	€91.22
ACCESSORIES				
Bag Holder	£8.51	£1.49	£10.00	€16.29
Sleep Support Cushion	£21.28	£3.72	£25.00	€40.73
Load Carrier (oval profile) V40	£83.40	£14.60	£98.00	€159.64
Load Carrier	£71.49	£12.51	£84.00	€136.84
Bumper Protector	£55.32	£9.68	£65.00	€105.89
Roofbox – 'Weekender' (370 litre volume)	£229.79	£40.21	£270.00	€439.83
Roofbox – 'Dynamic 65' (405 litre volume)	£272.34	£47.66	£320.00	€521.28
Roofbox – 'Dynamic 85' (510 litre volume)	£314.89	£55.11	£370.00	€602.73
Cargo Space Divider	£93.62	£16.38	£110.00	€179.19
Rubber Floor Mats (set of 4)	£58.72	£10.28	£69.00	€112.40
PC Table	£136.17	£23.83	£160.00	€260.64



UPHOLSTERY	Code	Upholstery/Door Insert Colour	Door Panel/Dashboard Colour	Door Insert Material	Headliner Colour	Interior Inlay/Gear Knob
Bornholm Plush	7772	Off Black	Off Black	Plush	Light Grey	Standard Grey Trim
	7779	Arena	Off Black	Plush	Arena	Standard Grey Trim
	7792	Arena	Oak	Plush	Arena	Standard Grey Trim
Visby Woven/Leather	7371	Off Black	Off Black	Woven Cloth	Light Grey	Red Wood Effect, Cyborg or Piano Black Inlay
	7379†	Arena	Off Black	Woven Cloth	Arena	Red Wood Effect, Cyborg or Piano Black Inlay
	7391	Arena	Oak	Woven Cloth	Arena	Red Wood Effect or Cyborg Inlay
Leather-faced	7970	Off Black	Off Black	Leather	Light Grey	Red Wood Effect, Cyborg or Piano Black Inlay
	7979†	Arena	Off Black	Leather	Arena	Red Wood Effect, Cyborg or Piano Black Inlay
	7990	Arena	Oak	Leather	Arena	Red Wood Effect or Cyborg Inlay

† This upholstery must be ordered in combination with an interior inlay.

* The Euro prices shown in this price list are calculated using an exchange rate of 1.629 Euros to the £, the exchange rate published in the Financial Times as at 5th April 2002. Euro prices will be subject to the prevailing exchange rate at the time of purchase. These figures are for information purposes only.

UPHOLSTERY

FINISHING TOUCHES

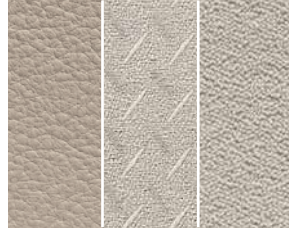
CHOOSE YOUR PERFECT DRIVING ENVIRONMENT FOR YOUR VOLVO.

S



Bornholm Plush Arena
(7792)

SPORT

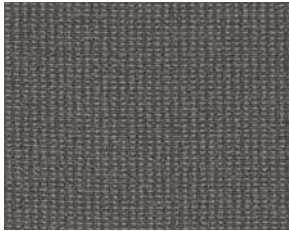


Visby Woven/Leather Arena
(7391)

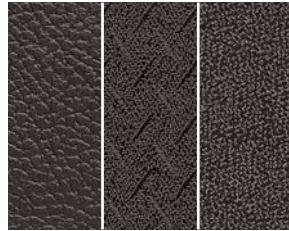
SE & SPORT LUX



Leather-faced Arena
(7990)



Bornholm Plush Off Black
(7772)



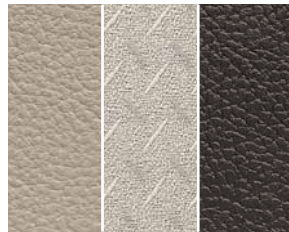
Visby Woven/Leather Off Black
(7371)



Leather-faced Off Black
(7970)



Bornholm Plush/Arena Off Black
(7779)



Visby Woven/Leather Arena/
Off Black (7379)



Leather-faced Arena/Off Black
(7979)

INTERIOR INLAYS



Red Wood effect

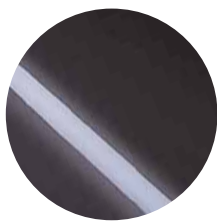


Cyborg



Piano Black

WITH A WIDE RANGE OF COLOURS YOUR VOLVO V40 CAN REFLECT YOUR PERSONAL TASTE.



243
Dark Blue



343
Atlantic Blue metallic



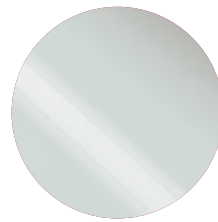
351
Maya Gold metallic



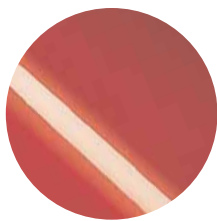
249
White



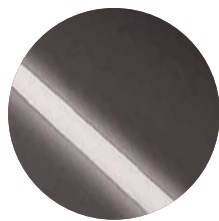
346
Black Sapphire metallic



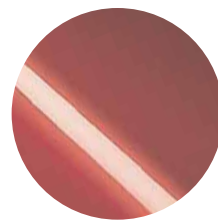
352
Silver Green metallic



250
Red



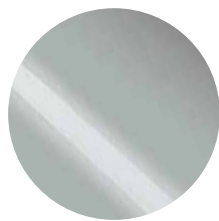
347
Titanium Grey metallic



353
Cherry Red metallic



329
Pure Silver metallic



348
Bamboo Green metallic



354
Virtual Blue metallic

