

S80 S

The comprehensive standard specification includes electronic climate control, 16" Regulus alloy wheels, CD player and 8 speakers, leather steering wheel, cruise control, walnut wood effect trim, DSTC (Dynamic Stability and Traction Control) plus all the safety features you would expect from Volvo.

	Basic £	VAT £	Rec Retail Price £	On The Road Price £	On The Road Price € ⁰
PETROL					
2.4 (140 bhp) S	£17,400.00	£3,045.00	£20,445.00	£21,110.00	€32,467.18
2.4 (170 bhp) S	£18,608.51	£3,256.49	£21,865.00	£22,530.00	€34,651.14
2.0T S	£18,902.13	£3,307.87	£22,210.00	£22,875.00	€35,181.75
2.5T S	£19,923.40	£3,486.60	£23,410.00	£24,075.00	€37,027.35
DIESEL					
D5 S	£18,902.13	£3,307.87	£22,210.00	£22,870.00	€35,174.06
Bi-fuel					
2.4 Bi-fuel (LPG ^(w)) S	£19,314.89	£3,380.11	£22,695.00	£22,231.60 ^(w)	€34,192.20
2.4 Bi-fuel (CNG ^(m)) S	£19,995.74	£3,499.26	£23,495.00	£22,583.09 ^(w)	€34,732.79

S80 SE

The SE model offers electric driver's seat, Leather-faced upholstery, 17" Stentor alloy wheels, 4 x CD player with Dolby Pro Logic Surround Sound^{TM(w)} and 9 speakers.

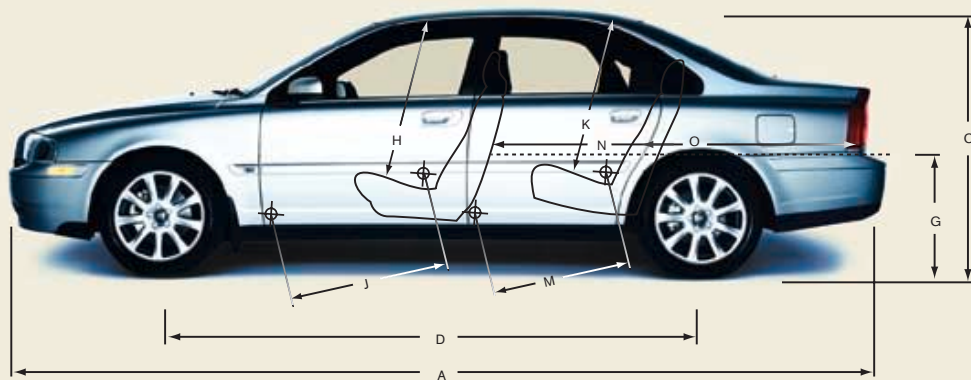
	Basic £	VAT £	Rec Retail Price £	On The Road Price £	On The Road Price € ⁰
PETROL					
2.4 (140 bhp) SE	£19,187.23	£3,357.77	£22,545.00	£23,210.00	€35,696.98
2.4 (170 bhp) SE	£20,395.74	£3,569.26	£23,965.00	£24,630.00	€37,880.94
2.0T SE	£20,689.36	£3,620.64	£24,310.00	£24,975.00	€38,411.55
2.5T SE	£21,710.64	£3,799.36	£25,510.00	£26,175.00	€40,257.15
2.9 SE (Geartronic)	£23,400.00	£4,095.00	£27,495.00	£28,160.00	€43,310.08
T6 SE (Geartronic)	£25,736.17	£4,503.83	£30,240.00	£30,905.00	€47,531.89
DIESEL					
D5 SE	£20,689.36	£3,620.64	£24,310.00	£24,970.00	€38,403.86
Bi-fuel					
2.4 Bi-fuel (LPG ^(w)) SE	£20,910.64	£3,659.36	£24,570.00	£24,106.60 ^(w)	€37,075.95
2.4 Bi-fuel (CNG ^(m)) SE	£21,591.49	£3,778.51	£25,370.00	£24,458.09 ^(w)	€37,616.54

S80 EXECUTIVE

The Executive takes comfort to new S80 heights. Unique soft leather upholstery, 2 x 7" rear TV screens, DVD player and built-in refrigerator make it the perfect place to relax or work on the move.

	Basic £	VAT £	Rec Retail Price £	On The Road Price £	On The Road Price € ⁰ Euros
PETROL					
2.9 Executive (Geartronic)	£31,413.62	£5,497.38	£36,911.00	£37,576.00	€57,265.82
T6 Executive (Geartronic)	£33,664.68	£5,891.32	£39,556.00	£40,221.00	€61,296.80
DIESEL					
D5 Executive (Automatic)	£29,242.55	£5,117.45	£34,360.00	£35,020.00	€53,370.48

ENGINE	2.0T	2.4 (140 bhp)	2.4 (170 bhp)	2.5T	D5	2.9	T6	2.4 Bi-fuel LPG ⁽ⁱ⁾ Petrol		2.4 Bi-fuel CNG ⁽ⁱⁱ⁾ Petrol	
Configuration	Transverse 20 valve	Transverse 20 valve	Transverse 20 valve	Transverse 20 valve	Transverse 20 valve	Transverse 24 valve	Transverse 24 valve	Transverse 20 valve		Transverse 20 valve	
Cylinders	5	5	5	5	5	6	6	5		5	
Engine capacity, cc	1984	2435	2435	2521	2401	2922	2922	2435		2435	
Bore x Stroke, mm	81 x 77	83 x 90	83 x 90	83 x 93	81 x 93	83 x 90	83 x 90	83 x 90		83 x 90	
Max. output ECE, bhp/kw/rpm	180 132 5300	140 103 4500	170 125 5900	210 154 5000	163 120 4000	196 144 5200	272 200 5200	140 103 5100	140 103 4500	140 103 5800	140 103 4500
Max. torque ECE, Nm/rpm	240 2200–5300	220 3750	230 4500	320 1500–4500	340 1750–3000	280 3900	380 1800–5000	214 4500	220 3750	192 4500	220 3750
Octane rating	95 ^(v) RON unleaded (min.91)	95 ^(v) RON unleaded (min.91)	95 ^(v) RON unleaded (min.91)	95 ^(v) RON unleaded (min.91)	Diesel	95 ^(v) RON unleaded (min.91)	95 ^(v) RON unleaded (min.91)	LPG ⁽ⁱ⁾	95 RON unleaded (min.91)	CNG ⁽ⁱⁱ⁾	95 RON unleaded (min.91)
Fuel system	Multipoint fuel injection	Multipoint fuel injection	Multipoint fuel injection	Multipoint fuel injection	Multipoint direct fuel injection	Multipoint fuel injection	Multipoint direct fuel injection	Multipoint fuel injection		Multipoint fuel injection	
Compression ratio	9.5:1	10.3:1	10.3:1	9.0:1	18.0:1	10.5:1	8.5:1	10.3:1		10.3:1	



PERFORMANCE		2.0T	2.4 (140 bhp)	2.4 (170 bhp)	2.5T	D5	2.9 ^(viii)	T6 ^(viii)	2.4 Bi-fuel LPG ⁽ⁱ⁾ Petrol		2.4 Bi-fuel CNG ⁽ⁱⁱ⁾ Petrol	
Top speed (mph) (2.9 & T6 – Geartronic)	Man	140	127	137	146	130			127	127	127	127
	Auto	134	124	134	140	130	140	155	124	124	124	124
Acceleration 0-62mph (sec)	Man	9.1	10.5	9.0	7.3	9.8			10.6	10.5	11.0	10.5
	Auto	9.8	11.4	9.9	7.7	10.2	8.9	7.2	11.5	11.4	11.9	11.4

FUEL CONSUMPTION ^(iii, iv)		2.0T	2.4 (140 bhp)	2.4 (170 bhp)	2.5T	D5	2.9 ^(viii)	T6 ^(viii)	2.4 Bi-fuel LPG ⁽ⁱ⁾ Petrol		2.4 Bi-fuel CNG ⁽ⁱⁱ⁾ Petrol	
Urban	Man mpg (l/100km)	21.4 (13.2)	22.4 (12.6)	22.4 (12.6)	21.7 (13.0)	31.4 (9.0)			17.5 (16.1)	22.8 (12.4)	22.1 (12.8)	22.1 (12.8)
	Auto mpg (l/100km)	18.8 (15.0)	20.6 (13.7)	20.3 (13.9)	19.8 (14.3)	25.9 (10.9)	18.7 (15.1)	17.3 (16.3)	15.1 (18.7)	19.9 (14.2)	18.7 (15.1)	19.0 (14.9)
Extra urban	Man mpg (l/100km)	39.2 (7.2)	40.9 (6.9)	39.8 (7.1)	39.8 (7.1)	55.4 (5.1)			31.7 (8.9)	40.9 (6.9)	39.8 (7.1)	39.8 (7.1)
	Auto mpg (l/100km)	36.2 (7.8)	38.2 (7.4)	38.2 (7.4)	37.7 (7.5)	46.3 (6.1)	34.0 (8.3)	33.6 (8.4)	28.0 (10.1)	37.2 (7.6)	35.8 (7.9)	37.2 (7.6)
Combined	Man mpg (l/100km)	30.1 (9.4)	31.4 (9.0)	31.0 (9.1)	30.4 (9.3)	43.5 (6.5)			24.4 (11.6)	31.7 (8.9)	30.7 (9.2)	30.7 (9.2)
	Auto mpg (l/100km)	27.2 (10.4)	29.1 (9.7)	28.8 (9.8)	28.2 (10.0)	36.2 (7.8)	26.2 (10.8)	25.0 (11.3)	21.2 (13.3)	28.2 (10.0)	26.9 (10.5)	28.0 (10.1)
CO ₂ g/km	Man	223	215	217	222	172			187	213	164	219
	Auto	246	232	235	239	207	259	272	215	240	187	246
VED (Vehicle Excise Duty) Band	Man	D	D	D	D	C			D		B	
	Auto	D	D	D	D	D	D	D	D		D	

INSURANCE GROUPS	2.0T	2.4 (140 bhp)	2.4 (170 bhp)	2.5T	D5	2.9	T6	2.4 Bi-fuel LPG ⁽ⁱ⁾	2.4 Bi-fuel CNG ⁽ⁱⁱ⁾
Volvo S80	14 (S) 15 (SE)	14	14	15 (S) 16 (SE)	13 Exec 15	15	16	14	14

WEIGHTS	2.0T	2.4 (140 bhp)	2.4 (170 bhp)	2.5T	D5	2.9	T6	2.4 Bi-fuel LPG ⁽ⁱ⁾	2.4 Bi-fuel CNG ⁽ⁱⁱ⁾
Min. kerb weight, kg (actual kerb weight dependent on spec.)	1539	1465	1465	1539	1535	1584	1626	1520	1539
Max. possible towing weight braked, kg	1800/1600 (Auto)	1800	1800	1800	1800	1800	1800	1800	1800
Max. towing weight unbraked approx, kg ^(vi)	750	750	750	750	750	750	750	750	750
Max. total weight, kg	2140	2140	2140	2140	2140	2140	2140	2140	2140
Max. roof load, kg	100	100	100	100	100	100	100	100	100
Max. payload, kg (dependent on spec.)	601	675	675	601	605	556	514	620	601

EXTERIOR (mm)		INTERIOR (mm)	
A Overall length	4822	H Front seat max. headroom ^(vii)	988
B Overall width (exc. wing mirrors)	1832	I Front seats width	1472
C Unladen height	1452	J Front seat max. legroom ^(vii)	1072
D Wheelbase length	2791	K Rear seat max. headroom ^(vii)	956
E Front track width	1570	L Rear seats width	1446
F Rear track width	1548	M Rear seat max. legroom	911
G Rear load height (672 Bi-fuel)	661	N Load length luggage 2 seat mode	1924
		O Load length luggage 5 seat mode	1108



TRANSMISSION	All models	
Manual	5	
Automatic	5	
Geartronic	4 (2.9 & T6 only)	

POWER STEERING SYSTEM	All models	
(rack & pinion) Turning circle, m (ft) 205-235 section tyres	10.9 – 12.0 (35'8" – 39'0")	

BRAKES	2.0T, 2.4, D5, 2.4 Bi-fuel	2.5T, 2.9, T6
Full load stopping distance 62-0 mph, m (ft)	42 (138)	42 (138)
Disc diameter mm, front	286 Ventilated	305 Ventilated
Disc diameter mm, rear	288	288

LUGGAGE COMPARTMENT	All models	
Volume, litres (cu.ft)	407 (14.4)	
Volume, rear seats down, litres (cu.ft)	902 (31.9)	

PERFORMANCE	All models	
Drag co-efficient	0.28	

FUEL TANK	S80	S80 Bi-fuel
Volume, litres (gallons)	70 (15.4)	50 (11.0) LPG ⁽ⁱ⁾
2.4 (140 bhp), 2.4 (170 bhp), D5		29 (6.4) Petrol
Volume, litres (gallons)	80 (17.6)	23 Nm ³ CNG ⁽ⁱⁱ⁾ (Slow Fill)
2.0T, 2.5T, 2.9, T6		29 (6.4) Petrol

- (i) Liquefied Petroleum Gas.
- (ii) Compressed Natural Gas.
- (iii) These results do not express or imply any guarantee of the fuel consumption of a particular car as there are inevitable differences between individual cars of the same model. Additionally driving style, traffic conditions, as well as the age and mileage and standard of maintenance will affect a car's fuel consumption.
- (iv) The Urban fuel consumption figure is based on typical city driving, including starting the car from cold. The Extra Urban figure is based on typical motorway driving and cruising. The Combined figure averages the consumption across both cycles.
- (v) For best performance and lowest fuel consumption 98 RON is recommended. 95 RON can be used for normal driving.
- (vi) Unbraked towing weight must not exceed 50% of kerb weight up to a maximum of 750 kg.
- (vii) Figure quoted without sunroof.
- (viii) 2.9 and T6 only available with Geartronic.

Notes
All weights for any specific vehicle will vary according to standard and optional equipment fitted.
A weighbridge must be used to determine specific weights.
Data valid for manual transmission unless specified.
All measurements in mm.

NB Some of the information in this price list may not be correct due to product changes which may have occurred since it was printed. Some of the equipment described or shown may now be available only at extra cost. Before ordering, please ask your Volvo dealer for the latest information. The manufacturer reserves the right to make changes at any time, without notice, to prices, colour, materials, specifications and models.

Volvo Car UK Limited, Globe Park, Marlow, Buckinghamshire, SL7 1YQ

	S	SE	EXECUTIVE
SAFETY & SECURITY			
Dual Stage Driver and Passenger Airbags	•	•	•
SIPS (Side Impact Protection System)	•	•	•
SIPS Airbags	•	•	•
IC (Inflatable Curtain)	•	•	•
WHIPS (Whiplash Protection System) (Front Seats)	•	•	•
ABS (Anti-lock Brakes) with EBD (Electronic Brake Distribution)	•	•	•
DSC (Dynamic Stability and Traction Control) with Electronic Brake Assistance	•	•	•
5 Three Point Seat Belts	•	•	•
Seat Belt Pre-tensioners (Front and Rear)	•	•	•
Head Restraints - All 5 Seats	•	•	•
ISOFIX Child Seat Preparation (not Executive)	•	•	•
Anti-theft Alarm including Immobiliser with LED (Key Transponder) and Panic Function	•	•	•
Key Integrated Remote Control Central Locking including Fuel Flap with Deadlocking System	•	•	•
Mass Movement Sensor	•	•	•
Tinted Windows	•	•	•
Visible VIN Plate	•	•	•
Day Running Lights	•	•	•
Headlamp Levelling System	•	•	•
High Level LED Brake Light	•	•	•
Front Side Marker Bumper Illumination/Rear Lamp Side Marker Reflectors	•	•	•
Home Safe and Approach Lighting	•	•	•
INTERIOR			
ECC (Electronic Climate Control) with AQS (Air Quality System) and Pollen Filter	•	•	•
B Pillar Ventilation	•	•	•
Exterior Temperature Gauge	•	•	•
Information Centre ⁽ⁱ⁾	•	•	•
Cruise Control	•	•	•
Geartronic Transmission (2.9 & T6 only)	•	•	•
Front and Rear Electric Windows	•	•	•
Electric Rear Window Sun Curtain	•	•	•
Electrically Adjustable and Heated Door Mirrors	•	•	•
Electric Folding Door Mirrors with Ground Lights	•	•	•
Illuminated Driver and Passenger Vanity Mirrors	•	•	•
Front and Rear Reading Lamps	•	•	•
Autodimming Rear View Mirror	•	•	•
Front Cupholders ^{(ii) & (vi)}	•	•	•
Front and Rear Cupholders	•	•	•
Luggage Holder, Retractable in Luggage Compartment	•	•	•
First Aid Kit	•	•	•
Warning Triangle	•	•	•
Electric Driver's Seat (with Memory) and Door Mirror Memory	•	•	•
Electric Driver and Passenger Seats (with Driver's Memory) and Door Mirror Memory	•	•	•
Manual Height Adjustable Driver and Passenger Seats	•	•	•
Forward Folding Front Passenger Seat	•	•	•
Storage Pockets on Rear Seat Cushion	•	•	•
Asymmetric Split-folding Rear Seat (60%/40%)	•	•	•
Heated Front and Rear Seats with Additional Rear Legroom	•	•	•
Electric Folding Rear Headrests	•	•	•
Leather Steering Wheel, Gear Knob and Handbrake Lever	•	•	•
Steering Wheel Remote Audio Controls	•	•	•
Height and Reach Adjustable Steering Column	•	•	•
Illuminated Ignition Lock	•	•	•
Chronograph Instrument Dials (2.9 & T6 only)	•	•	•
Walnut Wood Effect Trim	•	•	•
Walnut Wood Trim	•	•	•
Sarek Plush Upholstery	•	•	•
Leather-faced Upholstery	•	•	•
Leather-faced Sports Upholstery	•	T6	•
Executive Soft Leather Upholstery with Contrast Piping	•	•	•
HU-601 RDS Single Slot CD Radio Cassette with 6 Speakers	•	•	•
HU-801 RDS 4 x CD Radio with Dolby Pro Logic Surround Sound ⁽ⁱⁱⁱ⁾ with High Performance 4 x 50W Amplifier and 9 Speakers	•	•	•
Rear Seat Entertainment Unit:	•	•	•
- Front Armrest with DVD Player	•	•	•
- 2 x 7" TFT screens with IR Headphones, TV Tuner, Remote Control and Games Console Socket	•	•	•
RTI Navigation System with Europe DVD Map without TV	•	•	•
Electronic Accessory Preparation	•	•	•
Rear Refrigerator and Glass Compartment with 4 Glasses	•	•	•
Rear Ashtray and Rear Power Outlet	•	•	•
Executive Floor Mats	•	•	•
EXTERIOR			
16" Phoenix Alloy Wheels – 215/55 R16 91W Tyres	•	•	•
17" Stentor Alloy Wheels – 225/50 R17 94Y Tyres	•	•	•
17" Interceptor Alloy Wheels – 225/50 R17 94Y Tyres	•	•	•
Locking Wheel Nuts	•	•	•
Tempa Spare Wheel (not Bi-fuel)	•	•	•
Tyre Repair Kit – Tyre Sealant and 12V Compressor (Bi-fuel only)	•	•	•
Front Fog Lights	•	•	•
Headlamp Wash/Wipe	•	•	•
Rain Sensor – Automatic Windscreen Wiper Activation	•	•	•
Comfort Chassis (std. 2.4 (140/170 bhp) & D5) ^(vii)	•	•	•
Dynamic Chassis (std. 2.0T, Bi-fuel, 2.5T, 2.9, T6 & with 17" wheels)	•	•	•
Load Compensating Suspension (Bi-fuel only)	•	•	•
Towbar preparation	•	•	•
Colour Co-ordinated Bumpers and Door Mirrors	•	•	•
Grey Sill Cover with Stainless Steel Step Covers and Body Colour Side Mouldings with Chrome Strip	•	•	•
Full Body Coloured Sills and Lower Bumper Mouldings	•	•	•
Exterior Executive Badge	•	•	•
Wider Rear Door Opening Angle	•	•	•
Umbrella Holder with Umbrella	•	•	•

• = Standard, o = option, n/a = not available, nco = no cost option, u (£) = upgrade to that option without paying any extra money.

(i) Euro Prices shown are for information only and are calculated using an exchange rate of 1.538 Euros to the £ as published in the Financial Times on 6th January 2003. Euro prices will be subject to the prevailing exchange rate at the time of purchase. These figures are for information purposes only.

(ii) Limited functionality on Bi-fuel; electronic petrol fuel gauge only.

(iii) Front Cupholders in tunnel console are removed when Front and Rear Ashtray, Cupholder and Front Cigarette Lighter are ordered.

(iv) Four-C Chassis cannot be combined with Load Compensating Suspension or Sports Chassis.

(v) Dolby and Pro Logic Surround Sound[™] are trademarks of Dolby Laboratories Licensing Corporation.

(vi) Indicates total fitted price. At participating dealers only. To find out who is participating dealer contact the Volvo Helpline Number on 0800 400 430.

(vii) Cupholder in Dashboard is removed when Dual Band Integrated GSM Telephone is ordered.

(viii) When 17" alloy wheels are ordered on 2.4 (140/170bhp) and D5, standard chassis is upgraded from Comfort to Dynamic at no extra charge.

	Basic £	VAT £	Rec Retail Price £	Rec Retail Price € ⁹⁾	S	SE	EXECUTIVE
SAFETY & SECURITY							
Delete Passenger Airbag	-	-	-	-	nco	nco	nco
Laminated Side Windows	£255.32	£44.68	£300.00	€461.40	o	o	o
Dark Tinted Glass	£161.70	£28.30	£190.00	€292.22	n/a	n/a	o
IR (Infrared) Reflective Glass Windscreen	£127.66	£22.34	£150.00	€230.70	o	o	o
Inclination Sensor	£106.38	£18.62	£125.00	€192.25	o	o	o
Integrated Child Seat (Rear Seat Armrest)	£110.64	£19.36	£130.00	€199.94	o	o	n/a
INTERIOR							
Automatic Transmission (2.0T, 2.4, D5, Bi-fuel & 2.5T)	£936.17	£163.83	£1,100.00	€1,691.80	o	o	n/a
Speed Dependent Steering System (not Bi-fuel & D5)	£191.49	£33.51	£225.00	€346.05	o	o	o
Electric Glass Tilt & Slide Sunroof	£595.74	£104.26	£700.00	€1,076.60	o	o	o
Sun Curtain (Rear Shelf - Manual)	£85.11	£14.89	£100.00	€153.80	o	o	n/a
Sun Curtain (Rear Side Doors - Manual)	£85.11	£14.89	£100.00	€153.80	o	o	o
Electric Folding Door Mirrors with Ground Lights	£170.21	£29.79	£200.00	€307.60	o	●	●
Autodimming Rear View Mirror	£170.21	£29.79	£200.00	€307.60	o	●	●
Front and Rear Ashtray, Cupholder and Front Cigarette Lighter ^(m)	-	-	-	-	nco	nco	nco
Rear Cupholders	£29.79	£5.21	£35.00	€53.83	o	o	●
Luggage Holder, Retractable in Luggage Compartment	£85.11	£14.89	£100.00	€153.80	o	●	●
Electric Driver's Seat (with Memory) and Door Mirror Memory	£510.64	£89.36	£600.00	€922.80	o	●	n/a
Electric Driver and Passenger Seats (with Driver's Memory) and Door Mirror Memory	£1,021.28	£178.72	£1,200.00	€1,845.60	o	u (£600)	●
Electric Folding Rear Headrests	£102.13	£17.87	£120.00	€184.56	o	o	●
Heated Front Seats	£127.66	£22.34	£150.00	€230.70	o	o	●
3-Spoke Walnut Wood/Leather Steering Wheel with Walnut Wood Trim & Gear Knob	£629.79	£110.21	£740.00	€1,138.12	o	o	u (£240)
Mesh Aluminium Trim and Gear Knob	-	-	-	-	nco	nco	n/a
Walnut Wood Trim and Gear Knob	£425.53	£74.47	£500.00	€769.00	o	o	●
Luxury Floor Mats	£85.11	£14.89	£100.00	€153.80	o	o	n/a
Kalmar Textile/Leather Sports Upholstery	£331.91	£58.09	£390.00	€599.82	o	n/a	n/a
Leather-faced Upholstery	£800.00	£140.00	£940.00	€1,445.72	o	●	n/a
Leather-faced Sports Upholstery	£885.11	£154.89	£1,040.00	€1,599.52	o	u (£100)	n/a
Bergen Alcantara/Leather Sports Upholstery	£1,234.04	£215.96	£1,450.00	€2,230.10	o	u (£510)	n/a
Soft Leather Sports Upholstery	£1,319.15	£230.85	£1,550.00	€2,383.90	o	u (£610)	n/a
HU-801 RDS 4 x CD Radio with Dolby Pro Logic Surround Sound ^(m) , High Performance 4 x 50W Amplifier and 9 Speakers	£425.53	£74.47	£500.00	€769.00	o	●	●
HU-801 RDS 4 x CD Radio with Dolby Pro Logic Surround Sound ^(m) , Premium Sound 4 x 75W Amplifier and 8 Dynaudio Speakers plus 1 x Centre Surround Speaker	£723.40	£126.60	£850.00	€1,307.30	o	u (£350)	u (£350)
4 x 50W Amplifier for HU-601	£127.66	£22.34	£150.00	€230.70	o	●	n/a
10 x CD Rear Autochanger (including Prewiring)	£297.87	£52.13	£350.00	€538.30	o	o	o
Prewiring for 10 x CD Rear Autochanger	£42.55	£7.45	£50.00	€76.90	o	o	o
RTI Navigation System, Remote Control with Europe DVD Map, without TV	£1,872.34	£327.66	£2,200.00	€3,383.60	o	o	●
RTI Navigation System, Remote Control with Europe DVD Map and TV	£2,297.87	£402.13	£2,700.00	€4,152.60	o	o	n/a
Dual Band Integrated GSM Telephone ^(m)	£595.74	£104.26	£700.00	€1,076.60	o	o	o
Hands-free Phone System ^(m)	£200.00	£35.00	£235.00	€361.43	o	o	o
Hands-free Phone System (inc Audio Mute Function) ^(m)	£255.32	£44.68	£300.00	€461.40	o	o	o
EXTERIOR							
Black Paint (Solid)	£212.77	£37.23	£250.00	€384.50	o	o	o
Metallic/Pearlescent Paint	£425.53	£74.47	£500.00	€769.00	o	o	o
16" Phoenix Alloy Wheels - 215/55 R16 91W Tyres	-	-	-	-	●	nco	n/a
16" Sirius Alloy Wheels - 215/55 R16 91W Tyres	-	-	-	-	nco	nco	n/a
17" Stentor Alloy Wheels - 225/50 R17 94Y Tyres	£255.32	£44.68	£300.00	€461.40	o	●	nco
17" Interceptor Alloy Wheels - 225/50 R17 94Y Tyres	£255.32	£44.68	£300.00	€461.40	o	nco	●
18" (BBS) Nebula Alloy Wheels - 235/40 R18 Tyres with Active Four-C Chassis (not 2.4 (140/170), 2.9 or Bi-fuel)	£2,063.83	£361.17	£2,425.00	€3,729.65	o	u (£2,125)	u (£2,125)
18" Capella Alloy Wheels - 235/40 R18 Tyres with Active Four-C Chassis (not 2.4 (140/170), 2.9 or Bi-fuel)	£2,063.83	£361.17	£2,425.00	€3,729.65	o	u (£2,125)	u (£2,125)
Alloy Spare Wheel (to Match Fitted Wheels) (not with 17", 18" or Bi-fuel)	£140.43	£24.57	£165.00	€253.77	o	n/a	n/a
Large Steel Spare Wheel (not with 17", 18" or Bi-fuel)	£85.11	£14.89	£100.00	€153.80	o	n/a	n/a
Headlamp Wash/Wipe	£127.66	£22.34	£150.00	€230.70	o	o	●
Bi-Xenon (Gas Discharge) Headlamps with Wash/Wipe	£553.19	£96.81	£650.00	€999.70	o	o	o
Towbar - Fixed Type with 7 Pin Electrics ^(m)	£243.69	£42.65	£286.34	€440.39	o	o	o
Towbar - Fixed Type with 13 Pin Electrics ^(m)	£298.09	£52.17	£350.26	€538.70	o	o	o
Towbar - Detachable Type with 7 Pin Electrics ^(m)	£311.78	£54.56	£366.34	€563.43	o	o	o
Towbar - Detachable Type with 13 Pin Electrics ^(m)	£366.18	£64.08	£430.26	€661.74	o	o	o
Park Assist, Rear with Audio Mute	£289.36	£50.64	£340.00	€522.92	o	o	o
Load Compensating Suspension (std. Bi-fuel) ^(m)	£425.53	£74.47	£500.00	€769.00	o	o	o
Lowered Sport Chassis with Load Compensating Suspension (not Bi-fuel) ^{(m) & (n)}	£595.74	£104.26	£700.00	€1,076.60	o	o	n/a
Active Four-C Chassis (Continuously Controlled Chassis Concept) (not Bi-fuel) ^(m)	£936.17	£163.83	£1,100.00	€1,691.80	o	o	o
Visco Differential (2.9 & T6 only)	£255.32	£44.68	£300.00	€461.40	n/a	o	o
Engine Badge Deletion	-	-	-	-	nco	nco	n/a
Rain Sensor - Automatic Windscreen Wiper Activation	£123.40	£21.60	£145.00	€223.01	o	●	●
WINTER PACK							
Heated Front Seats, Headlamp Wash/Wipe and Luxury Floor Mats	£255.32	£44.68	£300.00	€461.40	o	o	n/a
FAMILY PACK							
Integrated Child Seat (Rear Centre Armrest) and Manual Sun Curtains (Rear Shelf & Rear Doors)	£187.23	£32.77	£220.00	€338.36	o	o	n/a
PREMIUM PACK							
Electric Passenger Seat, Electric Folding Rear Headrests, Bergen Leather/Alcantara Sports Upholstery and Walnut Wood Trim	£1,106.38	£193.62	£1,300.00	€1,999.40	n/a	o	n/a
COMMUNICATIONS PACK 1							
Dual Band Integrated GSM Telephone ^(m) , RTI Navigation System, Remote Control with Europe DVD Map	£1,957.45	£342.55	£2,300.00	€3,537.40	o	o	n/a
COMMUNICATIONS PACK 2							
Dual Band Integrated GSM Telephone ^(m) , RTI Navigation System, Remote Control with Europe DVD Map and TV	£2,297.87	£402.13	£2,700.00	€4,152.60	o	o	n/a
SPORTS PACK (2.0T & 2.5T only)^(m)							
18" Nebula (BBS) Alloy Wheels - 235/40 R18 Tyres, Lowered Sports Chassis, Load Compensating Suspension and Speed Dependent Steering System	£1,523.40	£266.60	£1,790.00	€2,753.02	o	n/a	n/a
Upgrade for SE Variant (2.0T, 2.5T & T6 only)^(m)	£1,353.19	£236.81	£1,590.00	€2,445.42	n/a	o	n/a
SPORTS PACK (D5)^(m)							
18" Nebula (BBS) Alloy Wheels - 235/40 R18 Tyres, Lowered Sports Chassis and Load Compensating Suspension	£1,361.70	£238.30	£1,600.00	€2,460.80	o	n/a	n/a
Upgrade for SE Variant (D5)^(m)	£1,191.49	£208.51	£1,400.00	€2,153.20	n/a	o	n/a

ACCESSORIES	Basic £	VAT £	Rec Retail Price £	Rec Retail Price € ⁽ⁱ⁾
EXTERIOR ACCESSORIES (PRICES EXCLUDE FITTING UNLESS SHOWN OTHERWISE)				
Bike Rack (down tube clamp)	£51.06	£8.94	£60.00	€92.27
Bike Rack (servo lift)	£80.85	£14.15	£95.00	€146.11
Bumper Protector	£42.55	£7.45	£50.00	€76.89
Load Basket	£85.11	£14.89	£100.00	€153.81
Load Carrier	£68.09	£11.92	£80.00	€123.05
Mud Flaps (front)	£21.28	£3.72	£25.00	€38.46
Mud Flaps (rear)	£21.28	£3.72	£25.00	€38.46
Roofbox – Sport Time 50 (310 litre volume)	£187.23	£32.77	£220.00	€338.35
Roofbox – Weekender (370 litre volume)	£212.77	£37.23	£250.00	€384.51
Roofbox – Dynamic 65 (405 litre volume)	£229.79	£40.21	£270.00	€415.26
Roofbox – Sport Time 20 (450 litre volume)	£263.83	£46.17	£310.00	€476.78
Roofbox – Dynamic 85 (510 litre volume)	£297.87	£52.13	£350.00	€538.30
Ski/Snowboard Carrier with Slide Rail	£59.58	£10.42	£70.00	€107.66
Snow Chain – standard version (variety available)	£119.15	£20.85	£140.00	€215.32
INTERIOR ACCESSORIES				
Boot Mat – rubber	£72.34	£12.66	£85.00	€130.73
Boot Mat – textile/rubber reversible	£76.60	£13.40	£90.00	€138.43
Coin Compartment	£8.51	£1.49	£10.00	€15.38
Cooler/Hot Box (excludes price for power cable)	£68.09	£11.92	£80.00	€123.05
Fire Extinguisher (exclude installation kit)	£21.28	£3.72	£25.00	€38.46
Load Security Straps (cargo area)	£17.02	£2.98	£20.00	€30.76
Load Securing Net (cargo area)	£59.58	£10.43	£70.00	€107.66
Net Pocket (cargo area)	£25.53	£4.47	£30.00	€46.14
Padded Neck Cushion	£17.02	£2.98	£20.00	€30.76
PC Table for Laptop Computers	£59.58	£10.43	£70.00	€107.67
Rubber Floor Mats (set of four)	£63.83	£11.17	£75.00	€115.35
Sunblind – rear window	£51.06	£8.94	£60.00	€92.27
Sunblind – rear door windows (pair)	£51.06	£8.94	£60.00	€92.27
Table – rear centre armrest	£17.02	£2.98	£20.00	€30.76
CHILD SEATS				
Child Booster Cushion	£29.79	£5.21	£35.00	€53.83
Child Booster Backrest (to go with above)	£29.79	£5.21	£35.00	€53.83
Padded Upholstery – for booster seat and headrest	£51.06	£8.94	£60.00	€92.27

For further information and a complete list of all Volvo Accessories, just take a look at the new Accessory website at www.volvocars.co.uk/accessories

UPHOLSTERY	Upholstery Code	Upholstery Colour	Dashboard Top/ Door Panel Colour ⁽ⁱⁱ⁾	Door Insert Colour	Headliner Colour
Sarek Plush ⁽ⁱⁱⁱ⁾	845A	Light Sand	Beige	Light Sand	Light Sand
	8470	Off Black	Off Black	Off Black	Granite
	8491	Arena	Oak	Arena	Arena
Kalmar Textile/ Leather Sports ⁽ⁱⁱⁱ⁾	8G5A	Light Sand	Beige	Light Sand	Light Sand
	8G70	Off Black	Off Black	Off Black	Granite
	8G91	Arena	Oak	Arena	Arena
Leather-faced Sports ⁽ⁱⁱⁱ⁾	8A5A	Light Sand	Beige	Light Sand	Light Sand
	8A70	Off Black	Off Black	Off Black	Granite
	8A91	Arena	Oak	Arena	Arena
Leather-faced ⁽ⁱⁱⁱ⁾	895A	Light Sand	Beige	Light Sand	Light Sand
	8970	Off Black	Off Black	Off Black	Granite
	8991	Arena	Oak	Arena	Arena
Bergen Alcantara*/ Leather Sports ⁽ⁱⁱⁱ⁾	885A	Light Sand	Beige	Light Sand	Light Sand
	8870	Off Black	Off Black	Off Black	Granite
	8891	Arena	Oak	Arena	Arena
Soft Leather Sports ⁽ⁱⁱⁱ⁾	875A	Light Sand	Beige	Light Sand	Light Sand
	8770	Off Black	Off Black	Off Black	Granite
	8791	Arena	Oak	Arena	Arena



16" Sirius



16" Phoenix



17" Stentor



17" Interceptor



18" Nebula



18" Capella

INTERIOR INLAYS



Walnut Wood Effect



Mesh Aluminium



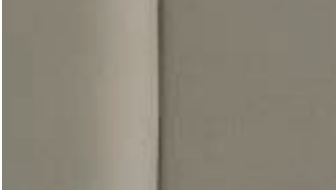


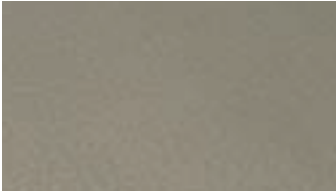
Walnut Wood

(i) Euro prices shown are for information only and are calculated using an exchange rate of 1.538 Euros to the £, as published in the Financial Times on 6th January 2003. Euro prices will be subject to the prevailing exchange rate at the time of purchase. These figures are for information purposes only.



(ii) Denotes the colour of the door panels above the Inlay Trim.

(iii) Not available on Executive.

UPHOLSTERY

BEIGE/LIGHT SAND	OAK/ARENA	OFF BLACK
 Sarek plush Light Sand (845A)	 Sarek plush Arena (8491)	 Sarek plush Off Black (8470)
 Kalmar Textile/Leather Sports Light Sand (8G5A)	 Kalmar Textile/Leather Sports Arena (8G91)	 Kalmar Textile/Leather Sports Off Black (8G70)
 Leather-faced/Leather-faced Sports Light Sand (895A/8A5A)	 Leather-faced/Leather-faced Sports Arena (8991/8A91)	 Leather-faced/Leather-faced Sports Off Black (8970/8A70)
 Bergen Alcantara*/Leather Sports Light Sand (885A)	 Bergen Alcantara*/Leather Sports Arena (8891)	 Bergen Alcantara*/Leather Sports Off Black (8870)
 Soft Leather Light Sand (875A)	 Soft Leather Arena (8791)	 Soft Leather Off Black (8770)

EXECUTIVE

 Executive Soft Leather Arena (8F91)	 Executive Soft Leather Off Black (8F70)
--	---

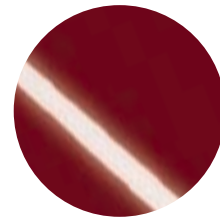
NB It is not possible to reproduce exact original shades in printed matter.

CHOOSE YOUR COLOUR

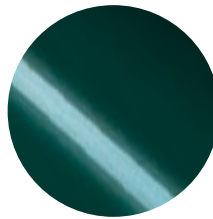
WITH A WIDE RANGE OF EXTERIOR COLOURS YOUR VOLVO S80 CAN REFLECT YOUR PERSONAL TASTE.



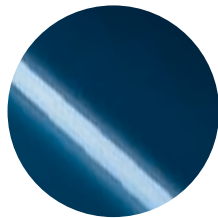
019
Black Stone⁽ⁱ⁾



454
Ruby Red pear⁽ⁱ⁾



447
Scarab Green pear⁽ⁱ⁾



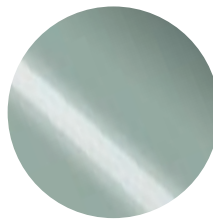
417
Nautic Blue pearl



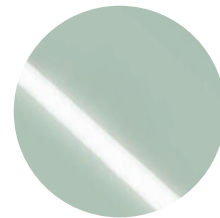
455
Titanium Grey pearl



426
Silver metallic



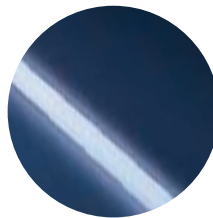
449
Mistral Green metallic



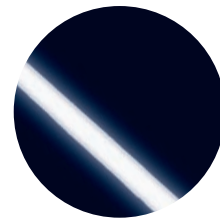
456
Crystal Green Pearl⁽ⁱ⁾



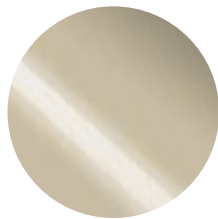
443
Moondust metallic



450
Cosmos Blue metallic⁽ⁱ⁾



613
Deep Blue⁽ⁱ⁾



446
Ash Gold pearl



452
Black Sapphire metallic



614
Ice White⁽ⁱ⁾

(i) Not available with the Volvo S80 Executive.

NB It is not possible to reproduce exact original shades in printed matter. Please ask your Volvo dealer to show you samples.