

The comprehensive standard specification includes electronic climate control, 16" Mimas alloy wheels, CD player and 8 speakers, STC (Stability and Traction Control), leather steering wheel plus all the safety features you would expect from Volvo.

	<b>Basic £</b>	<b>VAT £</b>	<b>Rec Retail Price £</b>	<b>On The Road Price £</b>	<b>On The Road Price w* Euros</b>
<b>PETROL</b>					
2.0T S	£16,455.32	£2,879.68	£19,335.00	£19,995.00	€30,472.38
2.4T S	£18,297.87	£3,202.13	£21,500.00	£22,160.00	€33,771.84
<b>DIESEL</b>					
D5 S	£17,208.51	£3,011.49	£20,220.00	£20,875.00	€31,813.50
<b>BI-FUEL</b>					
2.4 Bi-Fuel (LPG^†) S†	£17,106.38	£2,993.62	£20,100.00	£19,611.60	€29,888.08
2.4 Bi-Fuel (CNG#) S†	£17,791.49	£3,113.51	£20,905.00	£19,988.09	€30,461.85

The SE model offers electric driver's seat, Leather-faced Sports upholstery, 17" Tethys alloy wheels, 4 x CD player with Dolby Pro Logic Surround Sound™~ and 9 speakers.

	<b>Basic £</b>	<b>VAT £</b>	<b>Rec Retail Price £</b>	<b>On The Road Price £</b>	<b>On The Road Price w* Euros</b>
<b>PETROL</b>					
2.0T SE	£18,327.66	£3,207.34	£21,535.00	£22,195.00	€33,825.18
2.4T SE	£19,872.34	£3,477.66	£23,350.00	£24,010.00	€36,591.24
T5 SE	£21,817.02	£3,817.98	£25,635.00	£26,295.00	€40,073.58
<b>DIESEL</b>					
D5 SE	£19,080.85	£3,339.15	£22,420.00	£23,075.00	€35,166.30
<b>BI-FUEL</b>					
2.4 Bi-Fuel (LPG^†) SE†	£18,765.96	£3,284.04	£22,050.00	£21,561.60	€32,859.88
2.4 Bi-Fuel (CNG#) SE†	£19,451.06	£3,403.94	£22,855.00	£21,938.09	€33,433.65

~ Dolby and Pro Logic Surround Sound™ are trademarks of Dolby Laboratories Licensing Corporation.

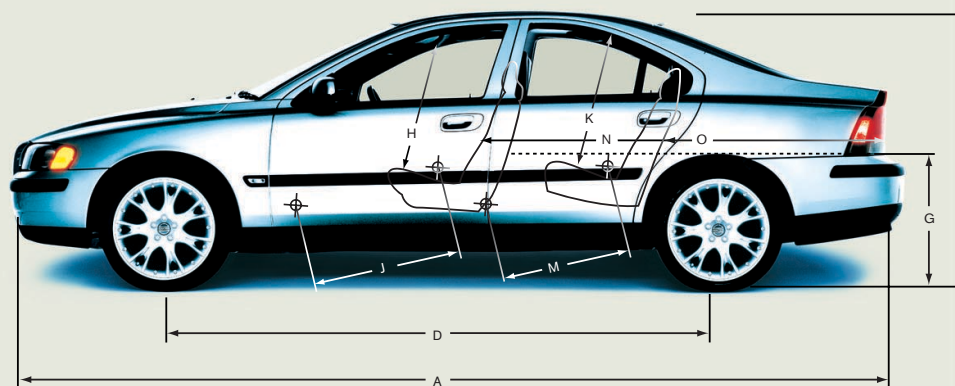
\* Euro prices shown are for information only and are calculated using an exchange rate of 1.524 Euros to the £, as published in the Financial Times on 1st July 2002.

^ Liquefied Petroleum Gas.

# Compressed Natural Gas.

† The 'On The Road' price includes a subsidy of £1,123.40 on LPG and £1,531.91 on CNG taking fully into account any PowerShift grants available. Conditions apply – please see dealer for details.

ENGINE	2.0T	2.4T	D5	T5	2.4 Bi-Fuel (LPG <sup>^</sup> )	2.4 Bi-Fuel (CNG#)
Configuration	Transverse – 20 valve	Transverse – 20 valve	Transverse – 20 valve	Transverse – 20 valve	Transverse – 20 valve	Transverse – 20 valve
Cylinders	5	5	5	5	5	5
Engine capacity, cc	1984	2435	2401	2319	2435	2435
Bore x stroke, mm	81 x 77	83 x 90	81 x 93	81 x 90	83 x 90	83 x 90
Max. output ECE, bhp/kw/rpm	180/132/5300	200/147/6000	163/120/4000	250/184/5200	140/103/5100 LPG 140/103/4500 Petrol	140/103/5800 CNG 140/103/4500 Petrol
Max. torque ECE, Nm/rpm	240/2200-5300	285/1800-5000	340/1750-3000	330/2400-5200	214/4500	192/4500
Octane rating	95-98 <sup>^</sup> RON unleaded	95-98 <sup>^</sup> RON unleaded	Turbo Diesel	95-98 <sup>^</sup> RON unleaded	95-98 <sup>^</sup> RON unleaded	95-98 <sup>^</sup> RON unleaded
Fuel system	Multipoint fuel injection	Multipoint fuel injection	Multipoint fuel injection	Multipoint fuel injection	Multipoint fuel injection	Multipoint fuel injection
Compression ratio	9.5:1	9.0:1	18.0:1	8.5:1	10.3:1	10.3:1



PERFORMANCE	2.0T		2.4T		D5		T5		2.4 Bi-Fuel (LPG <sup>^</sup> )		2.4 Bi-Fuel (CNG#)	
	Man	Auto	Man	G <sup>^</sup> tronic	Man	Auto	Man	G <sup>^</sup> tronic	Man	Auto	Man	Auto
Top speed, mph	140	134	143	140	130	130	155	152	127 LPG 130 Petrol	124 LPG 127 Petrol	130 CNG 130 Petrol	127 CNG 127 Petrol
Acceleration 0-62mph, sec	8.8	9.5	7.6	8.0	9.5	9.9	6.8	7.1	10.3 LPG 10.2 Petrol	11.2 LPG 11.1 Petrol	10.7 CNG 10.2 Petrol	11.6 CNG 11.1 Petrol

FUEL CONSUMPTION <sup>†</sup>	2.0T		2.4T		D5		T5		2.4 Bi-Fuel (LPG <sup>^</sup> )		2.4 Bi-Fuel (CNG#)	
	Man	Auto	Man	G <sup>^</sup> tronic	Man	Auto	Man	G <sup>^</sup> tronic	Man	Auto	Man	Auto
(Government Approved) Mpg (1/100km)*												
Urban	22.1 (12.8)	19.5 (14.5)	22.2 (12.7)	19.3 (14.6)	32.5 (8.7)	26.4 (10.7)	22.2 (12.7)	19.5 (14.5)	22.4 (12.6) P 18.1 (15.6) LPG	20.2 (14.0) P 15.3 (18.5) LPG	23.5 (12.0) P 21.9 (12.9) CNG	19.9 (14.2) P 19.6 (14.4) CNG
Extra Urban	39.8 (7.1)	37.2 (7.6)	39.8 (7.1)	38.2 (7.4)	54.3 (5.2)	48.7 (5.8)	38.7 (7.3)	37.7 (7.5)	39.8 (7.1) P 31.0 (9.1) LPG	39.8 (7.1) P 29.4 (9.6) LPG	40.9 (6.9) P 42.2 (6.7) CNG	40.4 (7.0) P 38.2 (7.4) CNG
Combined	30.7 (9.2)	28.0 (10.1)	30.7 (9.2)	28.2 (10.0)	43.5 (6.5)	37.2 (7.6)	30.4 (9.3)	27.7 (10.2)	31.0 (9.1) P 24.6 (11.5) LPG	29.4 (9.6) P 21.9 (12.9) LPG	32.1 (8.8) P 31.4 (9.0) CNG	29.4 (9.6) P 28.2 (10.0) CNG
CO <sub>2</sub> g/km	218	240	220	238	171	201	222	240	217 P 186 LPG	231 P 209 LPG	211 P 161 CNG	231 P 178 CNG
VED (Vehicle Excise Duty) Band	E	E	E	E	D	E	E	E	E	E	C	D

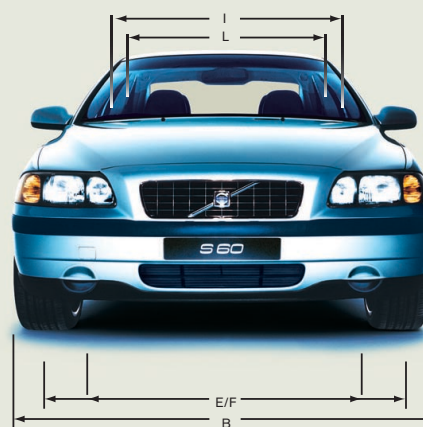
INSURANCE GROUPS	2.0T	2.4T	D5	T5	2.4 Bi-Fuel (LPG <sup>^</sup> )	2.4 Bi-Fuel (CNG#)
Volvo S60	14	15	14	16	14	14

WEIGHTS	2.0T	2.4T	D5	T5	2.4 Bi-Fuel (LPG <sup>^</sup> )	2.4 Bi-Fuel (CNG <sup>#</sup> )
Min. kerb weight, kg (actual kerb weight dependent on spec.)	1440	1440	1515	1440	1490	1509
Max. possible towing weight braked, kg	1600	1600	1600	1600	1600	1600
Max. towing weight unbraked approx. kg**	750	750	750	750	750	750
Max. total weight, kg	2050	2050	2050	2050	2050	2050
Max. roof load, kg	100	100	100	100	100	100
Max. payload, kg (dependent on spec. of car)	610	610	535	610	560	541

TRANSMISSION	All models
Manual	5
Automatic	5~

POWER STEERING SYSTEM	All models
(rack & pinion) Turning circle, m (ft) 195 – 225 section tyres	10.8 – 11.8 (35'4" – 38'7")

EXTERIOR (mm)		INTERIOR (mm)	
A Overall length	4576	H Front seat max. headroom >	984
B Overall width (exc. wing mirrors)	1804	I Front seats width	1427
C Unladen height	1428	J Front seat max. legroom	1082
D Wheelbase length	2715	K Rear seat max. headroom >	962
E Front track width	1551	L Rear seats width	1409
F Rear track width	1548	M Rear seat max. legroom	847
G Rear Load Height	661	N Load length luggage 2 seat mode	1727
		O Load length luggage 5 seat mode	1047



BRAKES	All models	2.0T/ 2.4T/T5	D5	2.4 Bi-Fuel (LPG <sup>^</sup> /CNG <sup>#</sup> )
Full load stopping distance 62 – 0 mph, m (ft)	42 (138)			
Disc diameter mm, front	16" – 305	286	286	Ventilated Ventilated
Disc diameter mm, rear	16" – 288	288	288	

LUGGAGE COMPARTMENT	All models
Volume, litres (cu. ft.)	394 (13.9)
Volume, rear seats down, litres (cu. ft.)	808 (28.5)

PERFORMANCE	All models
Drag co-efficient	0.28

FUEL TANK	Non Bi-Fuel models	S60 2.4 Bi-Fuel (LPG <sup>^</sup> )	S60 2.4 Bi-Fuel (CNG <sup>#</sup> )
Volume, litres (gallons)	70 (15.4)	50 (11.0) LPG	23 Nm <sup>3</sup> (Slow Fill) CNG
		29 (6.4) Petrol	29 (6.4) Petrol

<sup>^</sup> Liquefied Petroleum Gas.

<sup>#</sup> Compressed Natural Gas.

<sup>†</sup> These results do not express or imply any guarantee of the fuel consumption of a particular car as there are inevitable differences between individual cars of the same model. Additionally driving style, traffic conditions, as well as the age and mileage and standard of maintenance will affect a car's fuel consumption.

<sup>\*</sup> The Urban fuel consumption figure is based on typical city driving, including starting the car from cold. The Extra Urban figure is based on typical motorway driving and cruising. The Combined figure averages the consumption across both cycles.

<sup>^</sup> For best performance and lowest fuel consumption 98 RON is recommended. 95 RON can be used for normal driving.

\*\* Unbraked towing weight must not exceed 50% of kerb weight up to a maximum of 750 kg.

~ 2.4T, T5 Geartronic transmission is 5 speed.

> Figure quoted without sunroof

**Notes**

All weights for any specific vehicle will vary according to standard and optional equipment fitted.

A weighbridge must be used to determine specific weights.

Data valid for manual transmission unless specified.

All measurements in mm.

NB Some of the information in this price list may not be correct due to product changes which may have occurred since it was printed. Some of the equipment described or shown may now be available at extra cost. Before ordering, please ask your Volvo dealer for the latest information. The manufacturer reserves the right to make changes at any time, without notice, to price, colour, materials, specifications and models.

Volvo Car UK Limited, Globe Park, Marlow, Buckinghamshire, SL7 1YQ

	S	SE
<b>SAFETY &amp; SECURITY</b>		
Dual Stage Driver and Passenger Airbags	•	•
SIPS (Side Impact Protection System)	•	•
SIPS Airbags	•	•
IC (Inflatable Curtain)	•	•
WHIPS (Whiplash Protection System) (Front Seats)	•	•
ABS (Anti-lock Brakes) with EBD (Electronic Brake Distribution)	•	•
STC (Stability and Traction Control)	•	•
DSTC (Dynamic Stability and Traction Control) with Emergency Brake Assistance (Includes Information Centre) (2.4T & T5 only)	•	•
5 Three Point Seat Belts	•	•
Seat Belt Pre-tensioners (Front and Rear)	•	•
Head Restraints – All 5 Seats	•	•
ISOFIX Child Seat Preparation	•	•
Anti-theft Alarm and Immobiliser	•	•
Remote Control Central Locking Including Fuel Flap with Deadlocking System	•	•
Mass Movement Sensor	•	•
Day Running Lights	•	•
Headlamp Levelling System	•	•
High Level LED Brake Light	•	•
Autodimming Rear View Mirror	•	•
Side Marker Bumper Illumination	•	•
Home Safe and Approach Lighting	•	•
Steering Wheel Remote	•	•
<b>INTERIOR</b>		
ECC (Electronic Climate Control) with AQS (Air Quality System)	•	•
B Pillar Ventilation	•	•
Pollen Filter	•	•
Exterior Temperature Gauge	•	•
Information Centre (Bi-Fuel** & 2.4T only)	•	•
Cruise Control	•	•
Svängen Vinyl/Textile Sports Upholstery (2.0T, Bi-Fuel & D5 only)	•	•
Nidingen Leather/Textile Sports Upholstery (2.4T only)	•	•
Select Leather-faced Sports Upholstery	•	•
Leather Steering Wheel, Gear Knob and Handbrake Lever	•	•
Walnut Wood Effect Trim	•	•
Space Ball Gear Knob – Manual only (T5 only)	•	•
Illuminated Ignition Lock	•	•
Electric Front and Rear Windows	•	•
Electrically Adjustable and Heated Door Mirrors	•	•
Electric Driver's Seat (with Memory) and Door Mirror Memory	•	•
Height Adjustable Driver and Passenger Seats	•	•
Height and Reach Adjustable Steering Column	•	•
HU-603 RDS Single Slot CD Radio Cassette with 8 Speakers	•	•
HU-803 RDS 4 CD Radio with Dolby Pro Logic Surround Sound™ ~ with 4 x 50W Amplifier and 9 Speakers	•	•
Cupholder in Dashboard	•	•
Two Cupholders in Tunnel Console^	•	•
Front and Rear Reading Lamps	•	•
Illuminated Passenger Vanity Mirror	•	•
Illuminated Driver's Vanity Mirror	•	•
Grocery Bag Holder (not Bi-Fuel)	•	•
Coinbox	•	•
Rear Waste Bin	•	•
<b>EXTERIOR</b>		
16" Mimas Alloy Wheels – 205/55 R16 91W Tyres (2.0T, D5 & Bi-Fuel only)	•	•
16" Ursa Alloy Wheels – 215/55 R16 91W Tyres (2.4T only)	•	•
17" Tethys Alloy Wheels – 225/45 R17 90W Tyres	•	•
Tempa Spare Wheel (not Bi-Fuel#)	•	•
Locking Wheel Nuts	•	•
Front Fog Lights	•	•
Sports Chassis	•	•
Dynamic Chassis (Bi-Fuel only)	•	•
Load Compensating Suspension (Bi-Fuel only)	•	•
Black Grille	•	•
Tow Bar Preparation	•	•



• = standard

\*\* Limited functionality on Bi-Fuel; electronic petrol fuel gauge only.

^ This item is deleted when Front and Rear Ashtray, Cupholder in Tunnel Console and Front Cigarette Lighter are ordered.

# Tyre Weld supplied in lieu of Tempa Spare Wheel.

~ Dolby and Pro Logic Surround Sound™ are trademarks of Dolby Laboratories Licensing Corporation.

	Basic £	VAT £	Rec Retail Price £	Rec Retail Price €*	S	SE
<b>SAFETY &amp; SECURITY</b>						
Delete Passenger Airbag	-	-	-	-	nco	nco
DSTC (Dynamic Stability and Traction Control) with Emergency Brake Assistance (Includes Information Centre)	£527.66	£92.34	£620.00	€944.88	o	u (€300)
Laminated Side Windows	£255.32	£44.68	£300.00	€457.20	o	o
Power Child Locks – Rear Doors	£63.83	£11.17	£75.00	€114.30	o	o
Integrated Booster Cushion (Rear Centre Armrest)	£110.64	£19.36	£130.00	€198.12	o	o
Rain Sensor – Automatic Windscreen Wiper Activation	£123.40	£21.60	£145.00	€220.98	o	o
Inclination Sensor	£106.38	£18.62	£125.00	€190.50	o	o
Headlamp Wash/Wipe	£127.66	£22.34	£150.00	€228.60	o	o
Front Fog Lights	£153.19	£26.81	£180.00	€274.32	o	•
Load Compensating Suspension	£425.53	£74.47	£500.00	€762.00	o	o
Autodimming Rear View Mirror	£170.21	£29.79	£200.00	€304.80	o	•
Electric Folding Rear Headrests	£102.13	£17.87	£120.00	€182.88	o	o
First Aid Kit	£17.02	£2.98	£20.00	€30.48	o	o
<b>INTERIOR</b>						
Automatic Transmission (not 2.4T & T5)	£936.17	£163.83	£1,100.00	€1,676.40	o	o
Geartronic Transmission (2.4T & T5 only)	£1,063.83	£186.17	£1,250.00	€1,905.00	o	o
Electric Driver's Seat (with Memory) and Door Mirror Memory	£510.64	£89.36	£600.00	€914.40	o	•
Electric Driver and Passenger Seats (with Driver's Memory) and Door Mirror Memory	£1,021.28	£178.72	£1,200.00	€1,828.80	o	u (€600)
Heated Front Seats	£127.66	£22.34	£150.00	€228.60	o	o
Electric Folding Door Mirrors with Ground Lights	£170.21	£29.79	£200.00	€304.80	o	o
Illuminated Driver's Vanity Mirror	£17.02	£2.98	£20.00	€30.48	o	•
Electric Glass Tilt & Slide Sunroof	£595.74	£104.26	£700.00	€1,066.80	o	o
Sun Curtain Rear Shelf – Manual	£85.11	£14.89	£100.00	€152.40	o	o
Front and Rear Ashtray, Cupholder and Front Cigarette Lighter	-	-	-	-	nco	nco
Rear Cupholders – Armrest	£29.79	£5.21	£35.00	€53.34	o	o
Berghamn Plush Upholstery	£221.28	£38.72	£260.00	€396.24	o	n/a
Nidingen Leather/Textile Sports Upholstery (standard 2.4T)	£553.19	£96.81	£650.00	€990.60	o	n/a
Select Leather-faced Upholstery	£1,021.28	£178.72	£1,200.00	€1,828.80	o	nco
Select Leather-faced Sports Upholstery	£1,106.38	£193.62	£1,300.00	€1,981.20	o	•
3-Spoke Wood/Leather Steering Wheel	£204.26	£35.74	£240.00	€365.76	o	o
Space Ball Gear Knob – Manual only (std. T5)	£63.83	£11.17	£75.00	€114.30	o	o
Walnut Wood Effect Trim	£212.77	£37.23	£250.00	€381.00	o	•
Black Mesh Trim	£212.77	£37.23	£250.00	€381.00	o	nco
Mesh Aluminium Trim	£212.77	£37.23	£250.00	€381.00	o	nco
Information Centre (not 2.4T or Bi-Fuel)	£272.34	£47.66	£320.00	€487.68	o	•
HU-803 RDS 4 CD Radio with Dolby Surround Sound™ ~ , 4 x 50W Amplifier and 9 Speakers	£212.77	£37.23	£250.00	€381.00	o	•
HU-803 RDS Audio Max 4 CD Radio with Dolby Surround Sound™ ~ , 4 x 75W Amplifier and 13 Speakers	£425.53	£74.47	£500.00	€762.00	o	u (€250)
4 x 50W Amplifier	£127.66	£22.34	£150.00	€228.60	o	•
RTI Navigation System, Remote Control with Europe DVD Map, without TV	£2,127.66	£372.34	£2,500.00	€3,810.00	o	o
RTI Navigation System, Remote Control with Europe DVD Map and TV	£2,382.98	£417.02	£2,800.00	€4,267.20	o	o
Dual Band Integrated GSM Telephone with Coinholder<	£765.96	£134.04	£900.00	€1,371.60	o	o
Nokia/Ericsson Mobile Phone Kit (see your dealer for details)	-	-	-	-	o	o
Rear Waste Bin	£17.02	£2.98	£20.00	€30.48	o	•
Luxury Floor Mats	£85.11	£14.89	£100.00	€152.40	o	o
Grocery Bag Holder (not Bi-Fuel)	£85.11	£14.89	£100.00	€152.40	o	•
<b>EXTERIOR</b>						
Bi-Xenon (Gas Discharge) Headlamps with Wash/Wipe	£553.19	£96.81	£650.00	€990.60	o	o
16" Canaveral Alloy Wheels – 205/55 R16 91W Tyres	-	-	-	-	nco	n/a
16" Mimas Alloy Wheels – 205/55 R16 91W Tyres (not 2.4T)	-	-	-	-	•	nco
16" Ursa Alloy Wheels – 215/55 R16 91W Tyres (standard on 2.4T)	£42.55	£7.45	£50.00	€76.20	o	o
16" Sirius Alloy Wheels – 215/55 R16 91W Tyres (2.4T nco)	£42.55	£7.45	£50.00	€76.20	o	n/a
17" Tethys Alloy Wheels – 225/45 R17 91W Tyres	£255.32	£44.68	£300.00	€457.20	o/u (€250)	•
17" Thor Alloy Wheels – 225/45 R17 90W Tyres	£255.32	£44.68	£300.00	€457.20	o/u (€250)	nco
Alloy Spare Wheel (To Match Fitted Wheels) (Not with 17")	£140.43	£24.57	£165.00	€251.46	o	o
Large Steel Spare Wheel (Not with 17")	£85.11	£14.89	£100.00	€152.40	o	o
Park Assist, Rear#	£329.64	£57.69	£387.33	€590.29	o	o
Towbar – Fixed type with 7 Pin Electrics#	£264.97	£46.37	£311.34	€474.48	o	o
Towbar – Fixed type with 13 Pin Electrics#	£319.38	£55.89	£375.27	€571.91	o	o
Towbar – Detachable type with 7 Pin Electrics#	£350.29	£61.30	£411.59	€627.26	o	o
Towbar – Detachable type with 13 Pin Electrics#	£404.70	£70.82	£475.52	€724.69	o	o
Lowered Sport Chassis with Load Compensating Suspension	£510.64	£89.36	£600.00	€914.40	o	o
Black Paint (Solid)	£212.77	£37.23	£250.00	€381.00	o	o
Metallic/Pearlescent Paint	£425.53	£74.47	£500.00	€762.00	o	o
Engine Badge Deletion	-	-	-	-	nco	nco
<b>WINTER PACK</b>						
Heated Front Seats, Headlamp Wash/Wipe, Luxury Floor Mats and Rain Sensor	£319.15	£55.85	£375.00	€571.50	o	o
<b>PREMIUM PACK</b>						
Electric Driver and Passenger Seats (with Driver's Memory) and Door Mirror Memory, Electric Folding Door Mirrors with Ground Lights	£936.17	£163.83	£1,100.00	€1,676.40	o	n/a
<b>Upgrade for SE Variant</b>	£595.74	£104.26	£700.00	€1,066.80	n/a	o
<b>COMMUNICATIONS PACK</b>						
HU-803 RDS Audio Max 4 CD Radio with Dolby Pro Logic Surround Sound™ ~ , 4 x 75W Amplifier and 13 Speakers, Integrated GSM Telephone, RTI Navigation System, Remote Control with Europe DVD Map and TV	£2,808.51	£491.49	£3,300.00	€5,029.20	o	n/a
<b>Upgrade for SE Variant</b>	£2,553.19	£446.81	£3,000.00	€4,572.00	n/a	o
<b>SPORTS PACK (not Bi-Fuel)</b>						
18" Nebula (BBS) Alloy Wheels, Lowered Sports Chassis and Load Compensating Suspension	£1,361.70	£238.30	£1,600.00	€2,438.40	o	n/a
<b>Upgrade for SE Variant (not Bi-Fuel)</b>	£1,191.49	£208.51	£1,400.00	€2,133.60	n/a	o

\* Euro prices shown are for information only and are calculated using an exchange rate of 1.524 Euros to the £, as published in the Financial Times on 1st July 2002.  
 • = standard o = optional n/a = not available nco = no cost option i.e. a customer can upgrade to that option without paying any extra money. u = upgrade i.e. a customer can upgrade to that option but will pay the difference in price, upgrade price shown in (£).  
 # Indicates total fitted price. At participating dealers only.  
 ^ Two Cupholders in Tunnel Console are removed when Front and Rear Ashtray, Cupholder in Tunnel Console and Front Cigarette Lighter are ordered.  
 < Cupholder in Dashboard is removed when Dual Band Integrated GSM Telephone is ordered.  
 ~ Dolby and Pro Logic Surround Sound™ are trademarks of Dolby Laboratories Licensing Corporation.

VOLVO S60 ACCESSORIES DESCRIPTION	Basic £	VAT £	Rec Retail Price £	Rec Retail Price €*
<b>ACCESSORIES</b>				
Bag Holder	£8.51	£1.49	£10.00	€15.24
Cooler/Hot Box (excludes electric feed cable)	£80.85	£14.15	£95.00	€144.78
PC Table	£136.17	£23.83	£160.00	€243.84
Comfort Pillow	£17.02	£2.98	£20.00	€30.48
Bag Holder (cargo compartment)	£11.06	£1.94	£13.00	€19.81
Net Pocket for Side Panel (right & left available)	£25.53	£4.47	£30.00	€45.72
Rubber Floor Mats (set of 4)	£42.55	£7.45	£50.00	€76.20
Luggage Compartment Mat (textile)	£80.85	£14.15	£95.00	€144.78
Luggage Compartment Mat (rubber)	£80.85	£14.15	£95.00	€144.78
Sun Blind (rear door)	£80.85	£14.15	£95.00	€144.78
First Aid Kit	£17.02	£2.98	£20.00	€30.48
Load Carrier	£69.79	£12.21	£82.00	€124.97
Mudflaps (rear)	£25.53	£4.47	£30.00	€45.72
Mudflaps (front)	£21.28	£3.72	£25.00	€38.10
Surf-Board Carrier	£33.19	£5.81	£39.00	€59.44
Bicycle Rack – New version (variety available)	£49.56	£8.67	£58.23	€88.74
Roof Boxes "Weekender" (variety available)	£229.79	£40.21	£270.00	€411.48
<b>CHILD ACCESSORIES</b>				
Child Booster Cushion	£36.60	£6.41	£43.01	€65.55
Child Booster Backrest	£47.66	£8.34	£56.00	€85.34

UPHOLSTERY	Upholstery Code	Upholstery Colour	Dashboard Top/ Door Panel Colour <sup>Δ</sup>	Door Insert Colour	Headliner Colour
Svagen Vinyl/	9270	Off Black	Off Black	Off Black	Granite
Textile Sports	9280	Oak	Oak	Oak	Arena
Berghamn Plush	9451	Light Sand	Beige	Light Sand	Light Sand
	9470	Off Black	Off Black	Off Black	Granite
	9480	Oak	Oak	Oak	Arena
Nidingen Leather/ Textile Sports	9351	Light Sand	Beige	Light Sand	Light Sand
	9370	Off Black	Off Black	Off Black	Granite
	9372	Off Black/Sisal	Off Black	Sisal	Arena
	9373	Off Black/Indigo	Off Black	Indigo	Granite
	9381	Arena	Oak	Arena	Arena
Select Leather-faced	9951	Light Sand	Beige	Light Sand	Light Sand
	9970	Off Black	Off Black	Off Black	Granite
	9972	Sisal	Off Black	Sisal	Arena
	9980	Oak	Oak	Oak	Arena
	9981	Arena	Oak	Arena	Arena
Select Leather-faced Sports	9A51	Light Sand	Beige	Light Sand	Light Sand
	9A70	Off Black	Off Black	Off Black	Granite
	9A72	Sisal	Off Black	Sisal	Arena
	9A80	Oak	Oak	Oak	Arena
	9A81	Arena	Oak	Arena	Arena

Δ Denotes the colour of the door panels above the Inlay Trim. • Not available on Executive.



16" Mimas



16" Canaveral



16" Ursa



16" Sirius



17" Tethys

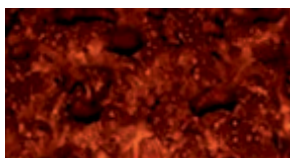


17" Thor

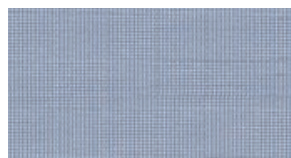


18" Nebula

## INTERIOR INLAYS



Walnut Wood Effect



Mesh Aluminium



Black Mesh

\* Euro prices shown are for information only and are calculated using an exchange rate of 1.524 Euros to the £, as published in the Financial Times on 1st July 2002.

# UPHOLSTERY

## CLASSIC DESIGN SEATS

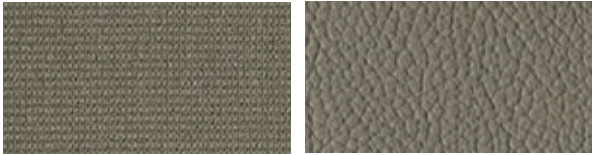
### BEIGE/LIGHT SAND



Berghamn Plush\*  
Light Sand (9451)

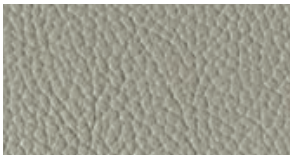
Select Leather  
Light Sand (9951)

### OAK/ARENA



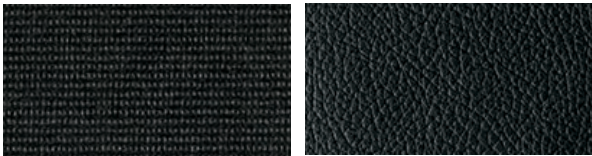
Berghamn Plush\*  
Oak (9480)

Select Leather  
Oak (9980)



Select Leather  
Arena (9981)

### OFF BLACK/SISAL/INDIGO



Berghamn Plush\*  
Off Black (9470)

Select Leather  
Off Black (9970)



Select Leather  
Sisal (9972)

## SPORTS DESIGN SEATS WITH EXTRA SCULPTING AND MORE SIDE SUPPORT

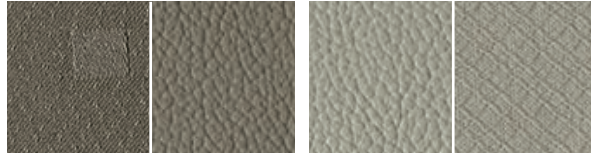
### BEIGE/LIGHT SAND



Nidingen Leather/textile  
Light Sand (9351)

Select Leather Sport  
Light Sand (9A51)

### OAK/ARENA

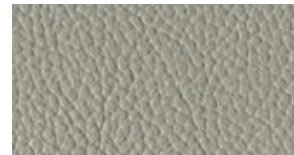


Svangen textile/vinyl\*  
Oak (9280)

Nidingen Leather/textile  
Arena (9381)



Select Leather Sport  
Oak (9A80)



Select Leather Sport  
Arena (9A81)

### OFF BLACK/SISAL/INDIGO

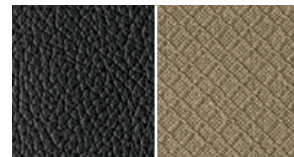


Svangen textile/vinyl\*  
Off Black (9270)

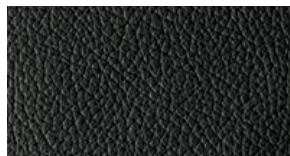
Nidingen Leather/textile  
Off Black (9370)



Nidingen Leather/textile  
Off Black/Indigo (9373)



Nidingen Leather/textile  
Off Black/Sisal (9372)



Select Leather Sport  
Off Black (9A70)



Select Leather Sport  
Sisal (9A72)

\* In combination with the Volvo Premium Sound loudspeaker system, the front door sides are trimmed in Light Sand vinyl

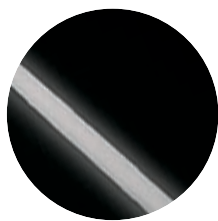
^ In combination with the Volvo Premium Sound loudspeaker system, the front door sides are trimmed in Oak vinyl

# In combination with the Volvo Premium Sound loudspeaker system, the front door sides are trimmed in Off Black vinyl

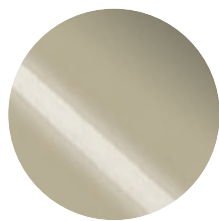
NB It is not possible to reproduce exact original shades in printed matter.

**CHOOSE YOUR COLOUR**

WITH A WIDE RANGE OF EXTERIOR COLOURS YOUR VOLVO S60 CAN REFLECT YOUR PERSONAL TASTE.



**019**  
Black Stone



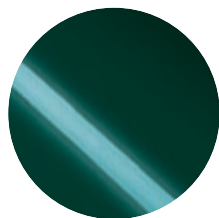
**446**  
Ash Gold pearl



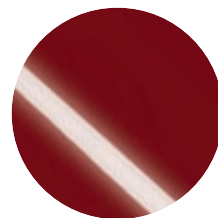
**452**  
Black Sapphire metallic



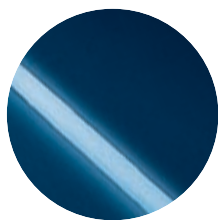
**189**  
Polar White



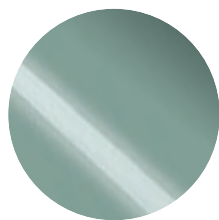
**447**  
Scarab Green pearl



**454**  
Ruby Red pearl



**417**  
Nautic Blue pearl



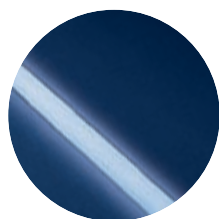
**449**  
Mistral Green metallic



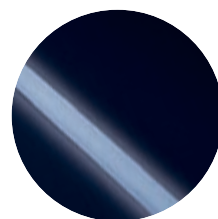
**455**  
Titanium Grey pearl



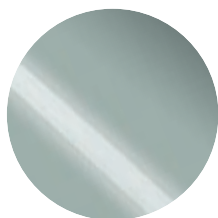
**426**  
Silver metallic



**450**  
Cosmos Blue metallic



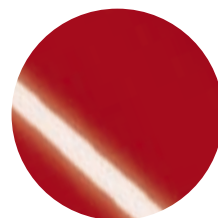
**604**  
Midnight Blue



**444**  
Arctic pearl



**451**  
Maya Yellow pearl



**612**  
Passion Red