

# VOLVO XC70

PRICE AND SPECIFICATION



An aerial photograph of a winding asphalt road that curves through a dense, green forest. In the background, a large, white glacier flows down a valley, with snow-capped mountains visible under a blue sky with scattered white clouds.

# Create your perfect Volvo XC70

Congratulations. You're only a few steps away from your perfect Volvo XC70. This price list contains everything you need to create the car that's exactly right for you.

From selecting the right package and choosing from a range of class leading engines, through to picking the perfect colour and adding the finishing touches, you're in complete control. You'll also find full engine details and in-depth technical specifications to help you make the most informed choice.

Whatever you decide, you'll be choosing a Volvo that's built to take you further and keep you safer. The Volvo XC70 AWD copes with anything that passes for road and improves the ride on anything that doesn't – and comes with hill descent control and a powerful six cylinder engine.







## **XC70 SE**

The SE aims to spoil. Its luxurious interior boasts supportive seats, electronically adjustable for the driver. Then there's the 8 speaker High Performance audio system with 160 W output and intuitive features such as automatic rain sensor and autodimming rear view mirror with compass. On the outside, 17" Sargas alloy wheels, extended XC roof rails and tough XC body cladding and mouldings make sure your presence doesn't go unnoticed on or off road.

## **XC70 SE LUX**

The SE Lux model is the ultimate in luxury. Modern wood inlays and heated and powered front seats further enhance the luxurious interior. Active bending headlamps, chrome window trim, power tailgate and rear park assist offer both style and protection.

## **XC70 SE SPORT**

The SE Sport model combines the luxury features of the SE with sports styling and handling enhancements. Speed dependent power steering and Volvo's active chassis system, Four-C, both have three user settings to allow you to set up the car exactly to your liking. 18" Minos alloy wheels enhance the handling and visual presence, along with a rear spoiler, while leather-faced ventilated powered front seats offer seven cooling and heating settings.

## **PREMIUM**

The Premium model is the ultimate upgrade, available on all specification levels. The combination of Leather-faced Upholstery and Satellite Navigation System (RTI) is designed to complement the existing high level of specification whichever model you choose.

## XC70 SE

	Basic £	VAT £	Rec Retail Price £	On the Road Price £
<b>DIESEL</b>				
D5 AWD (185 PS) SE	£25,121.74	£3,768.26	£28,890.00	£29,675.00
D5 AWD (185 PS) SE Premium <sup>①</sup>	£26,860.87	£4,029.13	£30,890.00	£31,675.00

## XC70 SE LUX

	Basic £	VAT £	Rec Retail Price £	On the Road Price £
<b>DIESEL</b>				
D5 AWD (185 PS) SE Lux	£28,339.13	£4,250.87	£32,590.00	£33,375.00
D5 AWD (185 PS) SE Lux Premium <sup>①</sup>	£29,426.09	£4,413.91	£33,840.00	£34,625.00

## XC70 SE SPORT

	Basic £	VAT £	Rec Retail Price £	On the Road Price £
<b>DIESEL</b>				
D5 AWD (185 PS) SE Sport	£27,904.35	£4,185.65	£32,090.00	£32,875.00
D5 AWD (185 PS) SE Sport Premium <sup>①</sup>	£28,991.30	£4,348.70	£33,340.00	£34,125.00

## On the road

How much will it cost to get behind the wheel of your own Volvo XC70? Simply decide which model variant and engine type are right for you and then take a look at the full price list opposite.

<sup>①</sup> All Premium models include Leather-faced Upholstery and Satellite Navigation System (RTI).



# The right equipment

It's essential that your Volvo comes equipped with everything you need. Below you'll find the standard equipment lists for each model variant, plus optional equipment to personalise your Volvo XC70. And as you'd expect, there is an array of industry-leading, cutting edge safety innovations.

<b>STANDARD EQUIPMENT - SAFETY &amp; SECURITY</b>	<b>SE</b>	<b>SE LUX</b>	<b>SE SPORT</b>
Dual Stage Driver and Passenger Airbags	•	•	•
SIPS (Side Impact Protection System)	•	•	•
Dual Chamber SIPS Airbags	•	•	•
IC (Inflatable Curtain)	•	•	•
WHIPS (Whiplash Protection System)	•	•	•
ABS (Anti-lock Brake System) and FBS (Fading Brake Support) with HBA (Hydraulic Brake Assist), OHB (Optimised Hydraulic Brakes) and EBD (Electronic Brake Distribution)	•	•	•
DSTC (Dynamic Stability and Traction Control)	•	•	•
Hill Descent Control	•	•	•
5 Three Point Seat Belts	•	•	•
Seat Belt Pre-tensioners (Front and Rear)	•	•	•
Head Restraints - All 5 Seats	•	•	•
ISOFIX Attachment (Rear Seats)	•	•	•
Anti-theft Alarm including Immobiliser, Volume Sensor and Level Sensor	•	•	•
Key Integrated Remote Control Central Locking including Fuel Flap with Deadlocking System and Auto Open/Close Windows/Sunroof	•	•	•
Tinted Windscreen	•	•	•
Load Cover (Cargo Area) with Folding Load Protection Grille (Steel)	•	•	•
3D Cargo Load System (Aluminium Cargofix Rails with 4 Attachments and 4 Aluminium High Level Anchor Points)	•	•	•
Lockable Load Floor	•	•	•
Visible VIN Plate	•	•	•
Day Running Lights	•	•	•
Headlamp Levelling System	•	•	•
Adaptive Brake Lights including High Level LED Brake Light	•	•	•
Power Parking Brake	•	•	•
Side Marker Illumination	•	•	•
Home Safe and Approach Lighting	•	•	•
IDIS (Intelligent Driver Information System)	•	•	•
Warning Triangle	•	•	•

<b>STANDARD EQUIPMENT - EXTERIOR</b>	<b>SE</b>	<b>SE LUX</b>	<b>SE SPORT</b>
17" Sargas Alloy Wheels (Silver Bright) - 235/55 R17 V Tyres	•	•	•
18" Minos Alloy Wheels (Silver Bright) - 235/50 R18 V Tyres			•
Locking Wheel Nuts	•	•	•
Tyre Sealant Kit	•	•	•
Active Bending Headlamps with Headlamp Cleaning System		•	
Autofolding Power Door Mirrors with Ground Lights	•	•	•
Front Fog Lights	•	•	•
Heated Washer Nozzles		•	
Power Adjustable and Heated Door Mirrors	•	•	•
Power Tailgate		•	
Rear Spoiler			•
Rain Sensor - Automatic Windscreen Wiper Activation	•	•	•
Extended XC Roof Rails	•	•	•
Chrome Window Trim		•	
Volvo Treadplates (Front)	•	•	•
Colour Co-ordinated Door Mirrors	•	•	•
Charcoal Lower Door Mouldings, Wheel Arch Extensions, Lower Front and Rear Bumper Mouldings	•	•	•
Silver Inserts in Front Bumper and Side Mouldings	•	•	•
Silver Front and Rear Skidplate	•	•	•
Rear Park Assist		•	
Load Compensating Suspension		•	
Active Four-C Chassis (Continuously Controlled Chassis Concept)			•
Electronic All Wheel Drive System with Instant Traction™ (Haldex Coupling)	•	•	•



<b>STANDARD EQUIPMENT - INTERIOR</b>	<b>SE</b>	<b>SE LUX</b>	<b>SE SPORT</b>
ECC (Electronic Climate Control) with AQS (Air Quality System) and Pollen Filter	•	•	•
B Pillar Ventilation	•	•	•
Information Centre	•	•	•
Cruise Control	•	•	•
Speed Dependent Steering System with 3 Settings			•
Front and Rear Power Windows	•	•	•
Illuminated Driver and Passenger Vanity Mirrors	•	•	•
Front and Rear Reading Lights	•	•	•
Autodimming Rear View Mirror with Compass	•	•	•
Front Centre Armrest with Cupholders	•	•	•
Grocery Bag Holder	•	•	•
12V Socket (Front and Rear Tunnel Console/Cargo Area)	•	•	•
Power Driver's Seat with Seat Memory	•	•	•
Power Passenger Seat		•	•
Height Adjustable Driver and Passenger Seats with Lumbar Support	•	•	•
Forward Folding Front Passenger Seat	•	•	•
Versatile Split-folding Rear Seat (40%/20%/40%)	•	•	•
Heated Front Seats		•	•
Leather Steering Wheel and Gear Knob	•	•	•
Steering Wheel Remote Audio Controls	•	•	•
Chronograph Instrument Dials	•	•	•
Chrome Rotary Knobs	•	•	•
Chrome Trim on Air Vents, Side Defrosters and Mannequin		•	
Height and Reach Adjustable Steering Column	•	•	•
XC Crossed Aluminium Trim	•		•
Modern Wood Trim		•	
Textile Upholstery	•		
Leather-faced Upholstery (Standard on SE Premium and SE Lux models only)	•	•	
Ventilated Leather-faced Upholstery			•
Luxury Floor Mats	•	•	•
High Performance Sound Audio System – 1 x CD/Radio, 4 x 40W Amplifier, USB and Aux Input (MP3/WMA Compatible) and 8 Speakers	•	•	•
Satellite Navigation System (RTI) with RDS-TMC,	•	•	•
Remote Control with Europe DVD Maps (Standard on Premium models only)			•



<b>OPTIONAL EQUIPMENT - SAFETY &amp; SECURITY</b>	<b>Basic £</b>	<b>VAT £</b>	<b>Rec Retail Price £</b>	<b>SE</b>	<b>SE LUX</b>	<b>SE SPORT</b>
BLIS (Blind Spot Information System)	£391.30	£58.70	£450.00	o	o	o
Passenger Airbag Cut Off Switch	£21.74	£3.26	£25.00	o	o	o
PCC (Personal Car Communicator) with Heartbeat Sensor and Keyless Drive	£434.78	£65.22	£500.00	o	o	o
ACC (Adaptive Cruise Control) with Distance Alert and Collision Warning with Auto Brake <sup>(i)</sup>	£1,130.43	£169.57	£1,300.00	o	o	o
LDW (Lane Departure Warning) with DAC (Driver Alert Control) <sup>(i)</sup>	£434.78	£65.22	£500.00	o	o	o
Dark Tinted Windows (Rear Side Doors and Cargo Area)	£217.39	£32.61	£250.00	o	o	o
Private Locking	£21.74	£3.26	£25.00	o	o	o
360° Laminated Windows including Cargo Area (Front Side Windows are Water Repellent)	£391.30	£58.70	£450.00	o	o	o
IR (Infrared) Reflective Glass Windscreen	£130.43	£19.57	£150.00	o	o	o
Power Child Locks (Rear Doors)	£65.22	£9.78	£75.00	o	o	o
Homelink	£43.48	£6.52	£50.00	o	o	o
First Aid Kit	£21.74	£3.26	£25.00	o	o	o

<b>OPTIONAL EQUIPMENT - EXTERIOR</b>	<b>Basic £</b>	<b>VAT £</b>	<b>Rec Retail Price £</b>	<b>SE</b>	<b>SE LUX</b>	<b>SE SPORT</b>
Black Paint (Solid)	£217.39	£32.61	£250.00	o	o	o
Metallic/Pearlescent Paint	£521.74	£78.26	£600.00	o	o	o
Inscription™ Paint	£673.91	£101.09	£775.00	o	o	o
18" Minos Alloy Wheels (Silver Bright) – 235/50 R18 V Tyres	£565.22	£84.78	£650.00	o	o	●
Tempa Spare Wheel	-	-	-	nco	nco	nco
Power Tailgate	£304.35	£45.65	£350.00	o	●	o
Rear Park Assist	£304.35	£45.65	£350.00	o	●	o
Front and Rear Park Assist	£565.22	£84.78	£650.00	o	u (£300)	o
Load Compensating Suspension	£434.78	£65.22	£500.00	o	●	n/a
Active Four-C Chassis (Continuously Controlled Chassis Concept) <sup>(ii)</sup>	£956.52	£143.48	£1,100.00	o	o	●

● = Standard, o = optional, n/a = not available, nco = no cost option, u (£) = upgrade, ® = Registered Trademark.

- (i) Cannot be ordered in conjunction with IR (Infrared) Reflective Glass Windscreen.
- (ii) Four-C Chassis cannot be combined with Load Compensating Suspension.
- (iii) Heated Rear Seats must be combined with Heated Front Seats on SE and SE Sport and cannot be combined with Integrated 2-Stage Booster Cushions x 2.
- (iv) Can only be combined with F112 and F212 Upholsteries and is not available in combination with Walnut Wood Steering Wheel.
- (v) Must be ordered in conjunction with Walnut Wood Trim.
- (vi) Cannot be ordered in conjunction with Modern Wood Trim or Dark Fineline Trim.
- (vii) Must be ordered in conjunction with Power Driver/Passenger Seats (SE models).
- (viii) If a 6 x CD Player is ordered, standard USB port is removed from the audio system.
- (ix) Dolby and Pro Logic Surround Sound™ are trademarks of Dolby Laboratories Licensing Corporation.
- (x) Must be ordered in conjunction with Rear Seat Entertainment.
- (xi) Cannot be ordered in conjunction with Dual Band Integrated GSM Telephone and Volvo On Call.
- (xii) Volvo On Call includes Safety and Security package (Security package available at additional cost).
- (xiii) Must be ordered in conjunction with accessory Rubber Floor Mats and Luggage Compartment Mat. CZIP cannot be combined with Luxury Floor Mats, Winter Pack, Active Bending Headlamps and front and rear Ashtray with Cigarette Lighter.





OPTIONAL EQUIPMENT - INTERIOR	Basic £	VAT £	Rec Retail Price £	SE	SE LUX	SE SPORT
Geartronic Transmission	£1,217.39	£182.61	£1,400.00	o	o	o
Speed Dependent Steering System with 3 Settings	£195.65	£29.35	£225.00	o	o	●
Nylon Load Protection Net (2 Part)	£86.96	£13.04	£100.00	o	o	o
Power Glass Tilt and Slide Sunroof	£739.13	£110.87	£850.00	o	o	o
Rear Centre Armrest with Cupholders and Storage	£30.43	£4.57	£35.00	o	o	o
Front and Rear Ashtray with Cigarette Lighter	-	-	-	nco	nco	nco
Power Driver and Passenger Seats with Driver's Seat Memory	£521.74	£78.26	£600.00	o	●	●
Heated Front Seats	£195.65	£29.35	£225.00	o	●	●
Heated Rear Seats <sup>(iii)</sup>	£195.65	£29.35	£225.00	o	o	o
Anthracite Black Dash Top, Steering Wheel, Steering Column and Gear Knob <sup>(iv)</sup>	-	-	-	nco	nco	nco
Walnut Wood Gear Knob (Geartronic Only) <sup>(v)</sup>	£34.78	£5.22	£40.00	o	o	o
XC Crossed Aluminium Trim	-	-	-	●	nco	●
Cross Brushed Aluminium Trim	-	-	-	nco	nco	nco
Dark Fineline Trim	-	-	-	nco	nco	nco
Modern Wood Trim	£217.39	£32.61	£250.00	o	●	o
Walnut Wood Trim	£217.39	£32.61	£250.00	o	nco	o
Walnut Wood Steering Wheel <sup>(vi)</sup>	£208.70	£31.30	£240.00	o	o	o
Leather-faced Upholstery (Standard on Premium models)	£1,043.48	£156.52	£1,200.00	o	●	n/a
Ventilated Leather-faced Upholstery <sup>(vii)</sup> (Upgrade cost from Leather-faced upholstery)	£260.87	£39.13	£300.00	o	o	●
6 x CD/Radio (MP3/WMA Compatible) <sup>(viii)</sup>	-	-	-	nco	nco	nco
Dynaudio Premium Sound Audio System - 1 x CD/Radio with Dolby Pro Logic II Surround Sound <sup>(ix)</sup> , 5 x 130W Amplifier, USB and Aux Input (MP3/WMA Compatible) and 12 Dynaudio Speakers	£869.57	£130.43	£1,000.00	o	o	o
DAB (Digital Audio Broadcasting) Radio	£217.39	£32.61	£250.00	o	o	o
Subwoofer (2 x 6.5" Subwoofer with 2 x 130W Amplifier)	£156.52	£23.48	£180.00	o	o	o
Rear Seat Entertainment with 1 x DVD Player in Front Centre Armrest, 2 x 8" screens, 2 x IR Headphones and Remote Control	£1,173.91	£176.09	£1,350.00	o	o	o
Rear Seat Audio Console with Headphone Sockets x 2	£82.61	£12.39	£95.00	o	o	o
Digital TV <sup>(x)</sup>	£347.83	£52.17	£400.00	o	o	o
Satellite Navigation System (RTI) with RDS-TMC, Remote Control with Europe DVD Maps (Standard on Premium models)	£1,608.70	£241.30	£1,850.00	o	o	o
Bluetooth® Handsfree System <sup>(xi)</sup>	£217.39	£32.61	£250.00	o	o	o
Dual Band Integrated GSM Telephone with Handset	£434.78	£65.22	£500.00	o	o	o
Dual Band Integrated GSM Telephone with Handset and Volvo On Call <sup>(xii)</sup>	£695.65	£104.35	£800.00	o	o	o
CZIP (Clean Zone Interior Package) <sup>(xiii)</sup>	£104.35	£15.65	£120.00	o	n/a	o
	<b>Basic £</b>	<b>VAT £</b>	<b>Rec Retail Price £</b>	<b>SE</b>	<b>SE LUX</b>	<b>SE SPORT</b>
<b>WINTER PACK</b>						
Heated Front Seats, Headlamp Cleaning System and Heated Washer Nozzles	£326.09	£48.91	£375.00	o	n/a	u (£245)
Winter Pack with Active Bending Headlamps	£804.35	£120.65	£925.00	o	●	u (£795)
<b>FAMILY PACK</b>						
Integrated 2-Stage Booster Cushions x 2, Power Child Locks (Rear Doors) and Passenger Airbag Cut Off Switch	£226.09	£33.91	£260.00	o	o	o
<b>COMMUNICATIONS PACK</b>						
Satellite Navigation System (RTI) with RDS-TMC, Remote Control with Europe DVD Maps, PCC (Personal Car Communicator) with Heartbeat Sensor and Keyless Drive and Bluetooth® Handsfree System <sup>(xi)</sup>	£1,739.13	£260.87	£2,000.00	o	o	o
Communications Pack (Premium Models only)	£478.26	£71.74	£550.00	o	o	o
<b>DRIVER SUPPORT PACK</b>						
BLIS (Blind Spot Information System), ACC (Adaptive Cruise Control) with Distance Alert and Collision Warning with Auto Brake and LDW (Lane Departure Warning) with DAC (Driver Alert Control) <sup>(i)</sup>	£1,304.35	£195.65	£1,500.00	o	o	o
<b>SECURITY PACK</b>						
PCC (Personal Car Communicator) with Heartbeat Sensor and Keyless Drive and 360° Laminated Windows including Cargo Area (Front Side Windows are Water Repellent)	£521.74	£78.26	£600.00	o	o	o



# What's your style?

At Volvo we know everyone is different. And that's why you can choose from a whole spectrum of colours for the exterior of your Volvo XC70. Whatever your style, you'll find the perfect shade for you.



019 Black Stone



426 Silver metallic



452 Black Sapphire metallic



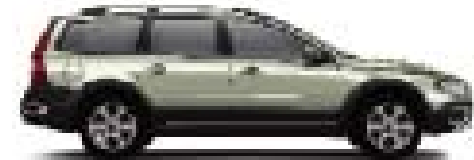
454 Ruby Red pearl



466 Barents Blue pearl



472 Oyster Grey pearl



477 Inscription™ Electric Silver Coarse Flake metallic



484 Seashell metallic



493 Caper Green pearl



614 Ice White

NB All exterior colours come with Charcoal mouldings.  
It is not possible to reproduce exact original shades in printed matter. Please ask your Volvo dealer to show you samples.

# The wheels

And now we come to one of the most important parts of choosing your new Volvo XC70. Both of these alloy wheels have their own distinct character.

Your selection of alloy wheel can dramatically influence the exterior styling of your Volvo XC70. Which one will you choose?



17" Sargas  
(Silver Bright)



18" Minos  
(Silver Bright)





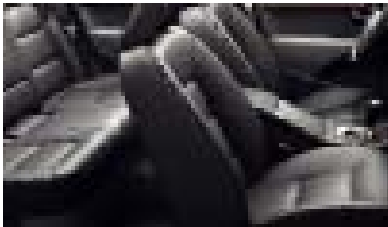




# Bespoke tailoring from Volvo

The finest fabrics, superb stitching and minute attention to detail – whichever interior you choose for your Volvo XC70 you'll be surrounded by luxury. How will you tailor yours?

## LEATHER-FACED



Off Black (F100)



Soft Beige (F112)



Espresso Brown (F116)

NB For full colour breakdown of upholstery and interior, please refer to the upholstery section below.

UPHOLSTERY	Upholstery Code	Interior Colour	Upholstery Colour	Dashboard Top	Door Panel, Lower Dashboard & Upper Tunnel	Carpet & Lower Tunnel Console	Door Insert Colour	Headliner Colour
Textile	F600	Anthracite Black	Off Black	Off Black	Off Black	Off Black	Off Black	Soft Beige
	F614	Sandstone Beige	Soft Beige	Mocca Brown	Soft Beige	Mocca Brown	Mocca Brown	Soft Beige
Leather-faced	F100	Anthracite Black	Off Black	Off Black	Off Black	Off Black	Off Black	Soft Beige
	F112	Sandstone Beige	Soft Beige	Espresso Brown	Soft Beige	Mocca Brown	Mocca Brown	Soft Beige
	F116	Sandstone Beige	Espresso Brown	Espresso Brown	Soft Beige	Mocca Brown	Espresso Brown	Soft Beige
Ventilated Leather-faced	F200	Anthracite Black	Off Black	Off Black	Off Black	Off Black	Off Black	Soft Beige
	F212	Sandstone Beige	Soft Beige	Espresso Brown	Soft Beige	Mocca Brown	Soft Beige	Soft Beige
	F216	Sandstone Beige	Espresso Brown	Espresso Brown	Soft Beige	Mocca Brown	Espresso Brown	Soft Beige

NB It is not possible to reproduce exact original shades in printed matter. Please ask your Volvo dealer to show you samples.

## VENTILATED LEATHER-FACED



Off Black (F200)



Soft Beige (F212)

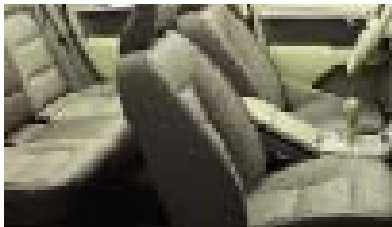


Espresso Brown (F216)

## TEXTILE



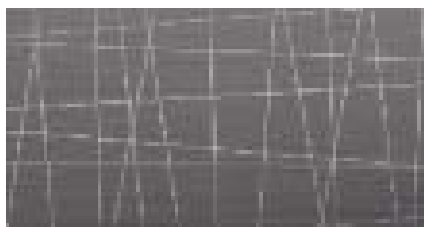
Off Black (F600)



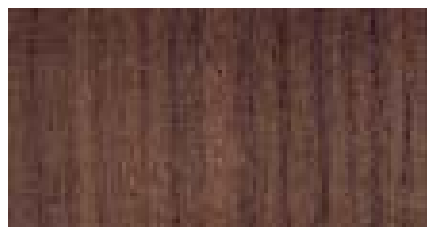
Mocca Brown (F614)

# Interior inlays

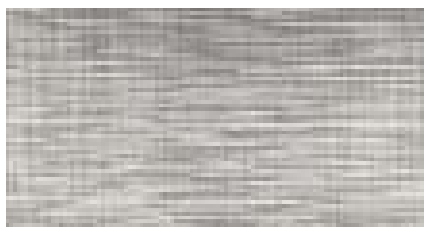
A selection of premium materials to complement your interior fabric.



XC Crossed Aluminium



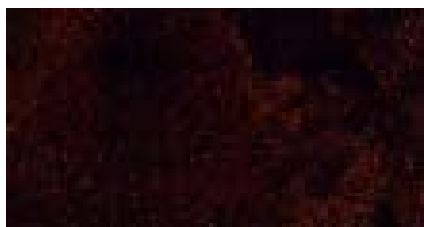
Modern Wood



Cross Brushed Aluminium



Dark Finline



Walnut Wood

NB It is not possible to reproduce exact original shades in printed matter.







# In fine detail

The nuts and bolts of your Volvo XC70. Whatever you need to know about your new car – whether that's fuel consumption, CO2 emissions, top speed or boot space – you'll find it here.

ENGINE	D5
Configuration	Transverse – 20 valve
Cylinders	5
Engine capacity, cc	2400
Bore x stroke, mm	81 x 93.1
Max. output ECE, PS/kw/rpm	185/136/4000
Max. torque ECE, Nm/rpm	400/2000-2750
Octane rating	Turbo Diesel
Fuel system	Common Rail direct injection
Compression ratio	17.3:1

PERFORMANCE	D5	
	Manual	Geartronic
Top speed, mph	130	127
Acceleration 0-60mph (sec)	8.8	9.4
0-62mph (0-100kmh) (sec)	9.3	9.9
Drag co-efficient	0.35	0.35

FUEL CONSUMPTION <sup>(l)(ii)</sup>	D5	
	Manual	Geartronic
(Government Approved) Mpg (l/100 km)		
Urban	29.4 (9.6)	26.9 (10.5)
Extra Urban	44.8 (6.3)	40.4 (7.0)
Combined	37.7 (7.5)	34.0 (8.3)
CO2 g/km	199	219
VED (Vehicle Excise Duty) Band	F	F

LUGGAGE COMPARTMENT	To Glass Line	To Roof
Volume, rear seats up - luggage area, litres (cu.ft)	575 (20.3)	815 (28.8)
Volume, rear seats down, litres (cu.ft)	840 (29.7)	1600 (56.5)

POWER STEERING SYSTEM	All Models
(rack & pinion) Turning circle, m (ft)	11.5 (37.7)

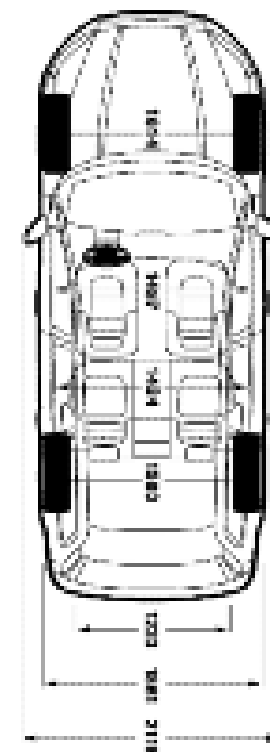
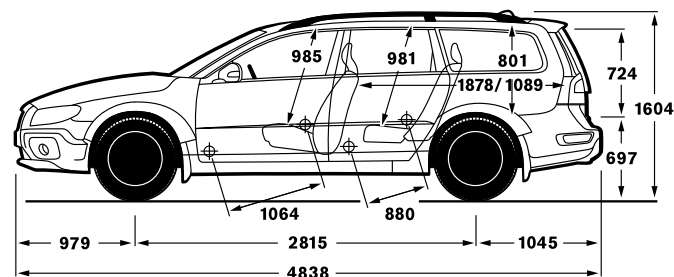
		D5
Brakes		16.5"
Disc diameter front, mm		316
Disc diameter rear, mm		302
Transmission	Manual Geartronic	6 speed 6 speed
Fuel tank volume	litres (gallons)	70 (15.4)

INSURANCE GROUPS	D5
Volvo XC70	15E

E = Exceeds security requirements for model concerned and group rating has been reduced.

WEIGHTS	Manual	D5	Geartronic
Min. kerb weight, kg (actual kerb weight dependent on spec.)	1861		1877
Max. possible towing weight braked, kg	2100		2100
Max. towing weight unbraked approx, kg <sup>(iii)</sup>	750		750
Max. towball weight, kg	90		90
Max. total weight, kg	2390		2400
Max. roof load, kg	100		100
Max. payload, kg	529		523

GROUND CLEARANCE	
Vehicle ground clearance, mm	210
with 2 persons, mm	205
Wading Depth, mm	300
Approach Angle	19.2°
Departure Angle	24°
Breakover Angle	19.8°



- (i) The results do not express or imply any guarantee of the fuel consumption of a particular car.
- (ii) Official fuel consumption figures are obtained in accordance with Directive 93/116/EC as amended by 1999/100/EC. The figures are obtained under controlled test conditions and as such consumption achieved on the road will not necessarily accord with the official test results. Factors including driving styles and road, car and weather conditions will also have a bearing on actual fuel consumption achieved.
- (iii) Unbraked towing weight must not exceed 50% of kerb weight up to a maximum of 750 kg.

#### Notes

The weight of the vehicle will influence the level of CO<sub>2</sub> emitted. As a result, vehicles with higher levels of specification and factory fit options may emit higher levels of CO<sub>2</sub>. Once a vehicle has been built it will be given its own specific CO<sub>2</sub> emission on which the Vehicle Excise Duty will be charged.

A weighbridge must be used to determine specific weights.

Data valid for manual transmission unless specified.

All measurements in mm.

The Max. output figures are quoted in PS (Pferdestärke), which is the metric equivalent of brake horsepower.

NB Some of the information in this price list may not be correct due to product changes which may have occurred since it was printed. Some of the equipment described or shown may now be available at extra cost. Before ordering, please ask your Volvo dealer for the latest information.

The manufacturer reserves the right to make changes at any time, without notice, to price, colour, materials, specifications and models. Volvo Car UK Limited, Globe Park, Marlow, Buckinghamshire, SL7 1YQ.

# Accessories from Volvo

Of course, your Volvo XC70 won't be perfect until it's exactly how you want it. And that's why we offer a range of accessories so you can completely personalise your new car. **The prices quoted below exclude fitting costs and are correct at time of going to press** – please confirm the total cost with your local Volvo dealer.

ACCESSORIES	Basic £	VAT £	Rec Retail Price £
<b>EXTERIOR</b>			
Aluminium Bike Rack (down tube clamp)	£53.13	£7.97	£61.10
Bike Rack (servo lift)	£113.17	£16.98	£130.15
Bike Rack Cargo Area	£86.81	£13.02	£99.83
Bike Rack (towbar mounted and collapsible)	£190.65	£28.60	£219.25
Load Carrier – wing profile	£108.81	£16.32	£125.13
Mud Flaps Front, Mud Flaps Rear (price per pair)	£23.41	£3.51	£26.92
Roofbox – Sport Time 200 (440 litre volume) <sup>(i)</sup>	£153.56	£23.03	£176.59
Ski/Snowboard Carrier with Sliding Rail	£67.35	£10.10	£77.45
Towbar – Detachable type with 13 Pin Electrics <sup>(ii)</sup>	£395.69	£59.35	£455.04
Rear Park Assist and Front Park Assist – price for each from...	£165.34	£24.80	£190.14
Rear Spoiler	£236.75	£35.51	£272.26
<b>INTERIOR</b>			
Garmin Portable Sat Nav	£310.64	£46.60	£357.24
Twin Screen Rear Seat Entertainment System	£1,409.75	£211.46	£1,621.21
TV Receiver for Rear Seat Entertainment above	£642.85	£96.43	£739.28
Boot Mat – rubber or textile/rubber reversible	£90.05	£13.51	£103.56
Cargo Area Divider	£86.81	£13.02	£99.83
Cooler/Hot Box (excludes power cable)	£70.85	£10.63	£81.48
Bluetooth® Hands Free System from...	£160.29	£24.04	£184.33
Load Liner – form moulded plastic for full cargo area	£65.97	£9.90	£75.87
iPod Interface <sup>(iv)</sup>	£238.30	£35.75	£274.05
USB Interface <sup>(iv)</sup>	£238.30	£35.75	£274.05
Combined USB/iPod Interface <sup>(iv)</sup>	£238.30	£35.75	£274.05
Rubber Floor Mats (set of four)	£55.54	£8.33	£63.87
Steel Safety Grille (behind second row of seats)	£121.53	£18.23	£139.76
Sunblind – rear door windows (pair)	£26.31	£3.95	£30.26
Sunblind – rear compartment (3 pieces)	£36.81	£5.52	£42.33
Table (rear centre armrest)	£17.71	£2.66	£20.37
<b>CHILD</b>			
Child Seat ISOFIX <sup>(iii)</sup>	£127.40	£19.11	£146.51
Infant Seat ISOFIX <sup>(iii)</sup>	£163.47	£24.52	£187.99
ISOFIX base	£94.63	£14.19	£108.82
Child Booster Cushion	£30.69	£4.60	£35.29
Child Booster Backrest (to go with above)	£30.69	£4.60	£35.29

(i) Other roofboxes available – please ask your dealer for details.

(ii) Detachable 7 pin and Fixed 13 and 7 pin also available – please ask your dealer for details.

(iii) VAT on Child Seats is 5%.

(iv) USB and iPod Interface standard on Premium and High Performance Sound.

**For further information and a complete list of all Volvo Accessories, take a look at the Accessory website at [www.volvocars.co.uk/accessories](http://www.volvocars.co.uk/accessories) or visit your local dealer.**

## Try an XC70 for yourself with Volvo Rental

Why not hire a Volvo XC70 – or any other Volvo – from Volvo Rental? You'll be guaranteed to drive a Volvo prepared to the highest standards by your local Volvo dealer. Call 0800 400 430 for more information today.





# The end is just the beginning

It's a simple idea; one point of contact for all your car ownership needs – whether it's about finding the right finance deal or who to contact in an emergency. To get the most out of owning your Volvo, trust Care by Volvo.

## STARTING OFF ON THE RIGHT FOOT

**You might be surprised how easy and flexible financing can be. Our range of finance, service and insurance options allows you to budget around one key factor – your lifestyle.**

### FINANCE

As part of Volvo, Volvo Car Finance has developed a series of funding plans that will provide you with maximum choice and flexibility when acquiring a Volvo®. For details of the current promotions available, please visit [www.volvocars.co.uk/financepromotions](http://www.volvocars.co.uk/financepromotions)

### INSURANCE

Volvo Car Insurance is designed for Volvo drivers and because we know Volvos inside out, we can offer exactly the right tools and expertise, fitting only genuine Volvo parts by trained Volvo technicians<sup>(i)</sup>. Your Volvo will come with seven days drive away insurance, so you've already got peace of mind. Because Volvo drivers have an excellent reputation, we can also offer extensive cover at a reasonable price<sup>(ii)</sup>.

Call now for your insurance quote on **0800 238 239**, quoting reference BROCH.



**WHAT NEXT?** If you'd like to find out more about the range of products and services that make up Care by Volvo, the story continues at [www.volvocars.co.uk](http://www.volvocars.co.uk). Alternatively you can contact your nearest Volvo dealer or request relevant brochures.

(i) Finance subject to status. Guarantees/indemnities may be required. Volvo Car Finance SL7 1YQ.

(ii) When using a Volvo approved Body and Paint repairer.

(iii) Volvo Car Insurance is underwritten by Royal & Sun Alliance Insurance plc (No. 93792). Registered in England and Wales at St Mark's Court, Chart Way, Horsham, West Sussex RH12 1XL. Authorised and regulated by the Financial Services Authority. For your protection telephone calls will be recorded and may be monitored. All benefits are subject to qualifying status, terms and conditions, cover level and underwriting criteria. Service and repair benefits are subject to being carried out by a recommended repairer.

## MAKING LIFE EASIER

**Owning a Volvo should be a safe and enjoyable experience. To ensure it stays that way, we're committed to providing you with the best in support for as long as you own one.**

## SERVICE PROGRAMME

Your Volvo dealer has the unique know-how to tailor a service programme according to Volvo's strict recommendations and guarantees you years of safety and driving pleasure.

## VOLVO ON CALL

Subscribe to Volvo On Call and you'll never be completely on your own. It's a GPS-based communication system providing 24-hour access to both emergency and roadside assistance wherever you are. See the Volvo On Call brochure for more information.

## LOOKING AHEAD

**You'll probably never find out just how good some of these services are. But should the unexpected happen, we'd like to think that you'd be even happier you chose a Volvo.**

## ROADSIDE ASSISTANCE

Every new car comes with one year's Volvo Assistance cover. You'll enjoy free breakdown and recovery assistance, anywhere in Europe, 24 hours a day. You can even extend cover for £85 for one year or £155 for two years. Call Volvo Assistance on **08701 650 978**.

## WARRANTY

Every new Volvo comes with comprehensive protection. Our warranty covers the first three years or 60,000 miles, whichever comes first. There's a three year unlimited mileage warranty on the paintwork, and either eight or twelve years against rust perforation. If a component fails due to a defect or material fault, your dealer will swiftly rectify the problem, free of charge.

# Volvo. for life

For tax free sales, including Military, Diplomat and all other Export enquiries, contact Volvo Car UK Tourist & Diplomat Sales or Volvo Car UK British Military Sales on **01707 262 388** or e-mail to [vcukics@volvocars.com](mailto:vcukics@volvocars.com) or [bms@volvocars.com](mailto:bms@volvocars.com)

All 'On The Road' prices quoted in this price list include Volvo standard national delivery charge, inclusive of number plates and VAT at £520 and the VED (Vehicle Excise Duty) car tax as of 1st December 2008. This charge does not include any provision for fuel. The 'On The Road' price also includes a £55 vehicle first registration fee (as set by the government – excludes Channel Islands and Isle of Man). Recommended retail prices quoted do not include these additions.

**NB** Some of the information in this price list may not be correct due to product changes which may have occurred since it was printed. Before ordering, please ask your Volvo dealer for the latest information. The manufacturer reserves the right to make changes at any time, without notice, to prices, colour, materials, specifications and models.