

# NEW VOLVO XC60

PRICE AND SPECIFICATION





## Create your perfect Volvo XC60

Congratulations. You're only a few steps away from your perfect Volvo XC60. This price list contains everything you need to create the car that's exactly right for you.

From selecting the right package and choosing from a range of class leading engines, through to picking the perfect colour and adding the finishing touches, you're in complete control.

Whatever you decide, you'll be choosing Volvo's freshest and most exciting model. A sensational new all-wheel drive crossover vehicle, the Volvo XC60 comes with City Safety technology as standard – a world-first. This unique laser-based system avoids low-speed collisions by braking automatically in urban traffic.



## XC60 S

The S model comes with all the features you would expect from Volvo. Beyond the 17" Segin alloy wheels and RSC (Roll Stability Control) system, the S offers front fog lights, roof rails and rear spoiler. Interior details include electronic climate control, information centre, cruise control, leather steering wheel with remote audio controls, aluminium trim and performance sound audio system with aux input and CD player.

## XC60 SE

The SE is further enhanced with Hill Descent Control, power driver's seat with memory and autofolding power door mirrors with ground lights. Added luxury includes Eriksberg T-Tec/Textile upholstery, autodimming rear view mirror with compass and chrome window trim.

## XC60 SE LUX

The top of the line SE Lux is the ultimate in luxury. Above and beyond SE specification, the SE Lux has chronographic instrument dials, leather upholstery, Nordic Light Oak natural wood trim and both front seats are powered and heated. Further enhancements include luxury floor mats and chrome detailing. 18" Merac alloy wheels, active bending headlamps and rear park assist are all standard.



## On the road

How much will it cost to get behind the wheel of your own Volvo XC60? Simply decide which model variant and engine type are right for you and then take a look at the full price list.

### XC60 S

	Basic £	VAT £	Rec Retail Price £	On the Road Price £
<b>DIESEL</b>				
2.4D AWD (163 PS) S	£20,429.79	£3,575.21	£24,005.00	£24,750.00
D5 AWD (185 PS) S	£21,280.85	£3,724.15	£25,005.00	£25,750.00

### XC60 SE

	Basic £	VAT £	Rec Retail Price £	On the Road Price £
<b>PETROL</b>				
T6 AWD (285 PS) SE Geartronic	£26,434.04	£4,625.96	£31,060.00	£31,995.00
<b>DIESEL</b>				
2.4D AWD (163 PS) SE	£21,706.38	£3,798.62	£25,505.00	£26,250.00
D5 AWD (185 PS) SE	£22,557.45	£3,947.55	£26,505.00	£27,250.00

### XC60 SE LUX

	Basic £	VAT £	Rec Retail Price £	On the Road Price £
<b>PETROL</b>				
T6 AWD (285 PS) SE Lux Geartronic	£28,391.49	£4,968.51	£33,360.00	£34,295.00
<b>DIESEL</b>				
2.4D AWD (163 PS) SE Lux	£23,663.83	£4,141.17	£27,805.00	£28,550.00
D5 AWD (185 PS) SE Lux	£24,514.89	£4,290.11	£28,805.00	£29,550.00

# The right equipment

It's essential that your Volvo comes equipped with everything you need. Below you'll find the standard equipment lists for each model variant, plus optional equipment to personalise your Volvo XC60. And as you'd expect, there is an array of industry-leading, cutting edge safety innovations.

<b>STANDARD EQUIPMENT - SAFETY &amp; SECURITY</b>	<b>S</b>	<b>SE</b>	<b>SE LUX</b>
City Safety	•	•	•
Dual Stage Driver and Passenger Airbags	•	•	•
SIPS (Side Impact Protection System)	•	•	•
Dual Chamber SIPS Airbags	•	•	•
IC (Inflatable Curtain)	•	•	•
RSC (Roll Stability Control)	•	•	•
ROPS (Roll Over Protection System)	•	•	•
WHIPS (Whiplash Protection System)	•	•	•
ABS (Anti-lock Brake System) and FBS (Fading Brake Support) with HBA (Hydraulic Brake Assist) and EBD (Electronic Brake Distribution), RAB (Ready Alert Brakes) and EBA (Emergency Brake Assist)	•	•	•
DSTC (Dynamic Stability and Traction Control)	•	•	•
Hill Descent Control	•	•	•
5 Three Point Seat Belts	•	•	•
Seat Belt Pre-tensioners (Front and Rear)	•	•	•
Pre-prepared Restraints	•	•	•
Head Restraints - All 5 Seats	•	•	•
ISOFIX Attachment (Rear Seats)	•	•	•
Anti-theft Alarm including Immobiliser, Volume Sensor and Level Sensor	•	•	•
Key Integrated Remote Control Central Locking including Fuel Flap with Deadlocking System and Auto Open/Close Windows/Sunroof	•	•	•
Tinted Windscreen	•	•	•
Load Cover (Cargo Area) with Load Protection Net	•	•	•
4 Aluminium High Level Anchor Points in Cargo Area	•	•	•
Lockable Load Floor	•	•	•
Visible VIN Plate	•	•	•
Day Running Lights	•	•	•
Headlamp Levelling System	•	•	•
Adaptive Brake Lights including High Level LED Brake Lights	•	•	•
Power Parking Brake	•	•	•
Side Marker Illumination	•	•	•
Home Safe and Approach Lighting	•	•	•
IDIS (Intelligent Driver Information System)	•	•	•
Warning Triangle	•	•	•
First Aid Kit	•	•	•

<b>STANDARD EQUIPMENT - EXTERIOR</b>	<b>S</b>	<b>SE</b>	<b>SE LUX</b>
17" Segin (Silver Stone) Alloy Wheels - 235/65 R17 V Tyres	•	•	•
18" Merac (Silver Stone) Alloy Wheels - 235/60 R18 V Tyres			•
Locking Wheel Nuts	•	•	•
Active Bending Headlamps with Headlamp Cleaning System			•
Tyre Sealant Kit	•	•	•
Front Fog Lights	•	•	•
Heated Washer Nozzles			•
Autofolding Power Door Mirrors with Ground Lights		•	•
Rear Spoiler	•	•	•
Rain Sensor - Automatic Windscreen Wiper Activation		•	•
Roof Rails (Silver - SE Lux only)	•	•	•
Chrome Window Trim		•	•
Volvo Tread Plates (Front)	•	•	•
Colour Co-ordinated Door Mirrors	•	•	•
Rear Park Assist			•
Twin Aluminium Tail Pipes (T6 only)		•	•
Electronic All Wheel Drive System with Instant Traction™ (Haldex Coupling)	•	•	•

<b>STANDARD EQUIPMENT - INTERIOR</b>	<b>S</b>	<b>SE</b>	<b>SE LUX</b>
ECC (Electronic Climate Control) with AQS (Air Quality System) and Pollen Filter	•	•	•
B Pillar Ventilation	•	•	•
Information Centre	•	•	•
Cruise Control	•	•	•
Speed Dependent Steering System with 3 Settings (T6 only)		•	•
Front and Rear Power Windows	•	•	•
Power Adjustable and Heated Door Mirrors	•	•	•
Illuminated Driver and Passenger Vanity Mirrors	•	•	•
Front and Rear Reading Lights	•	•	•
Autodimming Rear View Mirror with Compass		•	•
Front Centre Armrest with Cupholders	•	•	•
Grocery Bag Holder		•	•
12V Socket (Front and Rear Tunnel Console/Cargo Area)	•	•	•
Power Driver's Seat with Seat Memory		•	•
Power Passenger Seat			•
Forward Folding Front Passenger Seat	•	•	•
Versatile Split-folding Rear Seat (40%/20%/40%)	•	•	•
Height Adjustable Driver and Passenger Seats with Lumbar Support	•	•	•
Heated Front Seats			•
Leather Steering Wheel and Gear Knob	•	•	•
Steering Wheel Remote Audio Controls	•	•	•
Chrome Rotary Knobs	•	•	•
Chrome Trim on Air Vents	•	•	•
Chrome Mannequin on Centre Console			•
Height and Reach Adjustable Steering Column	•	•	•
Chronograph Instrument Dials			•
Brushed Aluminium Trim	•	•	•
Nordic Light Oak Trim			•
Lomma Textile Upholstery	•		•
Eriksberg T-Tec/Textile Upholstery		•	•
Leather-faced Upholstery			•
Luxury Floor Mats			•
Performance Sound Audio System - 1 x CD/Radio, 4 x 20W Amplifier, Aux Input and 6 Speakers	•	•	•

<b>OPTIONAL EQUIPMENT – SAFETY &amp; SECURITY</b>	<b>Basic £</b>	<b>VAT £</b>	<b>Rec Retail Price £</b>	<b>S</b>	<b>SE</b>	<b>SE LUX</b>
BLIS (Blind Spot Information System) with Autofolding Power Door Mirrors with Ground Lights	£553.19	£96.81	£650.00	o	u (£450)	u (£450)
Passenger Airbag Cut Off Switch	£21.28	£3.72	£25.00	o	o	o
PCC (Personal Car Communicator) with Heartbeat Sensor and Keyless Drive	£425.53	£74.47	£500.00	o	o	o
Dark Tinted Windows (Rear Side Doors and Cargo Area)	£212.77	£37.23	£250.00	o	o	o
LDW (Lane Departure Warning) with DAC (Driver Alert Control) <sup>(i)</sup>	£425.53	£74.47	£500.00	o	o	o
ACC (Adaptive Cruise Control) with Distance Alert and Collision Warning with Auto Brake <sup>(ii)</sup>	£1,106.38	£193.62	£1,300.00	o	o	o
Hill Descent Control	£140.43	£24.57	£165.00	o	•	•
360° Laminated Windows including Cargo Area (Front Side Windows are Water Repellent)	£382.98	£67.02	£450.00	o	o	o
IR (Infrared) Reflective Glass Windscreen	£127.66	£22.34	£150.00	o	o	o
Power Child Locks (Rear Doors)	£63.83	£11.17	£75.00	o	o	o
Homelink	£42.55	£7.45	£50.00	o	o	o

<b>OPTIONAL EQUIPMENT – EXTERIOR</b>	<b>Basic £</b>	<b>VAT £</b>	<b>Rec Retail Price £</b>	<b>S</b>	<b>SE</b>	<b>SE LUX</b>
Black Paint (Solid)	£212.77	£37.23	£250.00	o	o	o
Metallic/Pearlescent Paint	£510.64	£89.36	£600.00	o	o	o
Inscription™ Paint	£659.57	£115.43	£775.00	o	o	o
17" Segin (Silver Stone) Alloy Wheels – 235/65 R17 V Tyres	–	–	–	•	•	nco
18" Mantus (Silver Stone) Alloy Wheels – 235/60 R18 V Tyres	£553.19	£96.81	£650.00	o	o	nco
18" Merac (Silver Bright) Alloy Wheels – 235/60 R18 V Tyres	£553.19	£96.81	£650.00	o	o	•
Tempa Spare Wheel	–	–	–	nco	nco	nco
TPMS (Tyre Pressure Monitoring System)	£170.21	£29.79	£200.00	o	o	o
Autofolding Power Door Mirrors with Ground Lights	£170.21	£29.79	£200.00	o	•	•
Rear Park Assist	£297.87	£52.13	£350.00	o	o	•
Front and Rear Park Assist	£553.19	£96.81	£650.00	o	o	u (£300)
Park Assist Camera <sup>(x)</sup>	£510.64	£89.36	£600.00	o	o	o
Load Compensating Suspension	£425.53	£74.47	£500.00	o	o	o
Active Four-C Chassis (Continuously Controlled Chassis Concept) <sup>(xi)</sup>	£936.17	£163.83	£1,100.00	o	o	o
Rain Sensor – Automatic Windscreen Wiper Activation	£123.40	£21.60	£145.00	o	•	•

• = Standard, o = optional, n/a = not available, nco = no cost option, u (£) = upgrade, ® = Registered Trademark

(i) Cannot be ordered in conjunction with IR Reflective Glass Windscreen

(ii) Cannot be ordered in conjunction with Heated Rear Seats

(iii) Heated Rear Seats must be combined with Heated Front Seats on S and SE

(iv) Must be ordered in conjunction with Classic Wood Trim

(v) Cannot be ordered in conjunction with Nordic Light Oak Trim

(vi) Dolby and Pro Logic Surround Sound™ are trademarks of Dolby Laboratories Licensing Corporation

(vii) Must be ordered in conjunction with High Performance Audio or Dynaudio Premium Sound Audio System

(viii) Cannot be ordered in conjunction with Dual Band Integrated GSM Telephone and Volvo On Call

(ix) Must be ordered in conjunction with accessory Rubber Floor Mats and Luggage Compartment Mat. CZIP cannot be combined with Luxury Floor Mats, Winter Pack, Active Bending Headlamps and front and rear Ashtray with Cigarette Lighter

(x) Must be ordered in conjunction with RTI Navigation System

(xi) Active Four-C Chassis cannot be combined with Load Compensating Suspension

(xii) Volvo On Call includes Safety and Security packages



<b>OPTIONAL EQUIPMENT – INTERIOR</b>	<b>Basic £</b>	<b>VAT £</b>	<b>Rec Retail Price £</b>	<b>S</b>	<b>SE</b>	<b>SE LUX</b>
Geartronic Transmission (Standard T6)	£1,191.49	£208.51	£1,400.00	o	o	o
Speed Dependent Steering System with 3 Settings (Standard T6)	£191.49	£33.51	£225.00	o	o	o
Panoramic Laminated Power Glass Tilt and Slide Sunroof	£851.06	£148.94	£1,000.00	o	o	o
Autodimming Rear View Mirror with Compass	£212.77	£37.23	£250.00	o	•	•
Grocery Bag Holder	£85.11	£14.89	£100.00	o	•	•
Rear Centre Armrest with Cupholders and Storage	£29.79	£5.21	£35.00	o	o	o
Front and Rear Ashtray with Cigarette Lighter	–	–	–	nco	nco	nco
Power Driver and Passenger Seats with Driver's Seat Memory	£1,021.28	£178.72	£1,200.00	o	u (£600)	•
Heated Front Seats	£191.49	£33.51	£225.00	o	o	•
Heated Rear Seats <sup>(iii)</sup>	£191.49	£33.51	£225.00	o	o	o
Leather/Classic Wood Gear Knob Inserts (Geartronic Only) <sup>(iv)(v)</sup>	£34.04	£5.96	£40.00	o	o	o
Brushed Aluminium Trim	–	–	–	•	•	nco
Nordic Light Oak Trim	£212.77	£37.23	£250.00	o	o	•
Classic Wood Trim	£212.77	£37.23	£250.00	o	o	nco
Classic Wood Steering Wheel <sup>(vi)(v)</sup>	£204.26	£35.74	£240.00	o	o	o
Sandstone Beige Steering Wheel (Not available with Off Black interior)	–	–	–	nco	nco	nco
Eriksberg T-Tec/Textile Upholstery	£255.32	£44.68	£300.00	o	•	nco
Leather-faced Upholstery	£1,021.28	£178.72	£1,200.00	o	u (£900)	•
6 x CD Player (MP3/WMA Compatible) <sup>(vii)</sup>	£212.77	£37.23	£250.00	o	o	o
DAB (Digital Audio Broadcasting) Radio <sup>(vii)</sup>	£212.77	£37.23	£250.00	o	o	o
High Performance Sound Audio System – 1 x CD radio, 4 x 40 W Amplifier, Aux Input (MP3/WMA Compatible), USB Port and 8 Speakers	£340.43	£59.57	£400.00	o	o	o
Dynaudio Premium Sound Audio System – with Dolby Pro Logic II Surround Sound <sup>(vi)</sup> , 5 x 130 W Amplifier, Aux Input (MP3/WMA Compatible), USB Port and 12 Dynaudio Speakers	£851.06	£148.94	£1,000.00	o	o	o
Subwoofer (2 x 6.5" Subwoofer with 2 x 130 W Amplifier) <sup>(vii)</sup>	£153.19	£26.81	£180.00	o	o	o
Rear Seat Audio Console with Headphone Sockets x 2 <sup>(vii)</sup>	£80.85	£14.15	£95.00	o	o	o
RTI Navigation System with RDS-TMC and Europe DVD Map	£1,574.47	£275.53	£1,850.00	o	o	o
Bluetooth® Handsfree System <sup>(viii)</sup>	£170.21	£29.79	£200.00	o	o	o
Dual Band Integrated GSM Telephone with Handset and Volvo On Call <sup>(xii)</sup>	£680.85	£119.15	£800.00	o	o	o
CZIP (Clean Zone Interior Package) <sup>(ix)</sup>	£102.13	£17.87	£120.00	o	o	o

	<b>Basic £</b>	<b>VAT £</b>	<b>Rec Retail Price £</b>	<b>S</b>	<b>SE</b>	<b>SE LUX</b>
<b>WINTER PACK</b>						
Heated Front Seats, Headlamp Cleaning System, Luxury Floor Mats and Heated Washer Nozzles	£382.98	£67.02	£450.00	o	o	n/a
Winter Pack with Active Bending Headlamps	£851.06	£148.94	£1,000.00	o	o	•
<b>FAMILY PACK</b>						
Integrated 2-Stage Booster Cushions x 2 <sup>(ii)</sup> , Power Child Locks and Passenger Airbag Cut Off Switch	£221.28	£38.72	£260.00	o	o	o
<b>COMMUNICATIONS PACK</b>						
RTI Navigation System with RDS-TMC and Europe DVD Map, Remote Control, PCC (Personal Car Communicator) with Heartbeat Sensor and Keyless Drive and Bluetooth® Handsfree System <sup>(v)(iii)</sup>	£1,702.13	£297.87	£2,000.00	o	o	o
<b>DRIVER SUPPORT PACK</b>						
BLIS (Blind Spot Information System) with Autofolding Power Door Mirrors with Ground Lights, ACC (Adaptive Cruise Control) with Distance Alert and Collision Warning and Auto Brake, LDW (Lane Departure Warning) with DAC (Driver Alert Control) <sup>(i)</sup>	£1,446.81	£253.19	£1,700.00	o	u (£1,500)	u (£1,500)



## What's your style?

At Volvo we know everyone is different. And that's why you can choose from a whole spectrum of colours for the exterior of your Volvo XC60. Whatever your style, you'll find the perfect shade for you.



426 Silver metallic



452 Black Sapphire metallic



019 Black Stone



466 Barents Blue pearl



477 Inscription™ Electric Silver Coarse Flake metallic



478 Maple Red pearl



479 Orinoco Blue metallic



481 Cosmic White metallic



490 Chameleon Blue pearl



492 Savile Grey pearl



494 Terra Bronze metallic



495 Lime Grass Green metallic



614 Ice White

NB It is not possible to reproduce exact original shades in printed matter. Please ask your Volvo dealer to show you samples.

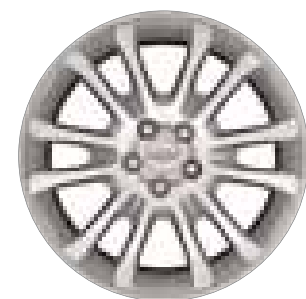
# The wheels

And now we come to one of the most important parts of choosing your new Volvo XC60. Volvo alloy wheels come in a variety of different styles, cuts and finishes – each with its own distinct character.

Your selection of alloy wheel can dramatically influence the exterior styling of your Volvo XC60. What will you choose?



17" Segin



18" Mantus



18" Merac







# Bespoke tailoring from Volvo

The finest fabrics, superb stitching and minute attention to detail – whichever interior you choose for your Volvo XC60 you'll be surrounded by luxury. How will you tailor yours?

## LOMMA TEXTILE



Off Black (G000)

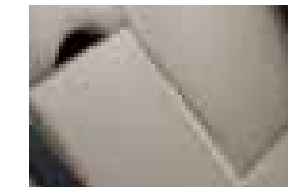


Soft Beige (G012)

## ERIKSBERG T-TEC/TEXTILE



Off Black (G600)

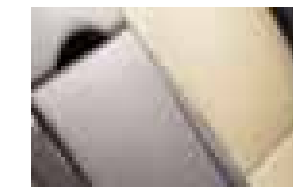


Soft Beige (G612)

## LEATHER-FACED



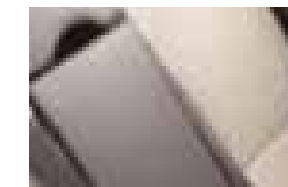
Off Black (G100)



Off Black/Lemon Green (G107)



Soft Beige (G112)



Soft Beige/Esspresso Brown (G116)

UPHOLSTERY	Upholstery Code	Interior Colour	Upholstery Colour	Dashboard Top/ Door Panel Colour	Door Insert Colour	Headliner Colour
Lomma Textile	G000	Anthracite Black	Off Black	Off Black/Off Black	Off Black	Soft Beige
	G012	Sandstone Beige	Soft Beige	Espresso Brown/Soft Beige	Soft Beige	Soft Beige
Eriksberg T-Tec/ Textile	G600	Anthracite Black	Off Black	Off Black/Off Black	Off Black	Soft Beige
	G612	Sandstone Beige	Soft Beige	Espresso Brown/Soft Beige	Soft Beige	Soft Beige
Leather-faced	G100	Anthracite Black	Off Black	Off Black/Off Black	Off Black	Soft Beige
	G107	Anthracite Black	Off Black/Lemon Green	Off Black/Off Black	Lemon Green	Soft Beige
	G112	Sandstone Beige	Soft Beige	Espresso Brown/Soft Beige	Soft Beige	Soft Beige
	G116	Sandstone Beige	Soft Beige/Esspresso Brown	Espresso Brown/Soft Beige	Espresso Brown	Soft Beige

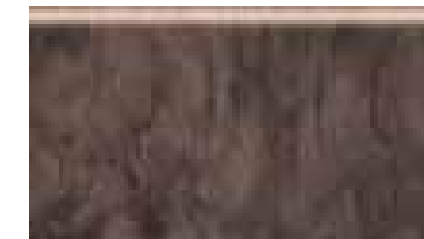


## Interior inlays

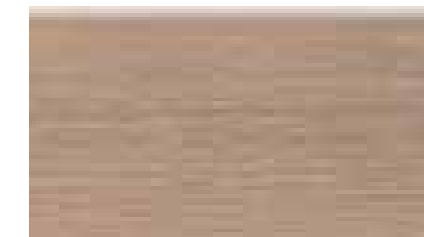
A selection of premium materials to complement your interior fabric.



Brushed Aluminium Trim



Classic Wood Trim



Nordic Light Oak Trim

NB It is not possible to reproduce exact original shades in printed matter. Please ask your Volvo dealer to show you samples.

# In fine detail

The nuts and bolts of your Volvo XC60. Whatever you need to know about your new car – whether that's fuel consumption, CO<sub>2</sub> emissions, top speed or boot space – you'll find it here.

ENGINE	T6 AWD Geartronic	2.4D AWD	D5 AWD
Configuration	Transverse - 24 valve	Transverse - 20 valve	Transverse - 20 valve
Cylinders	6	5	5
Engine capacity, cc	2953	2400	2400
Bore x stroke, mm	82 x 93.2	81 x 93.15	81 x 93.15
Max. output ECE, PS/kw/rpm	285/210/5600	163/120/4000	185/136/4000
Max. torque ECE, Nm/rpm	400/1500-4800	340/1750-2750	400/2000-2750
Octane rating	95 RON unleaded <sup>(i)</sup>	Turbo Diesel	Turbo Diesel
Fuel system	Port fuel injection	Common rail direct injection	Common rail direct injection
Compression ratio	9.3:1	17.3:1	17.3:1

PERFORMANCE	T6 AWD Geartronic	Manual	2.4D AWD Geartronic	Manual	D5 AWD Geartronic
Top speed, mph	130	121	118	127	124
Acceleration 0-60 mph, sec	7.1	10.0	10.4	9.0	9.4
0-62 mph (0-100 kmh), sec	7.5	10.5	10.9	9.5	9.9
Drag co-efficient	0.35		0.35		0.35

FUEL CONSUMPTION <sup>(ii)(iii)</sup>	T6 AWD Geartronic	Manual	2.4D AWD Geartronic	Manual	D5 AWD Geartronic
(Government Approved) Mpg (l/100 km)					
Urban	16.5 (17.1)	28.8 (9.8)	25.9 (10.9)	28.8 (9.8)	25.9 (10.9)
Extra Urban	31.7 (8.9)	45.6 (6.2)	41.5 (6.8)	45.6 (6.2)	41.5 (6.8)
Combined	23.7 (11.9)	37.7 (7.5)	34.0 (8.3)	37.7 (7.5)	34.0 (8.3)
CO <sub>2</sub> g/km	284	199	219	199	219
VED (Vehicle Excise Duty) Band	G	F	F	F	F

POWER STEERING SYSTEM	All models
(rack & pinion) Turning circle, m (ft)	11.7 (38.4)

LUGGAGE COMPARTMENT	To Glass Line	To Roof
Volume (rear seats up – luggage area) litres (cu.ft)	495 (17.5)	655 (23.1)
Volume (rear seats down) litres (cu.ft)	–	1455 (51.4)

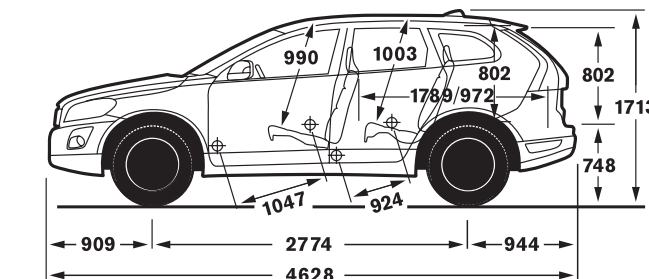
	T6 AWD Geartronic	2.4D AWD	D5 AWD
Brakes			
Disc Diameter Front, mm	328	328	328
Disc Diameter Rear, mm	302	302	302
Transmission			
Manual	–	6 speed	6 speed
Geartronic	6 speed	6 speed	6 speed
Fuel Tank Volume			
litres (gallons)	70 (15.4)	70 (15.4)	70 (15.4)

INSURANCE GROUPS	T6 AWD Geartronic	2.4D AWD	D5 AWD
S	–	13E	14E
SE	15E	13E	14E
SE Lux	15E	13E	14E

E = Exceeds security requirements for model concerned and group rating has been reduced.

WEIGHTS	T6 AWD Geartronic	Manual	2.4D AWD Geartronic	Manual	D5 AWD Geartronic
Min. kerb weight, kg (actual kerb weight dependent on spec)	1901	1865	1885	1869	1885
Max. possible towing weight braked, kg	2000	1600	2000	1800	2000
Max. towing weight unbraked approx, kg <sup>(iv)</sup>	750	750	750	750	750
Max. towball weight, kg	90	75	90	75	90
Max. total weight, kg	2440	2505	2505	2505	2505
Max. roof load, kg	100	100	100	100	100
Max. payload, kg (dependent on spec)	539	640	620	636	620

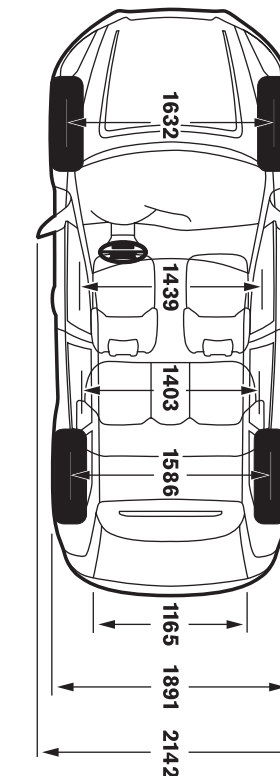
GROUND CLEARANCE	
Vehicle Ground Clearance, mm	230
With 2 Persons, mm	220
Wading Depth, mm	350
Approach Angle	22°
Departure Angle	27°
Breakover Angle	22°



- (i) For best performance and lowest fuel consumption 98 RON is recommended, 95 RON can be used for normal driving
- (ii) These results do not express or imply any guarantee of the fuel consumption of a particular car as there are inevitable differences between individual cars of the same model. Additionally driving style, traffic conditions, as well as the age and mileage and standard of maintenance will affect a car's fuel consumption.
- (iii) The Urban fuel consumption figure is based on typical city driving, including starting the car from cold. The Extra Urban figure is based on typical motorway driving and cruising. The Combined figure averages the consumption across both cycles.
- (iv) Unbraked towing weight must not exceed 50% of kerb weight up to a maximum of 750 kg.

## Notes

The weight of a vehicle will influence the level of CO<sub>2</sub> emitted. As a result, vehicles with higher levels of specification and factory fit options may emit higher levels of CO<sub>2</sub>. Once a vehicle has been built it will be given its own specific CO<sub>2</sub> emission on which the Vehicle Excise Duty will be charged. A weighbridge must be used to determine specific weights. Data valid for manual transmission unless specified. All measurements in mm. The max. output figures are quoted in PS (Pferdestärke), which is the metric equivalent of brake horsepower. NB Some of the information in this price list may not be correct due to product changes which may have occurred since it was printed. Some of the equipment described or shown may now be available only at extra cost. Before ordering, please ask your Volvo dealer for the latest information. The manufacturer reserves the right to make changes at any time, without notice, to prices, colour, materials, specifications and models. Volvo Car UK Limited, Globe Park, Marlow, Buckinghamshire, SL7 1YQ



# Accessories from Volvo

Of course, your Volvo XC60 won't be perfect until it's exactly how you want it. And that's why we offer a range of accessories so you can completely personalise your new car. **The prices quoted below exclude fitting costs and are correct at time of going to press** – please confirm the total cost with your local Volvo dealer.

ACCESSORIES	Basic £	VAT £	Rec Retail Price £
<b>EXTERIOR ACCESSORIES</b>			
Towbar – Detachable type with 13 pin Electrics <sup>(i)</sup>	£425.95	£74.54	£500.49
Load Carrier, for rails	£85.11	£14.89	£100.00
Roofbox – Sport Time 200 (440 litre volume) <sup>(ii)</sup>	£153.56	£26.87	£180.43
Mudflaps – Front	£27.32	£4.78	£32.10
Mudflaps – Rear	£27.32	£4.78	£32.10
Rear Skid Plate	£154.79	£27.09	£181.88
Front Skid Plate	£157.79	£27.61	£185.40
Side Scuff plates	£254.47	£44.53	£299.00
Side Running boards	£449.53	£78.67	£528.20
<b>INTERIOR ACCESSORIES</b>			
Boot Mat – textile/rubber reversible, Off Black	£86.81	£15.19	£102.00
Cargo Box	£85.11	£14.89	£100.00
Passenger Compartment Sport Floor Mats, Off Black	£51.06	£8.94	£60.00
Passenger Compartment Sport Floor Mats, Mocca Brown	£51.06	£8.94	£60.00
Sun Blinds – Rear doors	£34.04	£5.96	£40.00
Sun Blinds – Cargo area	£51.06	£8.94	£60.00
Bluetooth® hands free system	£174.73	£30.58	£205.31
<b>CHILD ACCESSORIES</b>			
Child Seat ISOFIX <sup>(iii)</sup>	£127.40	£6.37	£133.77
Infant Seat ISOFIX <sup>(iii)</sup>	£163.47	£8.17	£171.64
ISOFIX base	£94.63	£16.56	£111.19
Child Booster Cushion	£30.69	£5.37	£36.06
Child Booster Backrest (to go with above)	£30.69	£5.37	£36.06

(i) Detachable 7 pin and Fixed 13 and 7 pin also available – please ask your dealer for details.

(ii) Other roofboxes available – please ask your dealer for details.

(iii) VAT on Child seats is 5%.

**For further information and a complete list of all Volvo Accessories, take a look at the Accessory website at [www.volvocars.co.uk/accessories](http://www.volvocars.co.uk/accessories) or visit your local Volvo dealer.**

## Try an XC60 for yourself with Volvo Rental

Why not hire a Volvo XC60 – or any other Volvo – from Volvo Rental? You'll be guaranteed to drive a Volvo prepared to the highest standards by your local Volvo dealer. Call 0800 400 430 for more information today.



# The end is just the beginning

It's a simple idea; one point of contact for all your car ownership needs – whether it's about finding the right finance deal or who to contact in an emergency. To get the most out of owning your Volvo, trust Care by Volvo.

## STARTING OFF ON THE RIGHT FOOT

**You might be surprised how easy and flexible financing can be. Our range of finance, service and insurance options allows you to budget around one key factor – your lifestyle.**

## FINANCE

As part of Volvo, Volvo Car Finance has developed a series of funding plans that will provide you with maximum choice and flexibility when acquiring a Volvo<sup>(i)</sup>.

## INSURANCE

Volvo Owners Insurance is designed for Volvo drivers and because we know Volvos inside out, we can offer exactly the right tools and expertise, fitting only genuine Volvo parts by trained Volvo technicians<sup>(ii)</sup>. Because Volvo drivers have an excellent reputation, we can also offer extensive cover at a reasonable price<sup>(iii)</sup>.

Call now for your insurance quote on **0800 238 239**, quoting reference BROCH.



**WHAT NEXT?** If you'd like to find out more about the range of products and services that make up Care by Volvo, the story continues at [www.volvocars.co.uk](http://www.volvocars.co.uk). Alternatively you can contact your nearest Volvo dealer or request relevant brochures.

(i) Finance subject to status. Guarantees/indemnities may be required. Volvo Car Finance SL7 1YQ.

(ii) When using a Volvo approved repairer.

(iii) Volvo Owners Insurance is underwritten by Royal & Sun Alliance Insurance plc (No. 93792). Registered in England and Wales at St Mark's Court, Chart Way, Horsham, West Sussex RH12 1XL. Authorised and regulated by the Financial Services Authority. For your protection telephone calls will be recorded and may be monitored. All benefits are subject to qualifying status, terms and conditions, cover level and underwriting criteria. Service and repair benefits are subject to being carried out by a recommended repairer.

## MAKING LIFE EASIER

**Owning a Volvo should be a safe and enjoyable experience. To ensure it stays that way, we're committed to providing you with the best in support for as long as you own one.**

## SERVICE PROGRAMME

Your Volvo dealer has the unique know-how to tailor a service programme according to Volvo's strict recommendations and guarantees you years of safety and driving pleasure.

## VOLVO ON CALL

Subscribe to Volvo On Call and you'll never be completely on your own. It's a GPS-based communication system providing 24-hour access to both emergency and roadside assistance wherever you are. See the Volvo On Call brochure for more information.

## LOOKING AHEAD

**You'll probably never find out just how good some of these services are. But should the unexpected happen, we'd like to think that you'd be even happier you chose a Volvo.**

## ROADSIDE ASSISTANCE

Every new car comes with one year's Volvo Assistance cover. You'll enjoy free breakdown and recovery assistance, anywhere in Europe, 24 hours a day. You can even extend cover for £85 for one year or £155 for two years. Call Volvo Assistance on **08701 650 978**.

## WARRANTY

Every new Volvo comes with comprehensive protection. Our warranty covers the first three years or 60,000 miles, whichever comes first. There's a three year unlimited mileage warranty on the paintwork, and either eight or twelve years against rust perforation. If a component fails due to a defect or material fault, your dealer will swiftly rectify the problem, free of charge.

# Volvo. for life

For tax free sales, including Military, Diplomat and all other Export enquiries, contact Volvo Car UK Tourist & Diplomat Sales or Volvo Car UK British Military Sales on 01707 262 388 or e-mail to [vcukics@volvocars.com](mailto:vcukics@volvocars.com) or [bms@volvocars.com](mailto:bms@volvocars.com)

All 'On The Road' prices quoted in this price list include Volvo standard national delivery charge, inclusive of number plates at £480 and the VED (Vehicle Excise Duty) car tax. The 'On The Road' price also includes a £55 vehicle first registration fee (as set by the government – excludes Channel Islands and Isle of Man). Retail prices quoted do not include these additions.

NB Some of the information in this price list may not be correct due to product changes which may have occurred since it was printed. Before ordering, please ask your Volvo dealer for the latest information. The manufacturer reserves the right to make changes at any time, without notice, to prices, colour, materials, specifications and models.

**VOLVO**

Volvo Car UK Limited  
[www.volvocars.co.uk](http://www.volvocars.co.uk)

MODEL YEAR 2009 EDITION 2
PRINTED: AUGUST 2008
08/08/90010617/25