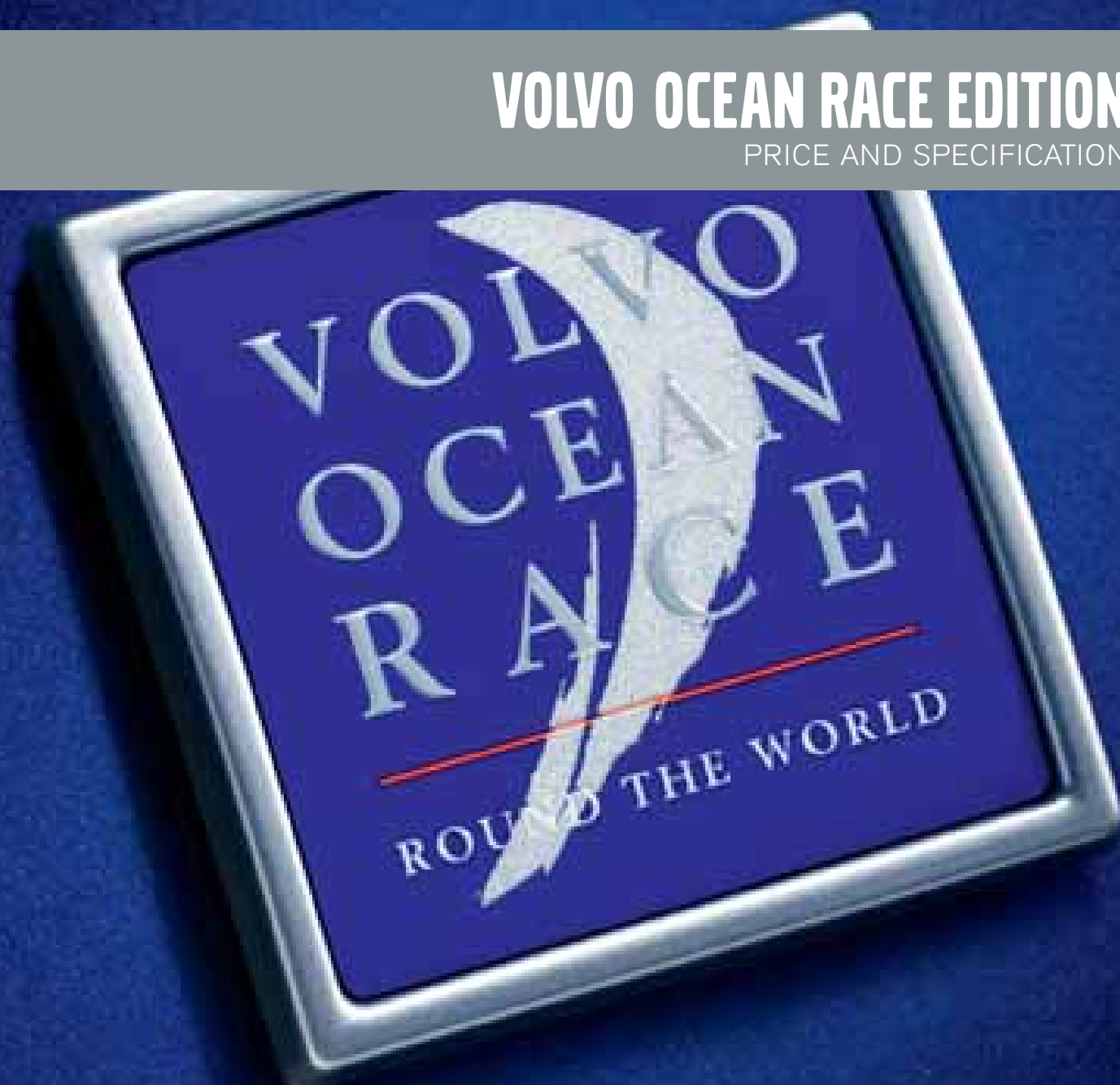


VOLVO OCEAN RACE EDITION

PRICE AND SPECIFICATION



A force of nature – designed by Volvo

The Volvo Ocean Race is the world's most gruelling ocean adventure, taking nearly nine months to sail 39,000 nautical miles of the globe's most treacherous seas. The race begins on 4 October 2008 in Alicante, Spain, finishing in St Petersburg, Russia, on 27 June 2009.

Volvo has proudly sponsored the epic Volvo Ocean Race since 2001 and, just like the extreme competition yachts that inspired them, the Volvo Ocean Race Edition V70, XC70 and XC90 models capture the race's true spirit of adventure and freedom.

This price list contains everything you need to select the Volvo Ocean Race Edition that's right for you.

Whatever you decide, you'll be choosing from a range that is the epitome of Volvo's long heritage at the forefront of innovation and design. Whether you're seeking performance, luxury or more practical space, the Volvo Ocean Race Edition range has it all.





VOLVO V70 OCEAN RACE EDITION

The V70 Volvo Ocean Race Edition is about pure adventure, passion and leading an active lifestyle. Its luxurious interior boasts supportive Leather-faced upholstery with sailing-inspired cross-stitching details. Then there's the 8 speaker High Performance sound audio system with 160 W output and intuitive features such as rain sensor and autodimming rear view mirror with compass. On the outside, unique 17" Silver Stone/Diamond Cut alloy wheels, a choice of Ocean Blue pearl or Electric Silver Coarse Flake metallic paintwork and chrome detail mouldings make sure your presence doesn't go unnoticed.

VOLVO XC70 OCEAN RACE EDITION

When it comes to versatility, the Volvo XC70 is a vehicle that keeps its promises. Boasting outstanding performance features such as Hill Descent Control and AWD with Instant Traction™, this is more than just a fair weather performer. Inside, you'll appreciate the luxurious Leather-faced upholstery, available in Soft Beige or Off Black and the unique Ocean Race design door panels. Innovations include the optional integrated child booster seats with two stages for growing children, laminated glass available all around and there's a powerful six-cylinder engine. Climb aboard the distinctive Ocean Race Edition – and let your imagination do the rest.

VOLVO XC90 OCEAN RACE EDITION

Do you know where your next adventure will take you? Whatever's round the corner, you'll be ready to face it in style with the Volvo XC90 Ocean Race Edition. From urban driving to the demands of the mountain road, this outstanding SUV not only gets you to where you need to go, it beautifully tackles any quest that's thrown your way. From your choice of Ocean Blue pearl or Electric Silver Coarse Flake metallic paintwork to the unique 18" Silver Stone or Diamond Cut alloy wheels – as well as the exclusive Ocean Race emblem on the front wing – every element of the Volvo XC90 Ocean Race Edition takes its cue from the drama and emotion of the ocean's waves. Climb aboard and the interior styling strongly evokes the emotion of sailing – from the unique Ocean Race tread plates and design door panels to the stitching on the upholstery, which traces its roots to sail making. Join your crew and let the adventure begin.

On the road

How much will it cost to get behind the wheel of a Volvo Ocean Race Edition? Simply decide whether it's the Volvo V70, XC70 or XC90 that's caught your eye, then take a look at the table opposite to see which engines are available for your chosen model. You'll find the price to the immediate starboard side.



V70 OCEAN RACE EDITION

	Basic £	VAT £	Rec Retail Price £	On the Road Price £
PETROL				
2.5T (200 PS) Ocean Race	£23,404.26	£4,095.74	£27,500.00	£28,485.00
3.2 (238 PS) Ocean Race Geartronic	£26,808.51	£4,691.49	£31,500.00	£32,485.00
DIESEL				
2.0D (136 PS) Ocean Race	£22,651.06	£3,963.94	£26,615.00	£27,345.00
2.4D (163 PS) Ocean Race	£23,927.66	£4,187.34	£28,115.00	£28,910.00
D5 (185 PS) Ocean Race	£24,778.72	£4,336.28	£29,115.00	£29,910.00
FLEXIFUEL				
2.0F (145 PS) Ocean Race	£22,127.66	£3,872.34	£26,000.00	£26,795.00
2.5FT (200 PS) Ocean Race	£23,659.57	£4,140.43	£27,800.00	£28,595.00

XC70 OCEAN RACE EDITION

	Basic £	VAT £	Rec Retail Price £	On the Road Price £
PETROL				
3.2 (238 PS) Ocean Race Geartronic	£29,089.36	£5,090.64	£34,180.00	£35,165.00
DIESEL				
D5 (185 PS) Ocean Race	£26,978.72	£4,721.28	£31,700.00	£32,495.00

XC90 OCEAN RACE EDITION

	Basic £	VAT £	Rec Retail Price £	On the Road Price £
PETROL				
3.2 AWD (238 PS) Ocean Race Geartronic	£31,587.23	£5,527.77	£37,115.00	£38,100.00
DIESEL				
D5 AWD (185 PS) Ocean Race	£30,723.40	£5,376.60	£36,100.00	£36,895.00

The right equipment

Preparation is everything when you're poised to set sail and face the elements. In the same way, it's essential that your Volvo Ocean Race Edition comes equipped with everything you'll need. Below you'll find the standard equipment lists for the Volvo V70, XC70 and XC90 models, plus optional equipment to personalise your choice of Volvo Ocean Race Edition model. And, as you'd expect from Volvo, there's also an array of industry-leading, cutting edge safety innovations.

STANDARD EQUIPMENT - SAFETY & SECURITY

	V70	XC70	XC90
Dual Stage Driver and Passenger Airbags	•	•	•
SIPS (Side Impact Protection System)	•	•	•
SIPS Airbags	•	•	•
IC (Inflatable Curtain)	•	•	•
RSC (Roll Stability Control)	•	•	•
WHIPS (Whiplash Protection System)	•	•	•
ABS (Anti-lock Brake System) and FBS (Fading Brake Support) with HBA (Hydraulic Brake Assist), OHB (Optimised Hydraulic Brakes), EBD (Electronic Brake Distribution) and RAB (Ready Alert Brakes)	•	•	•
ABS (Anti-lock Brake System), EBD (Electronic Brake Distribution) and Electronic Brake Assistance	•	•	•
DSTC (Dynamic Stability and Traction Control)	•	•	•
Hill Descent Control	•	•	•
Three Point Seat Belts (All Seats)	•	•	•
Seat Belt Pre-tensioners (All Seats)	•	•	•
Head Restraints (All Seats)	•	•	•
ISOFIX Attachment (Rear Seats) (2nd row for XC90)	•	•	•
Anti-theft Alarm including Immobiliser, Volume Sensor and Level Sensor	•	•	•
Key Integrated Remote Control Central Locking including Fuel Flap with Deadlocking System	•	•	•
Auto Open/Close Windows/Sunroof	•	•	•
Tinted Windscreen	•	•	•
Volvo Ocean Race Load Cover (Cargo Area)	•	•	•
3D Cargo Load System (Aluminium Cargofix Rails with 4 Attachments and 4 Aluminium High Level Anchor Points)	•	•	•
Lockable Load Floor	•	•	•
Visible VIN Plate	•	•	•
Day Running Lights	•	•	•
Headlamp Levelling System	•	•	•
Adaptive Brake Lights	•	•	•
High Level LED Brake Light	•	•	•
Power Parking Brake	•	•	•
Side Marker Illumination	•	•	•
Home Safe and Approach Lighting	•	•	•
IDIS (Intelligent Driver Information System)	•	•	•
Warning Triangle	•	•	•

STANDARD EQUIPMENT - EXTERIOR

	V70	XC70	XC90
Metallic/Inscription™ Paint	•	•	•
17" Pontos Alloy Wheels - 225/50 R17 W Tyres	•	•	•
17" Pontos Alloy Wheels - 235/55 R17 V Tyres	•	•	•
18" Notos Alloy Wheels - 235/60 R18 V Tyres	•	•	•
Locking Wheel Nuts	•	•	•
Tyre Sealant Kit	•	•	•
Autofolding Power Door Mirrors with Ground Lights	•	•	•
Power Adjustable and Heated Door Mirrors	•	•	•
Front Fog Lights	•	•	•
Rain Sensor - Automatic Windscreen Wiper Activation	•	•	•
Volvo Ocean Race Silver Roof Rails with Black Feet	•	•	•
Volvo Ocean Race Tread Plates	•	•	•
Colour Co-ordinated Bumpers and Door Mirrors	•	•	•
Colour Co-ordinated Door Mirrors	•	•	•
Exclusive Ocean Race Emblem on Front Wing	•	•	•
Front and Rear Skid Plates	•	•	•
Exterior Bright Chrome Accents	•	•	•
Electronic All Wheel Drive System with Instant Traction™ (Haldex Coupling)	•	•	•
Rear Park Assist	•	•	•

STANDARD EQUIPMENT - INTERIOR

	V70	XC70	XC90
ECC (Electronic Climate Control) with AQS (Air Quality System) and Pollen Filter	•	•	•
B Pillar Ventilation	•	•	•
Information Centre	•	•	•
Cruise Control	•	•	•
Front and Rear Power Windows	•	•	•
Illuminated Driver and Passenger Vanity Mirrors	•	•	•
Front and Rear Reading Lights	•	•	•
Autodimming Rear View Mirror with Compass	•	•	•
Front Centre Armrest	•	•	•
Grocery Bag Holder	•	•	•
12V Socket (Front and Rear Tunnel Console/Cargo Area)	•	•	•
Power Driver's Seat with Seat Memory	•	•	•
Height Adjustable Driver and Passenger Seats with Lumbar Support	•	•	•
Forward Folding Front Passenger Seat	•	•	•
Versatile Split-folding Rear Seat (40%/20%/40%)	•	•	•
2 Individual Folding 3rd Row Seats	•	•	•
3 Individual Folding 2nd Row Seats	•	•	•
Leather Steering Wheel and Gear Knob	•	•	•
Steering Wheel Remote Audio Controls	•	•	•
Chrome Rotary Knobs	•	•	•
Height and Reach Adjustable Steering Column	•	•	•
Volvo Ocean Race Brushed Aluminium Trim	•	•	•
Volvo Ocean Race Leather-faced Upholstery	•	•	•
Volvo Ocean Race Luxury Floor Mats	•	•	•
Unique Ocean Race Design Door Panels	•	•	•
High Performance Sound Audio System - 1 x CD/Radio, 4 x 40W Amplifier, Aux Input (MP3/WMA Compatible) and 8 Speakers	•	•	•
RTI Navigation System with RDS-TMC, Remote Control with Europe DVD Maps (not 2.0D)	•	•	•



OPTIONAL EQUIPMENT – SAFETY & SECURITY	Basic £	VAT £	Rec Retail Price £	V70	XC70	XC90
BLIS (Blind Spot Information System)	£382.98	£67.02	£450.00	o	o	o
Passenger Airbag Cut Off Switch	£21.28	£3.72	£25.00	o	o	o
PCC (Personal Car Communicator) with Heartbeat Sensor and Keyless Drive	£425.53	£74.47	£500.00	o	o	n/a
ACC (Adaptive Cruise Control) with Distance Alert and Collision Warning with Auto Brake (not 2.0D, 2.0F, 2.5FT) ⁽ⁱ⁾	£1,106.38	£193.62	£1,300.00	o	o	n/a
LDW (Lane Departure Warning) with DAC (Driver Alert Control) ⁽ⁱ⁾	£425.53	£74.47	£500.00	o	o	n/a
Dark Tinted Windows (Rear Side Doors and Cargo Area)	£212.77	£37.23	£250.00	o	o	n/a
Dark Tinted Rear Windows (Rear Windows and Rear Screen) ⁽ⁱⁱ⁾	£297.88	£52.12	£350.00	n/a	n/a	o
Private Locking	£21.28	£3.72	£25.00	o	o	n/a
360° Laminated Windows including Cargo Area (Front Side Windows are Water Repellent)	£382.98	£67.02	£450.00	o	o	n/a
Laminated Water Repellent Side Windows ⁽ⁱⁱ⁾	£255.32	£44.68	£300.00	n/a	n/a	o
IR (Infrared) Reflective Glass Windscreen	£127.66	£22.34	£150.00	o	o	n/a
IR (Infrared) Reflective Glass Windscreen and Front Windows	£208.51	£36.49	£245.00	n/a	n/a	o
Power Child Locks (Rear Doors)	£63.83	£11.17	£75.00	o	o	n/a
Power Child Locks (Rear Doors)	£127.66	£22.34	£150.00	n/a	n/a	o
Homelink	£42.55	£7.45	£50.00	o	o	o
First Aid Kit	£21.28	£3.72	£25.00	o	o	o

OPTIONAL EQUIPMENT – EXTERIOR	Basic £	VAT £	Rec Retail Price £	V70	XC70	XC90
Tempa Spare Wheel	–	–	–	nco	nco	nco
Power Tailgate	£297.87	£52.13	£350.00	o	o	n/a
Rear Park Assist	£297.87	£52.13	£350.00	o	o	•
Front and Rear Park Assist	£553.19	£96.81	£650.00	o	o	n/a
Load Compensating Suspension	£425.53	£74.47	£500.00	o	o	•
Active Four-C Chassis (Continuously Controlled Chassis Concept) ⁽ⁱⁱⁱ⁾	£936.17	£163.83	£1,100.00	o	o	n/a

• = Standard, o = optional, n/a = not available, nco = no cost option, u (£) = upgrade, ® = Registered Trademark.

(i) Cannot be ordered in conjunction with IR (Infrared) Reflective Glass Windscreen.

(ii) Laminated Water Repellent Side Windows and Dark Tinted Rear Windows cannot be combined.

(iii) Four-C Chassis cannot be combined with Load Compensating Suspension.

(iv) Cannot be ordered on D5 Manual.

(v) Heated Rear Seats must be combined with Heated Front Seats and cannot be combined with Integrated 2-stage Booster Cushions x2.

(vi) Dolby and Pro Logic Surround Sound™ are trademarks of Dolby Laboratories Licensing Corporation.

(vii) If Dynaudio Premium Sound Audio is ordered with RTI Navigation System or Communications Pack, system includes 11 speakers.

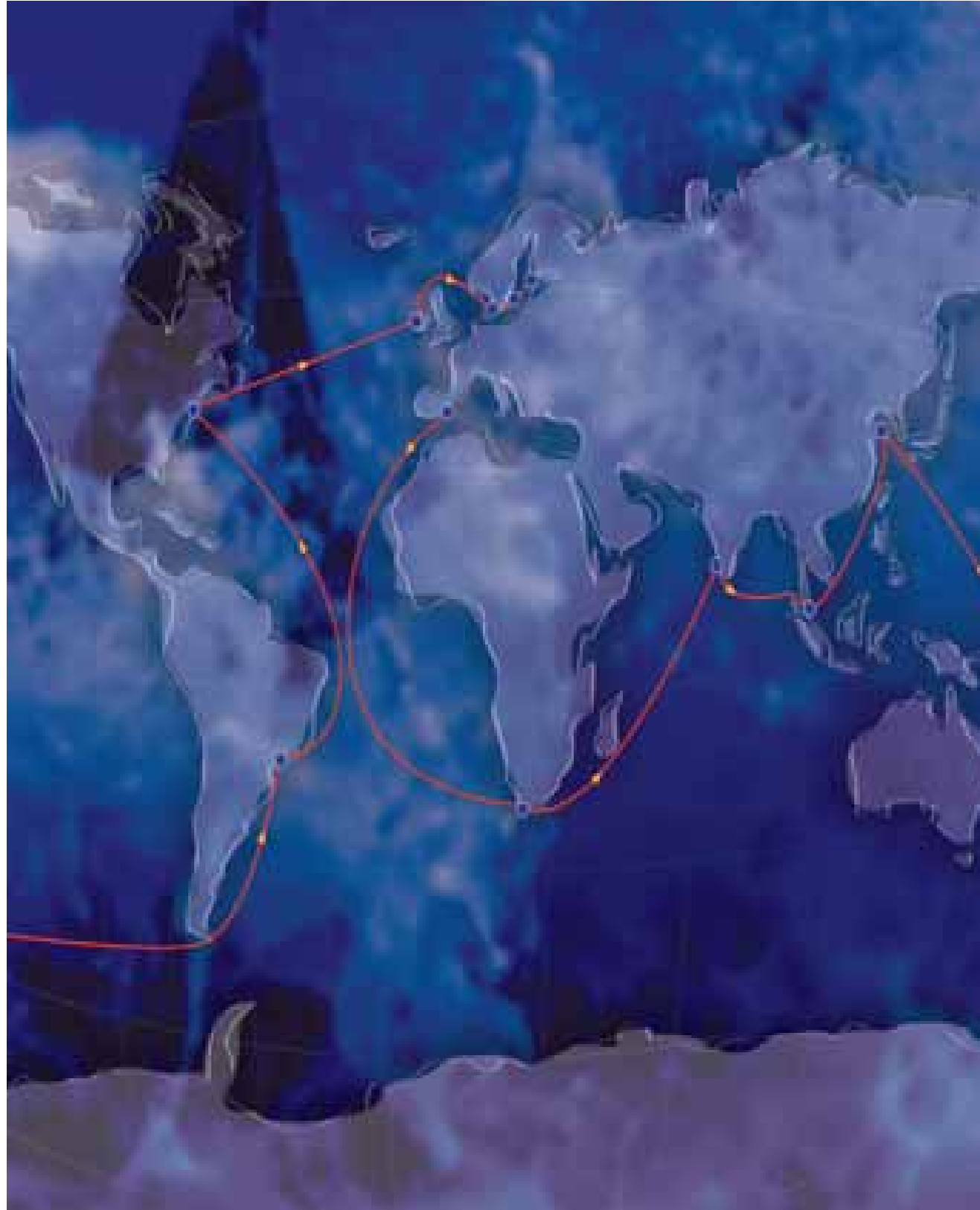
(viii) When Rear Seat Entertainment is ordered on XC90, Dark Tinted Rear Windows and Rear Screen are included.

(ix) Must be ordered in conjunction with Rear Seat Entertainment.

(x) Volvo On Call includes Safety package (Security package available at additional cost). Must be ordered in conjunction with RTI Navigation System with RDS-TMC, Remote Control with Europe Maps.

(xi) Cannot be ordered in conjunction with Dual Band Integrated GSM Telephone and Volvo On Call.

(xii) Must be ordered in conjunction with accessory Rubber Floor Mats and Luggage Compartment Mat. CZIP cannot be combined with Luxury Floor Mats, Winter Pack with Active Bending Headlamps and Front and Rear Ashtray with Cigarette Lighter.



OPTIONAL EQUIPMENT – INTERIOR	Basic £	VAT £	Rec Retail Price £	V70	XC70	XC90
Geartronic Transmission (Standard 3.2) (not 2.0D and 2.0F)	£1,191.49	£208.51	£1,400.00	o	o	o
Speed Dependent Steering System	£191.49	£33.51	£225.00	o	o	o
Air Conditioning for 3rd Row of Seats ^(iv)	£314.89	£55.11	£370.00	n/a	n/a	o
Power Glass Tilt and Slide Sunroof	£723.40	£126.60	£850.00	o	o	o
Rear Centre Armrest with Cupholders and Storage	£29.79	£5.21	£35.00	o	o	n/a
Front and Rear Ashtray with Cigarette Lighter	–	–	–	nco	nco	nco
Power Driver and Passenger Seats with Driver's Seat Memory	£510.64	£89.36	£600.00	o	o	o
Heated Front Seats	£191.49	£33.51	£225.00	o	o	o
Heated Rear Seats ^(v)	£191.49	£33.51	£225.00	o	o	n/a
6 x CD Player	£212.77	£37.23	£250.00	o	o	o
Dynaudio Premium Sound Audio System – 1 x CD/Radio with Dolby Pro Logic II Digital Surround Sound ^(vi) , 5 x 130W Amplifier, Aux Input (MP3/WMA Compatible) and 12 Dynaudio Speakers	£851.06	£148.94	£1,000.00	o	o	n/a
Dynaudio Premium Sound Audio System – 6 x CD/Radio with Dolby Pro Logic II ^(vi) Digital Surround Sound ^(vi) , 5 x 130W Amplifier, Aux Input (MP3/WMA Compatible) and 12 Dynaudio Speakers ^(vii)	£851.06	£148.94	£1,000.00	n/a	n/a	o
Subwoofer (2 x 6.5" Subwoofer with 2 x 130W Amplifier)	£153.19	£26.81	£180.00	o	o	n/a
Rear Seat Entertainment with 1 x DVD Player in Front Centre Armrest, 2 x 8" screens, 2 x IR Headphones and Remote Control ^(viii)	£1,148.94	£201.06	£1,350.00	o	o	o
Rear Seat Audio Console with Headphone Sockets x 2 (XC90 x4)	£80.85	£14.15	£95.00	o	o	o
Digital TV ^(ix)	£340.43	£59.57	£400.00	o	o	o
RTI Navigation System with RDS-TMC, Remote Control with Europe Maps (V70 – 2.0D only)	£1,574.47	£275.53	£1,850.00	o	o	o
Bluetooth® Handsfree System ^(x)	£212.77	£37.23	£250.00	o	o	n/a
Dual Band Integrated GSM Telephone and Volvo On Call ^(xi)	£680.85	£119.15	£800.00	o	o	o
CZIP (Clean Zone Interior Package) ^(xii)	£102.13	£17.87	£120.00	o	o	n/a

	Basic £	VAT £	Rec Retail Price £	V70	XC70	XC90
WINTER PACK Heated Front Seats, Headlamp Cleaning System and Heated Washer Nozzles	£319.15	£55.85	£375.00	o	o	n/a
Winter Pack with Active Bending Headlamps	£787.23	£137.77	£925.00	o	o	n/a
WINTER PACK Heated Front Seats and Headlamp Cleaning System	£234.04	£40.96	£275.00	n/a	n/a	o
Winter Pack with Active Bending Headlamps	£744.68	£130.32	£875.00	n/a	n/a	o
FAMILY PACK Integrated 2-Stage Booster Cushions x 2, Power Child Locks (Rear Doors) and Passenger Airbag Cut Off Switch	£221.28	£38.72	£260.00	o	o	n/a
COMMUNICATIONS PACK (V70 – 2.0D only) RTI Navigation System with RDS-TMC, Remote Control with Europe Maps, PCC (Personal Car Communicator) with Heartbeat Sensor and Keyless Drive and Bluetooth® Handsfree System ^(xi)	£1,702.13	£297.87	£2,000.00	o	o	n/a
Communications Pack (not 2.0D)	£468.09	£81.91	£550.00	o	n/a	n/a
COMMUNICATIONS PACK RTI Navigation System with RDS-TMC, Remote Control with Europe Maps, Dual Band Integrated GSM Telephone and Volvo On Call ^(x)	£2,170.21	£379.79	£2,550.00	n/a	n/a	o
DRIVER SUPPORT PACK (not 2.0D, 2.0F, 2.5T and 2.5FT) BLIS (Blind Spot Information System), ACC (Adaptive Cruise Control) with Distance Alert and Collision Warning with Auto Brake and LDW (Lane Departure Warning) with DAC (Driver Alert Control) ⁽ⁱ⁾	£1,276.60	£223.40	£1,500.00	o	o	n/a
SECURITY PACK PCC (Personal Car Communicator) with Heartbeat Sensor and Keyless Drive, 360° Laminated Windows including Cargo Area (Front Side Windows are Water Repellent) and TPMS (Tyre Pressure Monitoring System)	£638.30	£111.70	£750.00	o	n/a	n/a
SECURITY PACK PCC (Personal Car Communicator) with Heartbeat Sensor and Keyless Drive, 360° Laminated Windows including Cargo Area (Front Side Windows are Water Repellent)	£510.64	£89.36	£600.00	n/a	o	n/a
ENTERTAINMENT SUPPORT PACK RTI Navigation System with RDS-TMC, Remote Control and Europe Map ^(vii) , BLIS (Blind Spot Information System) and Rear Seat Entertainment with 1 x DVD Player in Front Centre Armrest, 2 x 8" Screens, 2 x IR Headphones, Remote Control and Dark Tinted Windows (Rear Windows and Rear Screen)	£2,425.53	£424.47	£2,850.00	n/a	n/a	o

What's your style?

Celebrating the freedom and energy of the Volvo Ocean Race, every model comes in a choice of two stunning colours: vibrant Ocean Blue pearl and Inscription™ Electric Silver Coarse Flake metallic. Equally stylish. Equally dynamic. Which one's right for you?



458 Ocean Blue pearl



477 Inscription™ Electric Silver Coarse Flake metallic



458 Ocean Blue pearl



477 Inscription™ Electric Silver Coarse Flake metallic



458 Ocean Blue pearl



477 Inscription™ Electric Silver Coarse Flake metallic





The wheels

The Volvo Ocean Race Edition models come complete with stylish and unique Silver Stone or Diamond Cut alloy wheels, dependent on which exterior colour you choose. The Volvo V70 and XC70 models are equipped with 17" alloys, while the XC90 benefits from 18" alloy wheels, dramatically adding to the exterior styling of your choice of Volvo Ocean Race Edition.



17" Pontos
(Silver Stone or Diamond Cut)*
(V70/XC70)



18" Notos
(Silver Stone or Diamond Cut)*
(XC90)

* Silver Stone wheels are available with Ocean Blue cars only; Diamond Cut wheels are available with Inscription™ Electric Silver Coarse Flake metallic cars only.

Unique Volvo Ocean Race tailoring

The Volvo Ocean Race Edition models all feature leather upholstery with unique Ocean Race details such as the stitching which traces its roots to sail making. Whichever model you choose, you'll be surrounded by luxury.

VOLVO OCEAN RACE LEATHER-FACED



Off Black

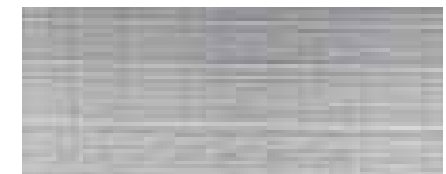


Soft Beige



Interior inlay

A perfect counterpoint to both the Off Black or Soft Beige interiors, this Volvo Ocean Race Brushed Aluminium inlay adds the finishing touch.



Volvo Ocean Race Brushed Aluminium

NB It is not possible to reproduce exact original shades in printed matter.

In fine detail

The nuts and bolts of your Volvo V70, XC70 or XC90 Ocean Race Edition. Whatever you need to know about your new car – whether that's fuel consumption, CO2 emissions or top speed – you'll find it here.



- (i) For best performance and lowest fuel consumption 98 RON is recommended, 95 RON can be used for normal driving.
- (ii) The results do not express or imply any guarantee of the fuel consumption of a particular car as there are inevitable differences between individual cars of the same model.
- (iii) The Urban fuel consumption figure is based on typical city driving, including starting the car from cold. The Extra Urban figure is based on typical motorway driving and cruising. The Combined figure averages the consumption across both cycles.

Notes

The weight of the vehicle will influence the level of CO₂ emitted. As a result, vehicles with higher levels of specification and factory fit options may emit higher levels of CO₂. Once a vehicle has been built it will be given its own specific CO₂ emission on which Vehicle Excise Duty will be charged.

A weighbridge must be used to determine specific weights.

Data valid for manual transmission unless specified.

Gt = Geartronic Automatic Transmission.

All measurements in mm.

The Max. output figures are quoted in PS (Pferdestärke), which is the metric equivalent of brake horsepower.

NB Some of the information in this price list may not be correct due to product changes which may have occurred since it was printed. Some of the equipment described or shown may now be available only at extra cost. Before ordering, please ask your Volvo dealer for the latest information. The manufacturer reserves the right to make changes at any time, without notice, to prices, colour, materials, specifications and models.

For full technical specification, please refer to the individual model price lists.

V70							
ENGINE	2.5T	3.2 Gt	2.0D Manual	2.4D	D5	2.0F Flexifuel Manual	2.5FT Flexifuel
Configuration	Transverse 20 valve	Transverse 24 valve	Transverse 16 valve	Transverse 20 valve	Transverse 20 valve	Transverse 16 valve	Transverse 20 valve
Cylinders	5	6	4	5	5	4	5
Engine capacity, cc	2521	3192	1997	2400	2400	1999	2521
Bore x stroke, mm	83 x 93.2	84 x 96	85 x 88	81 x 93.2	81 x 93.2	87.5 x 83.1	83 x 93.2
Max. output ECE, PS kW rpm	200 147 4800	238 175 6200	136 100 4000	163 120 4000	185 136 4000	145 107 6000	200 147 4800
Max. torque ECE, Nm rpm	300 1500-4500	320 3200	320 2000	340 1750-2750	400 2000-2750	190 4500	300 1500-4500
Octane rating	95 RON unleaded ⁽ⁱ⁾	95 RON unleaded ⁽ⁱ⁾	Turbo Diesel	Turbo Diesel	Turbo Diesel	95 RON unleaded ⁽ⁱ⁾ Bio-ethanol (E85)	95 RON unleaded ⁽ⁱ⁾ Bio-ethanol (E85)
Fuel system	Multipoint fuel injection	Port fuel injection	Common rail direct injection	Common rail direct injection	Common rail direct injection	Multipoint fuel injection	Multipoint fuel injection

INSURANCE GROUPS	2.5T	3.2 Gt	2.0D Manual	2.4D	D5	2.0F Flexifuel Manual	2.5FT Flexifuel
Volvo V70	16E	TBC	13E	14E	15E	TBC	TBC

E = Exceeds security requirements for model concerned and group rating has been reduced.

PERFORMANCE	2.5T		3.2 Gt	2.0D Man	2.4D Gt		D5 Gt		2.0F Flexifuel Man	2.5FT Flexifuel Gt	
	Man	Gt			Man	Gt	Man	Gt		Man	Gt
Top speed (mph)	130	130	146	121	130	127	140	134	124	130	130
Acceleration 0-60 mph (sec)	7.6	8.0	7.8	10.9	9.4	10.0	8.4	8.9	11.5	7.6	8.0
0-62 mph (0-100 kmh) (sec)	8.1	8.5	8.4	11.4	9.9	10.5	8.9	9.4	12.1	8.1	8.5

FUEL CONSUMPTION ⁽ⁱⁱ⁾⁽ⁱⁱⁱ⁾	2.5T		3.2 Gt	2.0D Man	2.4D Gt		D5 Gt		2.0F Flexifuel Man	2.5FT Flexifuel Gt	
	Man	Gt			Man	Gt	Man	Gt		Man	Gt
Urban mpg (l/100 km)	20.9 (13.5)	18.5 (15.3)	18.3 (15.4)	37.7 (7.5)	32.8 (8.6)	28.0 (10.1)	32.8 (8.6)	28.0 (10.1)	24.1 (11.7)	21.2 (13.3)	18.6 (15.2)
Extra Urban mpg (l/100 km)	39.2 (7.2)	37.7 (7.5)	36.7 (7.7)	56.5 (5.0)	49.6 (5.7)	45.6 (6.2)	49.6 (5.7)	45.6 (6.2)	40.9 (6.9)	39.2 (7.2)	37.2 (7.6)
Combined mpg (l/100 km)	29.7 (9.5)	27.2 (10.4)	26.9 (10.5)	47.9 (5.9)	42.2 (6.7)	36.7 (7.7)	42.2 (6.7)	36.7 (7.7)	32.8 (8.6)	30.1 (9.4)	27.2 (10.4)
CO ₂ g/km	227	248	251	157	178	203	178	203	206	224	247
VED (Vehicle Excise Duty) Band	G	G	G	D	E	F	E	F	F	F	G

WEIGHTS	2.5T		3.2 Gt	2.0D Man	2.4D Gt		D5 Gt		2.0F Flexifuel Man	2.5FT Flexifuel Gt	
	Man	Gt			Man	Gt	Man	Gt		Man	Gt
Min. kerb weight, kg (actual kerb weight dependent on spec.)	1715	1731	1770	1714	1740	1757	1740	1757	1622	1715	1731
Max. possible towing weight braked, kg	1800	1800	1800	1500	1500	1800	1800	2000	1500	1800	1800
Max. towball weight, kg	75	75	75	75	75	75	75	90	75	75	75
Max. payload, kg (dependent on spec)	545	549	540	556	560	553	560	553	558	545	549

XC70		
ENGINE	3.2 Gt	D5
Configuration	Transverse 24 valve	Transverse 20 valve
Cylinders	6	5
Engine capacity, cc	3192	2400
Bore x stroke, mm	84 x 96	81 x 93.1
Max. output ECE, PS kW rpm	238 175 6200	185 136 4000
Max. torque ECE, Nm rpm	320 3200	400 2000-2750
Octane rating	95 RON unleaded ⁽ⁱ⁾	Turbo Diesel
Fuel system	Port fuel injection	Common rail direct injection

INSURANCE GROUPS	3.2 Gt	D5
Volvo XC70	17E	15E

E = Exceeds security requirements for model concerned and group rating has been reduced.

PERFORMANCE	3.2 Gt	D5 Gt	
		Man	Gt
Top speed (mph)	134	130	127
Acceleration 0-60 mph (sec)	8.1	8.8	9.4
0-62 mph (0-100 kmh) (sec)	8.6	9.3	9.9

FUEL CONSUMPTION ⁽ⁱⁱ⁾⁽ⁱⁱⁱ⁾	3.2 Gt	D5 Gt	
		Man	Gt
Urban mpg (l/100 km)	17.2 (16.4)	29.4 (9.6)	26.9 (10.5)
Extra Urban mpg (l/100 km)	33.2 (8.5)	44.8 (6.3)	40.4 (7.0)
Combined mpg (l/100 km)	24.8 (11.4)	37.7 (7.5)	34.0 (8.3)
CO ₂ g/km	272	199	219
VED (Vehicle Excise Duty) Band	G	F	F

WEIGHTS	3.2 Gt	D5 Gt	
		Man	Gt
Min. kerb weight, kg (actual kerb weight dependent on spec.)	1863	1841	1857
Max. possible towing weight braked, kg	1800	2100	2100
Max. towball weight, kg	75	90	90
Max. payload, kg (dependent on spec)	537	549	543

XC90		
ENGINE	3.2 Gt	D5
Configuration	Transverse 24 valve	Transverse 20 valve
Cylinders	6	5
Engine capacity, cc	3192	2400
Bore x stroke, mm	84 x 96	81 x 93.1
Max. output ECE, PS kW rpm	238 175 6200	185 136 4000
Max. torque ECE, Nm rpm	320 3200	400 2000-2750
Octane rating	95 RON unleaded ⁽ⁱ⁾	Turbo Diesel
Fuel system	Port fuel injection	Common rail direct injection

INSURANCE GROUPS	3.2 Gt	D5
Volvo XC90	16E	15E

E = Exceeds security requirements for model concerned and group rating has been reduced.

PERFORMANCE	3.2 Gt	D5 Gt	
		Man	Gt
Top speed (mph)	130	121	118
Acceleration 0-60 mph (sec)	8.9	10.3	11.1
0-62 mph (0-100 kmh) (sec)	9.5	10.9	11.5

FUEL CONSUMPTION ⁽ⁱⁱ⁾⁽ⁱⁱⁱ⁾	3.2 Gt	D5 Gt	
		Man	Gt
Urban mpg (l/100 km)	16.4 (17.2)	26.4 (10.7)	25.4 (11.1)
Extra Urban mpg (l/100 km)	30.7 (9.2)	40.9 (6.9)	40.4 (7.0)
Combined mpg (l/100 km)	23.3 (12.1)	34.0 (8.3)	33.2 (8.5)
CO ₂ g/km	289	219	224
VED (Vehicle Excise Duty) Band	G	F	F

WEIGHTS	3.2 Gt	D5 Gt	
		Man	Gt
Min. kerb weight, kg (actual kerb weight dependent on spec.)	2148	2136	2152
Max. possible towing weight braked, kg	2250	2250	2250
Max. towball weight, kg	90	90	90
Max. payload, kg (dependent on spec)	612	604	598

Volvo. for life

For tax free sales, including Military, Diplomat and all other Export enquiries, contact Volvo Car UK Tourist & Diplomat Sales or Volvo Car UK British Military Sales on **01707 262 388** or e-mail to vcukics@volvocars.com or bms@volvocars.com

All 'On The Road' prices quoted in this price list include Volvo standard national delivery charge, inclusive of number plates at £530* and the VED (Vehicle Excise Duty) car tax. The 'On The Road' price also includes a £55 vehicle first registration fee (as set by the government – excludes Channel Islands and Isle of Man). Retail prices quoted do not include these additions.

NB Some of the information in this price list may not be correct due to product changes which may have occurred since it was printed. Before ordering, please ask your Volvo dealer for the latest information. The manufacturer reserves the right to make changes at any time, without notice, to prices, colour, materials, specifications and models.

* As of 1st October 2008 for V70 and 1st September 2008 for XC70 and XC90.