



SWEDEN 1996-PRESENT

Volvo V70 T5



NUMBER 37

The addition of a turbocharger to the otherwise unassuming Volvo V70 station wagon transforms it into a real street scorcher. The company that was once known for top-notch safety now added high performance to their cars' option lists.

Produced by
Volvo Car Corp,
Göteborg, Sweden



VITAL STATISTICS

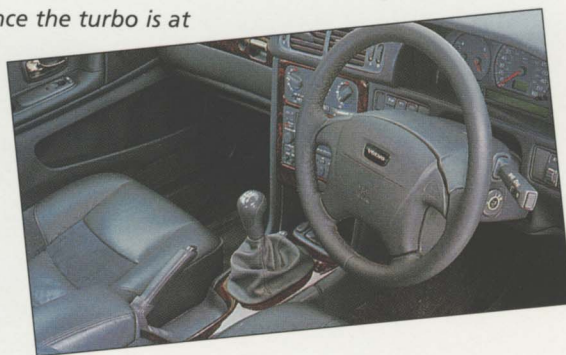
Top speed:	152 mph
0-60 mph:	6.9 sec.
Engine type:	In-line five
Displacement:	2,319 cc
Max power:	236 bhp at 5,100 rpm
Max torque:	244 lb-ft at 2,100 rpm
Weight:	3,371 lbs.
Gas mileage:	25 mpg
Price (1998):	\$34,510



"...turbocharged performance."

"This car's performance is highly impressive. The V70 R will scramble away from the line with convincing force thanks to its turbocharged performance. There is some lag, but once the turbo is at full boost, the horizon is really reeled in. Around curves, the tires provide plenty of grip and, like all Volvos, the cornering is always safe and secure. Its ride might be slightly jittery, but there's no shortage of performance."

There is a very Scandinavian feel to the cabin: austere trim and an upright but very comfortable driving position.



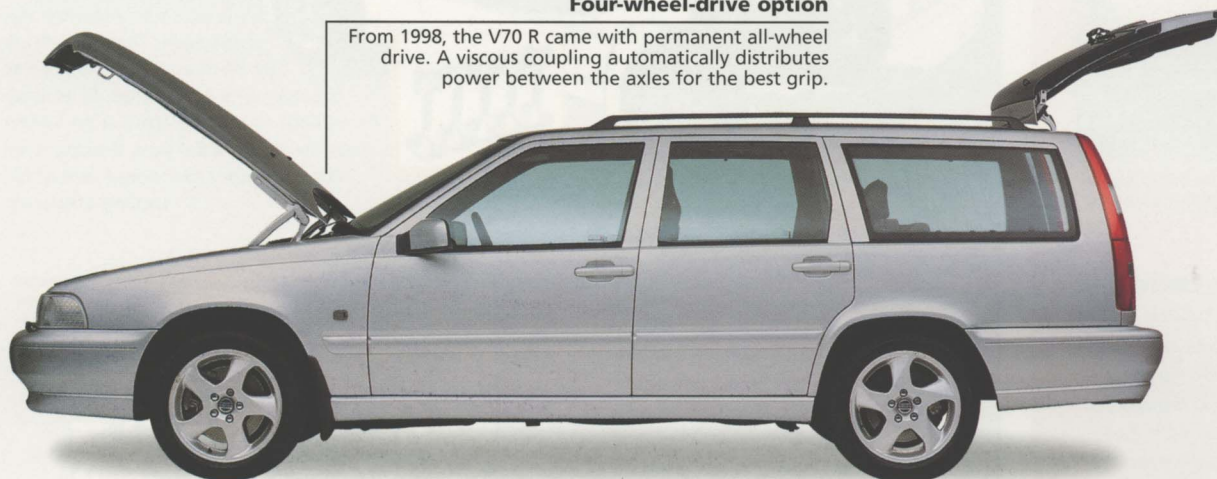
Volvo V70 T5



The V70 is a very capacious station wagon, yet underneath its subdued skin lies the heart of a lion: a massively powerful turbocharged engine that is matched with quick-action steering.

Four-wheel-drive option

From 1998, the V70 R came with permanent all-wheel drive. A viscous coupling automatically distributes power between the axles for the best grip.



Sports alloy wheels

Attractive, large-diameter, five-spoke, alloy wheels are part of the understated V70 performance package. For most markets, these are 17-inch wheels fitted with low-profile 215/45 Pirelli P Zero tires.

Station wagon body

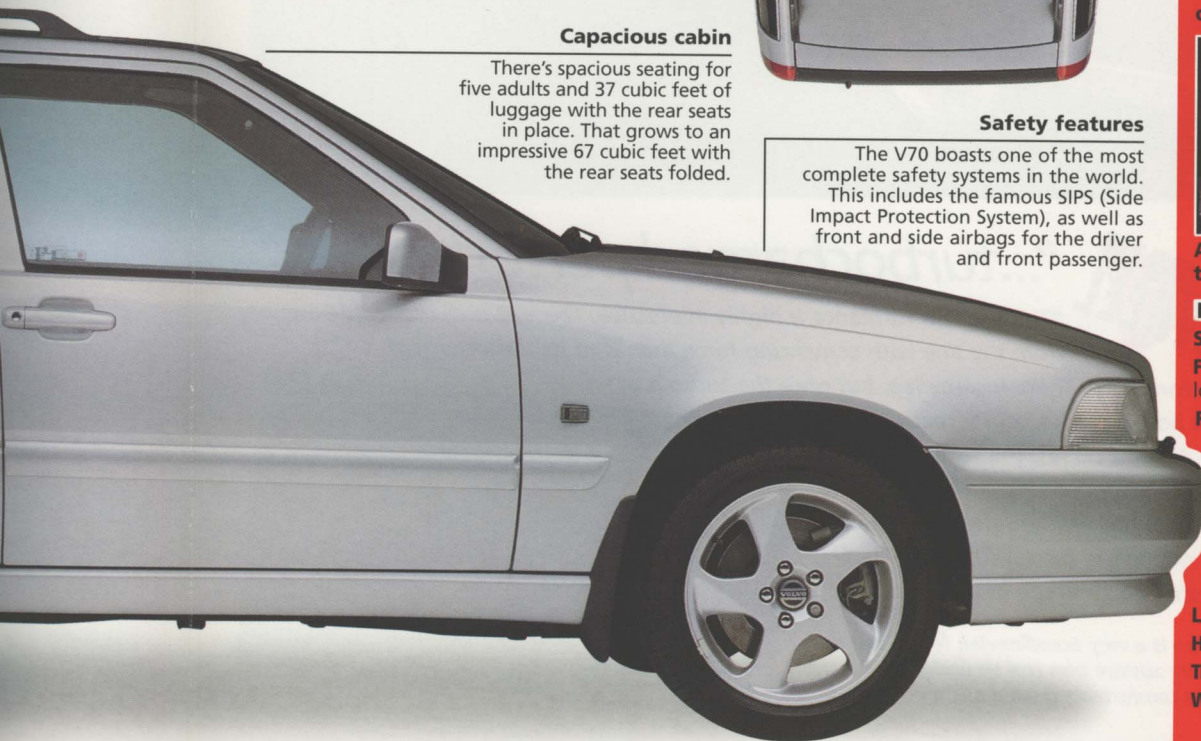
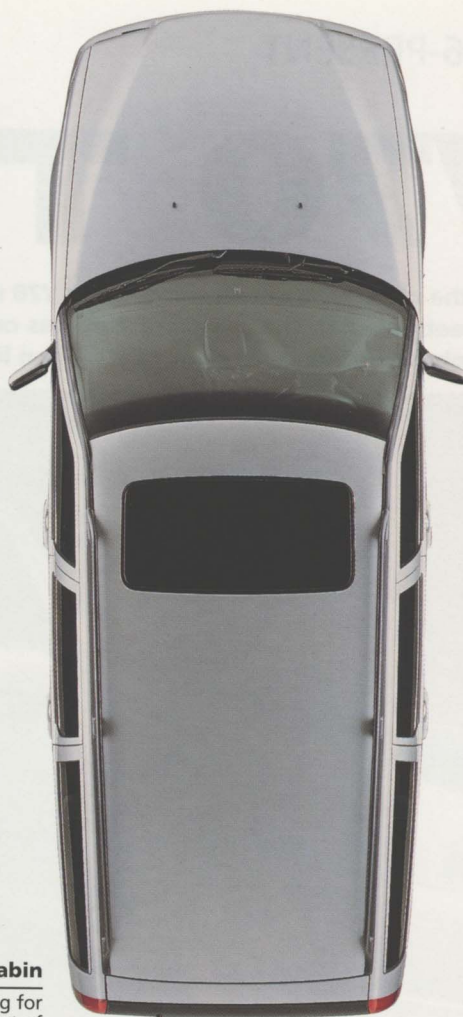
Slightly less square-set and formal than previous Volvos, the V70's upright pose is nevertheless distinctively Swedish. The V in the car's name indicates 'vagen,' or wagon.



Traction control

Containing the ferocious power of a turbocharger would be almost impossible without traction control to limit wheelspin. Volvo's traction control system operates the front wheels only.





Capacious cabin

There's spacious seating for five adults and 37 cubic feet of luggage with the rear seats in place. That grows to an impressive 67 cubic feet with the rear seats folded.

Safety features

The V70 boasts one of the most complete safety systems in the world. This includes the famous SIPS (Side Impact Protection System), as well as front and side airbags for the driver and front passenger.

Specifications

1998 Volvo V70 T5

ENGINE

Type: Inline five-cylinder

Construction: Aluminum block and cylinder head

Valve gear: Four valves per cylinder operated by double overhead camshafts

Bore and stroke: 3.19 in. x 3.54 in.

Displacement: 2,319 cc

Compression ratio: 8.5:1

Induction system: Electronic fuel injection

Maximum power: 236 bhp at 5,100 rpm

Maximum torque: 244 lb-ft at 2,100 rpm

TRANSMISSION

Five-speed manual

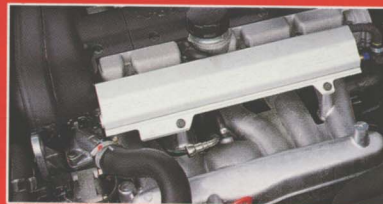
BODY/CHASSIS

Unitary monocoque construction with steel five-door station wagon body

SPECIAL FEATURES



Headlight wipers are fitted for optimum nighttime visibility.



A turbocharger is the tasty icing on the V70's five-cylinder cake.

RUNNING GEAR

Steering: Rack-and-pinion

Front suspension: Struts with coil springs, lower link, shocks and anti-roll bar

Rear suspension: Multilink with coil springs, shock absorbers and anti-roll bar

Brakes: Vented discs (front) and solid discs (rear)

Wheels: Alloy 15-, 16- or 17-in. dia.

Tires: 205/55, 205/50 or 205/45

DIMENSIONS

Length: 185.9 in. **Width:** 69.3 in.

Height: 56.2 in. **Wheelbase:** 104.9 in.

Track: 59.8 in. (front), 57.8 in. (rear)

Weight: 3,371 lbs.

Milestones

1992 Volvo launches

the 850 to replace the aging 700- and 900-series cars. The 850 becomes a commercial and racing success and sales begin to rise.



Volvo caters to the SUV market with the 4x4 version of its V70 station wagon.

1996 More rounded styling

than the boxy 850 series versions characterize the S70 sedans and V70 wagons which arrive as 850 replacements in December of this year. The top-of-the-range model is the turbocharged T5.

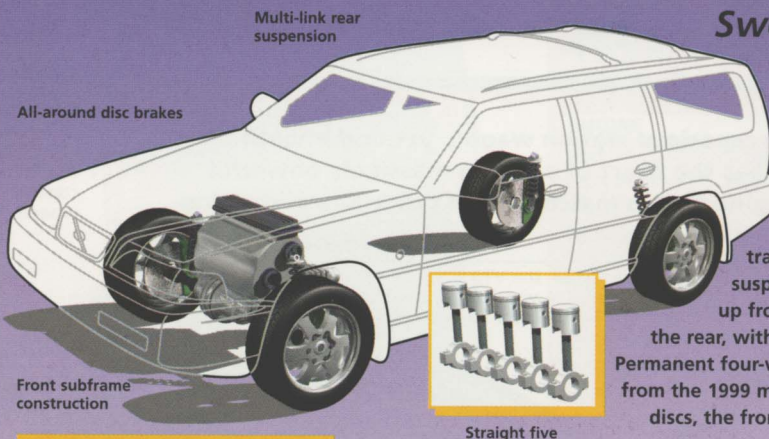


A sedan incarnation of the jolting T5 is also available.

1998 The R model gains

an extra 11 bhp, taking it up to 247 bhp. It is only available with permanent all-wheel drive as Volvo continues to tap into the increasingly popular sports sedan and touring market.

UNDER THE SKIN



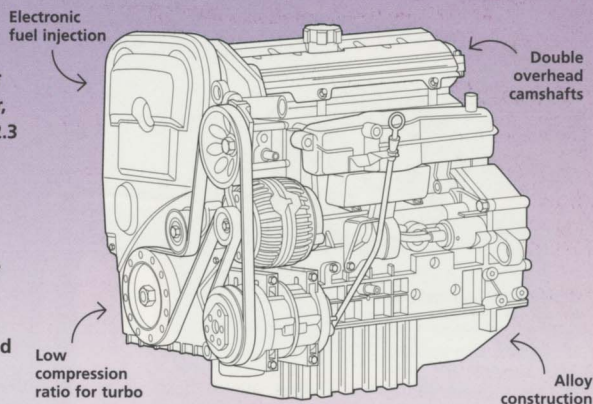
Swedish quality

The unitary body/chassis of the V70 is supplemented by a front subframe to isolate the major components, including the engine, transmission, steering and suspension. There are struts up front and multiple links at the rear, with coil springs all around. Permanent four-wheel drive is an option from the 1999 model year. Braking is by discs, the front pair being vented for cooling efficiency.

THE POWER PACK

Five-cylinder turbo

Volvo has mastered the inline five-cylinder layout better than any other manufacturer, and its 'R' engine is the proof. Displacing 2.3 liters, it developed 240 bhp in its original European form, but in 1998, it went up to 247 bhp (U.S. models have less bhp). Both the cylinder block and head are made of light alloy; the head incorporates a double overhead camshaft layout. The valve casting has a special blue 'R' logo to indicate its intention. The real secret behind the engine's ferocity is its turbocharger, permitting a high, 244-bhp output.



The R adds 11 bhp and four-wheel drive to the turbocharged T5 formula.

V70 R AWD

When Volvo launched its 'R' model, no one could believe that a car maker that was as heavily fixated on safety could produce something quite as fiery and potent as this. It transformed Volvo's image and began to attract enthusiasts to the marque.

NOSE TO NOSE

BMW 540i Touring • Mercedes C43 AMG • Volvo V70 R

TOP SPEED	0-60 mph	POWER	WEIGHT	RIVAL CARS
155 mph	6.2 sec.	286 bhp	3,902 lbs.	BMW 540i TOURING
155 mph	6.2 sec.	302 bhp	3,583 lbs.	MERCEDES C43 AMG
152 mph	6.9 sec.	236 bhp	3,371 lbs.	VOLVO V70 R

VALUE GUIDE

ORIGINAL PRICE

1998 \$34,510

CURRENT VALUE

\$30,000-\$33,000

PRODUCTION TOTAL

Still in production