



VOLVO
V40 CLASSIC PRICING

VOLVO
for life



THE VOLVO V40 CLASSIC

If you're looking for a compact, premium estate with classic styling then look no further. Generously equipped as standard and available in four different specification levels, the Volvo V40 has a wide range of petrol, diesel and LPG engine and transmission combinations – plus all the safety features you would expect from Volvo. Take a look through this price list to find the Volvo V40 that's right for you.

CHOOSE YOUR VOLVO	2-3
STANDARD EQUIPMENT	4
OPTIONS & ACCESSORIES	5
ACCESSORIES & UPHOLSTERY	6-7
TECHNICAL SPECIFICATION	8-9
CHOOSE YOUR COLOUR	10
CARE BY VOLVO	11

V40 CLASSIC S

The extensive standard specification includes leather upholstery, air-conditioning, remote central locking, 15" Solaris alloy wheels, electric windows, leather steering wheel and 6-speaker radio-cassette/CD player.

	Basic £	VAT £	Rec Retail Price £	On The Road Price £	On The Road Price € ⁽ⁱ⁾ Euros
PETROL					
V40 Classic 1.6 S	£12,200.00	£2,135.00	£14,335.00	£14,998.00	€21,492.13
V40 Classic 1.8 S	£13,051.06	£2,283.94	£15,335.00	£16,013.00	€22,946.63
DIESEL					
V40 Classic 1.9D (115 bhp) S	£14,285.11	£2,499.89	£16,785.00	£17,418.00	€24,959.99

V40 CLASSIC SPORT

The dynamic exterior of the V40 Classic Sport includes front and rear spoilers, gas discharge headlamps and 16" Gallactica alloy wheels whilst the interior benefits from Cyborg inlays, electronic climate control and a comprehensive information centre.

	Basic £	VAT £	Rec Retail Price £	On The Road Price £	On The Road Price € ⁽ⁱ⁾ Euros
PETROL					
V40 Classic 1.8 Sport	£13,646.81	£2,388.19	£16,035.00	£16,713.00	€23,949.73
V40 Classic 2.0 Sport	£14,208.51	£2,486.49	£16,695.00	£17,373.00	€24,895.51
DIESEL					
V40 Classic 1.9D (115 bhp) Sport	£14,880.85	£2,604.15	£17,485.00	£18,118.00	€25,963.09

V40 CLASSIC SE

The luxurious interior of the V40 Classic is enhanced further with the addition of an electrically adjustable driver's seat, electronic climate control, information centre, cruise control and Red Wood effect inlays whilst the exterior benefits from 16" Telesto alloys, body colour bumpers and door mouldings and chrome door handles.

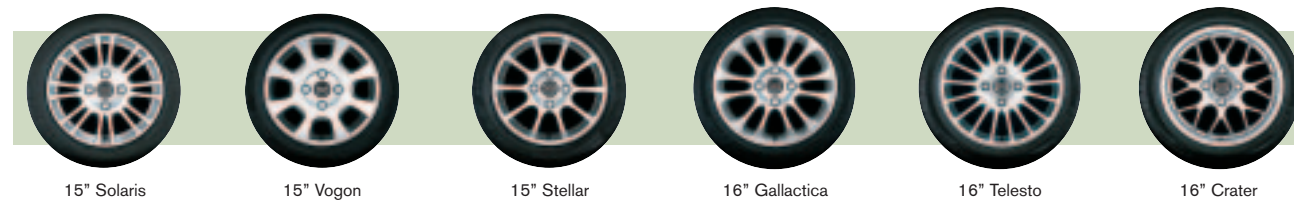
	Basic £	VAT £	Rec Retail Price £	On The Road Price £	On The Road Price € ⁽ⁱ⁾ Euros
PETROL					
V40 Classic 1.8 SE	£13,646.81	£2,388.19	£16,035.00	£16,713.00	€23,949.73
V40 Classic 2.0 SE	£14,208.51	£2,486.49	£16,695.00	£17,373.00	€24,895.51
DIESEL					
V40 Classic 1.9D (115 bhp) SE	£14,880.85	£2,604.15	£17,485.00	£18,118.00	€25,963.09



(i) Euro prices shown are calculated using an exchange rate of 1.433 Euros to the £, as published in the Financial Times on 1st September 2003. Euro prices will be subject to the prevailing exchange rate at the time of purchase. These figures are for information purposes only.

	S	SPORT	SE
SAFETY & SECURITY			
Dual Stage Driver and Passenger Airbags with Load Limiters on Seat Belts	•	•	•
SIPS (Side Impact Protection System)	•	•	•
SIPS Airbags	•	•	•
IC (Inflatable Curtain)	•	•	•
WHIPS (Whiplash Protection System) (Front Seats)	•	•	•
ABS (Anti-lock Brakes) with EBD (Electronic Brake Distribution)	•	•	•
5 Three Point Seat Belts	•	•	•
Seat Belt Pre-tensioners (Front)	•	•	•
Head Restraints – All 5 Seats	•	•	•
ISOFIX Child Seat Preparation (Outer Rear Seats)	•	•	•
Anti-theft Alarm and Immobiliser	•	•	•
Key Integrated Remote Control Central Locking including Fuel Flap with Deadlocking System	•	•	•
Ultrasonic Sensors for Anti-theft Alarm	•	•	•
Tinted Windows	•	•	•
Load Cover (Cargo Area) with Load Protection Net	•	•	•
Visible VIN Plate	•	•	•
Day Running Lights	•	•	•
Headlamp Levelling System	•	•	•
High Level LED Brake Light	•	•	•
Side Marker Bumper Illumination	•	•	•
Home Safe Lighting	•	•	•
INTERIOR			
Air Conditioning with Pollen Filter	•	•	•
ECC (Electronic Climate Control) with Multifilter	•	•	•
Exterior Temperature Gauge	•	•	•
Information Centre	•	•	•
Cruise Control	•	•	•
Front and Rear Electric Windows	•	•	•
Electrically Adjustable and Heated Door Mirrors	•	•	•
Passenger Vanity Mirror	•	•	•
Illuminated Driver and Passenger Vanity Mirrors	•	•	•
Front and Rear Reading Lamps	•	•	•
Rear Centre Armrest with Twin Cupholders	•	•	•
Twin Storage Pockets on Front Seat Backs	•	•	•
Coinholder and 12v Socket	•	•	•
Electric Driver's Seat (No Memory)	•	•	•
Height Adjustable Driver and Passenger Seats	•	•	•
Forward Folding Front Passenger Seat	•	•	•
Ergonomically-designed Front Seats with Adjustable Lumbar Support	•	•	•
Asymmetric Split-folding Rear Seat (30%/70%)	•	•	•
Front Centre Armrest with Sliding Cover over Tunnel Console	•	•	•
Leather Steering Wheel	•	•	•
Height Adjustable Steering Column	•	•	•
Leather Gear Knob (not 1.6) and Handbrake Lever	•	•	•
Cyborg Inlays	•	•	•
Red Wood Effect Inlays	•	•	•
Leather-faced Upholstery	•	•	•
HU-655 RDS Single Slot CD Radio Cassette with 6 Speakers and 4 x 25W Amplifier	•	•	•
Upgraded Speaker System	•	•	•
EXTERIOR			
15" Solaris Alloy Wheels – 195/60 VR15 Tyres	•	•	•
16" Gallactica Alloy Wheels – 205/50 ZR16 Tyres	•	•	•
16" Telesto Alloy Wheels – 205/50 ZR16 Tyres	•	•	•
Locking Wheel Nuts	•	•	•
125/90 Temporary Spare Wheel	•	•	•
Double Headlamps	•	•	•
Gas Discharge Headlamps and Headlamp Wash/Wipe	•	•	•
Front Fog Lights	•	•	•
Speed Dependent Interval Wiper Function	•	•	•
Rear Wash/Wipe with Intermittent Function	•	•	•
Roof Mounted Aerial	•	•	•
Roof Rails	nco	nco	nco
Comfort Chassis	•	•	•
Colour Co-ordinated Bumpers and Door Mirrors	•	•	•
Protective Side Mouldings	•	•	•
Body Colour Protective Side Mouldings and Bumper Inlays	•	•	•
Chrome Grille Surround and Boot Release Button	•	•	•
Chrome Door Handles and Boot Strip	•	•	•
Front and Rear Colour Co-ordinated Spoilers	•	•	•

	Basic £	VAT £	Rec Retail Price £	Rec Retail Price € ⁽ⁱ⁾	S	SPORT	SE
SAFETY & SECURITY							
Delete Passenger Airbag	-	-	-	-	nco	nco	nco
DSA (Dynamic Stability Assistance) (not 1.9D)	£306.38	£53.62	£360.00	€515.88	o	o	o
INTERIOR							
Automatic Transmission (not 1.6 or 1.9D)	£936.17	£163.83	£1,100.00	€1,576.30	o	o	o
Electric Glass Tilt and Slide Sunroof	£595.74	£104.26	£700.00	€1,003.10	o	o	o
Cyborg Inlays	-	-	-	-	n/a	•	nco
Visby Woven/Leather Upholstery	-	-	-	-	nco	nco	n/a
HU-1205 Navigation System with CD Radio and UK Disc Map	£765.96	£134.04	£900.00	€1,289.70	o	o	o
Hands-free Phone System ⁽ⁱⁱ⁾	£200.00	£35.00	£235.00	€336.76	o	o	o
EXTERIOR							
Metallic Paint	£425.53	£74.47	£500.00	€716.50	o	o	o
15" Vagon Alloy Wheels – 195/60 VR15 Tyres	-	-	-	-	nco	n/a	nco
15" Stellar Alloy Wheels – 195/60 VR15 Tyres	-	-	-	-	nco	n/a	nco
16" Telesto Alloy Wheels – 205/50 ZR16 Tyres	£110.64	£19.36	£130.00	€186.29	o	nco	•
16" Crater Alloy Wheels – 205/50 ZR16 Tyres	£170.21	£29.79	£200.00	€286.60	o	u (£70)	u (£70)
Gas Discharge Headlamps and Headlamp Wash/Wipe	£553.19	£96.81	£650.00	€931.45	o	•	o
Towbar – Fixed Type with 7 Pin Electrics ⁽ⁱⁱ⁾	£223.96	£39.19	£263.15	€377.09	o	o	o
Towbar – Fixed Type with 13 Pin Electrics ⁽ⁱⁱ⁾	£261.13	£45.70	£306.83	€439.69	o	o	o
Towbar – Detachable Type with 7 Pin Electrics ⁽ⁱⁱ⁾	£279.39	£48.89	£328.28	€470.43	o	o	o
Towbar – Detachable Type with 13 Pin Electrics ⁽ⁱⁱ⁾	£336.98	£58.97	£395.95	€567.40	o	o	o
Towbar – Flange Type with 7 Pin Electrics ⁽ⁱⁱ⁾	£243.64	£42.64	£286.28	€410.24	o	o	o
Towbar – Flange Type with 13 Pin Electrics ⁽ⁱⁱ⁾	£280.81	£49.14	£329.95	€472.82	o	o	o
Park Assist, Rear ⁽ⁱⁱ⁾	£305.81	£53.52	£359.33	€514.92	o	o	o



	Basic £	VAT £	Rec Retail Price £	Rec Retail Price € ⁽ⁱ⁾	S	SPORT	SE
WINTER PACK							
Headlamp Wash/Wipe	-	-	-	-	o	n/a	o
Heated Front Seats	£238.30	£41.70	£280.00	€401.24	o	n/a	o
Luxury Floor Mats	-	-	-	-	o	n/a	o
Heated Front Seats	£170.21	£29.79	£200.00	€286.60	n/a	o	n/a
Luxury Floor Mats	-	-	-	-	n/a	o	n/a

	Basic £	VAT £	Rec Retail Price £	Rec Retail Price € ⁽ⁱ⁾	S	SPORT	SE
FAMILY PACK							
Power Child Locks	-	-	-	-	o	o	o
Integrated Booster Cushions (x2)	£255.32	£44.68	£300.00	€429.90	o	o	o
Lateral Headrest Supports (x2)	-	-	-	-	o	o	o

• = standard, o = option, n/a = not available, nco = no cost option, u (£) = upgrade.

(i) Euro prices shown are calculated using an exchange rate of 1.433 Euros to the £, as published in the Financial Times on 1st September 2003.

Euro prices will be subject to the prevailing exchange rate at the time of purchase. These figures are for information purposes only.

(ii) Indicates total fitted price post registration. At participating dealers only. To find out who is a participating dealer contact the Volvo Helpline number on 0800 400 430.

ACCESSORIES	Basic £	VAT £	Rec Retail Price £	Rec Retail Price € ⁽ⁱ⁾
EXTERIOR ACCESSORIES (PRICES EXCLUDE FITTING UNLESS SHOWN OTHERWISE)				
Bike Rack (down tube clamp)	£51.06	£8.94	£60.00	€85.97
Bike Rack (servo lift)	£80.85	£14.15	£95.00	€136.13
Bumper Protector	£42.55	£7.45	£50.00	€71.64
Load Basket	£85.11	£14.89	£100.00	€143.31
Load Carrier Oval Profile	£76.60	£13.40	£90.00	€128.98
Mud Flaps (front)	£21.28	£3.72	£25.00	€35.83
Mud Flaps (rear)	£21.28	£3.72	£25.00	€35.83
Roof Protection Ribs	£66.38	£11.62	£78.00	€111.77
Roofbox – Sport Time 50 (310 litre volume)	£187.23	£32.77	£220.00	€315.25
Roofbox – Weekender (370 litre volume)	£212.77	£37.23	£250.00	€358.26
Roofbox – Dynamic 65 (405 litre volume)	£229.79	£40.21	£270.00	€386.91
Roofbox – Sport Time 20 (450 litre volume)	£263.83	£46.17	£310.00	€444.23
Roofbox – Dynamic 85 (510 litre volume)	£297.87	£52.13	£350.00	€501.55
Ski/Snowboard Carrier with Slide Rail	£59.58	£10.42	£70.00	€100.31
Snow Chain – standard version (variety available)	£119.15	£20.85	£140.00	€200.62
INTERIOR ACCESSORIES				
Cooler/Hot Box (excludes price for power cable)	£68.09	£11.92	£80.00	€114.64
Cargo Area Divider ⁽ⁱⁱ⁾	£42.55	£7.45	£50.00	€71.64
Fire Extinguisher (excludes installation kit)	£21.28	£3.72	£25.00	€35.83
First Aid Kit	£17.02	£2.98	£20.00	€28.66
Load Liner – form moulded plastic	£63.83	£11.17	£75.00	€107.48
Load Securing Net (cargo area)	£59.58	£10.43	£70.00	€100.31
Padded Neck Cushion	£17.02	£2.98	£20.00	€28.66
PC Table for Laptop Computers	£59.58	£10.43	£70.00	€100.32
Rubber Floor Mats (set of four)	£63.83	£11.17	£75.00	€107.48
Steel Safety Grille (for behind second row of seats)	£119.15	£20.85	£140.00	€200.62
CHILD SEATS				
Child Booster Cushion	£29.79	£5.21	£35.00	€50.16
Child Booster Backrest (to go with above)	£29.79	£5.21	£35.00	€50.16
Padded Upholstery – for booster seat and headrest	£51.06	£8.94	£60.00	€85.97

(i) The Euro prices shown in this price list are calculated using an exchange rate of 1.433 Euros to the £, the exchange rate published in the Financial Times as at 1st September 2003. Euro prices will be subject to the prevailing exchange rate at the time of purchase. These figures are for information purposes only.

(ii) Must be installed with Steel Safety Grille (additional cost).

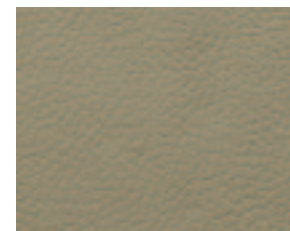
For further information and a complete list of all Volvo Accessories, just take a look at the new Accessory website at www.volvocars.co.uk/accessories



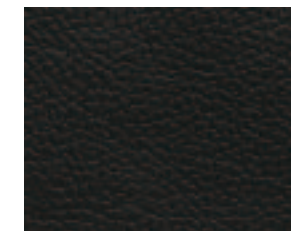
UPHOLSTERY	Code	Upholstery/Door Insert Colour	Door Panel/Dashboard Colour	Door Insert Material	Headliner Colour
Leather-faced	7970	Off Black	Off Black	Leather	Light Grey
	7990	Arena	Oak	Leather	Arena
Visby Woven/Leather	7371	Off Black	Off Black	Woven Cloth	Light Grey
	7391	Arena	Oak	Woven Cloth	Arena

UPHOLSTERY

LEATHER-FACED

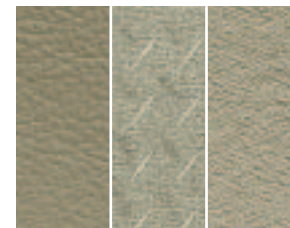


Arena (7990)



Off Black (7970)

VISBY WOVEN/LEATHER

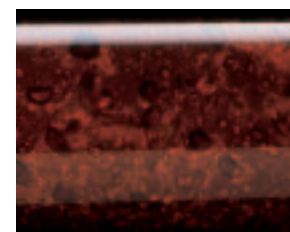


Arena (7391)



Off Black (7371)

INTERIOR INLAYS



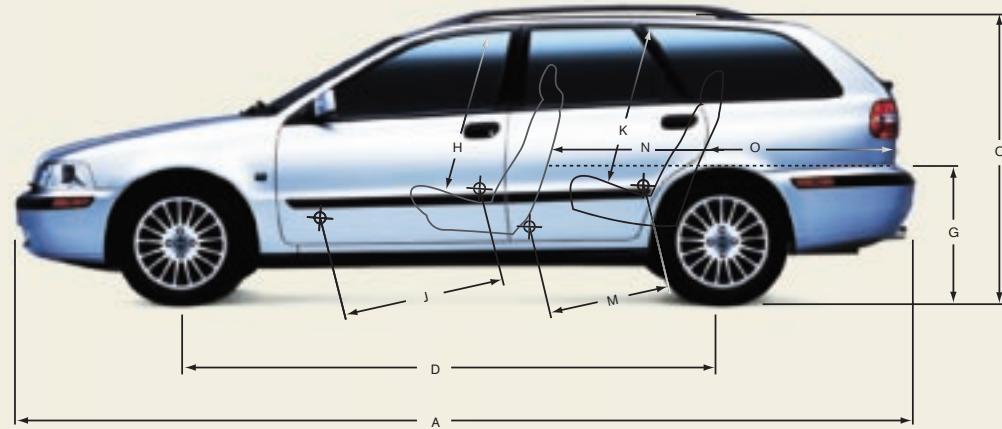
Red Wood effect



Cyborg

NB It is not possible to reproduce exact original shades in printed matter.

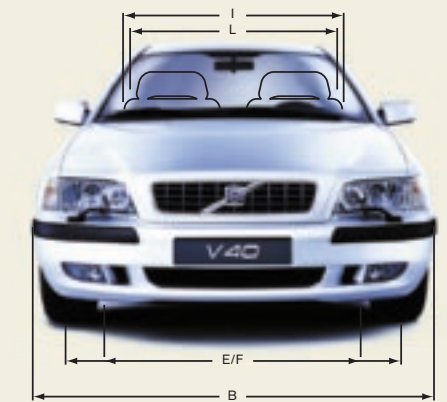
ENGINE		1.6	1.8	2.0	1.9D
Configuration		Transverse 16 valve	Transverse 16 valve	Transverse 16 valve	Transverse 16 valve
Cylinders		4	4	4	4
Engine capacity, cc		1587	1783	1948	1870
Bore & stroke, mm		81 x 77	83 x 82.4	83 x 90	80 x 93
Max. output ECE	bhp	109	122	136	115
	kw	80	90	100	85
	rpm	5800	5800	5800	4000
Max. torque ECE	Nm	145	170	190	265
	rpm	4000	4000	4000	1750-2500
Octane rating		95 RON unleaded (min. 91)	95 RON unleaded (min. 91)	95 RON unleaded (min. 91)	N/A diesel
Fuel system		Multipoint fuel injection	Multipoint fuel injection	Multipoint fuel injection	Multipoint direct fuel injection
Compression ratio		10.0:1	10.3:1	10.5:1	19.0:1



INSURANCE GROUPS	1.6	1.8	2.0	1.9D
Volvo V40	8	10	12	11

WEIGHTS	1.6	1.8	2.0	1.9D
Max. total weight, kg	1800	1800	1800	1800
Min. kerb weight, kg (actual kerb weight dependent on spec)	1280	1280	1280	1280
Max. payload, kg (dependent on spec)	520	520	520	520
Max. towing weight unbraked approx, kg ^(iv)	665	665	665	665
Max. possible towing weight braked, kg	1200	1200	1400	1400
Max. roof load, kg	100	100	100	100

EXTERIOR (mm)		INTERIOR (mm)	
A Overall length	4516	H Front seat max. headroom ⁽ⁱⁱ⁾	982
B Overall width (exc. wing mirrors)	1716	I Front seats width	1371
C Unladen height	1425	J Front seat max. legroom	1052
D Wheelbase length	2562	K Rear seat max. headroom ⁽ⁱⁱ⁾	972
E Front track width	1472	L Rear seats width	1374
F Rear track width	1474	M Rear seat max. legroom	831
G Ground to boot base height	518	N Load length luggage 2 seat mode	1751
		O Load length luggage 5 seat mode	1018



PERFORMANCE		1.6	1.8	2.0	1.9D
Top speed (mph)	Man	118	124	127	121
	Auto	-	121	124	-
Acceleration 0-62mph (sec)	Man	12.0	10.5	9.7	10.5
	Auto	-	11.5	10.7	-

BRAKES	All models
Full load stopping distance 62-0 mph, m (ft)	42 (138)
Full load stopping distance 62-0 mph, secs	3.2
Disc diameter mm, front	256 Ventilated
Disc diameter mm, rear	260

TRANSMISSION	All models
Manual	5
Automatic	5

FUEL CONSUMPTION ⁽ⁱ⁾		1.6	1.8	2.0	1.9D
Urban	Man mpg (l/100km)	26.6 (10.6)	25.7 (11.0)	24.6 (11.5)	38.2 (7.4)
	Auto mpg (l/100km)	-	22.6 (12.5)	22.1 (12.8)	-
Extra urban	Man mpg (l/100km)	47.1 (6.0)	47.1 (6.0)	46.3 (6.1)	65.7 (4.3)
	Auto mpg (l/100km)	-	43.5 (6.5)	42.8 (6.6)	-
Combined	Man mpg (l/100km)	36.7 (7.7)	36.2 (7.8)	34.9 (8.1)	52.3 (5.4)
	Auto mpg (l/100km)	-	32.5 (8.7)	31.7 (8.9)	-
CO ₂ g/km	Man	184	187	194	142
	Auto	-	208	213	-
VED Band (Vehicle Excise Duty)	Man	C	D	D	A
	Auto	-	D	D	-

LUGGAGE COMPARTMENT	All models
Volume, litres (cu. ft)	413 (14.6) (DIN)
Volume, rear seats down, litres (cu. ft)	751 (26.5) (DIN)
Volume, rear seats down, litres (cu. ft) to roof	1421 (50.2) (DIN)

DIN = Official measurement determined by loading 1 litre boxes into luggage compartment.

PERFORMANCE	All models
Drag co-efficient	0.31

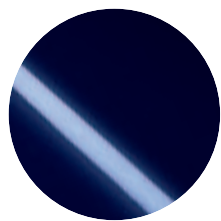
FUEL TANK	All models
Volume, litres (gallons)	60 (13.2)

POWER STEERING SYSTEM	All models
(rack & pinion) Turning circle, m (ft) 195-225 section tyres	15/16" 10.6 (34.8)

Notes

- (i) The Urban fuel consumption figure is based on typical city driving, including starting the car from cold. The Extra Urban figure is based on typical motorway driving and cruising. The Combined figure averages the consumption across both cycles.
- (ii) These results do not express or imply any guarantee of the fuel consumption of a particular car as there are inevitable differences between individual cars of the same model. Additionally driving style, traffic conditions, as well as the age and mileage and standard of maintenance will affect a car's fuel consumption.
- (iii) Figure quoted without sunroof.
- (iv) Unbraked towing weight must not exceed 50% of kerb weight up to a maximum of 750 kg.

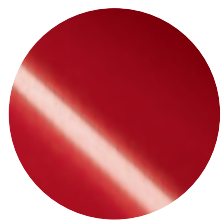
Some specifications may have lower CO₂ emissions than those shown. Once a vehicle has been built it will be given its own specific CO₂ emission figure on which Vehicle Excise Duty and company car tax, where appropriate, will be calculated. Please contact your dealer for details.
A weighbridge must be used to determine specific weights. Data valid for manual transmission unless specified.
NB Some of the information in this price list may not be correct due to product changes which may have occurred since it was printed. Some of the equipment described or shown may now be available only at extra cost. Before ordering, please ask your Volvo dealer for the latest information. The manufacturer reserves the right to make changes at any time, without notice, to prices, colour, materials, specifications and models.
Volvo Car UK Limited, Globe Park, Marlow, Buckinghamshire, SL7 1YQ



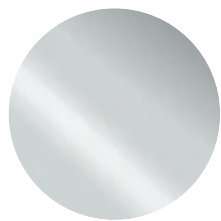
243
Dark Blue



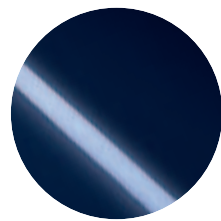
249
White



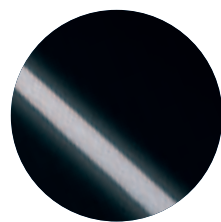
250
Red



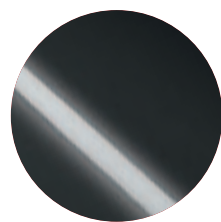
329
Pure Silver metallic



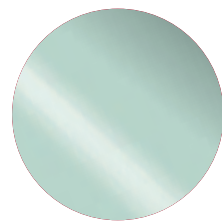
343
Atlantic Blue metallic



346
Black Sapphire metallic



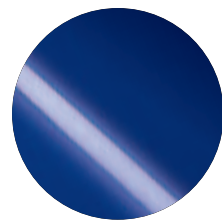
347
Titanium Grey metallic



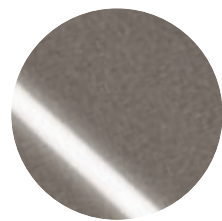
352
Silver Green metallic



353
Cherry Red metallic



354
Virtual Blue metallic



357
Terra Grey metallic



Care by Volvo is a range of tailored benefits, facilities and services to make sure you get the maximum enjoyment from your Volvo.

FINANCE

CARE BY VOLVO

We make finance simple, clear and attractive. For private motorists, our flexible purchase schemes like Volvo Advantage make ownership affordable, with low monthly payments and low minimum deposit⁽ⁱ⁾. For business users, Volvo purchase plans, leasing and contract hire facilities offer tax efficient, versatile finance alternatives.

ASSISTANCE

CARE BY VOLVO

Every new car comes with one year's free RAC cover. You'll enjoy full breakdown and recovery assistance, anywhere in Europe, 24 hours a day. You can even extend cover for up to two more years at preferential rates.

OWNERS INSURANCE

CARE BY VOLVO

Statistics show Volvo drivers have fewer accidents. That means Volvo Owners insurance can offer competitive premiums with tailored protection and exclusive benefits. Operated in conjunction with The Royal and SunAlliance, one telephone call even deals with all arrangements for any claim. Contact your local Volvo Dealer or call direct on 0800 238 239 to obtain a no obligation quote⁽ⁱⁱ⁾.

WARRANTY

CARE BY VOLVO

Every new Volvo comes with comprehensive protection. Our warranty covers the first three years or 60,000 miles, whichever comes first. There's a three year unlimited warranty on the paintwork, and a full 8 years against rust perforation. If a component fails due to a defect or material fault, your dealer will swiftly rectify the problem, free of charge.

All 'On The Road' prices quoted in this price list include Volvo standard national delivery charge, inclusive of number plates, at £480 and the VED (Vehicle Excise Duty) car tax effective from 1st March 2000. The 'On The Road' price also includes a £38 vehicle first registration fee (as set by the government), effective since 1st April 1998 (excludes Channel Islands and Isle of Man). Retail prices quoted do not include these additions.

Details

The above is just an outline of the facilities available to Volvo Owners. For full details, contact your dealer, or visit www.volvocars.co.uk.

For tax free sales, including Military, Diplomat and all other Export enquiries, contact Volvo Car UK Tourist & Diplomat Sales or Volvo Car UK British Military Sales on 01707 262388 or e-mail to vcuktds@volvocars.com or bms@volvocars.com

(i) Subject to status. Written quotations are available from Volvo Car Finance Limited, Globe Park, Marlow, Buckinghamshire SL7 1YQ.
(ii) Calls will be recorded and may be monitored.

VOLVO

Volvo Car UK Limited
www.volvocars.co.uk