



VOLVO  
**S60** PRICING

**VOLVO**  
for life



# THE VOLVO S60

If you've been searching for a stylish, sporty machine then look no further – the Volvo S60 is the definitive sports saloon. Blessed with perfectly sculpted body work and a luxurious interior, it certainly looks the part. But it's under the bonnet where it really excels – take a look through this price list to find out about the S60's jaw dropping performance.

## T5

The T5 2.3 litre, turbocharged, in-line, 5 cylinder engine delivers outstanding performance – producing 250 bhp and 330 Nm torque. This extremely smooth engine features variable valve timing on the exhaust side and a responsive turbocharger designed to deliver maximum torque from low and medium engine speeds. Effortless performance is combined with excellent fuel consumption and CO<sub>2</sub> emissions.

## D5

The D5 2.4 litre, turbocharged, in-line, 5 cylinder, common rail diesel engine delivers very low fuel consumption and CO<sub>2</sub> emissions with excellent performance – producing 163 bhp and 340 Nm torque. This extremely advanced diesel engine is made entirely of aluminium giving it a similar weight to a petrol engine. This advanced design combined with second generation electronic common rail fuel injection and the variable blade turbocharger makes it one of the quietest and most advanced diesel engines available on the market.

## BI-FUEL

As part of Volvo's total commitment to the environment, the S60 Bi-Fuel engines enable you to benefit from the lower cost of LPG/CNG and reduce harmful emissions to the atmosphere.

**CHOOSE YOUR VOLVO** 2-3

**STANDARD AND OPTIONAL EQUIPMENT** 4-5

**ACCESSORIES & UPHOLSTERY** 6-7

**TECHNICAL SPECIFICATION** 8-9

**CHOOSE YOUR COLOUR** 10

**CARE BY VOLVO** 11

## S60 S

The comprehensive standard specification includes electronic climate control, 16" Mimas alloy wheels, CD player and 6 speakers, STC (Stability and Traction Control), leather steering wheel plus all the safety features you would expect from Volvo.

	Basic £	VAT £	Rec Retail Price £	On The Road Price £	On The Road Price € <sup>(i)</sup> Euros
<b>PETROL</b>					
2.0T S	£16,451.06	£2,878.94	£19,330.00	£19,995.00	€30,752.31
2.5T S	£18,297.87	£3,202.13	£21,500.00	£22,165.00	€34,089.77
<b>DIESEL</b>					
D5 S	£17,208.51	£3,011.49	£20,220.00	£20,880.00	€32,113.44
<b>BI-FUEL</b>					
2.4 Bi-Fuel (LPG <sup>(iii)</sup> ) S	£17,148.94	£3,001.06	£20,150.00	£19,686.60 <sup>(iv)</sup>	€30,277.99
2.4 Bi-Fuel (CNG <sup>(iv)</sup> ) S	£17,834.04	£3,120.96	£20,955.00	£20,043.09 <sup>(iv)</sup>	€30,826.27

## S60 SE

The SE model offers electric driver's seat, Leather-faced Sports upholstery, 17" Tethys alloy wheels, 4 x CD player with Dolby Pro Logic Surround Sound™<sup>(ii)</sup> and 9 speakers.

	Basic £	VAT £	Rec Retail Price £	On The Road Price £	On The Road Price € <sup>(i)</sup> Euros
<b>PETROL</b>					
2.0T SE	£18,323.40	£3,206.60	£21,530.00	£22,195.00	€34,135.91
2.5T SE	£19,872.34	£3,477.66	£23,350.00	£24,015.00	€36,935.07
T5 SE	£21,817.02	£3,817.98	£25,635.00	£26,300.00	€40,449.40
<b>DIESEL</b>					
D5 SE	£19,080.85	£3,339.15	£22,420.00	£23,080.00	€35,497.04
<b>BI-FUEL</b>					
2.4 Bi-Fuel (LPG <sup>(iii)</sup> ) SE	£18,808.51	£3,291.49	£22,100.00	£21,636.60 <sup>(iv)</sup>	€33,277.09
2.4 Bi-Fuel (CNG <sup>(iv)</sup> ) SE	£19,493.62	£3,411.38	£22,905.00	£21,993.09 <sup>(iv)</sup>	€33,825.37



(i) Euro prices shown are for information only and are calculated using an exchange rate of 1.538 Euros to the £, as published in the Financial Times on 6th January 2003. Euro prices will be subject to the prevailing exchange rate at the time of purchase. These figures are for information purposes only.

(ii) Dolby and Pro Logic Surround Sound™ are trademarks of Dolby Laboratories Licensing Corporation.

(iii) Liquefied Petroleum Gas.

(iv) Compressed Natural Gas.

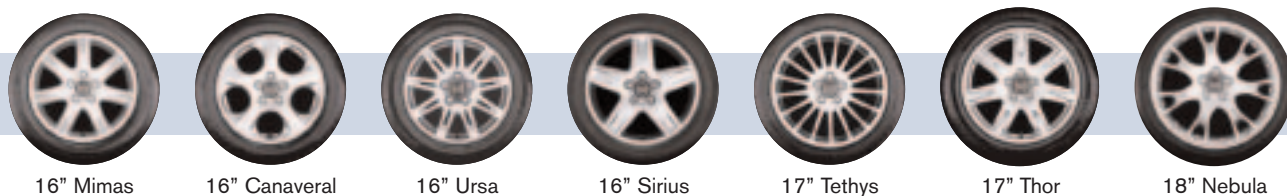
(v) The 'On The Road' price includes a subsidy of £1,123.40 on LPG and £1,531.91 on CNG taking fully into account any PowerShift grants available. Conditions apply – please see dealer for details.



ACCESSORIES	Basic £	VAT £	Rec Retail Price £	Rec Retail Price € <sup>(i)</sup>
<b>EXTERIOR ACCESSORIES (PRICES EXCLUDE FITTING UNLESS SHOWN OTHERWISE)</b>				
Bike Rack (down tube clamp)	£51.06	£8.94	£60.00	€92.27
Bike Rack (servo lift)	£80.85	£14.15	£95.00	€146.11
Bumper Protector	£42.55	£7.45	£50.00	€76.89
Load Basket	£85.11	£14.89	£100.00	€153.81
Load Carrier	£68.09	£11.92	£80.00	€123.05
Mud Flaps (front)	£21.28	£3.72	£25.00	€38.46
Mud Flaps (rear)	£21.28	£3.72	£25.00	€38.46
Roofbox – Sport Time 50 (310 litre volume)	£187.23	£32.77	£220.00	€338.35
Roofbox – Weekender (370 litre volume)	£212.77	£37.23	£250.00	€384.51
Roofbox – Dynamic 65 (405 litre volume)	£229.79	£40.21	£270.00	€415.26
Roofbox – Sport Time 20 (450 litre volume)	£263.83	£46.17	£310.00	€476.78
Roofbox – Dynamic 85 (510 litre volume)	£297.87	£52.13	£350.00	€538.30
Ski/Snowboard Carrier with Slide Rail	£59.58	£10.42	£70.00	€107.66
Snow Chain – standard version (variety available)	£119.15	£20.85	£140.00	€215.32
<b>INTERIOR ACCESSORIES</b>				
Boot mat – rubber	£72.34	£12.66	£85.00	€130.73
Boot mat – textile/rubber reversible	£76.60	£13.40	£90.00	€138.43
Cooler/Hot Box (excludes price for power cable)	£68.09	£11.92	£80.00	€123.05
Fire Extinguisher (excludes installation kit)	£21.28	£3.72	£25.00	€38.76
Load Securing Straps (cargo area)	£17.02	£2.98	£20.00	€30.76
Load Securing Net (cargo area)	£59.58	£10.43	£70.00	€107.66
Net Pocket (cargo area)	£25.53	£4.47	£30.00	€46.14
Padded Neck Cushion	£17.02	£2.98	£20.00	€30.76
PC Table for Laptop Computers	£59.58	£10.43	£70.00	€107.67
Rubber Floor Mats (set of four)	£63.83	£11.17	£75.00	€115.35
Steering Wheel – Wood Rim <sup>(ii)</sup>	£280.85	£49.15	£330.00	€507.54
Sunblind (rear window)	£51.06	£8.94	£60.00	€92.27
Sunblind (rear door windows – pair)	£51.06	£8.94	£60.00	€92.27
Table (rear centre armrest)	£17.02	£2.98	£20.00	€30.76
<b>CHILD ACCESSORIES</b>				
Child Booster Cushion	£29.79	£5.21	£35.00	€53.83
Child Booster Backrest (to go with above)	£29.79	£5.21	£35.00	€53.83
Padded Upholstery (for booster seat and headrest)	£51.06	£8.94	£60.00	€92.27

For further information and a complete list of all Volvo Accessories, just take a look at the new Accessory website at [www.volvocars.co.uk/accessories](http://www.volvocars.co.uk/accessories)

UPHOLSTERY	Upholstery Code	Upholstery Colour	Dashboard Top/ Door Panel Colour <sup>(iii)</sup>	Door Insert Colour	Headliner Colour
Svangen Textile/ Vinyl Sports	9270	Off Black	Off Black	Off Black	Granite
Berghamn Plush	9470	Off Black	Off Black	Off Black	Granite
	9480	Oak	Oak	Oak	Arena
Nidingen Textile/ Leather Sports	9351	Light Sand	Beige	Light Sand	Light Sand
	9370	Off Black	Off Black	Off Black	Granite
	9372	Off Black/Sisal	Off Black	Sisal	Arena
	9373	Off Black/Indigo	Off Black	Indigo	Granite
	9381	Arena	Oak	Arena	Arena
Leather-faced	9951	Light Sand	Beige	Light Sand	Light Sand
	9970	Off Black	Off Black	Off Black	Granite
	9972	Sisal	Off Black	Sisal	Arena
	9980	Oak	Oak	Oak	Arena
	9981	Arena	Oak	Arena	Arena
Leather-faced Sports	9A51	Light Sand	Beige	Light Sand	Light Sand
	9A70	Off Black	Off Black	Off Black	Granite
	9A72	Sisal	Off Black	Sisal	Arena
	9A80	Oak	Oak	Oak	Arena
	9A81	Arena	Oak	Arena	Arena



INTERIOR INLAYS



Walnut Wood Effect    Mesh Aluminium    Black Mesh

(i) Euro prices shown are for information only and are calculated using an exchange rate of 1.538 Euros to the £, as published in the Financial Times on 6th January 2003. Euro prices will be subject to the prevailing exchange rate at the time of purchase. These figures are for information purposes only.  
 (ii) Cannot be combined with RTI Navigation System.  
 (iii) Denotes the colour of the door panels above the Inlay Trim.

UPHOLSTERY

CLASSIC DESIGN SEATS	SPORTS DESIGN SEATS WITH EXTRA SCULPTING AND MORE SIDE SUPPORT
<p>BEIGE/LIGHT SAND</p> <p>Berghamn Plush<sup>(iv)</sup> Light Sand (9451)    Leather-faced Light Sand (9951)</p>	<p>BEIGE/LIGHT SAND</p> <p>Nidingen Textile/Leather Sports Light Sand (9351)    Leather-faced Sports Light Sand (9A51)</p>
<p>OAK/ARENA</p> <p>Berghamn Plush<sup>(iv)</sup> Oak (9480)    Leather-faced Oak (9980)</p>	<p>OAK/ARENA</p> <p>Svangen Textile/Vinyl Sports<sup>(v)</sup> Oak (9280)    Nidingen Textile/Leather Sports Arena (9381)</p>
<p>Leather-faced Arena (9981)</p> <p>Leather-faced Arena (9981)</p>	<p>Leather-faced Sports Oak (9A80) and Leather-faced Sports Arena (9A81) upholstery samples.</p> <p>Leather-faced Sports Oak (9A80)    Leather-faced Sports Arena (9A81)</p>
<p>OFF BLACK/SISAL/INDIGO</p> <p>Berghamn Plush<sup>(vi)</sup> Off Black (9470)    Leather-faced Off Black (9970)</p>	<p>OFF BLACK/SISAL/INDIGO</p> <p>Svangen Textile/Vinyl Sports<sup>(v)</sup> Off Black (9270)    Nidingen Textile/Leather Sports Off Black (9370)</p>
<p>Leather-faced Sisal (9972)</p> <p>Leather-faced Sisal (9972)</p>	<p>Nidingen Textile/Leather Sports Off Black/Indigo (9373) and Nidingen Textile/Leather Sports Off Black/Sisal (9372) upholstery samples.</p> <p>Nidingen Textile/Leather Sports Off Black/Indigo (9373)    Nidingen Textile/Leather Sports Off Black/Sisal (9372)</p>
	<p>Leather-faced Sports Off Black (9A70) and Leather-faced Sports Sisal (9A72) upholstery samples.</p> <p>Leather-faced Sports Off Black (9A70)    Leather-faced Sports Sisal (9A72)</p>

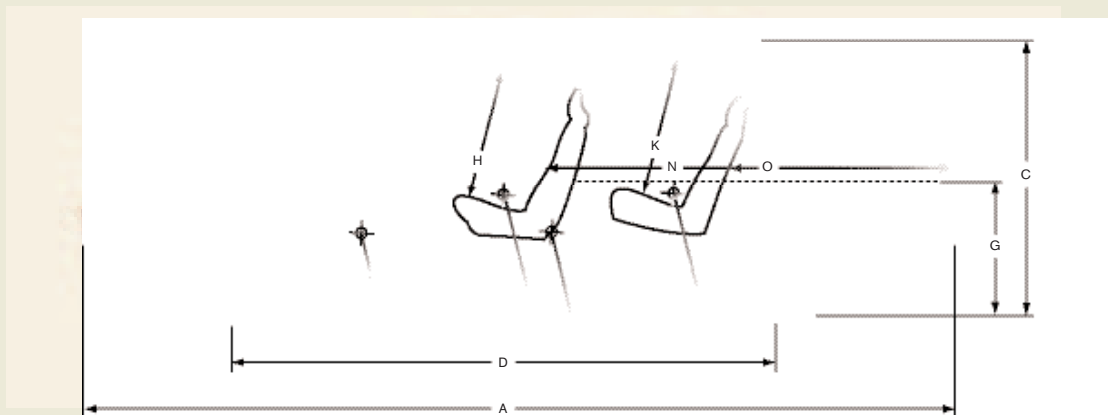
(iv) In combination with the Volvo Premium Sound loudspeaker system, the front door sides are trimmed in Light Sand vinyl.  
 (v) In combination with the Volvo Premium Sound loudspeaker system, the front door sides are trimmed in Oak vinyl.  
 (vi) In combination with the Volvo Premium Sound loudspeaker system, the front door sides are trimmed in Off Black vinyl.  
 NB It is not possible to reproduce exact original shades in printed matter.

ENGINE	2.0T		2.5T		D5		T5		2.4 Bi-Fuel (LPG <sup>(i)</sup> ) Petrol		2.4 Bi-Fuel (CNG <sup>(ii)</sup> ) Petrol	
	Transverse – 20 valve		Transverse – 20 valve		Transverse – 20 valve		Transverse – 20 valve		Transverse – 20 valve		Transverse – 20 valve	
Configuration	5		5		5		5		5		5	
Cylinders	1984		2521		2401		2319		2435		2435	
Engine capacity, cc	81 x 77		83 x 93		81 x 93		81 x 90		83 x 90		83 x 90	
Max. output ECE,	bhp	180	210	163	250	140	140	140	140	140	140	140
	kw	132	154	120	184	103	103	103	103	103	103	103
	rpm	5300	5000	4000	5200	5100	4500	5800	4500	5800	4500	4500
Max. torque ECE,	Nm	240	320	340	330	214/	220	192	220	220	220	220
	rpm	2200-5300	1500-4500	1750-3000	2400-5200	4500	3750	4500	3750	4500	3750	3750
Octane rating	95-98 <sup>(iii)</sup> RON unleaded		95-98 <sup>(iii)</sup> RON unleaded		Turbo Diesel		95-98 <sup>(iii)</sup> RON unleaded		LPG	95-98 <sup>(iii)</sup> RON unleaded	CNG	95-98 <sup>(iii)</sup> RON unleaded
Fuel system	Multipoint fuel injection		Multipoint fuel injection		Multipoint direct fuel injection		Multipoint fuel injection		Multipoint fuel injection		Multipoint fuel injection	
Compression ratio	9.5:1		9.0:1		18.0:1		8.5:1		10.3:1		10.3:1	

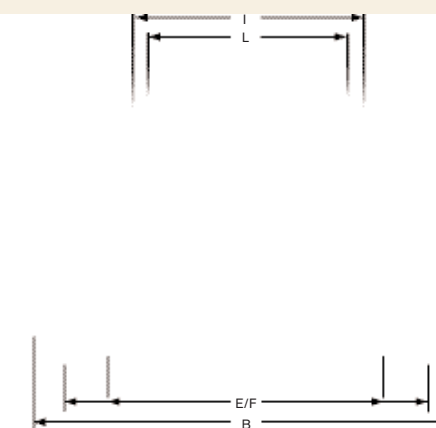
WEIGHTS	2.0T	2.5T	D5	T5	2.4 Bi-Fuel (LPG <sup>(i)</sup> )	2.4 Bi-Fuel (CNG <sup>(ii)</sup> )
Min. kerb weight, kg (actual kerb weight dependent on spec.)	1440	1440	1515	1440	1490	1509
Max. possible towing weight braked, kg	1600	1600	1600	1600	1600	1600
Max. towing weight unbraked approx. kg <sup>(vi)</sup>	750	750	750	750	750	750
Max. total weight, kg	2050	2050	2050	2050	2050	2050
Max. roof load, kg	100	100	100	100	100	100
Max. payload, kg (dependent on spec. of car)	610	610	535	610	560	541

TRANSMISSION <sup>(vii)</sup>	All models
Manual	5
Automatic/Geartronic	5

POWER STEERING SYSTEM	All models
(rack & pinion) Turning circle, m (ft) 195 – 225 section tyres	10.8 – 11.8 (35'4" – 38'7")



EXTERIOR (mm)	INTERIOR (mm)		
A Overall length	4576	H Front seat max. headroom <sup>(viii)</sup>	984
B Overall width (exc. wing mirrors)	1804	I Front seats width	1427
C Unladen height	1428	J Front seat max. legroom	1082
D Wheelbase length	2715	K Rear seat max. headroom <sup>(viii)</sup>	962
E Front track width	1561	L Rear seats width	1409
F Rear track width	1542	M Rear seat max. legroom	847
G Rear load height	661	N Load length luggage 2 seat mode	1727
		O Load length luggage 5 seat mode	1047



PERFORMANCE		2.0T	2.5T <sup>(vii)</sup>	D5 <sup>(vii)</sup>	T5 <sup>(vii)</sup>	2.4 Bi-Fuel LPG <sup>(i)</sup> Petrol		2.4 Bi-Fuel CNG <sup>(ii)</sup> Petrol	
Top speed, mph	Man	140	146	130	155	127	130	130	130
	Auto	134	143	130	152	124	127	127	127
Acceleration 0-62mph, sec	Man	8.8	7.0	9.5	6.8	10.3	10.2	10.7	10.2
	Auto	9.5	7.4	9.9	7.1	11.2	11.1	11.6	11.1

BRAKES	2.0T/2.5T/T5	D5/2.4 Bi-Fuel (LPG <sup>(i)</sup> /CNG <sup>(ii)</sup> )
Disc diameter mm, front	305 Ventilated	286 Ventilated
Disc diameter mm, rear	288	288

LUGGAGE COMPARTMENT	All models
Volume, litres (cu. ft.)	394 (13.9)
Volume, rear seats down, litres (cu.ft.)	808 (28.5)

FUEL CONSUMPTION <sup>(iii, iv)</sup>		2.0T	2.5T <sup>(vii)</sup>	D5 <sup>(vii)</sup>	T5 <sup>(vii)</sup>	2.4 Bi-Fuel LPG <sup>(i)</sup> Petrol		2.4 Bi-Fuel CNG <sup>(ii)</sup> Petrol	
Urban	Man mpg (l/100km)	22.1 (12.8)	21.9 (12.9)	32.5 (8.7)	22.2 (12.7)	18.1 (15.6)	22.4 (12.6)	21.9 (12.9)	23.5 (12.0)
	Auto mpg (l/100km)	19.5 (14.5)	19.9 (14.2)	26.4 (10.7)	19.5 (14.5)	15.3 (18.5)	20.2 (14.0)	19.6 (14.4)	19.9 (14.2)
Extra Urban	Man mpg (l/100km)	39.8 (7.1)	40.4 (7.0)	54.3 (5.2)	38.7 (7.3)	31.0 (9.1)	39.8 (7.1)	42.2 (6.7)	40.9 (6.9)
	Auto mpg (l/100km)	37.2 (7.6)	38.2 (7.4)	48.7 (5.8)	37.7 (7.5)	29.4 (9.6)	39.8 (7.1)	38.2 (7.4)	40.4 (7.0)
Combined	Man mpg (l/100km)	30.7 (9.2)	30.7 (9.2)	43.5 (6.5)	30.4 (9.3)	24.6 (11.5)	31.0 (9.1)	31.4 (9.0)	32.1 (8.8)
	Auto mpg (l/100km)	28.0 (10.1)	28.5 (9.9)	37.2 (7.6)	27.7 (10.2)	21.9 (12.9)	29.4 (9.6)	28.2 (10.0)	29.4 (9.6)
CO <sub>2</sub> g/km	Man	218	220	171	222	186	217	161	211
	Auto	240	236	201	240	209	231	178	231
VED (Vehicle Excise Duty) Band	Man	D	D	C	D	D	D	B	D
	Auto	D	D	D	D	D	D	C	D

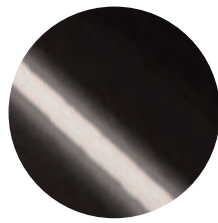
PERFORMANCE	All models
Drag co-efficient	0.28

FUEL TANK	Non Bi-Fuel models	S60 2.4 Bi-Fuel (LPG <sup>(i)</sup> )	S60 2.4 Bi-Fuel (CNG <sup>(ii)</sup> )
Volume, litres (gallons)	70 (15.4)	50 (11.0) LPG	23 Nm <sup>3</sup> (Slow Fill) CNG
		29 (6.4) Petrol	29 (6.4) Petrol

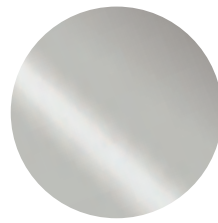
- (i) Liquefied Petroleum Gas.
- (ii) Compressed Natural Gas.
- (iii) These results do not express or imply any guarantee of the fuel consumption of a particular car as there are inevitable differences between individual cars of the same model. Additionally driving style, traffic conditions, as well as the age and mileage and standard of maintenance will affect a car's fuel consumption.
- (iv) The Urban fuel consumption figure is based on typical city driving, including starting the car from cold. The Extra Urban figure is based on typical motorway driving and cruising. The Combined figure averages the consumption across both cycles.
- (v) For best performance and lowest fuel consumption 98 RON is recommended. 95 RON can be used for normal driving.
- (vi) Unbraked towing weight must not exceed 50% of kerb weight up to a maximum of 750 kg.
- (vii) 2.5T, D5 + T5 available in 5-speed Manual or 5-speed Geartronic.
- (viii) Figure quoted without sunroof.

**Notes**

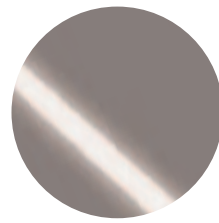
Some specifications may have lower CO<sub>2</sub> emissions than those shown. Once a vehicle has been built it will be given its own specific CO<sub>2</sub> emission figure on which Vehicle Excise Duty and company car tax, where appropriate, will be calculated. Please contact your dealer for details. A weighbridge must be used to determine specific weights. Data valid for manual transmission unless specified. All measurements in mm. NB Some of the information in this price list may not be correct due to product changes which may have occurred since it was printed. Some of the equipment described or shown may now be available at extra cost. Before ordering, please ask your Volvo dealer for the latest information. The manufacturer reserves the right to make changes at any time, without notice, to price, colour, materials, specifications and models. Volvo Car UK Limited, Globe Park, Marlow, Buckinghamshire, SL7 1YQ



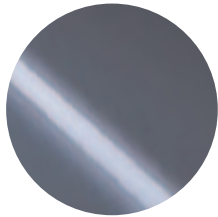
**019**  
Black Stone



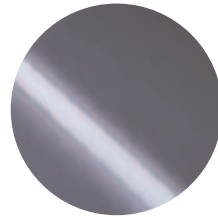
**449**  
Mistral Green metallic



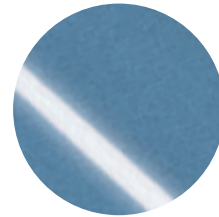
**455**  
Titanium Grey pearl



**417**  
Nautic Blue pearl



**450**  
Cosmos Blue metallic



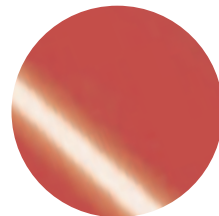
**459**  
Dawn Blue pearl



**426**  
Silver metallic



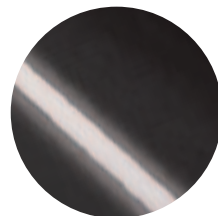
**451**  
Maya Yellow pearl



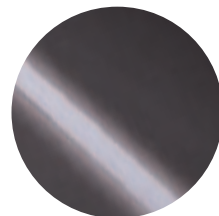
**612**  
Passion Red



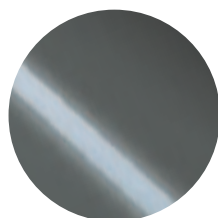
**446**  
Ash Gold pearl



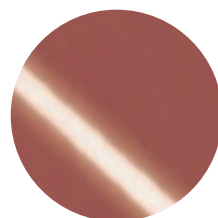
**452**  
Black Sapphire metallic



**613**  
Deep Blue



**447**  
Scarab Green pearl



**454**  
Ruby Red pearl



**614**  
Ice White

Care by Volvo is a range of tailored benefits, facilities and services to make sure you get the maximum enjoyment from your Volvo.



## FINANCE

We make finance simple, clear and attractive. For private motorists, our flexible purchase schemes like Volvo Advantage make ownership affordable, with low monthly payments and low minimum deposit<sup>(i)</sup>. For business users, Volvo purchase plans, leasing and contract hire facilities offer tax efficient, versatile finance alternatives.

## ASSISTANCE

Every new car comes with one year's free RAC cover. You'll enjoy full breakdown and recovery assistance, anywhere in Europe, 24 hours a day. You can even extend cover for up to two more years at preferential rates.

## OWNERS INSURANCE

Statistics show Volvo drivers have fewer accidents. That means Volvo Owners insurance can offer competitive premiums with tailored protection and exclusive benefits. Operated in conjunction with The Royal and SunAlliance, one telephone call even deals with all arrangements for any claim.

## WARRANTY

Every new Volvo comes with comprehensive protection. Our warranty covers the first three years or 60,000 miles, whichever comes first. There's a three year unlimited warranty on the paintwork, and a full 8 years against rust perforation. If a component fails due to a defect or material fault, your dealer will swiftly rectify the problem, free of charge.

All 'On The Road' prices quoted in this price list include Volvo standard national delivery charge, inclusive of number plates, at £480 and the VED (Vehicle Excise Duty) car tax effective from 1st March 2000. The 'On The Road' price also includes a £25 vehicle first registration fee (as set by the government), effective since 1st April 1998 (excludes Channel Islands and Isle of Man). Retail prices quoted do not include these additions.

### Details

The above is just an outline of the facilities available to Volvo Owners. For full details, contact your dealer, or visit [www.volvocars.co.uk](http://www.volvocars.co.uk)

<sup>(i)</sup> Subject to status. Written quotations are available from Volvo Car Finance Limited, Globe Park, Marlow, Buckinghamshire SL7 1YQ.

