

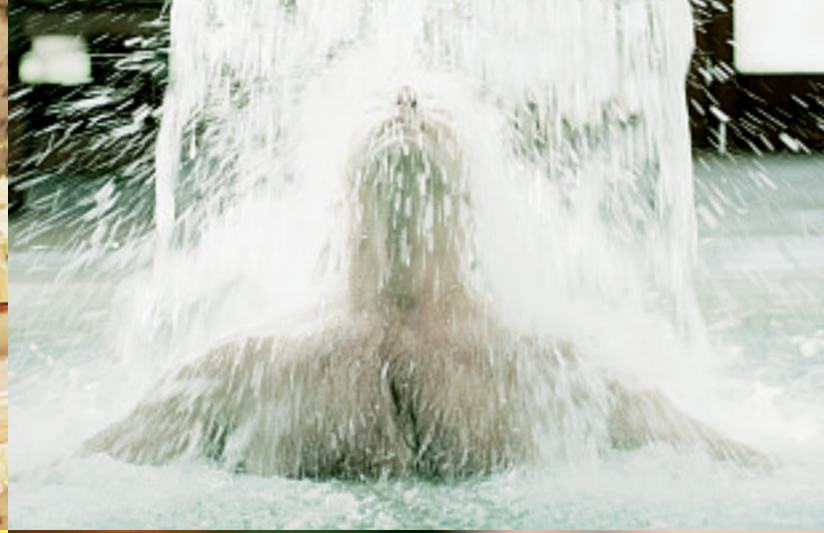
VOLVO  
**C70** 2004



**VOLVO**  
for life







THE VOLVO C70	2
TO LIVE WITH	4
TO DRIVE	10
TO BE SAFE	12
TO CARE	16
STANDARD FEATURES	18
ACCESSORIES	20
INTERIOR SELECTIONS	21
EXTERIOR SELECTIONS	24
TECHNICAL SPECIFICATIONS	25
CARE BY VOLVO	27

[WWW.VOLVOCARS.US](http://WWW.VOLVOCARS.US)





**PACK YOUR BAGS.  
BUST OUT OF TOWN.  
ENJOY THE EMOTION.  
THE VOLVO C70. LIFE HAS ITS REWARDS.**









## **VOLVO C70**

DEFY CONFORMITY AND TRADITIONAL EXPECTATIONS IN A SUN-WORSHIPPING ENERGIZER WITH AN EXQUISITE SCANDINAVIAN FLAIR. IT IS ALSO THE VOLVO YOU CAN COUNT ON, WITH IMPRESSIVE SAFETY FEATURES AS WELL AS SPACIOUS LUXURY. A TRULY GENEROUS VEHICLE DESIGNED FOR INSPIRED DRIVING, THE C70 IS FOR THOSE WHO BELIEVE THAT IF YOU WANT TO LIVE OUTSIDE OF THE BOX, START BY OPENING THE LID.



## TO LIVE WITH

SUDDENLY EVERYTHING FALLS INTO PLACE AND LIFE IS A WINDING ROAD SNAKING ALONG THE COAST. INSTANT FEEDBACK INSPIRES THE DRIVER'S EVERY MOVE. YOU CAN GIVE YOUR SENSES FREE REIN... LET YOURSELF BE CARRIED AWAY BY THE UNDERSTATED LUXURY, AND BY A PREMIUM SOUND SYSTEM DESIGNED FOR THE TRUE AUDIOPHILE. AND AS YOUR DAY PROGRESSES, IT CULMINATES IN A FEELING OF PURE, UNSURPASSED SATISFACTION.



Four adults travel in comfort – even on long trips. Individual sports seating in genuine leather and a number of thoughtful touches make every trip a pleasure. The ambience is further heightened by the perfectly composed interior and the excellent materials. And the sense of freedom is never further away than the touch of a button.





**“GOOD DESIGN** IS NOT ONLY A MATTER OF STYLING THE SURFACE. IT IS JUST AS IMPORTANT TO MAKE THE PRODUCT EASY TO UNDERSTAND AND USE. IF THE PRODUCT IS NOT FUNCTIONAL, IT CAN'T BE BEAUTIFUL.”  
(THE VOLVO DESIGN PHILOSOPHY)



The C70 is among the most accommodating vehicles in its segment. The comfortable rear seats provide each passenger with ample room to relax. When the top is raised, the Dual Zone Electronic Climate Control system (ECC) maintains an ideal cabin temperature. It can be set individually for the driver and passenger sides. At the touch of a button, the top is lowered in less than thirty seconds. There are no catches to release or fasten. When lowered, the top is recessed beneath a hatch in the body. All the side windows can be raised or lowered simultaneously. And to further enhance comfort in the front seats while still enabling you to enjoy the open air, simply add the specially-designed wind deflector.\*

\*Retailer accessory



THE VOLVO C70 IS DESIGNED TO MOVE YOU IN A NUMBER OF WAYS. JUST LOWER THE TOP AND BE CARRIED AWAY BY THE BREEZE PLAYING IN YOUR HAIR, THE SCENTS AND – NOT LEAST – THE SOUND OF AN EXQUISITE PREMIUM SOUND AUDIO SYSTEM. FEEL THE MUSIC THROUGHOUT YOUR BODY, AND ENJOY THE PERFECT SOUND TRACK FOR A PERFECT DAY.



Experience a world-class audio system for the truly discerning music lover. The standard Premium Sound high-end speakers have been specially designed for the C70 in cooperation with Danish speaker specialists Dynaudio – all to give you superb sound, without compromise. The speakers' remarkably clear and authentic sound even at loud volume gives you a musical experience of absolute world class. The ten speakers' relaxed yet dynamic audio reproduction across the entire range in combination with an in-dash 3-CD changer and a

separate 400 W Premium Sound amplifier contribute to an exceptionally convincing audio experience – you can relax and fully enjoy the clean, crystal-clear music. If you add Dolby Surround Pro Logic®, you and your front-seat passenger can enjoy a uniquely three-dimensional sound of immense clarity and a remarkable sense of presence – it's like having the best places at an outdoor concert. And when you raise the top, sound reproduction is automatically adapted to transform your Volvo C70 into a concert hall.

\*Dolby and Pro Logic are trademarks of Dolby Laboratories.





**DASHBOARD**

One 5" coaxial center speaker  
for Dolby Surround Pro Logic®  
(optional)

**DASHBOARD**

Two 1" tweeters

**DOORS**

Two 8" woofers  
Two 4" mid-range

**REAR PASSENGER  
COMPARTMENT**

Two 6.5" woofers  
Two 1" tweeters

**REAR PASSENGER  
COMPARTMENT**

Two 9" sub-woofers (optional,  
retailer installed accessory)





## TO DRIVE

IT'S A VERY SPECIAL KIND OF FUN – HAVING INSTANT RESPONSE AT YOUR COMMAND IN EVERY SITUATION, WHILE STILL MAINTAINING PEACE OF MIND. THE C70 WILL STIR YOUR SOUL – AND THE FIVE-CYLINDER TURBO ENGINE IS MORE THAN WILLING TO SET THE PACE.



Volvo's patented rear suspension system, Delta-link, provides both firm grip on the road and supple ride comfort. The rear axle allows the rear wheels to turn slightly together with the front wheels when entering a curve. The result is quick steering response and better control over the car throughout the curve.



When it's needed, you have access to a powerful anti-lock braking system with EBD (Electronic Brake Distribution). Braking power is automatically distributed between the front and rear brakes for effective, secure braking in all situations.



The smooth, powerful 197-hp or 242-hp five-cylinder turbocharged engine gives you instant access to its full power potential, responding to your commands instantly and providing a smooth wave of power. And at the same time, it ensures that the fuel is utilized efficiently and that exhaust emissions are kept low. The crisp five-speed automatic transmission is part of the spirited driving experience in the Volvo C70.

"CARS ARE DRIVEN BY PEOPLE. THE GUIDING PRINCIPLE  
BEHIND EVERYTHING WE MAKE AT VOLVO, THEREFORE,  
IS – AND MUST REMAIN – SAFETY."

ASSAR GABRIELSSON AND GUSTAF LARSON,  
THE FOUNDERS OF VOLVO.





## TO BE SAFE

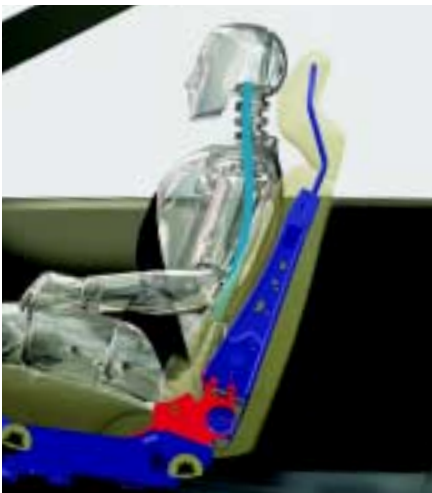
THE VOLVO C70 IS DESIGNED TO PROVIDE COMPLETE DRIVER CONFIDENCE AND OCCUPANT PROTECTION. AN ERGONOMIC DRIVER'S ENVIRONMENT, A WELL-BALANCED CHASSIS AND STC ANTI-SPIN SYSTEM HELP GIVE YOU CONTROL UNDER A WIDE VARIETY OF CONDITIONS. AND SHOULD AN ACCIDENT BE UNAVOIDABLE, YOU AND YOUR PASSENGERS ARE PROVIDED ENHANCED PROTECTION BY VOLVO'S UNIQUE SAFETY SYSTEM THAT INCLUDES ROPS (ROLL-OVER PROTECTION SYSTEM). THE VOLVO C70 IS ONE OF THE WORLD'S MOST SAFETY-MINDED OPEN-TOP CARS – ALLOWING YOU TO ENJOY THE EXPERIENCE TO THE FULL.

STC

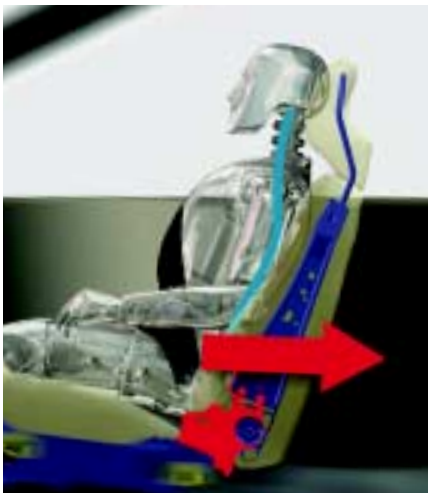
The STC (Stability and Traction Control) anti-spin system automatically ensures that the drive wheels get just the right amount of power to retain a firm grip on the road. STC also adds to the joy of driving by enhancing stability when cornering.

ROPS

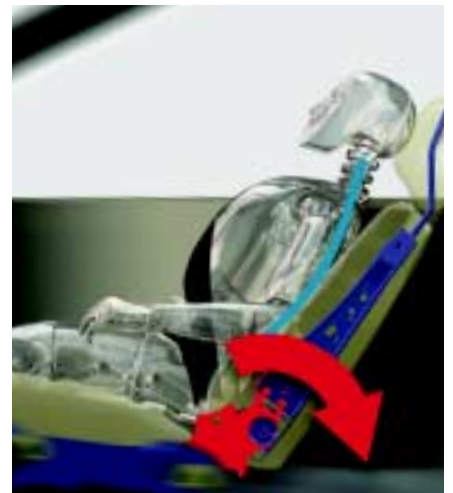
If you should find yourself in a situation in which the car is about to roll over, the safety arches concealed in the bodywork at the rear of the car are activated within a fraction of a second. At the same time, the seat belt pre-tensioners are activated in all four seats, helping to keep you and your passengers restrained in the seats.



WHIPS (Whiplash Protection System) is activated in certain types of rear-end collisions. A framework in the seat supports the back and helps prevent the occupant from being pressed too deeply into the backrest.



The entire backrest moves rearward to help prevent the occupant from being thrown forward by the force of the impact. At the same time, the upper part of the backrest moves up and forward to assist in reducing the strain on the back and neck.



Once the entire back has been securely cradled by the backrest, the backrest tips rearward to help reduce the force that would otherwise throw the head forward.

AT VOLVO, WE BELIEVE THAT IT'S THE WHOLE RATHER THAN THE PARTS THAT DETERMINES HOW SAFE A CAR IS. THE VOLVO C70 IS VERY MUCH THE PRODUCT OF THIS BELIEF – EVERYTHING INTERACTS HARMONIOUSLY TO HELP KEEP YOU OUT OF HARM'S WAY.

**COLLAPSIBLE THREE-STAGE STEERING COLUMN**

In the event of a frontal collision, the steering column is designed to collapse and help prevent injuries to the driver.

**ENERGY-ABSORBING INTERIOR**

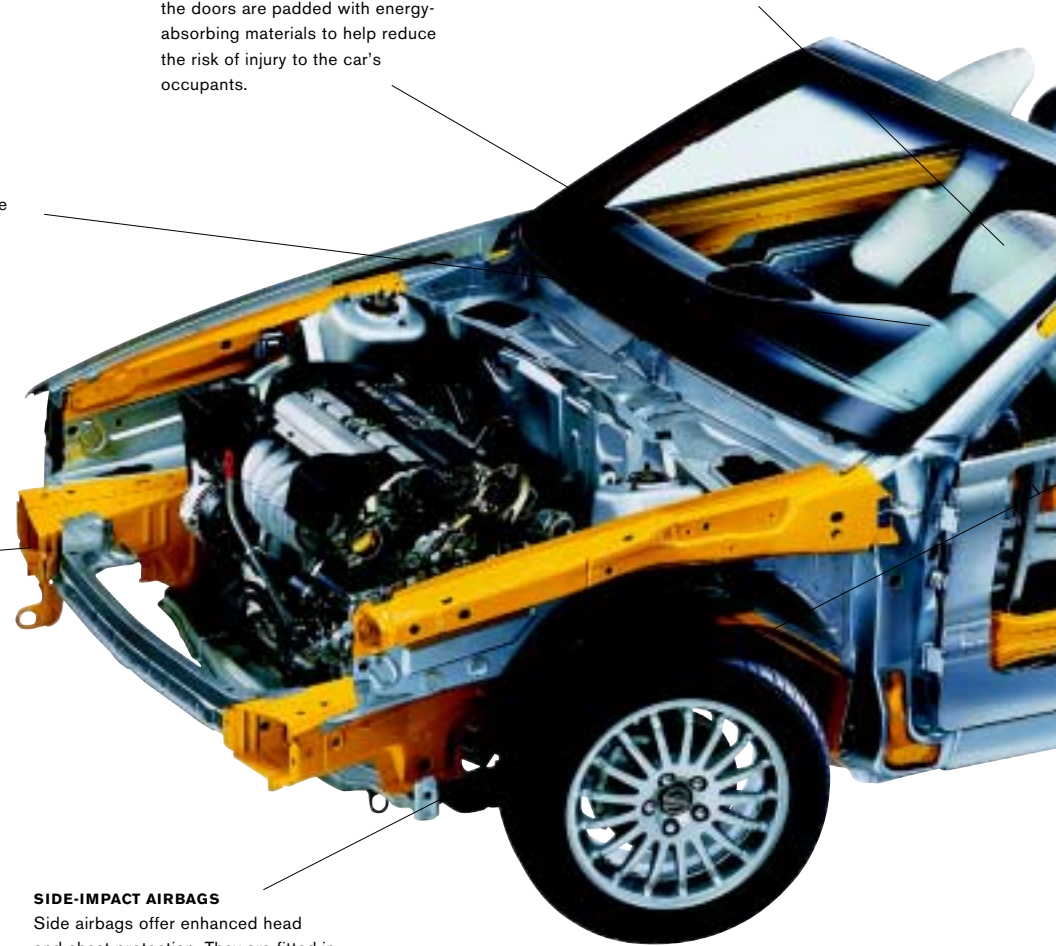
All the panels and the sides of the doors are padded with energy-absorbing materials to help reduce the risk of injury to the car's occupants.

**AIRBAGS**

The driver and passenger airbags interact with the front seat belts, pre-tensioners, and force limiters to help protect the head, face and chest in certain frontal or offset impacts.

**DEFORMATION ZONES**

Front and rear deformation zones help dissipate collision forces before they can reach the passenger compartment.



**SIDE-IMPACT AIRBAGS**

Side airbags offer enhanced head and chest protection. They are fitted in the outer edge of the front seat backrests, not in the doors, so that they are always by your side.



## PERSONAL SECURITY

AT VOLVO, PROVIDING FOR YOUR PERSONAL SAFETY IS A NATURAL EXTENSION OF OUR DEVOTION TO YOUR DRIVING SAFETY. AND SO, A NUMBER OF CRITICAL FEATURES HAVE BEEN ADDED TO THE VOLVO C70 TO HELP YOU AVOID THREATENING SITUATIONS.

**WHIPS (WHIPLASH PROTECTION SYSTEM)**

WHIPS helps reduce the risk of whiplash injury by cradling the spine and neck in a controlled way if the vehicle is hit from behind at low speeds. It is built into the front seats and activated by a sufficient impact.

**ROPS ROLL-OVER PROTECTION SYSTEM**

If the car rolls over, an electronic sensor triggers the arches concealed behind the rear seat head restraints, along with the seat belt pre-tensioners for all four seats. The rear arches act together with the strongly reinforced windshield frame to provide enhanced protection.

**SEAT BELTS WITH PRE-TENSIONERS**

All four seats have head restraints and three-point seat belts with pre-tensioners. In a collision, the seat belts are pulled taut to help keep passengers properly positioned. The front seat belts then slacken slightly so that the occupant is cushioned by the airbag in a controlled way.

**ISOFIX COMPLIANT**

This attachment system ensures quick and correct installation and removal of safety seats for children in the rear seat's outboard positions.

**PROTECTED FUEL TANK**

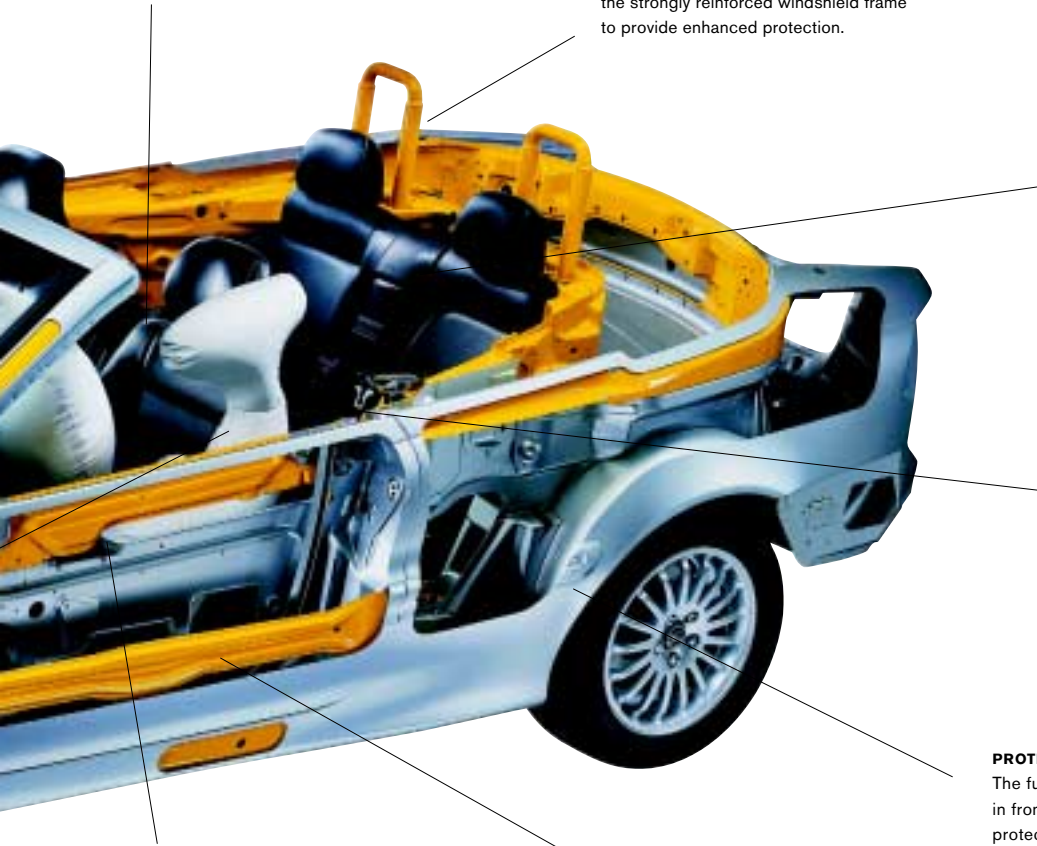
The fuel tank is strategically placed in front of the rear axle, which helps protect it in the event of a rear-end collision.

**ANTI-SUBMARINING SEATS**

Front and rear seats are shaped to help keep occupants from sliding under and out of their seat belts during a collision.

**SIDE-IMPACT PROTECTION SYSTEM (SIPS)**

Volvo's unique side-impact protection system uses a large part of the car's body to absorb the force of an impact. The system is reinforced by extremely strong doors and a robust horseshoe-like structure in the rear. The front seat side airbags offer maximum head and chest protection.



The C70 experience also comprises personal protection. Home Safe lighting allows greater personal safety when departing the vehicle. A touch of the headlight lever – and the headlights illuminate your way for thirty seconds. An electronic immobilizer and door locks that withstand most break-in attempts help protect against theft. A security

system with sensors in the doors, hood and trunk activate an alarm if someone should ever try to break into the vehicle. And in the event of trouble – press the panic button in the remote control and the alarm will sound.









## TO CARE

YOU CAN ENJOY THE SENSE OF FREEDOM AND FRESH AIR WITH A CLEAN CONSCIENCE. THE VOLVO C70 UTILIZES ITS FUEL EFFICIENTLY AND KEEPS HARMFUL EMISSIONS AT A MINIMUM. BECAUSE IT IS QUITE SIMPLY MORE ENJOYABLE TO DRIVE A CAR THAT TAKES THE ENVIRONMENT INTO CONSIDERATION.

### **FUEL ECONOMY AND EMISSIONS**

High-efficiency turbo engines with sophisticated electronic engine management reduce fuel consumption and thus also emissions of carbon dioxide, a greenhouse gas. Advanced engine emission control technology eliminates 95-98 percent of carbon monoxide, hydrocarbons and nitrogen oxides from the exhaust gases.

### **CLEAN ALL ITS LIFE**

In the Volvo C70, environmental care is built in from the initial design and engineering stages. All plastic components that weigh more than 1.8 oz. (50 g) are marked to facilitate sorting and recycling. In total, approximately 85 percent of each car can be recycled. Volvo Cars' also provides an environmental product declaration (EPD) – a tool that helps you choose a Volvo model on the basis of its overall environmental impact throughout its lifetime. The environmental product declaration can be viewed on [epd.volvocars.se](http://epd.volvocars.se)

### **CLEAN BROCHURE**

At Volvo, concern for the environment is important in every aspect of what we do. This brochure is 100 percent recyclable. The paper is manufactured in North America utilizing the Sustainable Forestry Initiative. No paper pulp material is harvested from old-growth forests or rain forests, and it is chlorine-free. The inks and coatings utilized for print are vegetable and water-based. Even the shipping cartons contain 50 percent post-consumer waste and are also 100 percent recyclable.

### **CONTRIBUTING TO SUSTAINABLE DEVELOPMENT**

Volvo Cars aims to be a leader in corporate citizenship – ensuring a balance between the needs of the company, its customers, society, and future generations. Environmental responsibility is an important part of this effort, and so too is a far-reaching undertaking to safeguard society's interests, in Volvo's role as an employer and as a builder of that society; both independently and together with other companies, authorities and organizations. Our annual "Corporate Citizenship" report is available on [www.volvocars.com/citizenship](http://www.volvocars.com/citizenship). And to recognize and reward ordinary Americans who go above and beyond the call of duty, we created the Volvo for Life Awards program, see [www.volvoforlifeawards.com](http://www.volvoforlifeawards.com)

# STANDARD FEATURES

SAFETY	C70 LPT	C70 HPT
Anti-submarine seats	●	●
Daytime running lights (halogen semi-sealed with replaceable bulb)	●	●
Driver and front passenger supplemental restraint system – dual-threshold air bags	●	●
Emergency trunk release	●	●
Illuminated side marker lights/turn signal indicators	●	●
Immobilizer, encrypted ignition key	●	●
ISOFIX baby/child seat attachment system	●	●
Overhead-mounted seat belt reminder lights	●	●
Rear fog light with auto-off	●	●
Rollover protection system (ROPS)	●	●
Seat belts: four, 3-point inertia-reel belts; front belts have automatic pretensioners and height adjustment	●	●
Security system	●	●
Side impact air bags for driver and front passenger (SIPS bags II™)	●	●
Side impact protection system (SIPS)	●	●
Stability and traction control (STC)	●	●
Whiplash protection seating system (WHIPS)	●	●
<b>INTERIOR:</b>		
Auto-dim rearview mirror (included in Touring Package for LPT)	P	●
Cruise control	●	●
Cup holders	●	●
Dual-zone electronic climate control (ECC)	●	●
Four padded head restraints	●	●
Four reading lamps	●	●
Front center armrest	●	●
Front door-panel storage pockets	●	●
Front seat-back storage pockets	●	●
Gearshift knob upgrade (included in Touring Package for LPT)	P	●
Heated front seats	●	●
Illuminated vanity mirrors in driver/front passenger sun visors	●	●
Illuminated lockable glove box	●	●
Interior cabin light delay	●	●
Interior trim inlays (included in Touring Package for LPT)	P	●
Leather-trimmed steering wheel	●	●
Luggage/cargo area lights	●	●
Plush front and rear floor mats	●	●
Power-adjustable driver seat, 8-way with 3-position memory and lumbar support	●	●
Power-adjustable passenger seat, 8-way with lumbar support	●	●
Power trunk lock/unlock	●	●
Power windows with driver and passenger auto up/down with anti-trap feature	●	●
Prewiring for multi-CD changer	●	●
Rear window defroster with automatic timer	●	●
SC-901 Premium audio system with cassette, in-dash 3-CD, 400-watt amplifier, 10 speakers, diversity antenna	●	●
Tilt/telescopic steering wheel	●	●
Trip computer (included in Touring Package for LPT)	P	●
Two entry lights (in front door foot wells)	●	●
<b>EXTERIOR:</b>		
Central power door locks with remote keyless entry, trunk and fuel filler locks	●	●
Front fog lights	●	●
Headlamp washers	●	●
Outside temperature gauge	●	●
Pollen filter for passenger compartment	●	●
Power-adjustable heated exterior rearview mirrors	●	●
Stainless steel door sills	●	●
Tinted windows	●	●
2-speed windshield wipers with intermittent cycle	●	●

● = Standard P = Package





## TOURING PACKAGE\*

The wide range of considerate and practical features makes life with your Volvo a truly enjoyable experience. And by adding the Touring Package, you expand your freedom even more.

- Auto dimming mirror
- Gearshift knob upgrade
- Interior trim inlays (instrument panel, tunnel console, glove compartment)
- Trip computer

\*Standard in HPT.

#### **SUB-WOOFERS**

If you want bass frequencies that you can feel throughout your body, you can add two 9-inch sub-woofers behind the rear seat. If necessary, they can be switched off by the rear-seat passengers.



#### **WIND DEFLECTOR**

Further heightens the long-distance comfort in your Volvo C70 by reducing draughts for the front-seat occupants when the top is down. It covers the entire rear passenger seat and is easy to install and remove.



## **ACCESSORIES**

VOLVO'S ACCESSORIES HELP YOU MAKE YOUR C70 EVEN MORE SUITED TO YOUR PERSONAL NEEDS. THEY ARE THE ONLY ONES THAT HAVE BEEN TESTED TO MEET VOLVO'S EXACTING SAFETY, QUALITY AND ENVIRONMENTAL REQUIREMENTS. YOU CAN ALSO REST ASSURED THEY'RE A PERFECT MATCH TO THE TECHNOLOGY AND DESIGN OF YOUR VOLVO.

#### **FOR DRIVING FREEDOM**

- Note pad integrated in armrest
- Park assist, rear
- PC table
- Reading lamp
- Subwoofer kit
- Sunglass holder
- Wind deflector
- 6 Disc CD changer

#### **FOR PRECIOUS CARGO**

- Booster cushion and adjustable backrest
- Child activity bag
- First aid kit
- Padded neck cushion
- Snow chains

#### **FOR YOUR LEISURE**

- Aluminum wheels
- Convertible load rail
- Electric engine heater
- Load lashing straps
- Ski/Snowboard carrier

#### **FOR YOUR INTERIOR COMFORT**

- Bagholder – luggage compartment
- Car cover
- Floor mats, rubber
- Jumper cables
- Leather care kit
- Load securing net, trunk floor
- Luggage compartment mats
- Nose mask
- Warning triangle

See the 2005 Volvo Accessories brochure for a complete list of Genuine Volvo Accessories.



## INTERIOR SELECTIONS

CHOOSE FROM A NUMBER OF SPECIALLY DESIGNED OPTIONS TO CREATE THE INTERIOR THAT BEST SUITS YOU. THEN ENJOY YOUR CREATION EVERY TIME YOU ENTER YOUR C70.



Leather-clad  
Sports steering wheel, Graphite



Leather-clad steering wheel,  
Graphite with Red walnut wood trim



Leather-clad  
gear-lever knob, Graphite  
(manual and automatic)



Gear-lever knob with  
Red walnut wood trim  
(automatic)



Red walnut wood trim  
(instrument panel, tunnel console  
and glove compartment)



**BEIGE INTERIOR**

Leather Light Beige upholstery (1966), leather-clad steering wheel with Red walnut wood trim, Red walnut wood trim in panels and gear-lever knob.



**INTERIOR SELECTIONS**



Soft leather Linen White (17B6)  
Available in Beige interior

**GRANITE INTERIOR**

Leather Silver upholstery (1944), leather-clad steering wheel, Red walnut wood trim in panels and gear-lever knob.



**GRAPHITE INTERIOR**

Leather Graphite upholstery (1970), leather-clad steering wheel, Red walnut wood trim in panels and gear-lever knob.



## EXTERIOR SELECTIONS

YOU CAN CUSTOMIZE THE LOOK TO SUIT YOUR TASTE AND TEMPERAMENT. CHOOSE FROM A VARIETY OF COLORS. SELECT FROM DIFFERENT WHEEL DESIGNS. DIAL UP THE ELEGANCE OR THE SPORTINESS UNTIL YOU HAVE JUST THE C70 THAT SUITS YOU.



7.5x17" COMET 5-spoke alloy wheels  
w/225/45/zr17 tires



7.5x17" OTRERA multi-spoke alloy wheels  
w/225/45/zr17 tires



7x16" ZEUS 17-spoke alloy wheels  
w/225/50/zr16 tires

Color choices for the outside of the Volvo C70 soft-top (the inside of the top is always grey)



Black (standard)



Blue



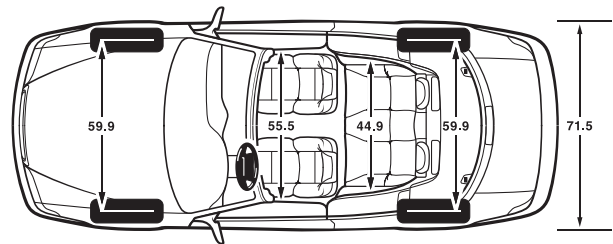
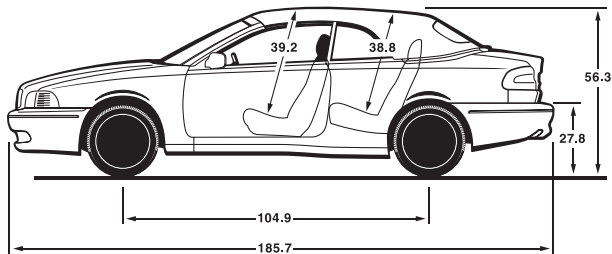
Beige



# TECHNICAL SPECIFICATIONS

	C70 LPT	C70 HPT
<b>ENGINE:</b>		
Horsepower (SAE net)	197 @ 5,700 rpm	242 @ 5,400 rpm
Torque (ft./lbs. SAE net)	210 @ 1,800 rpm	243 @ 2,400 rpm
<b>TRANSMISSION:</b>		
5-speed microprocessor-controlled automatic	●	○
5-speed manual	N/A	●
<b>BRAKES:</b>		
Anti-lock braking system (ABS) with electronic brake distribution (EBD)	●	●
<b>SUSPENSION:</b>		
Front suspension: MacPherson strut with asymmetrically mounted coil springs, hydraulic shocks, 20 mm stabilizer bar	●	●
Rear suspension: Delta-link semi-independent rear suspension with coil springs, gas shocks, 20 mm stabilizer bar	●	●
<b>STEERING:</b>		
Power-assisted rack-and-pinion steering	●	●
<b>EXTERIOR DIMENSIONS &amp; WEIGHTS:</b>		
Curb weight	3,450 lbs.	3,450 lbs.
Fuel tank capacity	18 U.S. Gallons	18 U.S. Gallons
Height	56.3 in.	56.3 in.
Length	185.7 in.	185.7 in.
Top speed	137 mph	149 mph
Towing capacity	3,300 lbs.	3,300 lbs.
Track, front/rear	59.9/59.8 in.	59.9/59.8 in.
Turning circle, curb to curb	38.4 ft.	38.4 ft.
Wheelbase	104.9 in.	104.9 in.
Width	71.5 in.	71.5 in.
<b>INTERIOR DIMENSIONS:</b>		
Headroom in convertible with top up	39.2 in.	39.2 in.
Hiproom, front	51.7 in.	51.7 in.
Legroom, front/rear	41.4/34.6 in.	41.4/34.6 in.
Shoulder room, front/rear	55.5/44.9 in.	55.5/44.9 in.
Trunk capacity	8.1 cu. ft.	8.1 cu. ft.
<b>FUEL ECONOMY (MPG):</b>		
Manual trans highway/city	N/A	28/21
Automatic trans highway/city	26/20	26/20

● = Standard ○ = Option





612 Passion Red



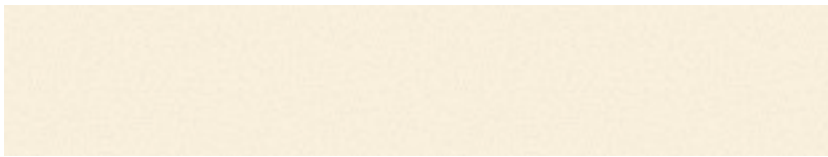
417 Nautic Blue metallic



426 Silver metallic



452 Black Sapphire metallic



453 Pearl White metallic



455 Titanium Grey metallic

**PLEASE NOTE:** It is not possible to reproduce exact original shades in this brochure. Ask your Volvo retailer to show you samples. As part of our commitment to the environment, the paper used in this brochure is recycled, and color choices were printed directly on the page. This eliminates the need for chemically treated color chips. A small thing perhaps, but then, every little bit helps.

# WELCOME TO OUR FAMILY

BEING A VOLVO OWNER IS ABOUT MORE THAN JUST OWNING AN AUTOMOBILE. IT'S ABOUT BEING TREATED IN A CARING, RESPONSIVE AND RESPECTFUL MANNER EVERY TIME YOU INTERACT WITH OUR COMPANY. ALL OF US ARE COMMITTED TO MAKING EVERY ASPECT OF YOUR VOLVO EXPERIENCE A REWARDING ONE. SO AFTER THE NEW CAR SMELL BEGINS TO FADE, YOU'LL STILL BE EXCITED ABOUT OWNING A VOLVO.

**CARE  
BY VOLVO**

## VOLVO CAR FINANCE NORTH AMERICA

If you purchase or lease your Volvo through Volvo Car Finance North America, you can take advantage of services designed to make financing simple and convenient. Quick Debit, for instance, enables you to have your monthly payment automatically debited from a designated bank account. For more information, call 1-800-770-8234 or visit [www.volvofinance.com](http://www.volvofinance.com)

## CARE BY VOLVO® ON CALL ROADSIDE ASSISTANCE

Whenever you need us, we're just a phone call away. Our nationwide network of retailers and authorized service providers are ready to assist. Whether you require roadside assistance or maps and routing information for your next trip, refer to your Care By Volvo® On Call Card and dial 1-800-63-VOLVO – anytime, day or night. Your complimentary four-year membership activates the moment you become a Volvo owner.

## THE VOLVO OWNERS' CIRCLE

Driving is not the only rewarding part of owning a Volvo. As a member of the Volvo Owners' Circle, you'll have access to information designed exclusively for Volvo owners. This unique online resource includes frequently asked questions, special offers, a resale value wizard, and your own Virtual Glove Box – complete with an owner's manual and more.

## VOLVO NEW CAR WARRANTY

Your new car warranty provides comprehensive coverage for four years or 50,000 miles, whichever occurs first. Additional warranties cover corrosion, seat belts, the supplemental restraint system, emission systems, genuine Volvo replacement parts and genuine Volvo accessories. Should you encounter any problem with your Volvo, simply contact the nearest retailer for assistance. Where your warranty ends, Volvo Increased Protection (VIP) plans begin. To purchase the additional protection of a VIP plan, contact your local retailer.

# VOLVO OVERSEAS DELIVERY

VOLVO OVERSEAS DELIVERY OFFERS A UNIQUE WAY TO BUY YOUR NEW CUSTOM-BUILT CAR AS WELL AS A UNIQUE WAY TO SEE MORE OF EUROPE. AND WHEN YOU'RE DONE TRAVELING, BRING THE PLEASURE OF DRIVING A VOLVO BACK HOME. PURCHASE ANY NEW VOLVO AS PART OF THE VOLVO OVERSEAS DELIVERY PROGRAM AND ENJOY ALL THIS – AND MORE:

- Attractive pricing on US models
- Two complimentary round-trip tickets with Scandinavian Airlines.
- One free hotel night in Gothenburg, Sweden, the home of Volvo.
- An exciting Volvo Factory Tour or a visit to the new Volvo Cars Safety Center.
- An exclusive VIP delivery experience at the Volvo Factory Delivery Center.
- The opportunity to explore Europe in the comfort and safety of your own Volvo, either with one of our spectacular tours or on your own.
- Extensive complimentary home shipment services. Just leave your car with us. We'll ship it to you the convenient way while you relax and enjoy your complimentary flight back home.

## VOLVO MOBILITY PROGRAM

The goal of the Volvo Mobility Program is to assist persons with physical disabilities or hearing impairment achieve independence. For those with exceptional transportation needs, freedom can be facilitated within the extraordinary comfort and safety of a specially adapted Volvo. For additional information on this program, please contact the Volvo Mobility Program Headquarters at (800) 803-5222 or visit [www.volvocars.us/mobility](http://www.volvocars.us/mobility). TTY users are invited to call 1-800-833-0312.

## PERSONAL SHOPPER

The Volvo Personal Shopper is dedicated to providing you with a whole new level of shopping convenience. Whether you'd like help identifying the Volvo model that best fits your lifestyle, detailed information on any Volvo model, or a comparison against the competition, Volvo is there to help. We can arrange a Guest Drive for you at your nearest Volvo Retailer. So make the most of your shopping time and call the Volvo Personal Shopper at 1-800-550-5658. (U.S. only)

\* Volvo Cars of North America, LLC is not an insurance company or agent. Its affiliate, American Road Services Company ("AMRO") and InsLogic Corporation ("InsLogic"), licensed insurance agencies provide all information regarding available insurance products. Insurance products are provided by non-affiliated participating insurance companies. Not all customers may qualify. In California, AMRO does business as American Road Insurance Agency and InsLogic does business as InsLogic Marketing Services Company.

Can you think of a better way of traveling overseas and making your souvenir part of an unforgettable experience?

If you would like to know more, contact your local Volvo retailer, our Customer Care Center (800) 631-1667, or visit [www.volvocars.us/mybagsarepacked](http://www.volvocars.us/mybagsarepacked)



**WWW.VOLVOCARS.US**

Specifications, features, and equipment shown in this catalog are based upon the latest information available at the time of publication. Volvo Cars of North America, LLC reserves the right to make changes at any time, without notice, to colors, specifications, accessories, materials, and models. For additional information, please contact your authorized Volvo retailer.

© 2004 Volvo Cars of North America, LLC. Printed in USA on recycled paper.

**MY051**

**VOLVO**  
Volvo Car Corporation